

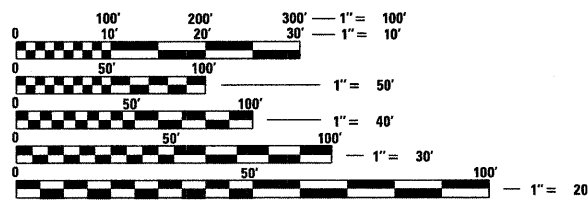
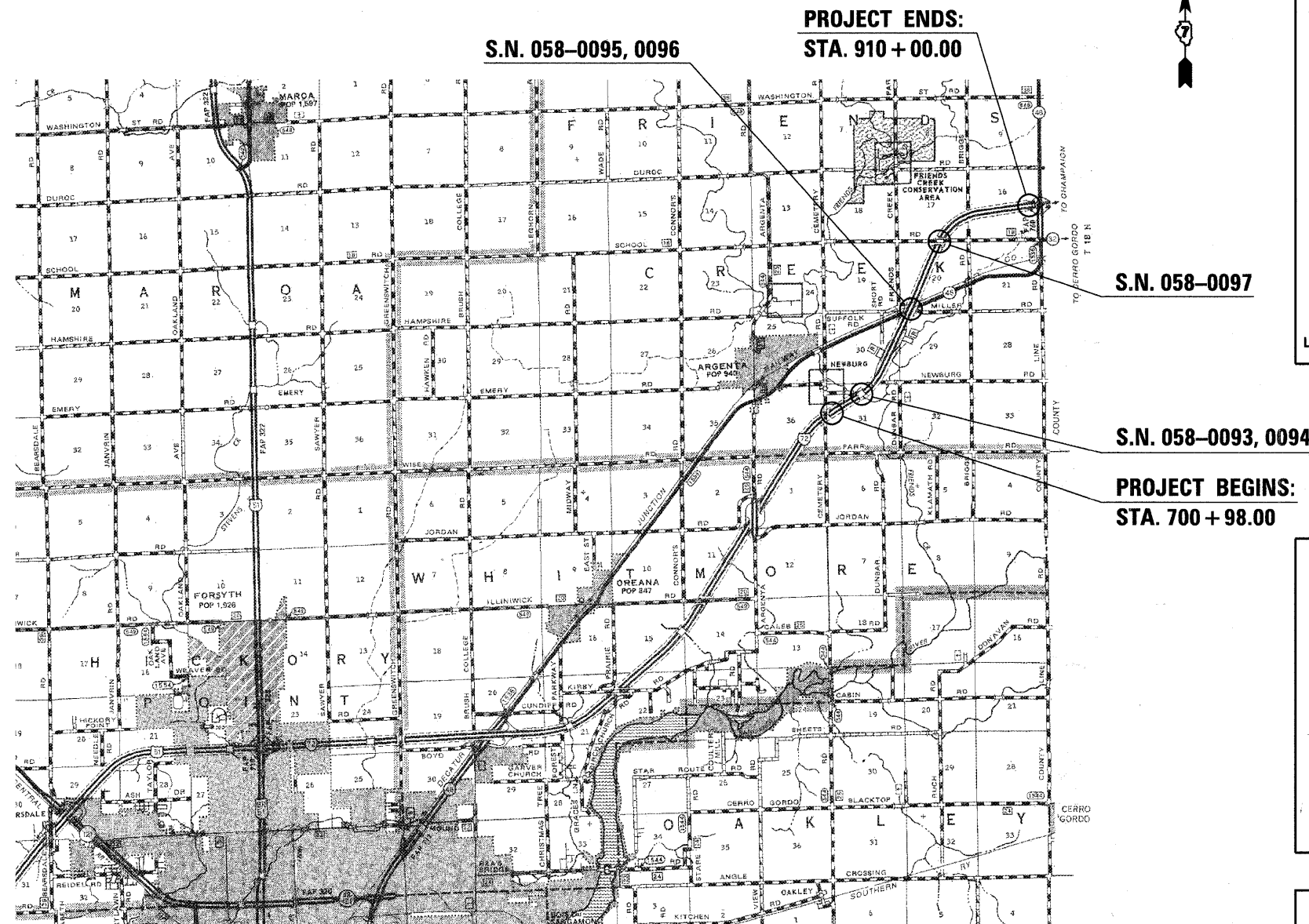
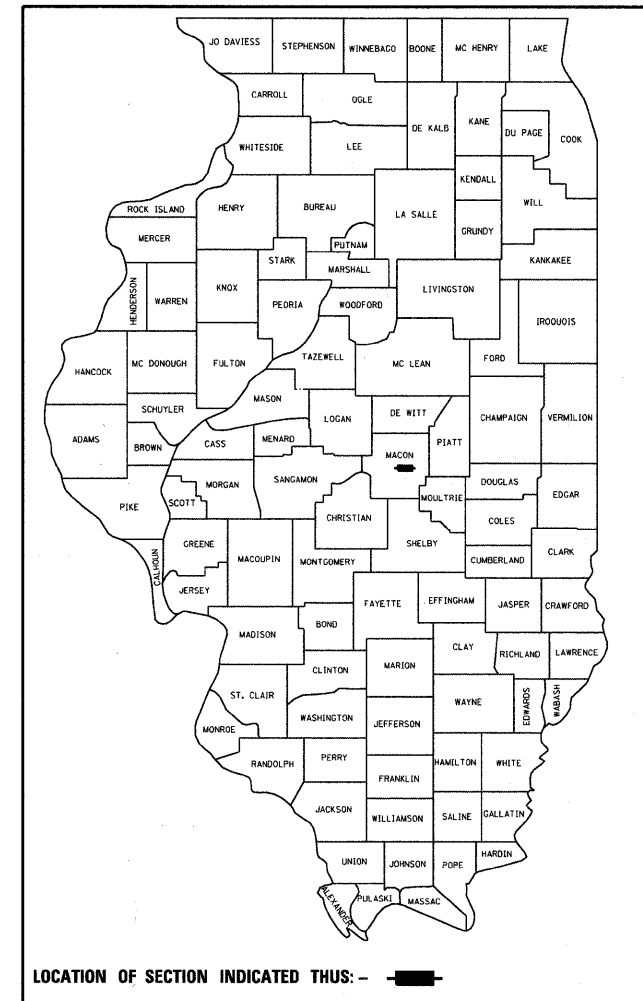
F.A.I. RTE.	SECTION	COUNTY	TOTAL SHEETS	SHEET NO.
72	66(B,HVB,HB-1)BR	MACON	83	1
FED. ROAD DIST. NO.	ILLINOIS	CONTRACT NO. 74343		

STATE OF ILLINOIS
DEPARTMENT OF TRANSPORTATION
DIVISION OF HIGHWAYS
**PROPOSED
HIGHWAY PLANS**

FOR INDEX OF SHEETS, SEE SHEET NO. 2

F.A.I. ROUTE 72
SECTION 66(B,HVB,HB-1)BR
PROJECT: *IM-072-1(080)150*
MACON COUNTY
C-97-112-08

D-97-059-08



FULL SIZE PLANS HAVE BEEN PREPARED USING STANDARD ENGINEERING SCALES. REDUCED SIZED PLANS WILL NOT CONFORM TO STANDARD SCALES. IN MAKING MEASUREMENTS ON REDUCED PLANS, THE ABOVE SCALES MAY BE USED.

J.U.L.I.E.
JOINT UTILITY LOCATION INFORMATION FOR EXCAVATION
1-800-892-0123
OR 811

TOWNSHIP: FRIENDS CREEK
PROJECT ENGINEER - TOM RONAN
PROJECT MANAGER - JEFF DAVISON
ADT = 10,533
CONTRACT NO. 74343

GROSS LENGTH = 20,902 FT. = 3.96 MI.
NET LENGTH = 20,902 FT. = 3.96 MI.

STATE OF ILLINOIS
DEPARTMENT OF TRANSPORTATION
DIVISION OF HIGHWAYS

SUBMITTED *October 1, 20 09*

Roger E. Shickell
DEPUTY DIRECTOR OF HIGHWAYS, REGION ENGINEER

December 4, 20 09
Charles G. Ingersoll
ENGINEER OF DESIGN AND ENVIRONMENT

December 4, 20 09
Christine M. Reed
DIRECTOR OF HIGHWAYS, CHIEF ENGINEER

**PRINTED BY THE AUTHORITY
OF THE STATE OF ILLINOIS**