

**STRUCTURAL REPAIR**

Cost included in Structural Repair of Concrete (Depth <5")

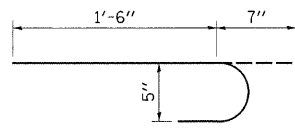
PATCH NUMBER	STATION	AREA SQ. FT.
1	720+75	3.0
2	720+92	8.0
3	721+76	3.0
4	722+03	7.0
5	723+10	2.0
6	723+28	11.0
	Total	31.0

**NORTH PARAPET**

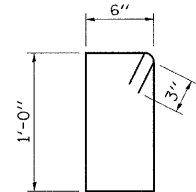
Looking North

**BILL OF MATERIAL**

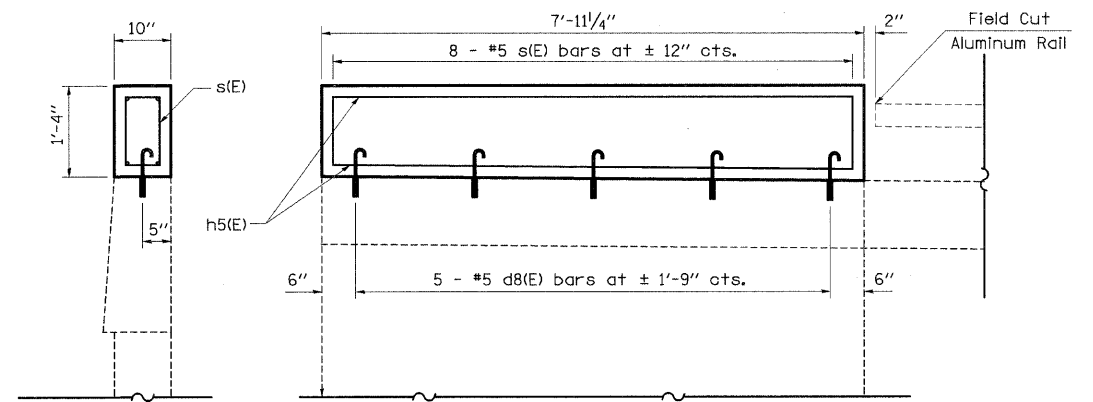
BAR	NUMBER OF BARS	SIZE	LENGTH	SHAPE
d8(E)	5	#5	2' - 1"	U
s(E)	9	#5	3' - 6"	□
h5(E)	4	#5	7' - 7"	□
REINFORCEMENT BARS (EPOXY COATED)			POUND	80
CONCRETE SUPERSTRUCTURE			CU YD	0.3



BAR d8(E)



BAR s(E)



\* Epoxy Grouted Bars in accordance with Art. 584 of the Standard Specs.

**BRIDGE APPROACH WINGWALL IMPROVEMENT DETAIL**

Northwest Wingwall Only