

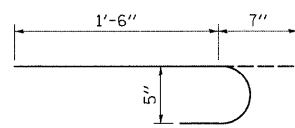
**STRUCTURAL REPAIR**

Cost included in Structural Repair of Concrete (Depth <5")

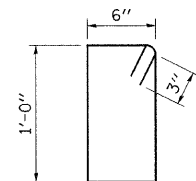
PATCH NUMBER	STATION	AREA SQ. FT.
1	718+55	1.0
2	721+07	4.0
3	721+26	2.0
4	721+72	2.0
Total		9.0

**SOUTH PARAPET**  
Looking South  
**BILL OF MATERIAL**

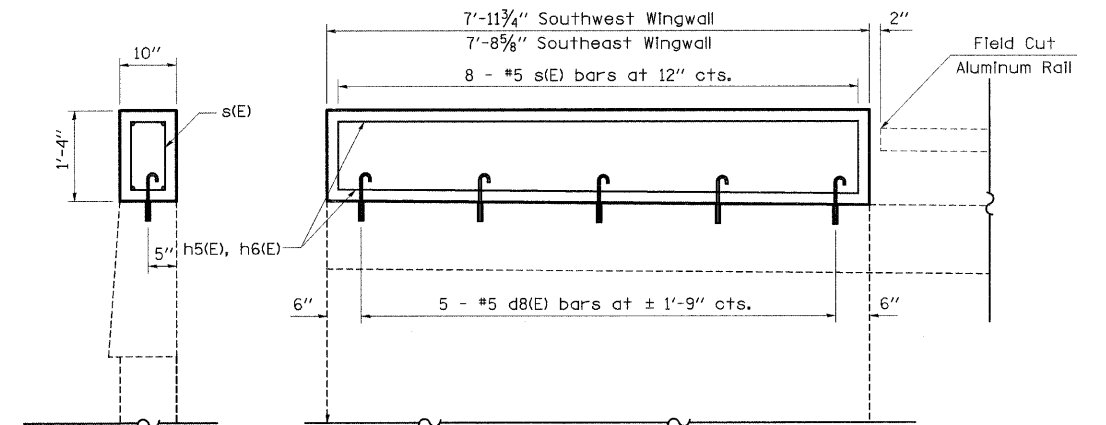
BAR	NUMBER OF BARS	SIZE	LENGTH	SHAPE
d8(E)	10	#5	2' - 1"	U
s(E)	18	#5	3' - 6"	□
h5(E)	4	#5	7' - 7"	—
h6(E)	4	#5	7' - 4"	—
REINFORCEMENT BARS (EPOXY COATED)			POUND	120
CONCRETE SUPERSTRUCTURE			CU YD	0.7



BAR d8(E)



BAR s(E)



\* Epoxy Grouted Bars in accordance with Art. 584 of the Standard Specs.

**BRIDGE APPROACH WINGWALL IMPROVEMENT DETAIL**  
Southeast & Southwest Wingwalls