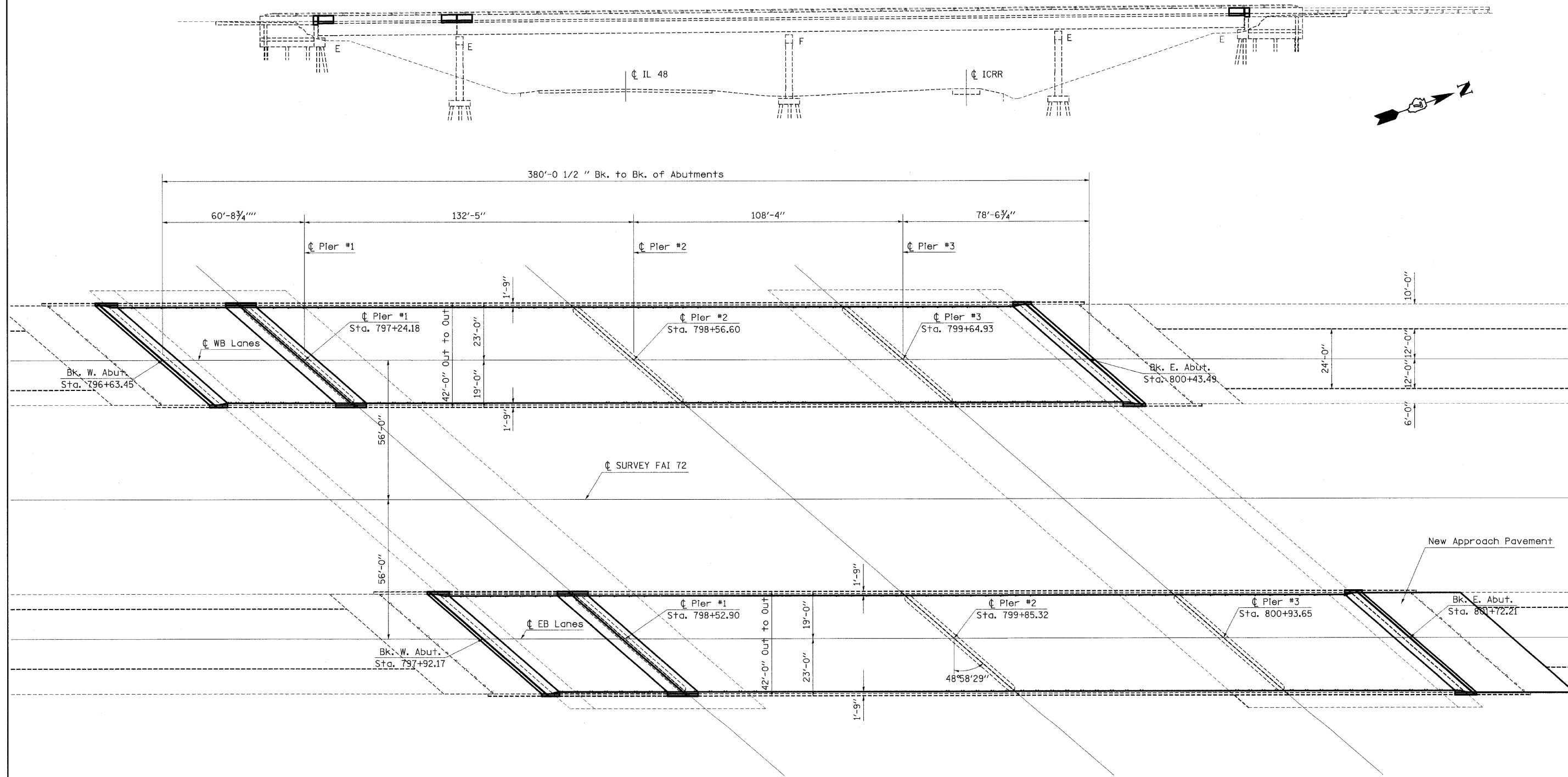


The existing 3 span steel multi-beam structures were constructed in 1975 as section 58-66HVB. SN 058-0095 carries FAI-72 eastbound and SN 085-0096 carries FAI-72 westbound. The proposed project consists of new expansion joints, partial and full depth deck patching, remove and replace bearings at abutments, new microsilica wearing surface, new deck drains and structural repair of concrete. A new approach pavement will be constructed on the east end of SN 058-0095 (EB).



FILE NAME = c:\pwwork\pwwid\SWARTZRW\dms37779\koenbridge.dgn	USER NAME = swartzrw	DESIGNED - DRAWN -	REVISED - REVISED -	STATE OF ILLINOIS DEPARTMENT OF TRANSPORTATION	GENERAL PLAN & ELEVATION SN 058-0095 (EB) & SN 058-0096 (WB)			F.A.I. RTE. 72	SECTION 66(B,HVB,HB-1)BR	COUNTY MACON	TOTAL SHEETS 83	SHEET NO. 46
PLOT SCALE = 20,0000' / IN.					CHECKED -	SCALE: N/A	SHEET NO. 2 OF 21 SHEETS	STA.	TO STA.	FED. ROAD DIST. NO. ILLINOIS FED. AID PROJECT		
PLOT DATE = 9/28/2009					DATE -				CONTRACT NO. 74343			
					REVISED -							