

**NORTH PARAPET**

Looking North

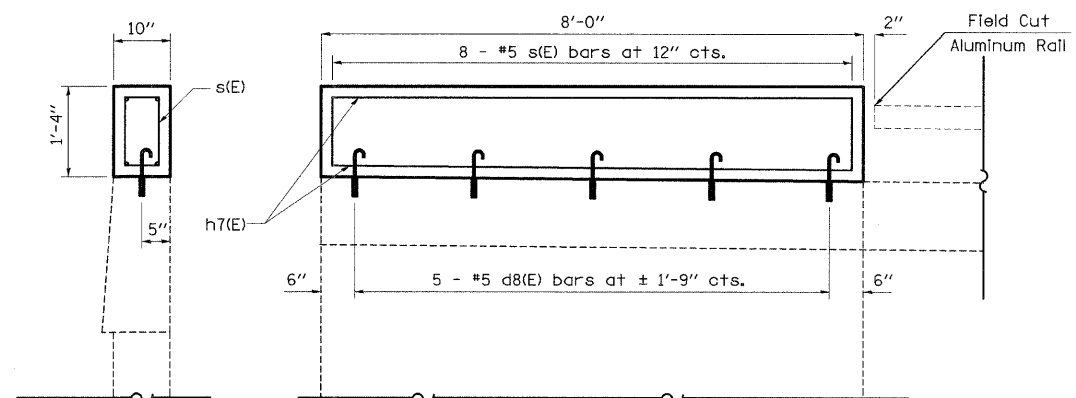
**BILL OF MATERIAL**

| BAR                               | NUMBER OF BARS | SIZE | LENGTH  | SHAPE | REINFORCEMENT BARS (EPOXY COATED) | CONCRETE SUPERSTRUCTURE |     |
|-----------------------------------|----------------|------|---------|-------|-----------------------------------|-------------------------|-----|
| d8(E)                             | 5              | #5   | 2' - 1" | U     | 120                               | 0.3                     |     |
| s(E)                              | 9              | #5   | 3' - 6" | □     |                                   |                         |     |
| h7(E)                             | 4              | #5   | 7' - 8" | U     |                                   |                         |     |
| REINFORCEMENT BARS (EPOXY COATED) |                |      |         |       |                                   | POUND                   | 120 |
| CONCRETE SUPERSTRUCTURE           |                |      |         |       |                                   | CU YD                   | 0.3 |

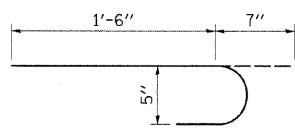
**STRUCTURAL REPAIR**

Cost Included In Structural Repair of Concrete (Depth <5")

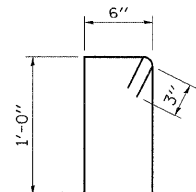
| PATCH NUMBER | STATION | AREA SQ FT |
|--------------|---------|------------|
| 1            | 798+17  | 21.0       |
| 2            | 798+84  | 15.0       |
| 3            | 799+11  | 32.0       |
| 4            | 799+35  | 3.3        |
| 5            | 799+81  | 45.0       |
| 6            | 800+19  | 16.0       |
| 7            | 800+32  | 7.0        |
| 8            | 800+47  | 11.7       |
| 9            | 801+23  | 30.0       |
| Total        |         | 181.0      |



\* Epoxy Grouted Bars In accordance with Art. 584 of the Standard Specs.



**BAR d8(E)**



**BAR s(E)**

**BRIDGE APPROACH WINGWALL IMPROVEMENT DETAIL**

Northwest Wingwall Only