

SOUTH PARAPET
Looking South

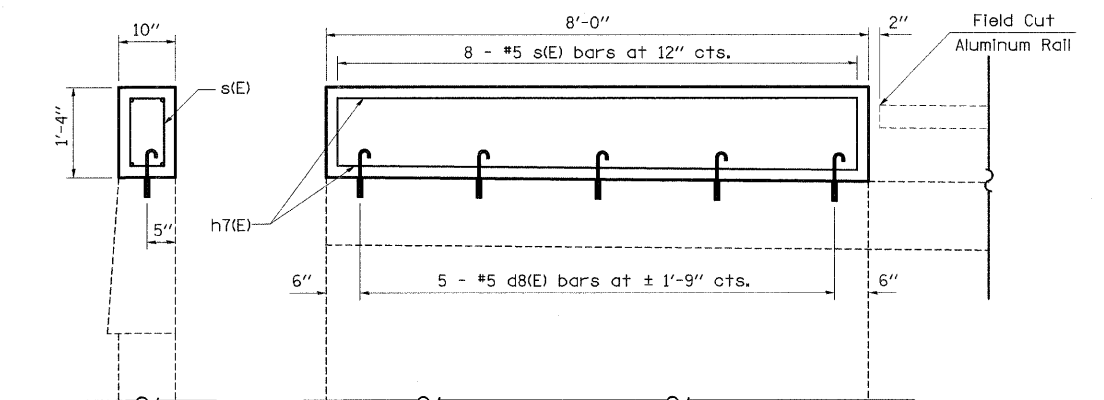
BILL OF MATERIAL

BAR	NUMBER OF BARS	SIZE	LENGTH	SHAPE	
d8(E)	5	#5	2' - 1"		
s(E)	9	#5	3' - 6"		
h7(E)	4	#5	7' - 8"		
REINFORCEMENT BARS (EPOXY COATED)				POUND	120
CONCRETE SUPERSTRUCTURE				CU YD	0.3

STRUCTURAL REPAIR

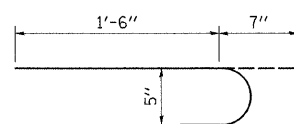
Cost Included in Structural Repair of Concrete (Depth <5")

PATCH NUMBER	STATION	AREA SQ. FT.
1	797+11	66.0
Total		66.0

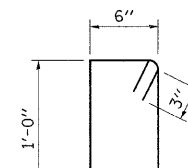


* Epoxy Grouted Bars in accordance with Art. 584 of the Standard Specs.

BRIDGE APPROACH WINGWALL IMPROVEMENT DETAIL
Southeast Wingwall Only



BAR d8(E)



BAR s(E)

FILE NAME = c:\pwwork\pwwid001\SWARTZRW\des37779\k	USER NAME = swartzrw	DESIGNED -	REVISED -
enbridge.dgn		DRAWN -	REVISED -
PLOT SCALE = 20.0000' / IN.		CHECKED -	REVISED -
PLOT DATE = 9/28/2009		DATE -	REVISED -

STATE OF ILLINOIS
DEPARTMENT OF TRANSPORTATION

STRUCTURAL REPAIR - PARAPET
SN 058-0096 (WB)

SCALE: N/A SHEET NO. 12 OF 21 SHEETS STA. TO STA.

F.A.I. RTE.	SECTION	COUNTY	TOTAL SHEETS	SHEET NO.
72	66(B,HVB,HB-1)BR	MACON	83	56
FED. ROAD DIST. NO. ILLINOIS FED. AID PROJECT			CONTRACT NO. 74343	