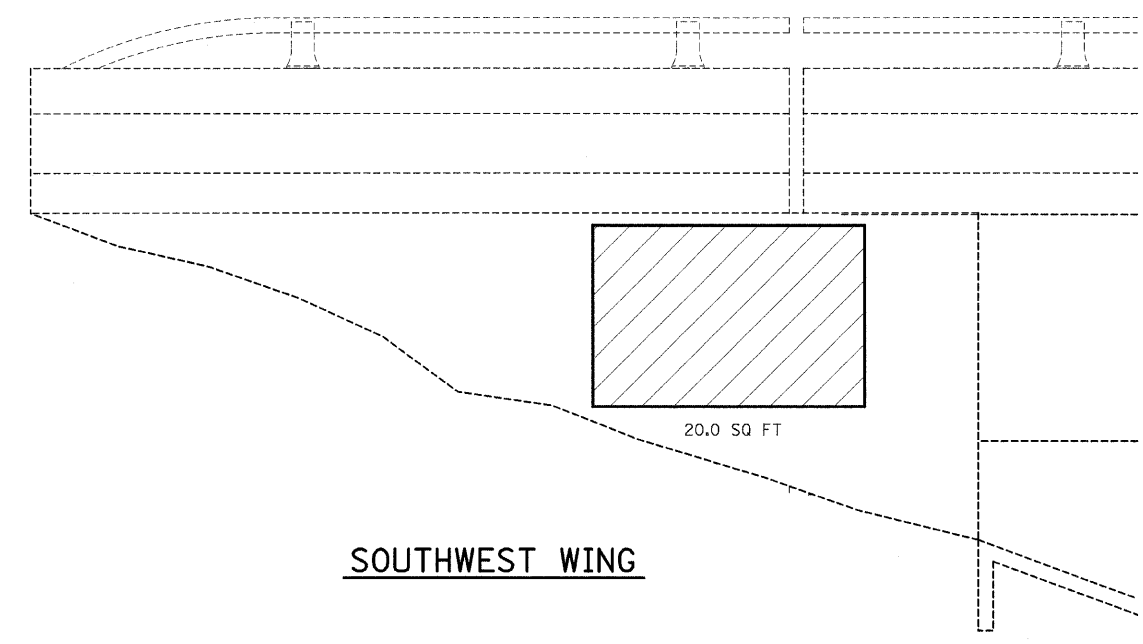
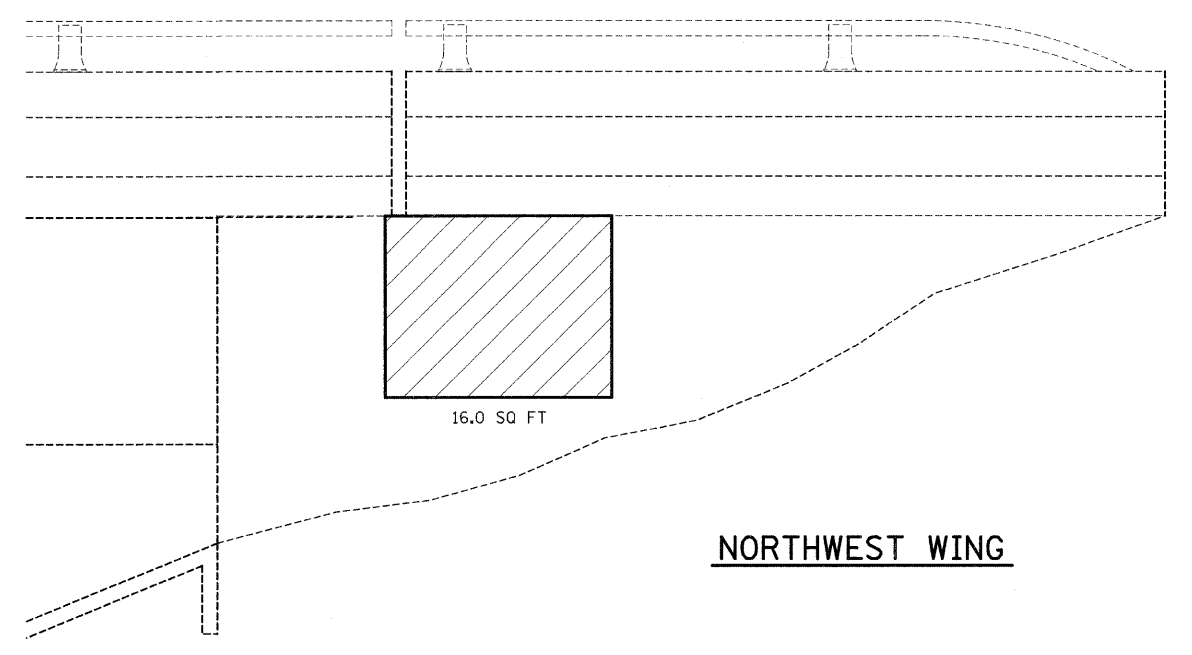


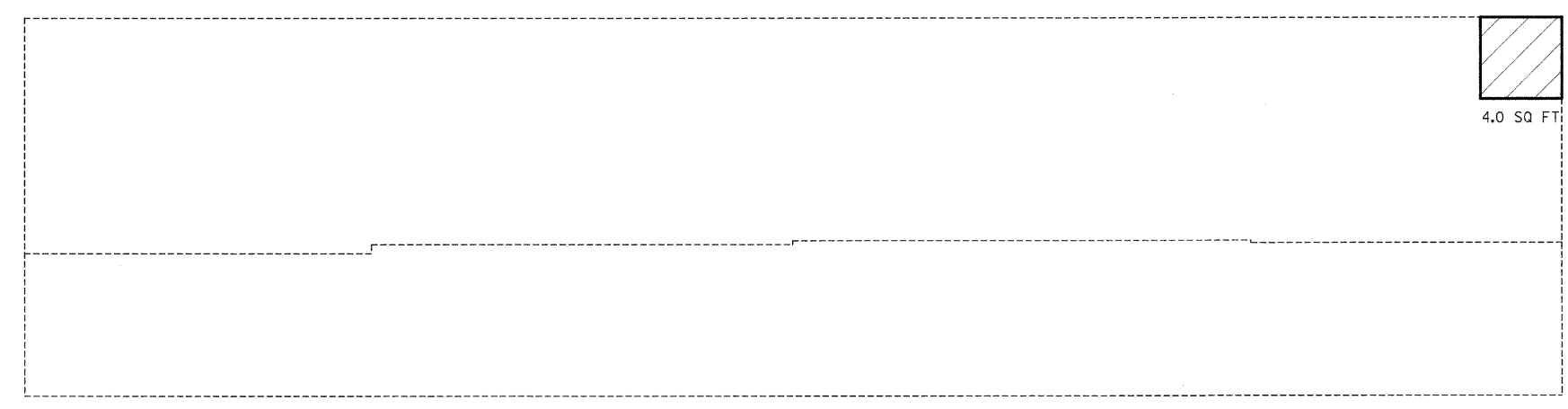
NOTE: QUANTITIES ARE ESTIMATED. ACTUAL QUANTITIES TO BE DETERMINED BY THE RESIDENT ENGINEER.




SOUTHWEST WING



NORTHWEST WING



WEST ABUTMENT FACE

 Structural Repair of Concrete (Depth < 5")

FILE NAME = c:\pw\work\PWIDOT\SWARTZRW\dms37779\k...enbridge.dgn	USER NAME = swartzr	DESIGNED -	REVISED -	STATE OF ILLINOIS DEPARTMENT OF TRANSPORTATION	STRUCTURAL REPAIR - WEST ABUTMENT SN 058-0097			F.A.I. RTE. 72	SECTION 66(B,HVB,HB-1BR)	COUNTY MACON	TOTAL SHEETS 83	SHEET NO. 74
PLOT SCALE = 20.0000' / IN.	CHECKED -	REVISED -	REVISED -		SCALE: N/A	SHEET NO. 9 OF 17 SHEETS	STA.	TO STA.	CONTRACT NO. 74343			
PLOT DATE = 9/28/2009	DATE -	REVISED -	REVISED -		FED. ROAD DIST. NO. ILLINOIS FED. AID PROJECT							