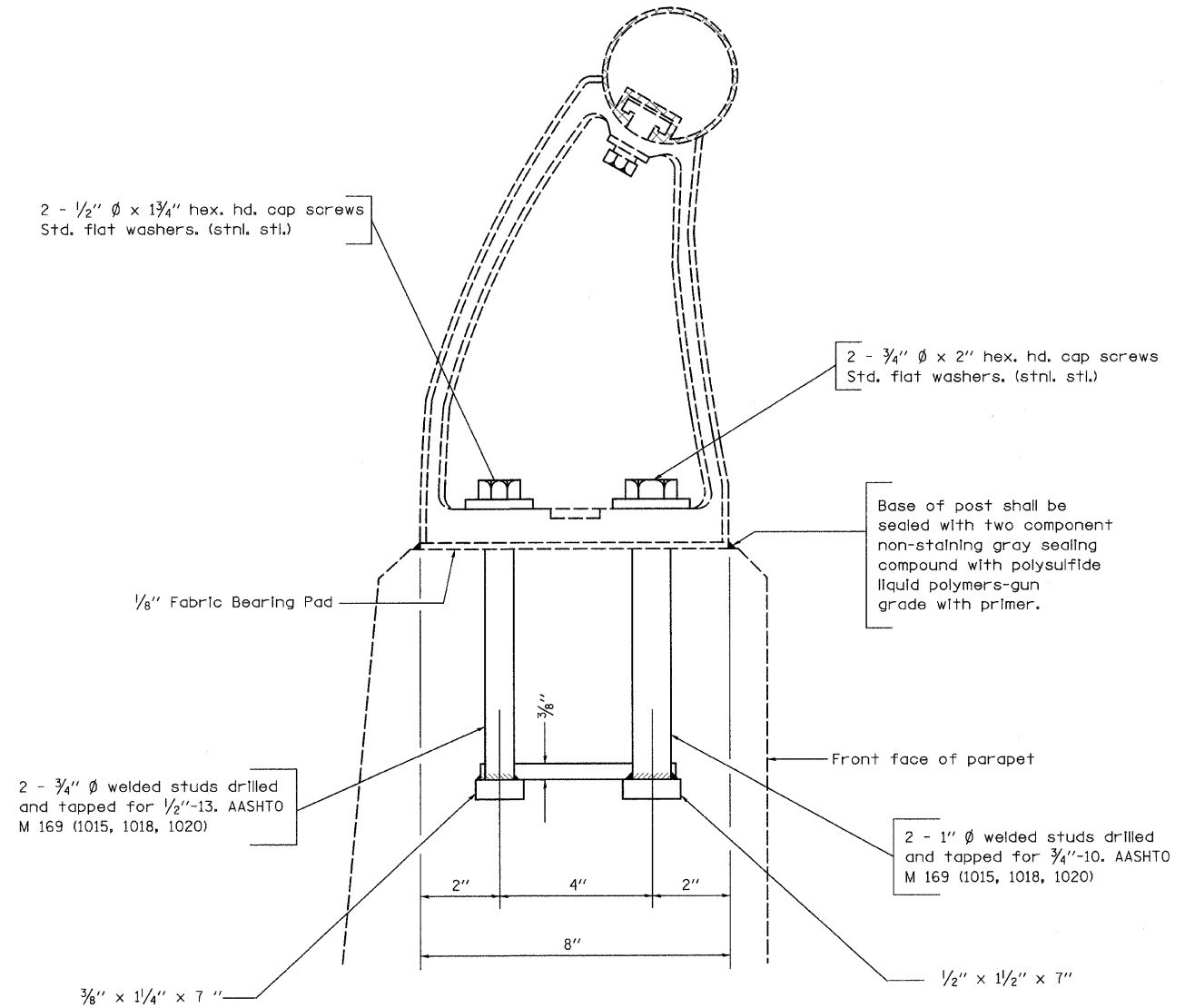


Note: Post anchorage supports are to be removed and replaced during construction. New bolts, shim plates, and post support anchor assemblies are to be provided.



FILE NAME = c:\pw_work\PWIDOT\SWARTZRW\dms37779\k...enbridge.dgn	USER NAME = swartzrw	DESIGNED -	REVISED -	STATE OF ILLINOIS DEPARTMENT OF TRANSPORTATION	RAIL SUPPORT ANCHOR DETAILS			F.A.I. RTE. 72	SECTION 66(B,HVB,HB-1)BR	COUNTY MACON	TOTAL SHEETS 83	SHEET NO. 76
PLOT SCALE = 20.0000' / IN.	CHECKED -	REVISED -	SCALE: N/A					SHEET NO. 11 OF 17 SHEETS	STA.	TO STA.	CONTRACT NO. 74343	
PLOT DATE = 9/28/2009	DATE -	REVISED -	FED. ROAD DIST. NO. ILLINOIS FED. AID PROJECT									