

STATE OF ILLINOIS
DEPARTMENT OF TRANSPORTATION
DIVISION OF HIGHWAYS

PROPOSED HIGHWAY PLANS

FOR INDEX OF SHEETS, SEE SHEET NO. 2

FAI ROUTE 57
SECTION D7 BRIDGE PAINTING 2010-1

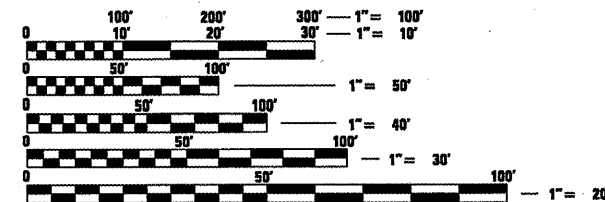
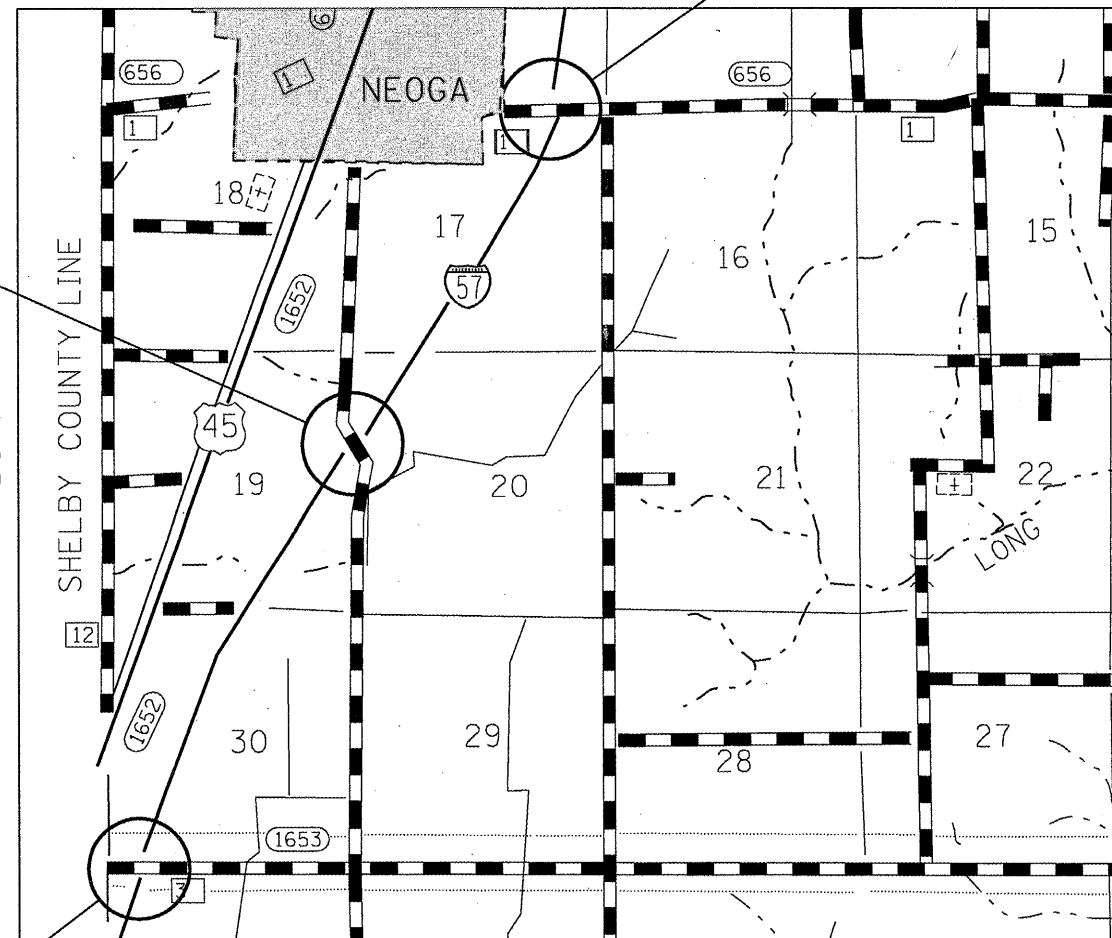
BRIDGE PAINTING
CUMBERLAND COUNTY

C-97-114-09

LOCATION #3
SN 018-0015

LOCATION #2
SN 018-0032

LOCATION #1
SN 018-0055



FULL SIZE PLANS HAVE BEEN PREPARED USING STANDARD ENGINEERING SCALES. REDUCED SIZED PLANS WILL NOT CONFORM TO STANDARD SCALES. IN MAKING MEASUREMENTS ON REDUCED PLANS, THE ABOVE SCALES MAY BE USED.

J.U.L.I.E.
JOINT UTILITY LOCATION INFORMATION FOR EXCAVATION
1-800-892-0123
OR 811

PROJECT ENGINEER: TOM RONAN
PROJECT MANAGER: KEVIN BRADY

CONTRACT NO. 74401

F.A.I. RTE.	SECTION	COUNTY	TOTAL SHEETS	SHEET NO.
57		CUMBERLAND	12	1
		ILLINOIS	CONTRACT NO. 74401	

D7 BRIDGE PAINTING 2010-1

D-97-058-09



LOCATION OF SECTION INDICATED THUS: ———

STATE OF ILLINOIS
DEPARTMENT OF TRANSPORTATION
DIVISION OF HIGHWAYS

SUBMITTED *October 28, 20 09*

Ross L. Dinkell
DEPUTY DIRECTOR OF HIGHWAYS, REGION ENGINEER

December 4, 20 09
Charles J. Ingersoll
ENGINEER OF DESIGN AND ENVIRONMENT

December 4, 20 09
Christine M. Reed
DIRECTOR OF HIGHWAYS, CHIEF ENGINEER

PRINTED BY THE AUTHORITY
OF THE STATE OF ILLINOIS