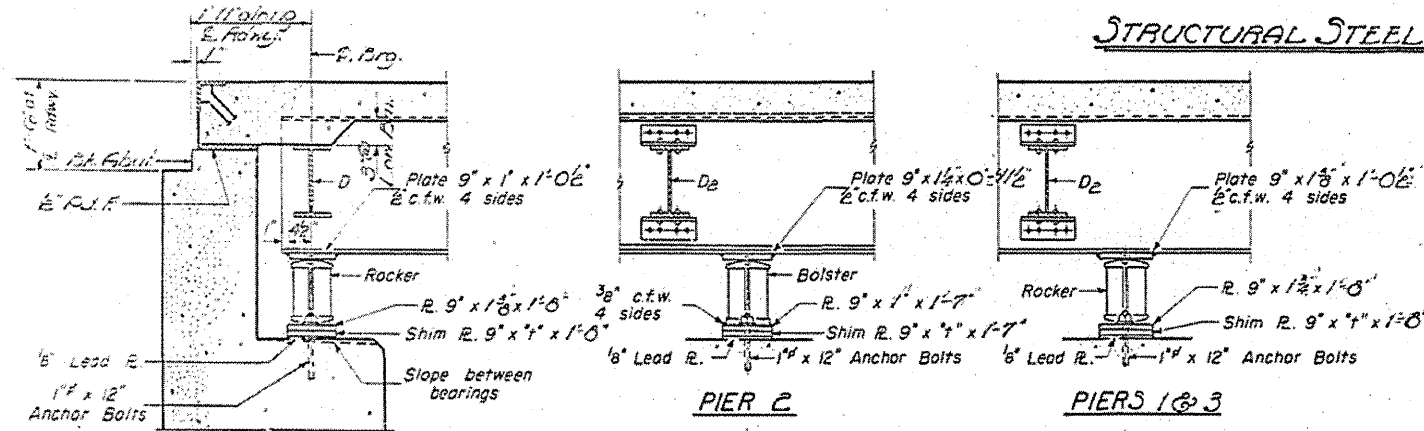
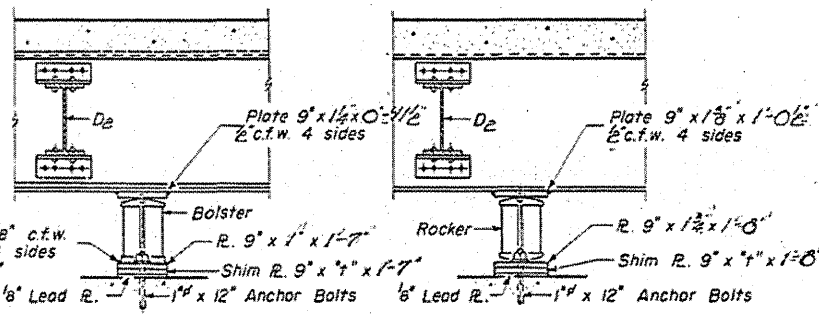


**STRUCTURAL STEEL LAYOUT**

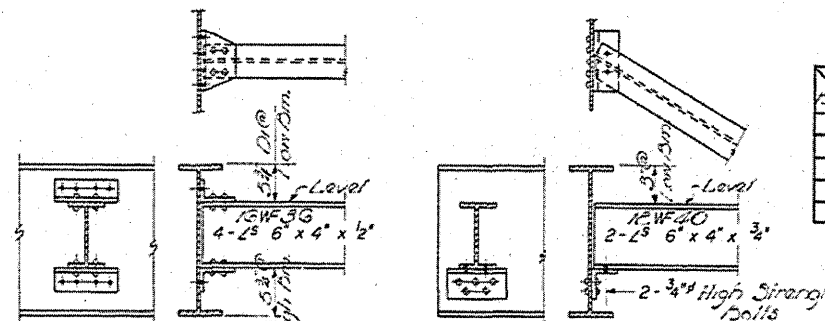


**SECTION AT ABUTMENT**



**PIER 2**

**PIERS 1 & 3**



**DIAPHRAGM D1 & D2**

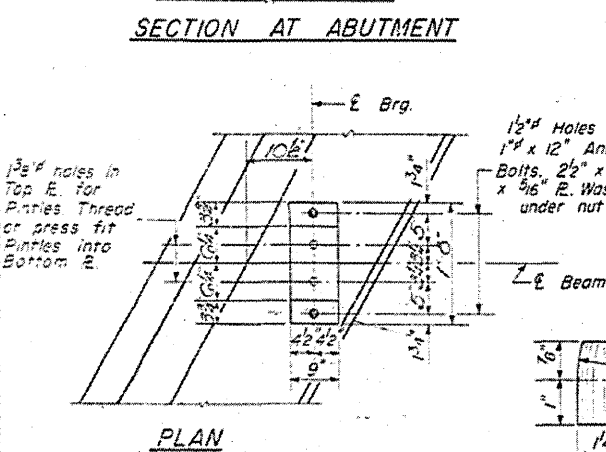
**DIAPHRAGM D**

**ELEVATIONS OF TOP OF BEAMS**

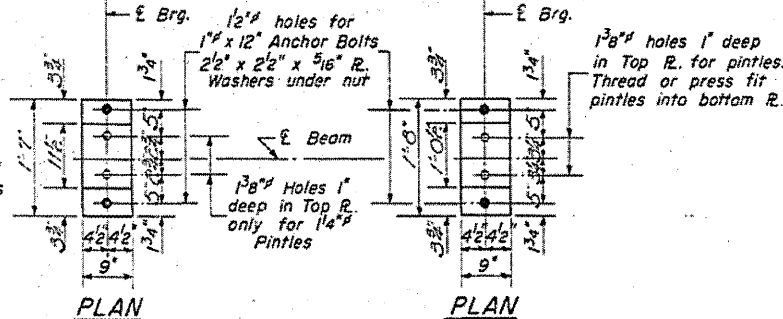
Span	Abutment	Pier 1	Pier 2	Pier 3	Abutment
1	67'-0"	67'-0"	67'-0"	67'-0"	67'-0"
2	67'-0"	67'-0"	67'-0"	67'-0"	67'-0"
3	67'-0"	67'-0"	67'-0"	67'-0"	67'-0"
4	67'-0"	67'-0"	67'-0"	67'-0"	67'-0"
5	67'-0"	67'-0"	67'-0"	67'-0"	67'-0"

**"E" DIMENSIONS**

Span	Abutment	Pier 1	Pier 2	Pier 3	Abutment
1	67'-0"	67'-0"	67'-0"	67'-0"	67'-0"
2	67'-0"	67'-0"	67'-0"	67'-0"	67'-0"
3	67'-0"	67'-0"	67'-0"	67'-0"	67'-0"
4	67'-0"	67'-0"	67'-0"	67'-0"	67'-0"
5	67'-0"	67'-0"	67'-0"	67'-0"	67'-0"

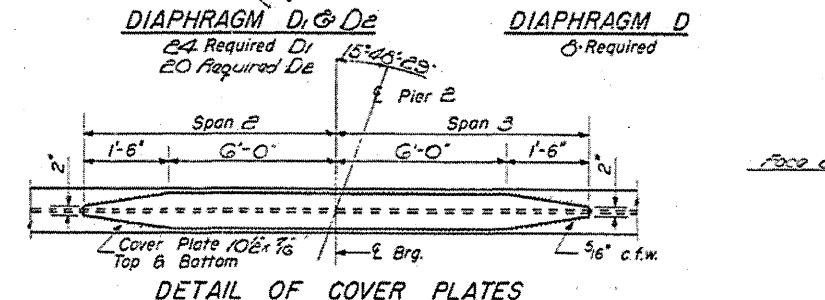


**PLAN**

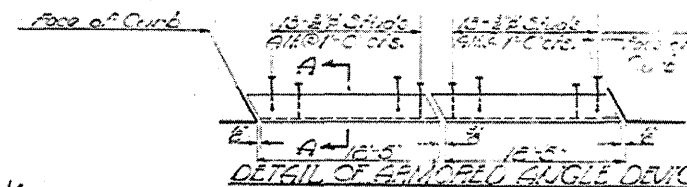


**PLAN**

**PLAN**

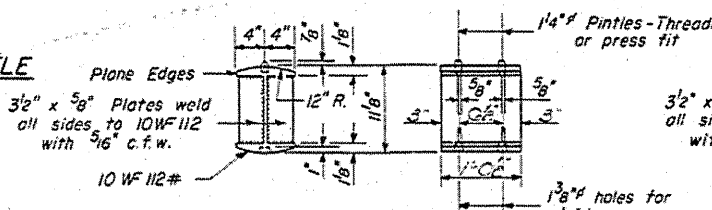


**DETAIL OF COVER PLATES**

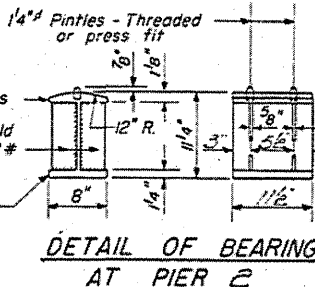


**DETAIL OF ARMORED ANGLE DEVICE**

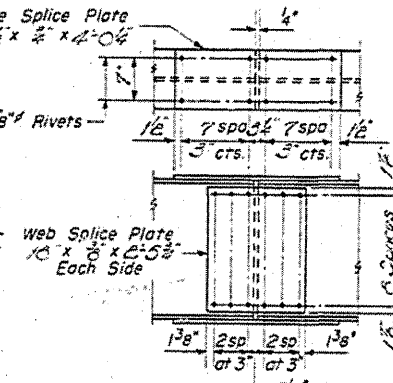
**DETAIL OF PINTLE**



**DETAIL OF BEARING AT PIERS 1, 3 & ABUTS.**



**DETAIL OF BEARING AT PIER 2**



**DETAIL OF SPLICE**

DESIGNED *Miss E. Sander*  
CHECKED *Walter Perry*  
EXAMINED *W.E. Bauman*  
APPROVED *W.E. Bauman*

MARCH 14 1962

1/2" Vent holes @ 12" cts. for  
1/2" bolts set on edge  
line. All bolts shall be  
burned, soaked in oil good  
off flush with back of an-  
gle after forms are re-  
moved.

**SECTION 4-6**

**STRUCTURAL STEEL**  
**F.A. RT. 57 - SEC. 18-11-15-1**  
**CUMBERLAND COUNTY**  
**STA. 5836 + 11.39**