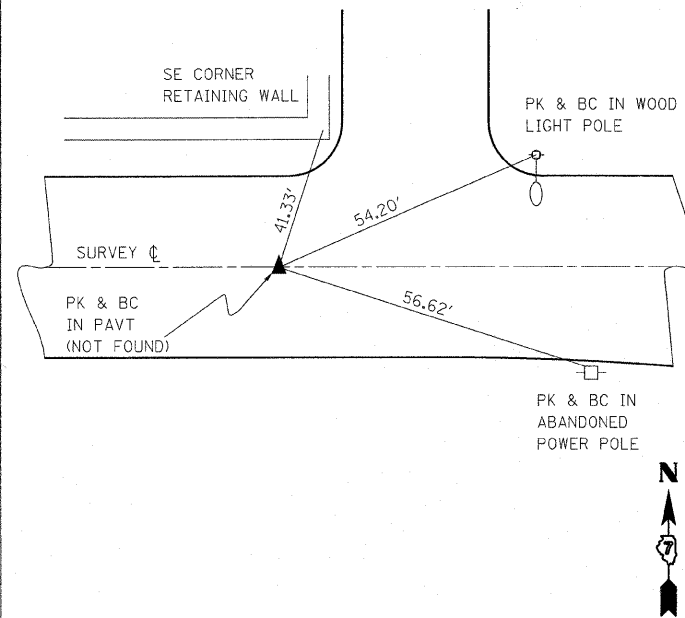
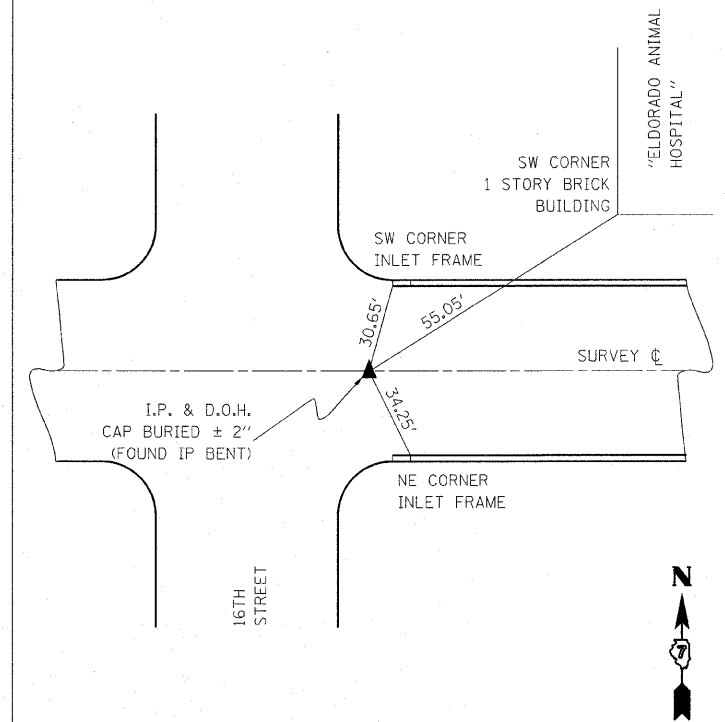


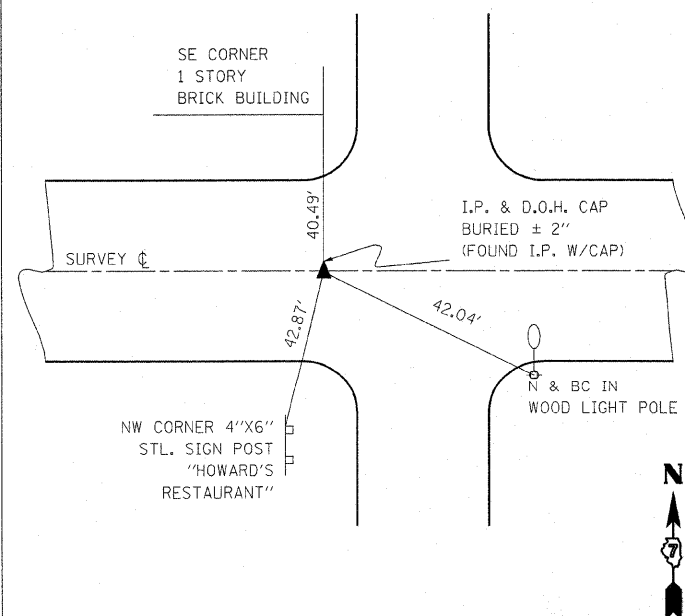
P.C. STA. 132+55.47 (BK)=
STA. 104+00.00 (AH)



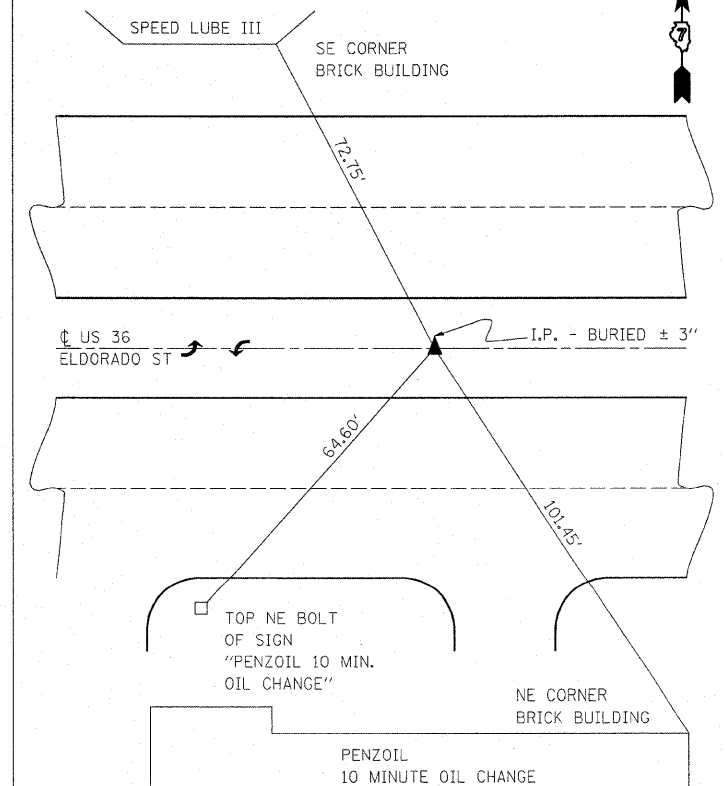
P.I. STA. 118+58.54



P.I. STA. 123+92.86



P.I. STA. 89+90.37



FILE NAME =	USER NAME = teasleyck	DESIGNED -	REVISED -
g:\pw_work\PWIDOT\TEASLEYCK\0155961\074421-tues.dgn		DRAWN -	REVISED -
PLOT SCALE = 50,000 / IN.		CHECKED -	REVISED -
PLOT DATE = 10/16/2009		DATE -	REVISED -

STATE OF ILLINOIS
DEPARTMENT OF TRANSPORTATION

PERMANENT SURVEY MARKERS

SCALE: SHEET NO. OF SHEETS STA. TO STA.

F.A.P. RTE.	SECTION	COUNTY	TOTAL SHEETS	SHEET NO.
323	(132-1,137)RS-3	Macon	12	6
CONTRACT NO. 74421				
ILLINOIS FED. AID PROJECT				