

STATE OF ILLINOIS  
DEPARTMENT OF TRANSPORTATION

DIVISION OF HIGHWAYS

**PROPOSED  
HIGHWAY PLANS**

FAP ROUTE 323 (US 36)  
SECTION (13Z-1, 137Z)RS-3  
PROJECT: ACF-0323(027)  
HMA RESURFACING  
MACON COUNTY

C-97-139-09

F.A.P. RTE.	SECTION	COUNTY	TOTAL SHEETS	SHEET NO.
323	(13Z-1,137Z)RS-3	MACON	12	1
ILLINOIS			CONTRACT NO. 74421	

FOR INDEX OF SHEETS, SEE SHEET NO. 2

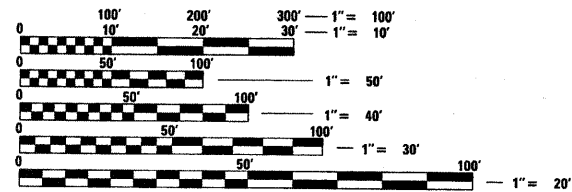
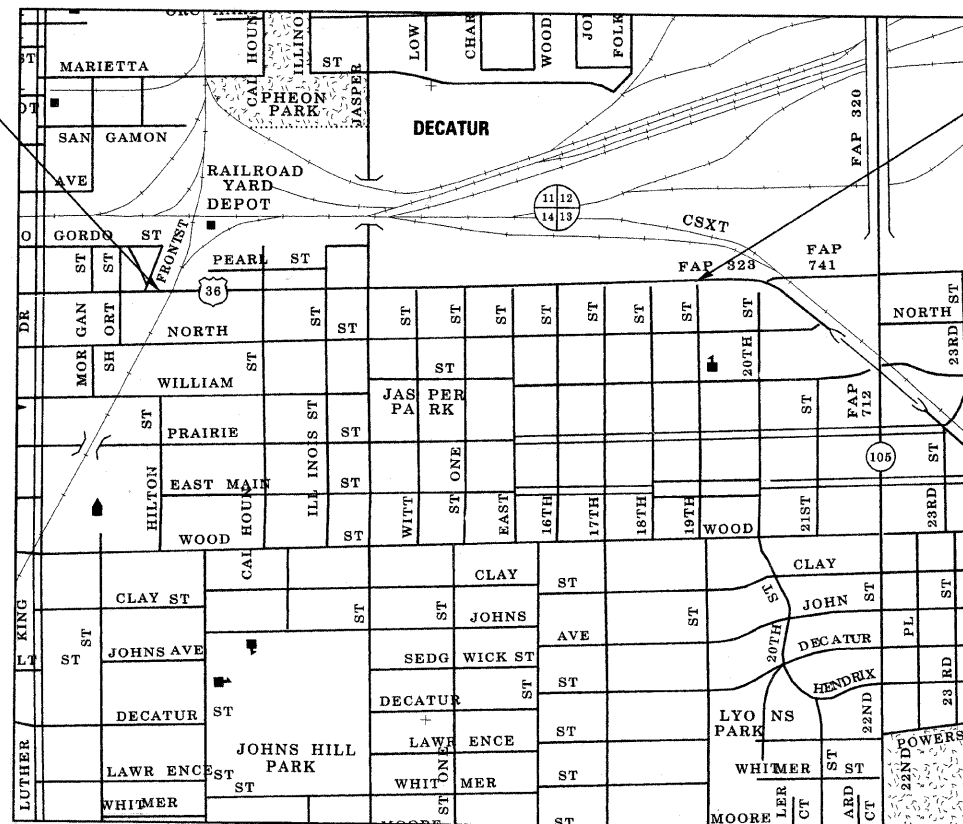
ADT = 20250 (2009)

RR OMISSION  
STA 87+84 TO STA 88+40



PROJECT BEGINS STA 87+53.47

PROJECT ENDS 130+03



FULL SIZE PLANS HAVE BEEN PREPARED USING STANDARD ENGINEERING SCALES. REDUCED SIZED PLANS WILL NOT CONFORM TO STANDARD SCALES. IN MAKING MEASUREMENTS ON REDUCED PLANS, THE ABOVE SCALES MAY BE USED.

J.U.L.I.E.  
JOINT UTILITY LOCATION INFORMATION FOR EXCAVATION  
1-800-892-0123  
OR 811

PROJECT ENGINEER: MARK DAUGHERTY  
PROJECT MANAGER: JOYCE HEMMEN

CONTRACT NO. 74421

GROSS LENGTH = 4250 FT. = 0.805 MILE  
NET LENGTH = 4194 FT. = 0.794 MILE

STATE OF ILLINOIS  
DEPARTMENT OF TRANSPORTATION  
DIVISION OF HIGHWAYS

SUBMITTED October 16 2009

*Regan L. Dinkel*  
DEPUTY DIRECTOR OF HIGHWAYS, REGION ENGINEER

December 4, 2009  
*Charles G. Janssen*  
ENGINEER OF DESIGN AND ENVIRONMENT

December 4, 2009  
*Christine M. Reed*  
DIRECTOR OF HIGHWAYS, CHIEF ENGINEER

PRINTED BY THE AUTHORITY  
OF THE STATE OF ILLINOIS

**GENERAL NOTES**

THIS PROJECT IS LOCATED ON FAP 323 (US 36) IN MACON COUNTY, FROM THE ICRR RR TO JUST EAST OF 19TH STREET IN DECATUR. THE WORK INCLUDED IN SECTION (13Z-1, 137Z)RS-3 CONSISTS OF COMBINATION CONCRETE CURB AND GUTTER REMOVAL AND REPLACEMENT, PAVEMENT PATCHING, MILLING, HOT-MIX ASPHALT RESURFACING, PAVEMENT MARKING, AND OTHER WORK NECESSARY TO COMPLETE THE SECTION.

PAVEMENT MARKING SHALL BE APPLIED IN ACCORDANCE WITH SECTION 780 OF THE STANDARD SPECIFICATIONS. SHORT TERM PAVEMENT MARKING SHALL BE APPLIED TO THE MILLED SURFACE, BITUMINOUS MATERIALS (PRIME COAT), LEVEL BINDER, AND BITUMINOUS SURFACE COURSE AS SPECIFIED IN SECTION 703 OF THE STANDARD SPECIFICATIONS. TEMPORARY TAPE SHALL BE USED ON THE SURFACE COURSE AND PAINT SHALL BE USED ON MILLED SURFACES.

THE TOTAL QUANTITY OF THERMOPLASTIC PAVEMENT MARKING-LINE 4" CONSISTS OF 8874 FEET OF YELLOW.

THE TOTAL QUANTITY OF RAISED REFLECTIVE PAVEMENT MARKERS IS 170 2-WAY AMBER, 21 ONE WAY AMBER, AND 104 ONE WAY CRYSTAL.

THE EXISTING PAVEMENT SHALL BE PATCHED IN ACCORDANCE WITH SECTION 442 OF THE STANDARD SPECIFICATIONS AND THE SPECIAL PROVISIONS. THE QUANTITY OF PATCHING SHOWN ON THE PLANS IS AN ESTIMATE ONLY AND THE FINAL LOCATIONS AND QUANTITY SHALL BE DETERMINED BY THE ENGINEER IN THE FIELD.

BITUMINOUS MATERIALS (PRIME COAT) SHALL BE EITHER RC-70 OR AN EMULSIFIED POLYMER PRIME SS-1HP.

HOT-MIX ASPHALT SHALL BE PLACED AROUND MANHOLES, VALVE VAULTS, AND OTHER APPURTANCES FOLLOWING HMA SURFACE REMOVAL AND PLACEMENT OF LEVELING BINDER AS DIRECTED BY THE ENGINEER. THE PLACEMENT AND REMOVAL OF THE HOT-MIX ASPHALT WILL NOT BE PAID FOR SEPARATELY BUT SHALL BE INCLUDED IN THE COST OF THE CONTRACT.

THE ADJACENT SECTION OF US 36 TO THE WEST MAY BE UNDER CONSTRUCTION BY THE CITY OF DECATUR CONCURRENTLY WITH THIS PROJECT. THE CONTRACTOR SHALL COORDINATE CONSTRUCTION ACTIVITIES WITH THE CITY TO ENSURE CONTINUITY AND EFFICIENT TRAFFIC FLOW.

THE CONTRACTOR SHALL PROVIDE INTERNET ACCESS TO THE BITUMINOUS PLANT QUALITY CONTROL LAB SO THAT BITUMINOUS PLANT REPORTS CAN BE E-MAILED TO THE DISTRICT HEADQUARTERS. THIS WORK SHALL BE INCLUDED IN THE COST OF ALL BITUMINOUS ITEMS.

THE RESIDENT ENGINEER SHALL BE THE SOLE JUDGE CONCERNING THE CURING TIME FOR THE VARIOUS BITUMINOUS LIFTS.

THE FOLLOWING MIXTURE REQUIREMENTS ARE APPLICABLE FOR THIS PROJECT:

MIXTURE USE: LEVEL BINDER  
 APPLICATION: LEVELING BINDER, (MACHINE METHOD), N90  
 PG GRADE: PG 64-22  
 DESIGN AIR VOIDS: 4.0% @ NDESIGN = 90  
 MIXTURE COMPOSITION: IL-9.5  
 FRICTION AGGREGATE: N/A

MIXTURE USE: SURFACE COURSE  
 APPLICATION: POLYMERIZED HOT-MIX ASPHALT SURFACE COURSE, MIX "D", N90  
 PG GRADE: SBS PG 70-22  
 DESIGN AIR VOIDS: 4.0% @ NDESIGN = 90  
 MIXTURE COMPOSITION: IL-9.5  
 FRICTION AGGREGATE: MIXTURE D

MIXTURE USE: PAVEMENT PATCHING  
 APPLICATION: HOT-MIX ASPHALT BINDER COURSE, IL-19.0, N70  
 PG GRADE: PG 64-22  
 DESIGN AIR VOIDS: 4.0% @ NDESIGN = 70  
 MIXTURE COMPOSITION: IL-19.0  
 FRICTION AGGREGATE: N/A

MIXTURE USE: INCIDENTAL HOT MIX ASPHALT SURFACING  
 APPLICATION: HOT-MIX ASPHALT SURFACE COURSE, MIX "C", N70  
 PG GRADE: PG 64-22  
 DESIGN AIR VOIDS: 4.0% @ NDESIGN = 70  
 MIXTURE COMPOSITION: IL-9.5  
 FRICTION AGGREGATE: MIXTURE C

MIXTURE USE: TEMPORARY RAMP SPECIAL AND TEMPORARY RAMP  
 APPLICATION: HOT-MIX ASPHALT SURFACE COURSE, MIX "C", N70  
 PG GRADE: PG 64-22  
 DESIGN AIR VOIDS: 4.0% @ NDESIGN = 70  
 MIXTURE COMPOSITION: IL-9.5  
 FRICTION AGGREGATE: MIXTURE C

THE FOLLOWING RATES OF APPLICATION HAVE BEEN USED IN CALCULATING PLAN QUANTITIES:

BITUMINOUS MATERIALS (PRIME COAT) 0.10 GAL/SQ YD  
 AGGREGATE (PRIME COAT) 4 LBS/SQ YD  
 HOT MIX ASPHALT 112 LBS/SQ YD/INCH

**INDEX OF SHEETS**

SHEET NO.	ITEM
1	COVER SHEET
2	INDEX OF SHEETS, LIST OF APPLICABLE HIGHWAY STANDARDS, GENERAL NOTES
3	SUMMARY OF QUANTITIES
4	TYPICAL SECTION
5	SCHEDULES AND ENTRANCE DETAIL
6	SURVEY TIES
7-10	STRIPING PLANS
11-12	TYPICAL APPLICATIONS OF PAVEMENT MARKINGS

THE FOLLOWING STANDARDS ARE A PART OF THESE PLANS AND ARE INCLUDED AFTER SHEET NO. 13:

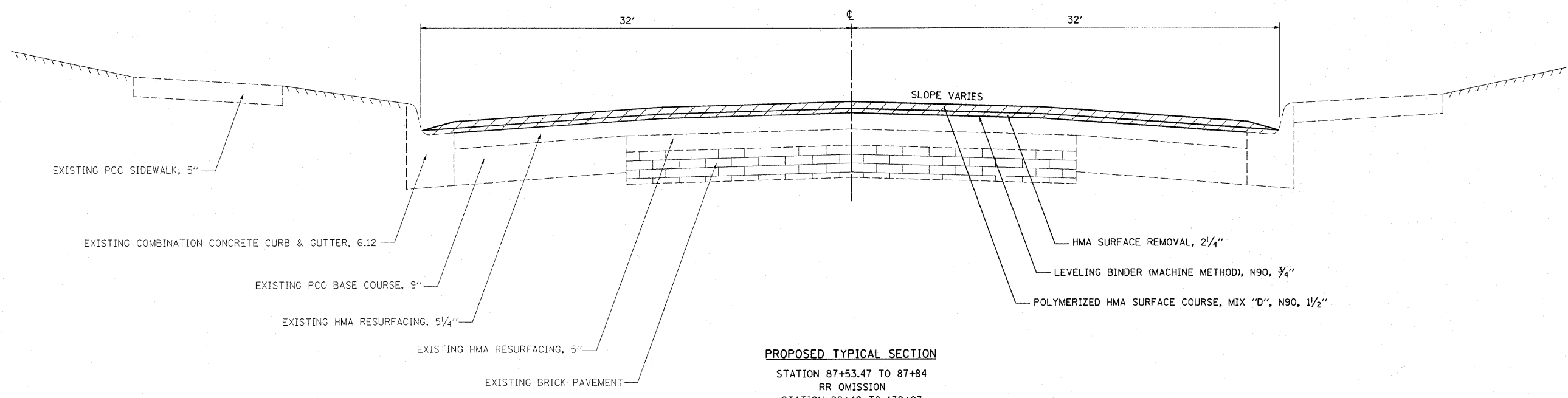
STD. NO.	DESCRIPTION
000001-05	STANDARD SYMBOLS, ABBREVIATIONS AND PATTERNS
442201-03	CLASS C AND D PATCHES
604006-04	FRAME AND GRATES, TYPE 3
667101-01	PERMANENT SURVEY MARKERS
701426-03	LANE CLOSURE, MULTILANE, INTERMITTENT OR MOVING OPER. FOR SPEEDS ? 45 MPH
701602-04	URBAN LANE CLOSURE, MULTILANE, 2W WITH BIDIRECTIONAL LEFT TURN LANE
701701-06	URBAN LANE CLOSURE, MULTILANE INTERSECTION
701901-01	TRAFFIC CONTROL DEVICES
780001-02	TYPICAL PAVEMENT MARKINGS
781001-03	TYPICAL APPLICATIONS RAISED REFLECTIVE PAVEMENT MARKERS

# SUMMARY OF QUANTITIES

SUMMARY OF QUANTITIES			URBAN TOTAL QUANTITIES	CONSTRUCTION TYPE CODE	
CODE NO	ITEM	UNIT		1000 80% FEDERAL 20% STATE	
40600100	BITUMINOUS MATERIALS (PRIME COAT)	GALLON	2982	2982	
40600300	AGGREGATE (PRIME COAT)	TON	60	60	
40600645	LEVELING BINDER (MACHINE METHOD), N90	TON	1252	1252	
40600990	TEMPORARY RAMP	SQ YD	364	364	
40600995	TEMPORARY RAMP, SPECIAL	SQ YD	1497	1497	
40603545	POLYMERIZED HOT-MIX ASPHALT SURFACE COURSE, MIX "D", N90	TON	2505	2505	
40800050	INCIDENTAL HOT-MIX ASPHALT SURFACING	TON	28	28	
44000158	HOT-MIX ASPHALT SURFACE REMOVAL, 2 1/4"	SQ YD	29819	29819	
44000500	COMBINATION CURB AND GUTTER REMOVAL	FOOT	460	460	
44201785	CLASS D PATCHES, TYPE I, 12 INCH	SQ YD	3	3	
44201789	CLASS D PATCHES, TYPE II, 12 INCH	SQ YD	196	196	
44201794	CLASS D PATCHES, TYPE III, 12 INCH	SQ YD	70	70	
44201796	CLASS D PATCHES, TYPE IV, 12 INCH	SQ YD	224	224	
44201857	CLASS D PATCHES, TYPE IV, 17 INCH	SQ YD	64	64	
60404300	FRAMES AND GRATES, TYPE 3	EACH	1	1	
60603800	COMBINATION CONCRETE CURB AND GUTTER, TYPE B-6.12	FOOT	460	460	
66700095	PERMANENT SURVEY MARKERS	EACH	4	4	
67000500	ENGINEER'S FIELD OFFICE, TYPE B	CAL MO	3	3	
67100100	MOBILIZATION	L SUM	1	1	
70102632	TRAFFIC CONTROL AND PROTECTION, STANDARD 701602	L SUM	1	1	
70102635	TRAFFIC CONTROL AND PROTECTION, STANDARD 701701	L SUM	1	1	
70300100	SHORT-TERM PAVEMENT MARKING	FOOT	4693	4693	
70301000	WORK ZONE PAVEMENT MARKING REMOVAL	SQ FT	546	546	
* 78000100	THERMOPLASTIC PAVEMENT MARKING - LETTERS AND SYMBOLS	SQ FT	545	545	
* 78000200	THERMOPLASTIC PAVEMENT MARKING - LINE 4"	FOOT	8874	8874	
* 78000400	THERMOPLASTIC PAVEMENT MARKING - LINE 6"	FOOT	3236	3236	
* 78000600	THERMOPLASTIC PAVEMENT MARKING - LINE 12"	FOOT	134	134	
* 78000650	THERMOPLASTIC PAVEMENT MARKING - LINE 24"	FOOT	202	202	
* 78100100	RAISED REFLECTIVE PAVEMENT MARKER	EACH	295	295	
Z0048665	RAILROAD PROTECTIVE LIABILITY INSURANCE	L SUM	1	1	

*\*Specialty Items*

FILE NAME =	USER NAME = teasleyck	DESIGNED -	REVISED -	<b>STATE OF ILLINOIS DEPARTMENT OF TRANSPORTATION</b>	<b>SUMMARY OF QUANTITIES</b>	F.A.P. RTE.	SECTION	COUNTY	TOTAL SHEETS	SHEET NO.	
ca:\pwork\pwork\TEASLEYCK\0015596\0774421-sht-500.dgn		DRAWN -	REVISED -			323	(132-1,137)RS-3	Macon	12	3	
PLOT SCALE = 50.0000" / IN.		CHECKED -	REVISED -			CONTRACT NO. 74421					
PLOT DATE = 10/16/2009		DATE -	REVISED -			ILLINOIS FED. AID PROJECT					



**PROPOSED TYPICAL SECTION**  
 STATION 87+53.47 TO 87+84  
 RR OMISSION  
 STATION 88+40 TO 130+03

FILE NAME =	USER NAME = teasleyck	DESIGNED -	REVISED -	<b>STATE OF ILLINOIS DEPARTMENT OF TRANSPORTATION</b>	<b>TYPICALS</b>			F.A.P. RTE.	SECTION	COUNTY	TOTAL SHEETS	SHEET NO.			
ct:\pwork\PWIDOT\TEASLEYCK\4015596\10774421-shr-typical.dgn		DRAWN -	REVISED -		SCALE:	SHEET NO.	OF	SHEETS	STA.	TO STA.	323	(132-1,137Z/RS-3	Macon	12	4
PLOT SCALE = 50.0000' / 1" IN.		CHECKED -	REVISED -		CONTRACT NO. 74421										
PLOT DATE = 10/16/2009		DATE -	REVISED -		ILLINOIS FED. AID PROJECT										

**CURB AND GUTTER REMOVE AND REPLACE SCHEDULE**

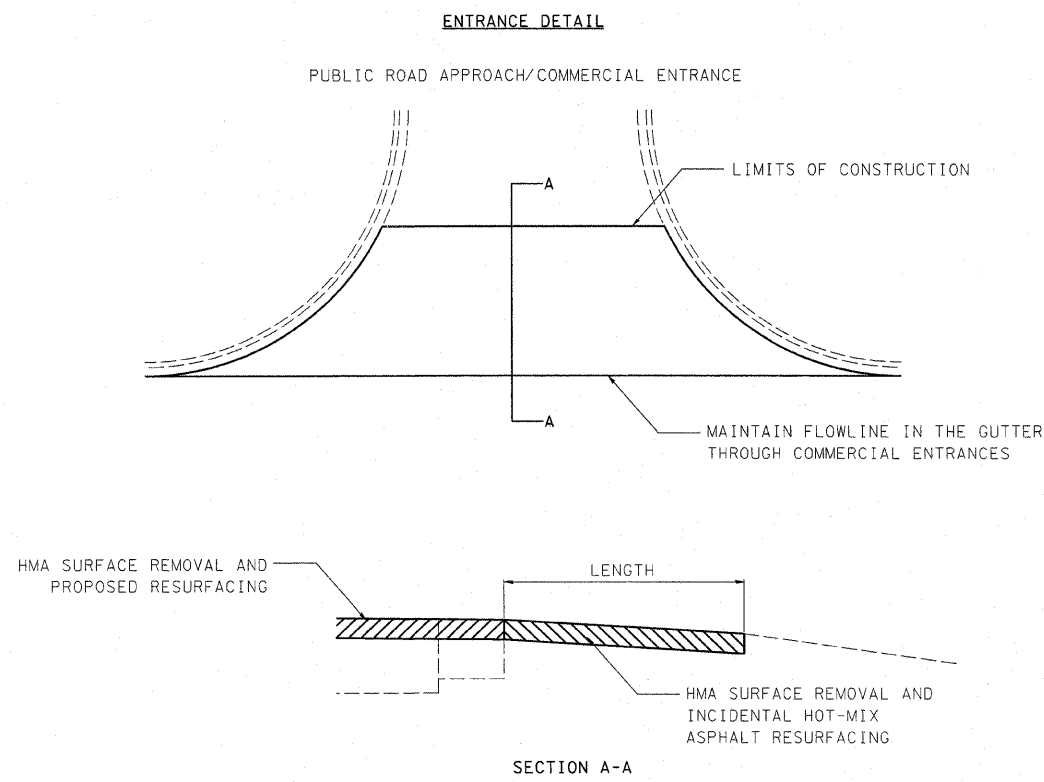
Station	Lane	Length
91+70	EBDL	11
93+06	EBDL	6
93+40	EBDL	8
100+40	EBDL	8
100+55	EBDL	8
101+45	EBDL	32
102+20	EBDL	26
109+45	EBDL	6
110+10	EBDL	5
111+83	EBDL	4
112+00	EBDL	5
113+08	EBDL	4
115+30	EBDL	5
116+00	EBDL	34
116+65	EBDL	13
119+30	EBDL	53
120+05	EBDL	13
96+33	WBDL	6
104+00	WBDL	26
104+20	WBDL	5
104+40	WBDL	6
104+60	WBDL	7
105+30	WBDL	4
105+50	WBDL	8
105+70	WBDL	7
105+93	WBDL	4
106+45	WBDL	6
109+90	WBDL	10
110+07	WBDL	6
114+30	WBDL	38
115+75	WBDL	70
119+80	WBDL	6
120+30	WBDL	6
120+45	WBDL	5
Total Linear Feet		460

**PAVEMENT MARKING SCHEDULE**

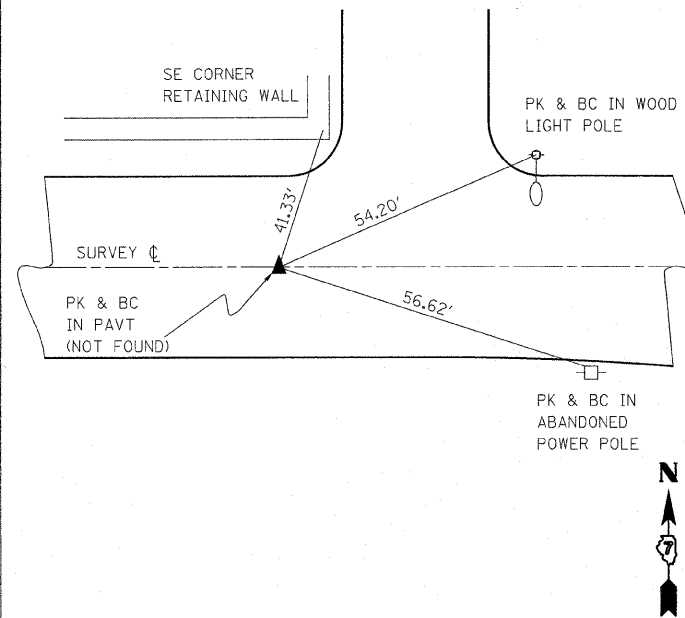
Location	Station to Station		Length	EA		SQ FT	SQ FT		FT	FT	FT	FT	EA	EA	EA
	EA	EA		EA	EA										
ICRR to Calhoun	88+73.	95+33.	660	411.0	411.0	92	193	1668	360	-	96	18	-	34	
Calhoun to Illinois	95+33.	100+24.	491	180.0	180.0	40	35.2	1073	339	66	22	8	3	18	
Illinois to Jasper	100+24.	103+57.	333	72.0	591.0	74	35.2	120	1167	-	62	16	-	12	
Jasper to Witt	103+57.	108+54.	497	180.0	180.0	40	35.2	814	310	68	22	8	18	-	
Witt to Stone	108+54.	111+07.	253	175.8	175.8	39	52.8	746	160	-	-	8	-	16	
Stone to East	111+07.	114+88.5	381.5	180.0	180.0	40	52.8	762	160	-	-	8	-	16	
East to End of Project	114+88.5	130+03.	1514.5	888.0	888.0	197	140.8	3691	740	-	-	38	-	74	
TOTALS				2086.	2605.8	522	545	8874	3236	134	202	104	21	170	
GRAND TOTALS				4693	522	545	8874	6472	3236	134	202	295			

SIDE	STATION	TYPE	LENGTH		INCIDENTAL HOT-MIX ASPHALT SURFACING	AGGREGATE SURFACE COURSE, TYPE B
			FOOT	TON		
LT	92+20	CE	3	1.3		
LT	93+86	CE	3	1.2		
RT	107+36	PRA	16	7.8		
RT	115+32	CE	8	2.8		
LT	115+68	CE	3	1.0		
LT	116+31	CE	2.5	0.5		
RT	123+76	CE	2.5	0.5		
RT	111+94	CE	2.5	0.4		
RT	112+50	CE	2.5	0.8		
RT	116+31	CE	3	0.9		
RT	117+00	CE	2.5	0.9		
RT	123+25	CE	2.5	0.5		
RT	124+60	CE	2.5	0.9		
LT	125+75	CE	3	0.7		
LT	129+43	PRA	14	7.6		

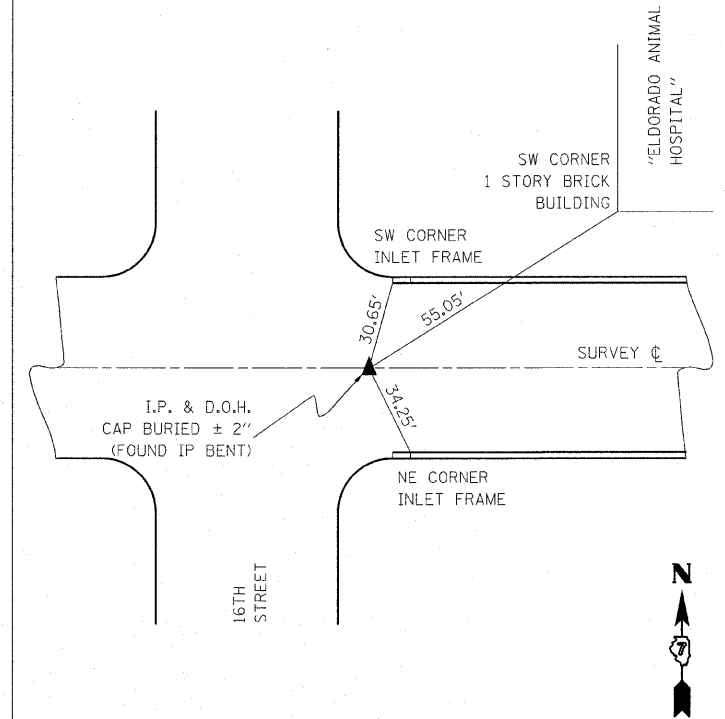
CE = COMMERCIAL ENTRANCE  
PRA = PUBLIC ROAD APPROACH



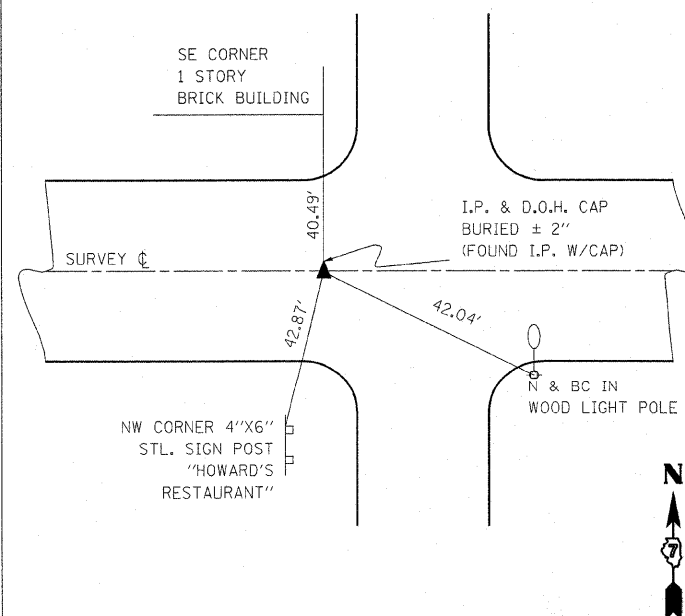
P.C. STA. 132+55.47 (BK)=  
STA. 104+00.00 (AH)



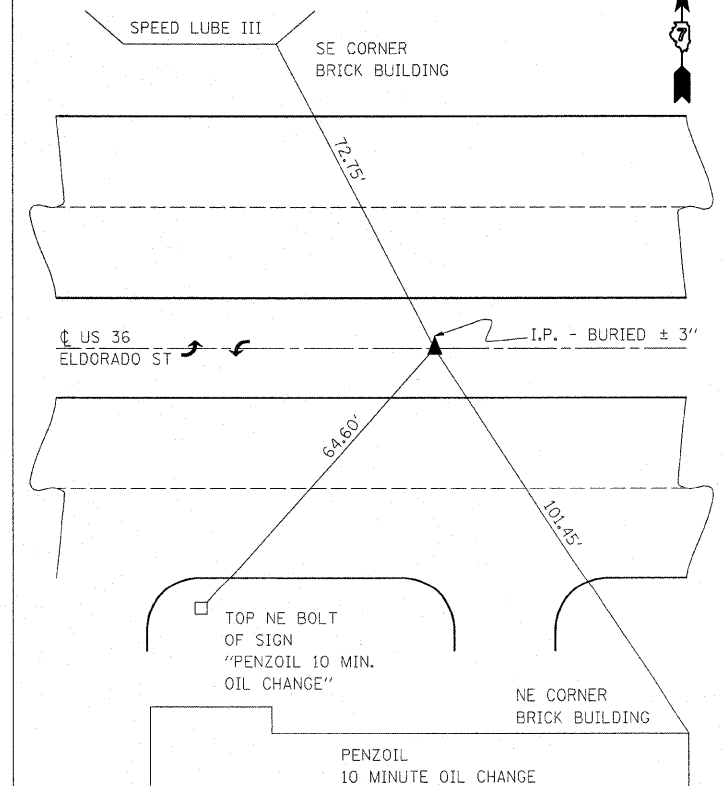
P.I. STA. 118+58.54



P.I. STA. 123+92.86



P.I. STA. 89+90.37



FILE NAME =	USER NAME = teasleyck	DESIGNED -	REVISED -
g:\pw_work\PWIDOT\TEASLEYCK\0155961\074421-tues.dgn		DRAWN -	REVISED -
PLOT SCALE = 50,000 / IN.		CHECKED -	REVISED -
PLOT DATE = 10/16/2009		DATE -	REVISED -

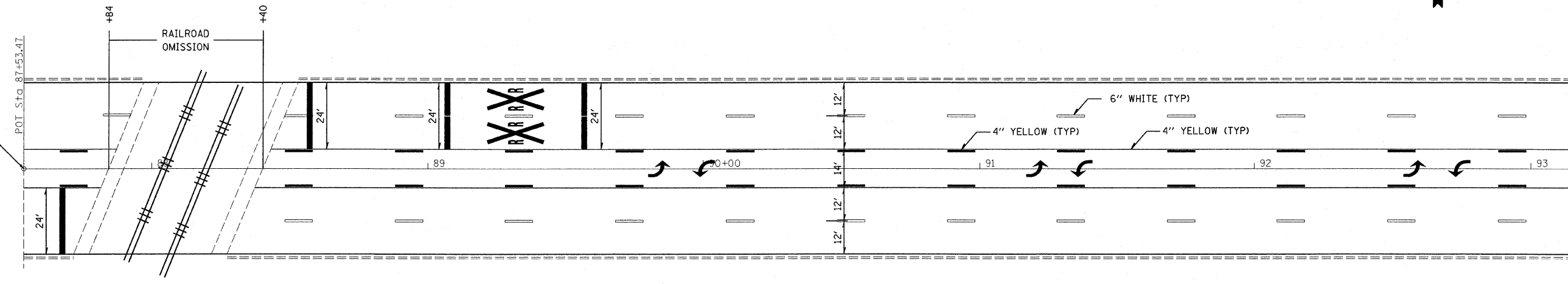
STATE OF ILLINOIS  
DEPARTMENT OF TRANSPORTATION

PERMANENT SURVEY MARKERS

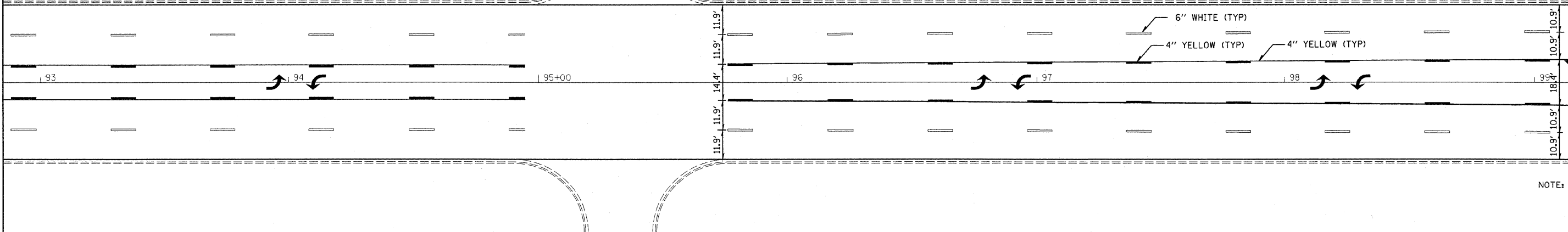
SCALE: SHEET NO. OF SHEETS STA. TO STA.

F.A.P. RTE.	SECTION	COUNTY	TOTAL SHEETS	SHEET NO.
323	(132-1,137)RS-3	Macon	12	6
CONTRACT NO. 74421				
ILLINOIS FED. AID PROJECT				

PROJECT BEGINS

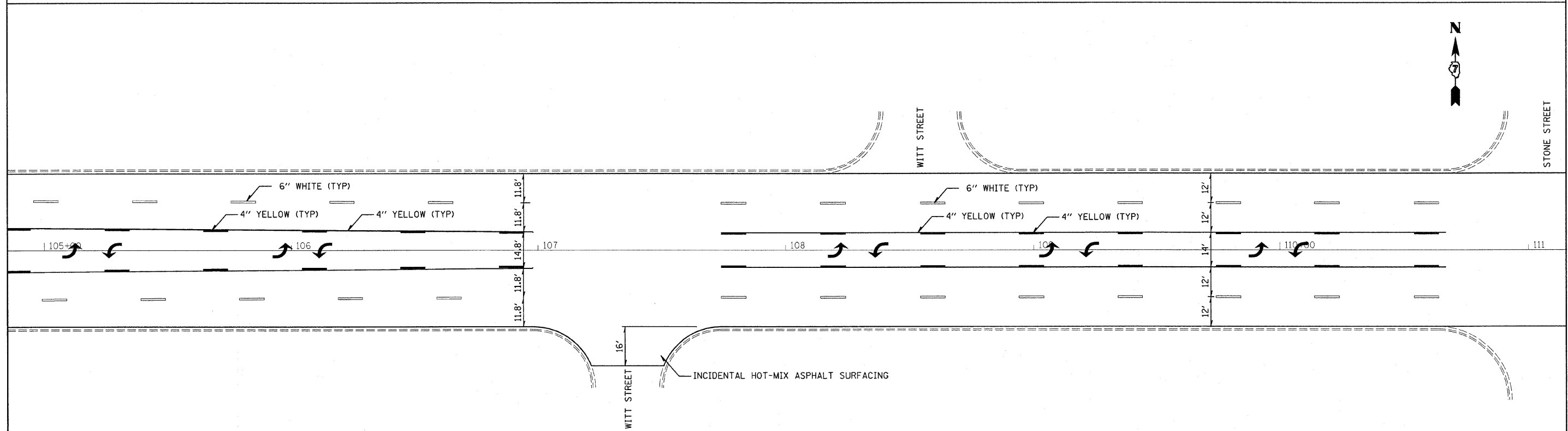
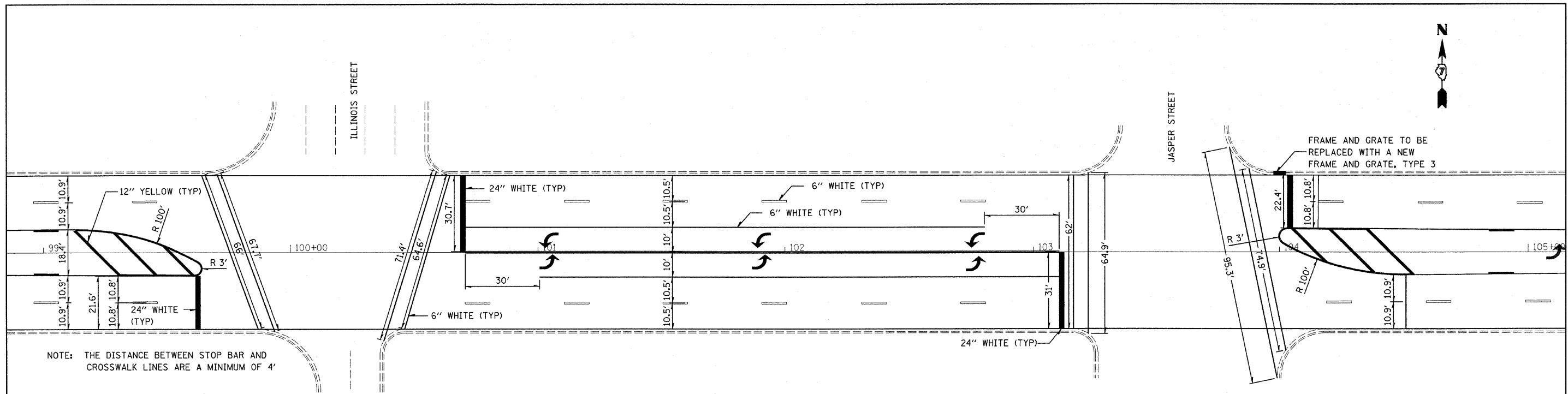


CALHOUN STREET



NOTE:

FILE NAME =	USER NAME = teasleyck	DESIGNED -	REVISED -	<b>STATE OF ILLINOIS DEPARTMENT OF TRANSPORTATION</b>	<b>PLAN SHEETS &amp; PAVEMENT MARKING PLANS</b>		F.A.P. RTE.	SECTION	COUNTY	TOTAL SHEETS	SHEET NO.				
c:\pw_work\pw\dot\teasleyck\ad0155961\0771421-shr-plan5.dgn		DRAWN -	REVISED -		SCALE:	SHEET NO.	OF	SHEETS	STA.	TO STA.	323	(132-1.137Z)RS-3	Macon	12	17
		CHECKED -	REVISED -												
		DATE -	REVISED -												
												CONTRACT NO. 74421			
												ILLINOIS FED. AID PROJECT			



FILE NAME =  
 c:\pwwork\pwwork\teasleyck\d0155961\0774421-sht-plan5.dgn

USER NAME = teasleyck  
 PLOT SCALE = 20.0000' / IN.  
 PLOT DATE = 10/16/2009

DESIGNED -  
 DRAWN -  
 CHECKED -  
 DATE -

REVISED -  
 REVISED -  
 REVISED -  
 REVISED -

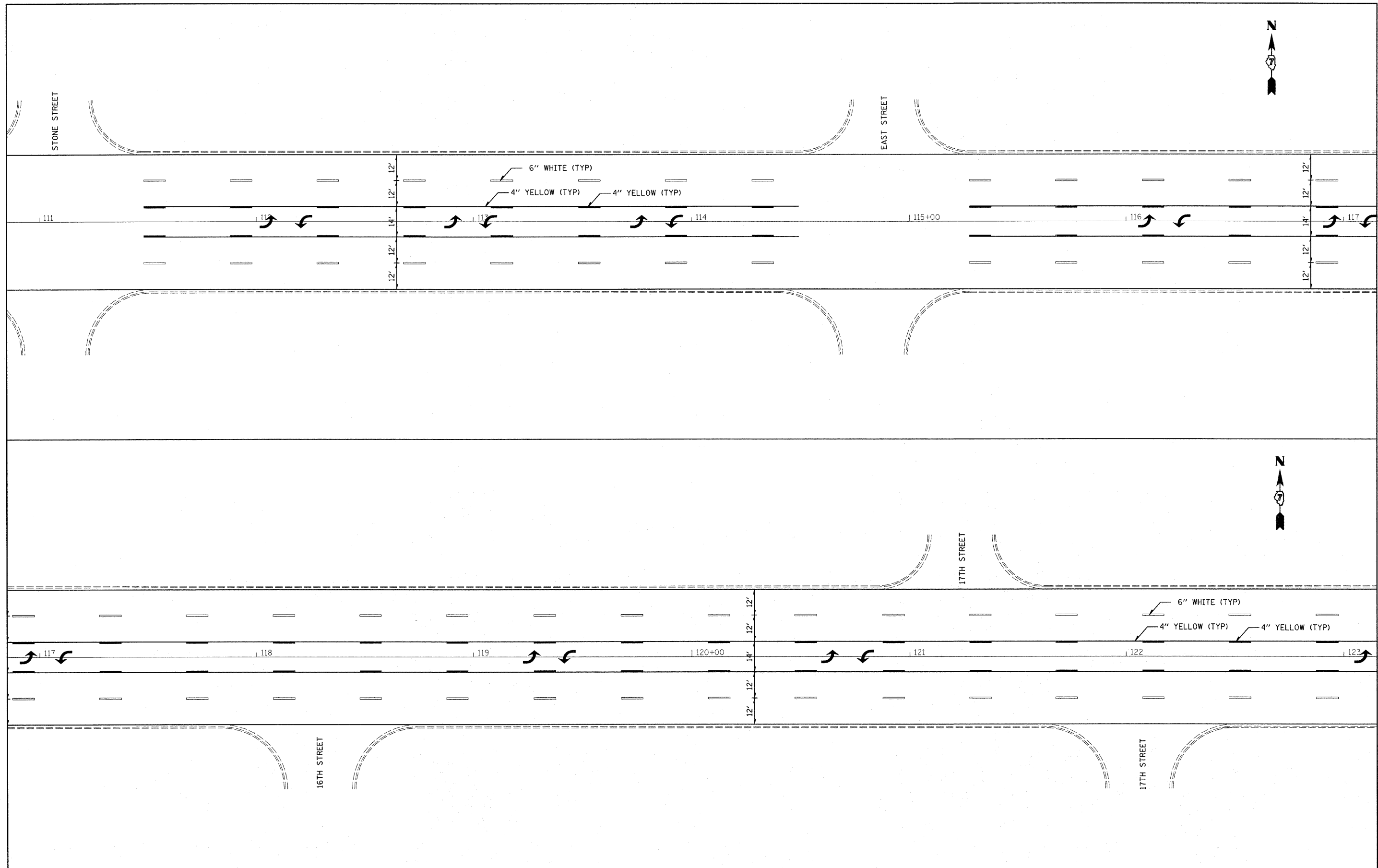
**STATE OF ILLINOIS  
 DEPARTMENT OF TRANSPORTATION**

**PLAN SHEETS  
 &  
 PAVEMENT MARKING PLANS**

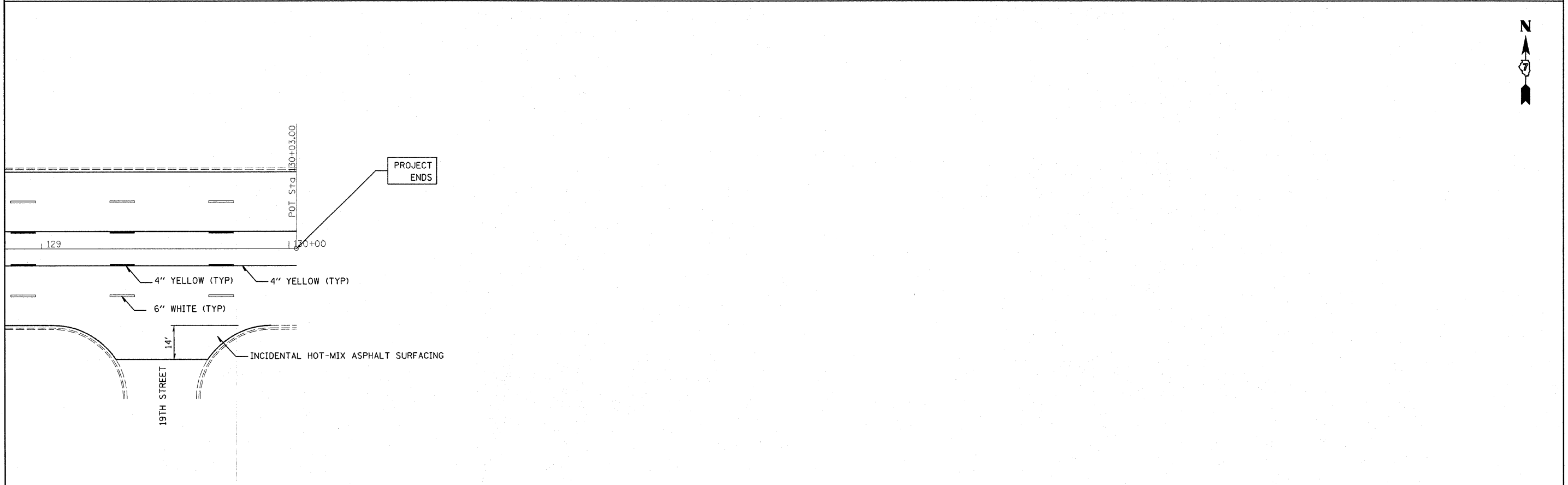
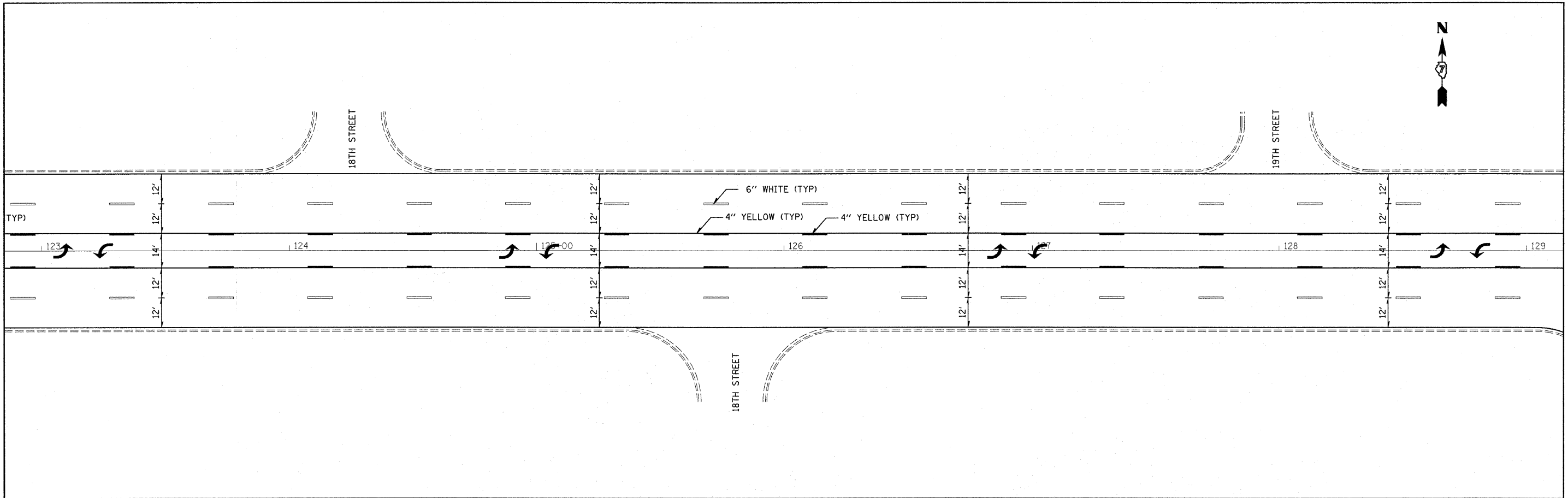
SCALE: SHEET NO. OF SHEETS STA. TO STA.

F.A.P. RTE.	SECTION	COUNTY	TOTAL SHEETS	SHEET NO.
323	(132-1,137)RS-3	Macon	12	8
CONTRACT NO. 74421			ILLINOIS FED. AID PROJECT	

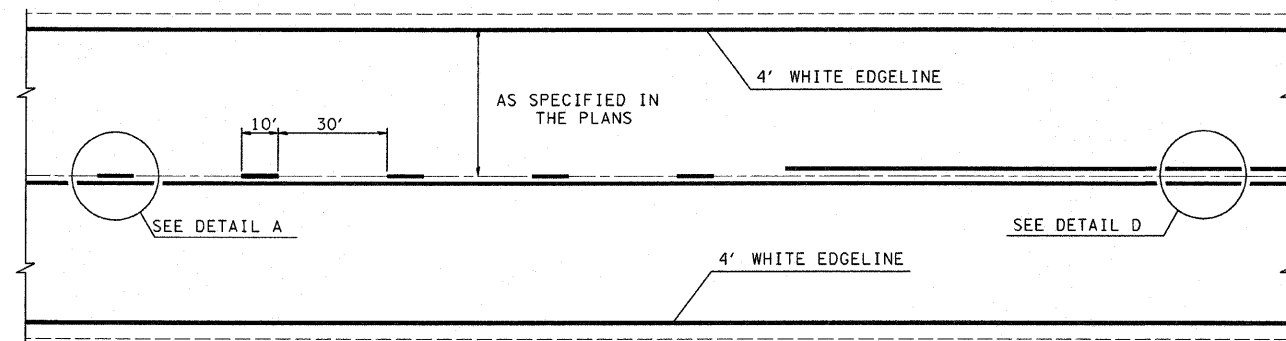




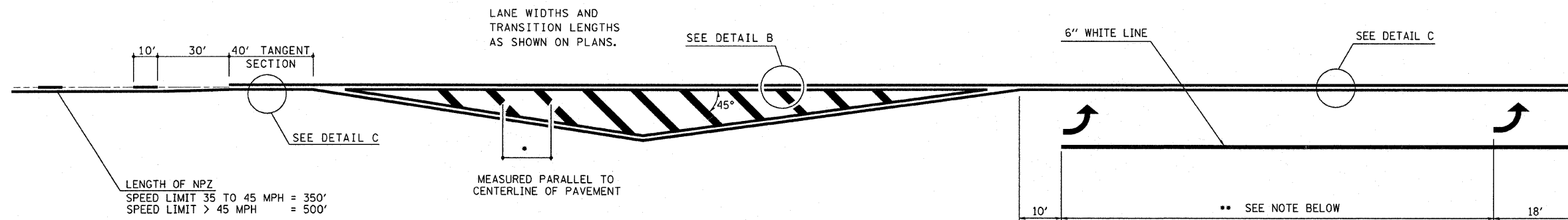
FILE NAME = c:\pw_work\pwsdot\teasleyck\d0155961\077	USER NAME = teasleyck	DESIGNED -	REVISED -	<b>STATE OF ILLINOIS DEPARTMENT OF TRANSPORTATION</b>	<b>PLAN SHEETS &amp; PAVEMENT MARKING PLANS</b>			F.A.P. RTE.	SECTION	COUNTY	TOTAL SHEETS	SHEET NO.
	4421-shrplan5.dgn	DRAWN -	REVISED -		323	(132-1,137Z)RS-3	Macon	12	9			
PLOT SCALE = 20,0000' / IN.	CHECKED -	REVISED -	REVISED -		SCALE:	SHEET NO. OF SHEETS	STA.	TO STA.	ILLINOIS FED. AID PROJECT			
PLOT DATE = 10/16/2009	DATE -	REVISED -	REVISED -		CONTRACT NO. 74421							



FILE NAME =	USER NAME = teasleyck	DESIGNED -	REVISED -	<b>STATE OF ILLINOIS DEPARTMENT OF TRANSPORTATION</b>	<b>PLAN SHEETS &amp; PAVEMENT MARKING PLANS</b>			F.A.P. RTE.	SECTION	COUNTY	TOTAL SHEETS	SHEET NO.			
ct:\pw_work\pwidot\teasleyck\d0155961\0779421-sht-plan5.dgn	PLOT SCALE = 20,0000 ' / IN.	DRAWN -	REVISED -		SCALE:	SHEET NO.	OF	SHEETS	STA.	TO STA.	323	(13Z-1,137Z)RS-3	Macon	12	10
PLOT DATE = 10/16/2009	DATE -	CHECKED -	REVISED -								CONTRACT NO. 74421				
		DATE -	REVISED -								ILLINOIS FED. AID PROJECT				



TYPICAL CENTERLINE, NO PASSING ZONE LINE (NPZ) & EDGELINE MARKINGS  
2-LANE PAVEMENT



LENGTH OF NPZ  
SPEED LIMIT 35 TO 45 MPH = 350'  
SPEED LIMIT > 45 MPH = 500'

LANE WIDTHS AND  
TRANSITION LENGTHS  
AS SHOWN ON PLANS.

MEASURED PARALLEL TO  
CENTERLINE OF PAVEMENT

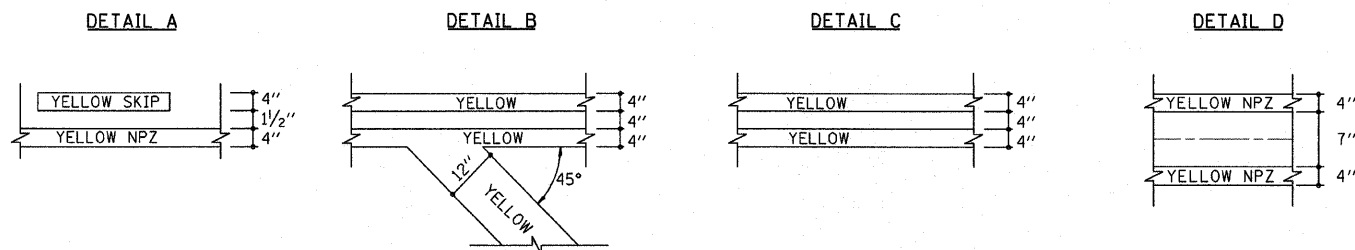
•DIAGONAL SPACING

SPEED LIMIT < 30 MPH = 15'  
SPEED LIMIT 30 TO 45 MPH = 20'  
SPEED LIMIT > 45 MPH = 30'

•• PLACE THE FIRST ARROW EVEN WITH THE BEGINNING OF THE TURN BAY.  
PLACE ANOTHER ARROW 18' BACK FROM THE STOP BAR. IF REQUIRED,  
ADD ADDITIONAL ARROWS TO MAINTAIN A MAXIMUM OF 80' SPACING.

NOTES:

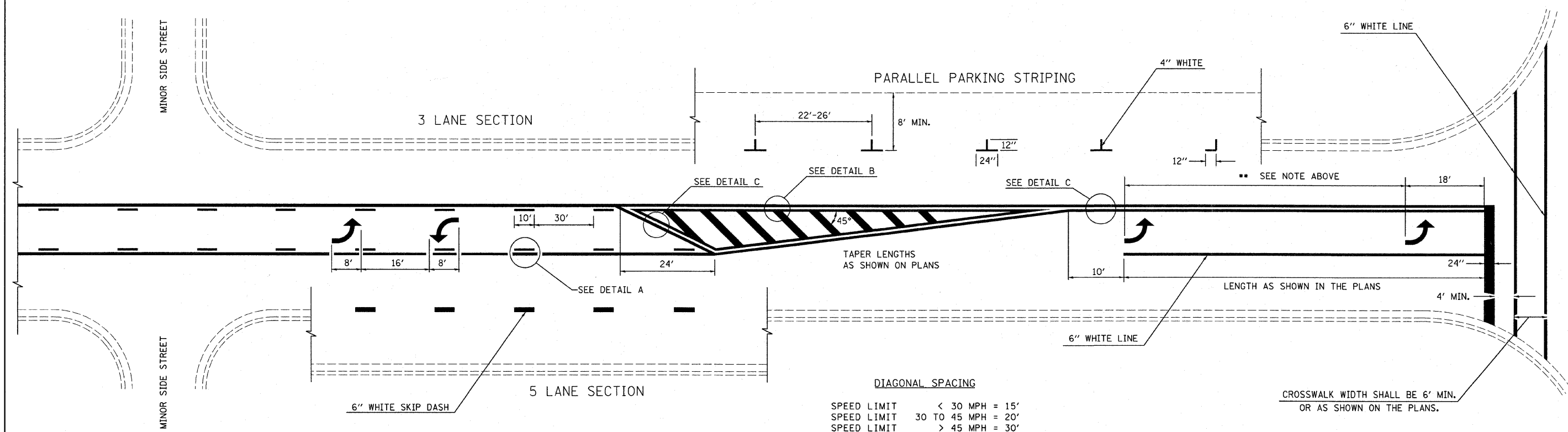
1. OMIT EDGELINE THRU SIDE ROADS.
2. TAPER RATES, LANE WIDTHS, AND STORAGE LENGTHS AS SHOWN ON THE PLANS.
3. WHEN MEDIANS ARE PRESENT, PLACE A SINGLE YELLOW STRIPE AROUND ITS PERIMETER.



NOT TO SCALE

FILE NAME =	USER NAME = teasleyck	DESIGNED -	REVISED - MMO 12-99	<b>STATE OF ILLINOIS DEPARTMENT OF TRANSPORTATION</b>	<b>TYPICAL APPLICATIONS OF PAVEMENT MARKINGS</b>			F.A.P. RTE.	SECTION	COUNTY	TOTAL SHEETS	SHEET NO.
ct:\pv_work\pwidot\teasleyck\d0155961\077	4421-sht-details.dgn	DRAWN -	REVISED - DRM 08-04		323	(132-1,137Z)RS-3	Macon	12	11			
	PLOT SCALE = 50,0000' / IN.	CHECKED -	REVISED - MKS 04-08		SHEET 1 OF 2			CONTRACT NO. 74421				
	PLOT DATE = 10/16/2009	DATE -	REVISED -		SCALE:	SHEET NO. OF SHEETS	STA. TO STA.	ILLINOIS FED. AID PROJECT				

•• PLACE THE FIRST ARROW EVEN WITH THE BEGINNING OF THE TURN BAY.  
 PLACE ANOTHER ARROW 18' BACK FROM THE STOP BAR, IF REQUIRED.  
 ADD ADDITIONAL ARROWS TO MAINTAIN A MAXIMUM OF 80' SPACING.



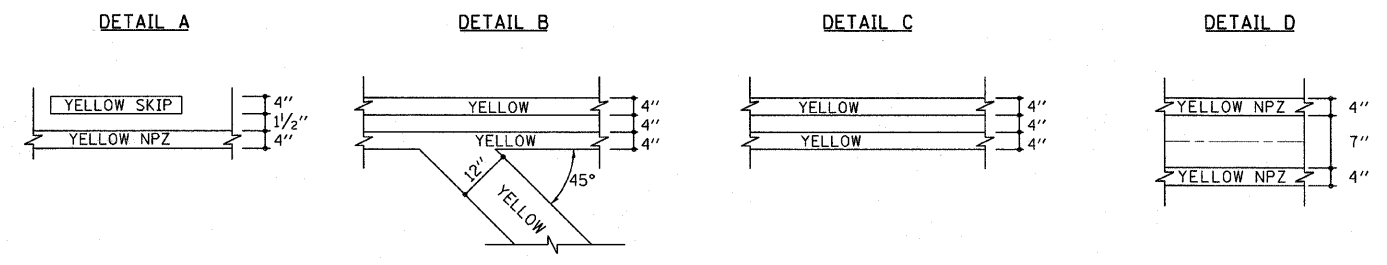
**DIAGONAL SPACING**

SPEED LIMIT	< 30 MPH	= 15'
SPEED LIMIT	30 TO 45 MPH	= 20'
SPEED LIMIT	> 45 MPH	= 30'

CROSSWALK WIDTH SHALL BE 6' MIN.  
 OR AS SHOWN ON THE PLANS.

**TYPICAL BI-DIRECTIONAL TURN LANE MARKINGS**  
 (SHOWING TRANSITION TO EXCLUSIVE LEFT TURN LANE)

- NOTE:**
1. NO LESS THAN 2 ARROWS SHALL BE USED.
  2. TAPER RATES, LANE WIDTHS, AND STORAGE LENGTHS AS SHOWN ON THE PLANS.
  3. AVOID PLACING BI-DIRECTIONAL ARROWS IN INTERSECTIONS.
  4. BI-DIRECTIONAL ARROWS SHALL BE SPACED A MAXIMUM OF 250'.



NOT TO SCALE

FILE NAME =	USER NAME = teasleyck	DESIGNED -	REVISED - MMO 12-99	<b>STATE OF ILLINOIS DEPARTMENT OF TRANSPORTATION</b>	<b>TYPICAL APPLICATIONS OF PAVEMENT MARKINGS</b>		F.A.P. RTE.	SECTION	COUNTY	TOTAL SHEETS	SHEET NO.			
es:\pv_work\pwwdot\teasleyck\d0155961\077#21-sht-details.dgn	PLOT SCALE = 50.0000' / IN.	DRAWN -	REVISED - DRM 08-04		SCALE:	SHEET NO.	OF SHEETS	STA.	TO STA.	323	(132-1,137)RS-3	Macon	12	12
PLOT DATE = 10/16/2009	DATE -	CHECKED -	REVISED - MKS 04-08									CONTRACT NO.	74421	
		DATE -	REVISED -									ILLINOIS FED. AID PROJECT		