

TYPICAL NORMAL SECTION

LEGEND

- ① EXISTING CRPCC PAVEMENT - 10"
- ② EXISTING STABILIZED SUB-BASE - 4"
- ③ EXISTING PIPE UNDERDRAINS
- ④ EXISTING HOT-MIX ASPHALT SHOULDERS - 10"
- ⑤ EXISTING AGGREGATE SHOULDERS, TYPE B
- ⑥ EXISTING GUARDRAIL
- ⑦ PROPOSED POLYMERIZED HOT-MIX ASPHALT SURFACE COURSE, MIX "E", N105, 2"
- ⑧ PROPOSED BITUMINOUS MATERIALS - PRIME COAT
- ⑨ PROPOSED AGGREGATE PRIME COAT
- ⑩ PROPOSED HOT-MIX ASPHALT SHOULDERS - 2"

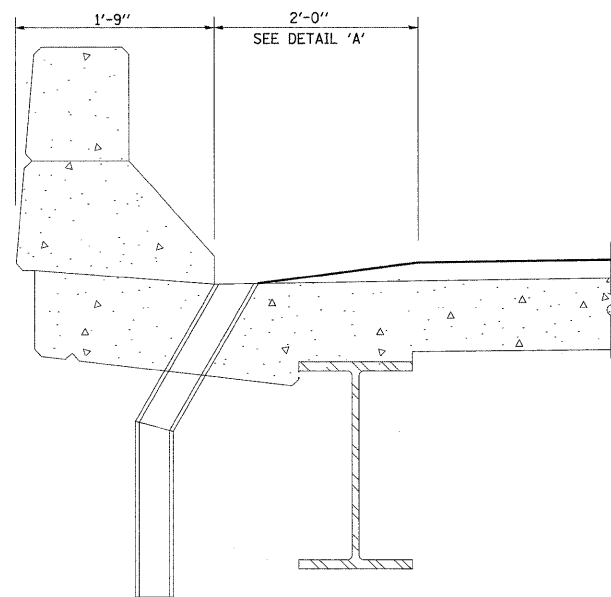
I-255 (NB) STA. 1165+00.00 TO STA. 1190+00.00
 I-255 (SB) STA. 1165+00.00 TO STA. 1190+00.00

MIXTURE REQUIREMENTS

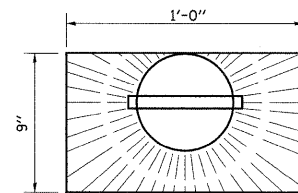
| MIXTURE USE | POLY SURFACE | SHOULDERS |
|--|------------------|----------------|
| AC/PG | SBS PG 76-22 | PG 64-22 |
| RAP % (MAX) | 10% | 30% |
| DESIGN AIR VOIDS | 4.0% @ Ndes= 105 | 2.0% @ Ndes=30 |
| MIX COMPOSITION (GRADATION MIXTURE) | | |
| FRICITION AGG | MIXTURE "E" | BAM |

TOP LIFT SHOULDERS - DESIGN THIS MIX AT 2.0% VOIDS AND ADD ASPHALT TO REDUCE VOIDS TO 1.5%

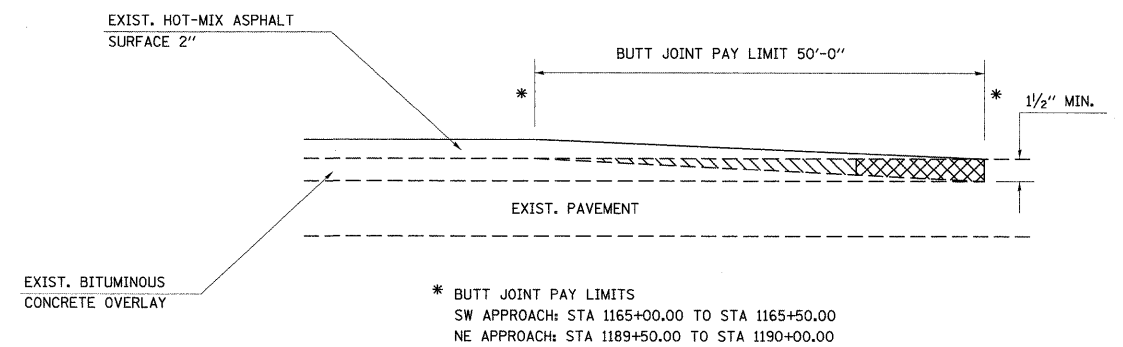
PLAN QUANTITIES FOR HOT-MIX ASPHALT SURFACE COURSE ITEMS ARE CALCULATED USING A UNIT WEIGHT OF 112 LB/SQ YD/IN (59.8 KG/SQ M/25 MM THICKNESS).



SECTION AT DRAIN



DETAIL 'A' PLAN VIEW DECK DRAIN



BUTT JOINT DETAIL