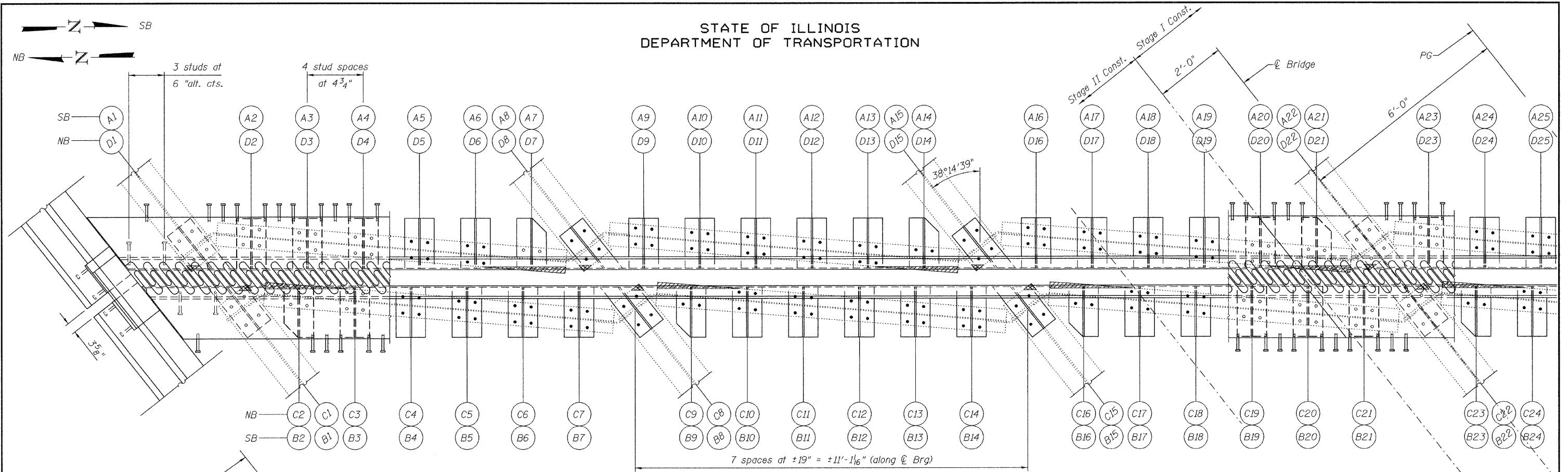
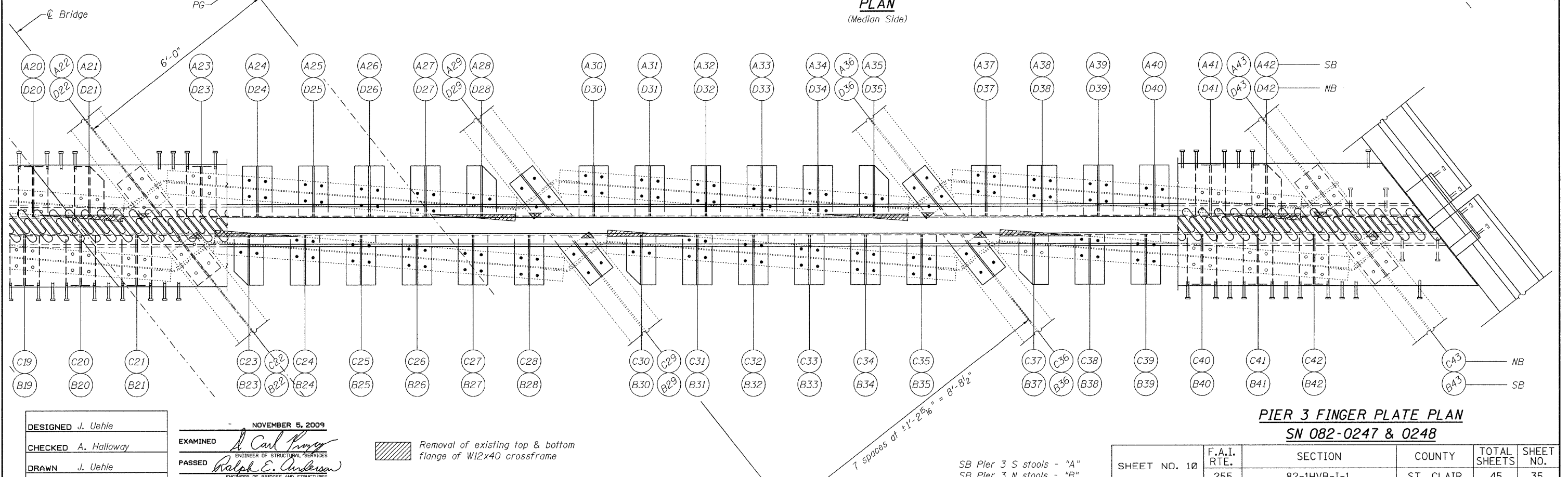


STATE OF ILLINOIS  
DEPARTMENT OF TRANSPORTATION



**PLAN**  
(Median Side)



**PLAN**  
(Outer Side)

**PIER 3 FINGER PLATE PLAN**  
**SN 082-0247 & 0248**

DESIGNED J. Uehle  
CHECKED A. Hallway  
DRAWN J. Uehle  
CHECKED A. Hallway

NOVEMBER 5, 2009  
EXAMINED *Carl P. ...*  
PASSED *Ralph E. Anderson*  
ENGINEER OF STRUCTURAL SERVICES  
ENGINEER OF BRIDGES AND STRUCTURES

- Removal of existing top & bottom flange of W12x40 crossframe
- Removal of corner of existing top flange of plate girder

- SB Pier 3 S stools - "A"
- SB Pier 3 N stools - "B"
- NB Pier 3 S stools - "C"
- NB Pier 3 N stools - "D"

SHEET NO. 10 20 SHEETS	F.A.I. RTE.	SECTION	COUNTY	TOTAL SHEETS	SHEET NO.
	255	82-1HVB-I-1	ST. CLAIR	45	35
			CONTRACT NO. 76926		
FED. ROAD DIST. NO.		ILLINOIS FED. AID PROJECT			