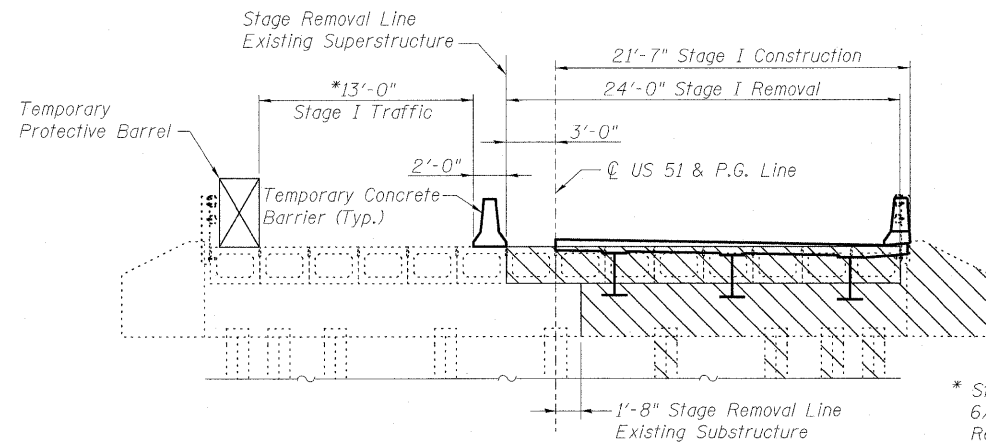
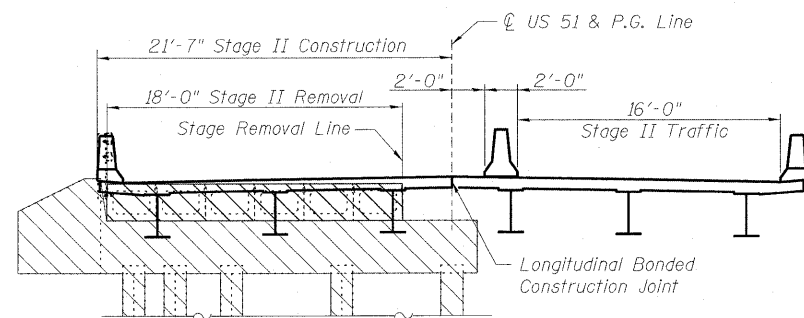


STATE OF ILLINOIS  
DEPARTMENT OF TRANSPORTATION



**STAGE I CONSTRUCTION**  
(Looking South)



**STAGE II CONSTRUCTION**  
(Looking South)

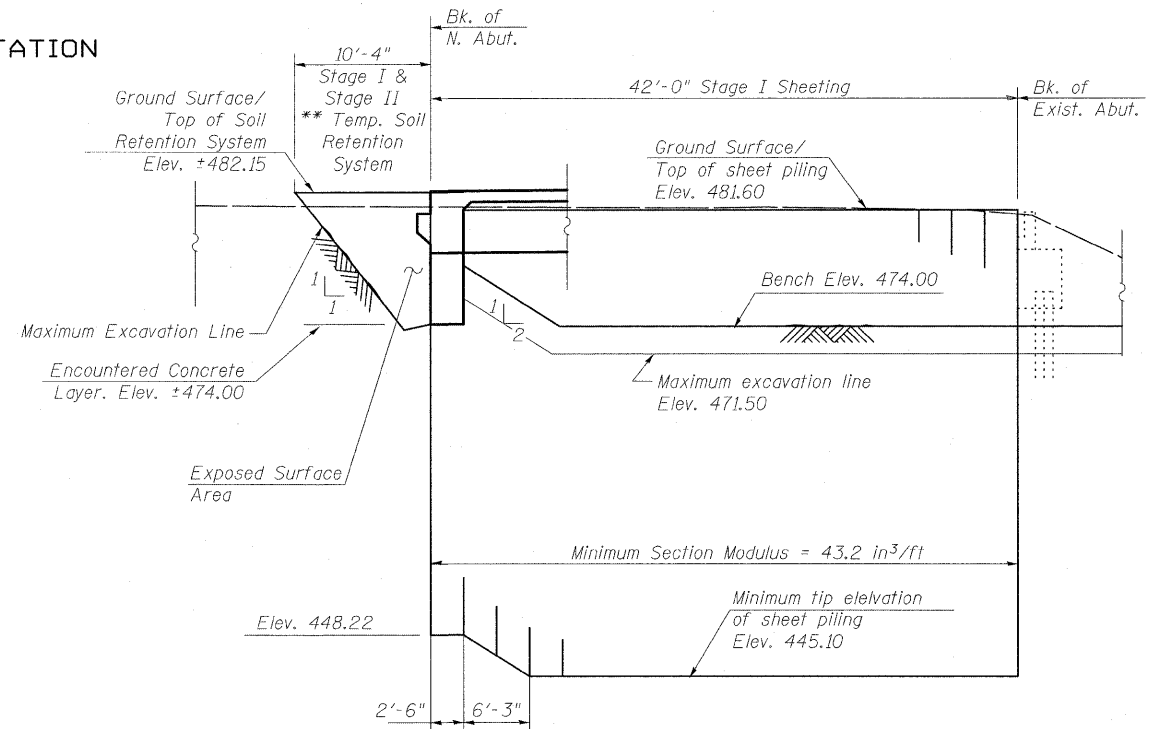
Note:  
The contractor is advised that the existing PPC deck beams are in a deteriorated condition with reduced load carrying capacity. It is the contractor's responsibility to account for the condition of the beams when developing construction procedures for removal and replacement of structures.

If the Contractor chooses to alter the temporary cantilevered sheet piling design requirements shown on the plans, a design submittal including plan details and calculations will be required for review and acceptance by the Engineer.

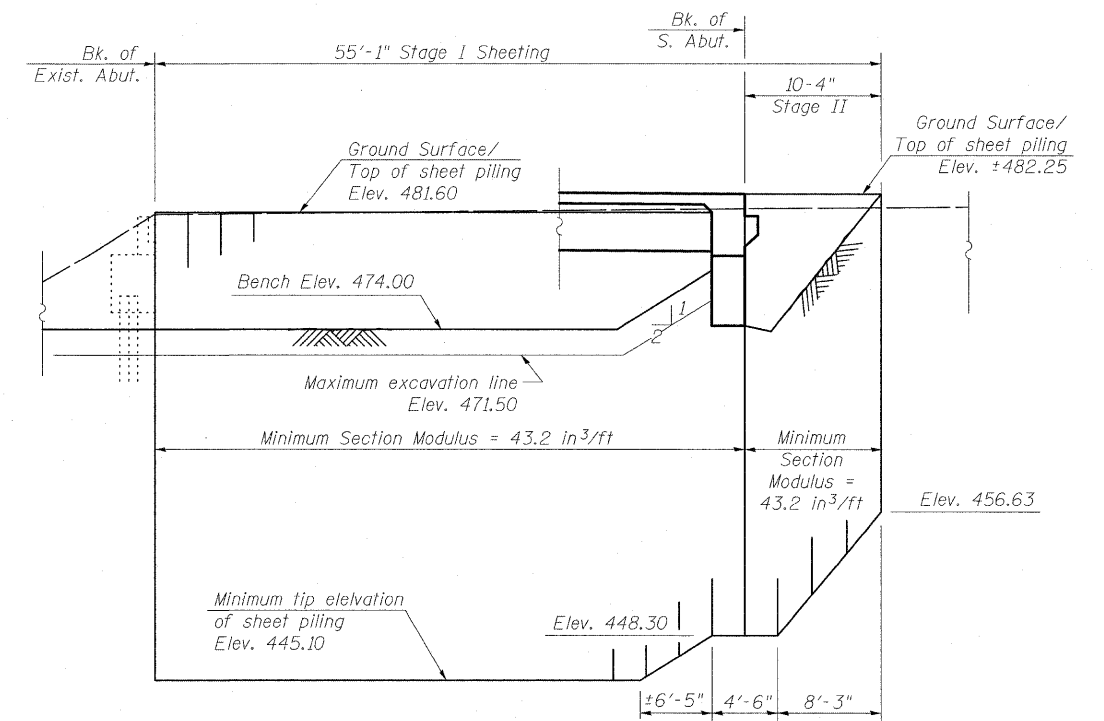
A cantilevered sheet piling design does not appear feasible and additional members or other retention systems may be necessary. The Contractor shall submit a temporary soil retention system design including plan details and calculations for review and acceptance by the Engineer.

\*\* Buried concrete was encountered at the location of the existing North Abutment approximately 8'-0" below the existing grade. The limits of the Stage I Soil Retention System and Sheet Piling may vary in final construction.

DESIGNED	B.B.
CHECKED	C.J.F.
DRAWN	W.J.S.
CHECKED	C.J.F. & B.B.



**NORTH ABUTMENT**



**SOUTH ABUTMENT**

**SHEET PILING ELEVATION**

**STAGE CONSTRUCTION AND SHEET PILING DETAILS  
STRUCTURE NUMBER 061-0094**

**BILL OF MATERIAL**

ITEM	UNIT	TOTAL
Temporary Sheet Piling	Sq. Ft.	3448
Temporary Soil Retention System	Sq. Ft.	84



**BERNARDIN  
LOCHMUELLER &  
ASSOCIATES, INC.**

3 Oak Drive  
Maryville, IL 62962-9635  
Local: 618-288-4955  
Fax: 618-288-4996

SHEET NO. 3 23 SHEETS	F.A.P. RTE. 322	SECTION 25BR-1	COUNTY MARION	TOTAL SHEETS 63	SHEET NO. 26
	SN 061-0094		CONTRACT NO. 76A83		
FED. ROAD DIST. NO. 8 ILLINOIS FED. AID PROJECT 322					