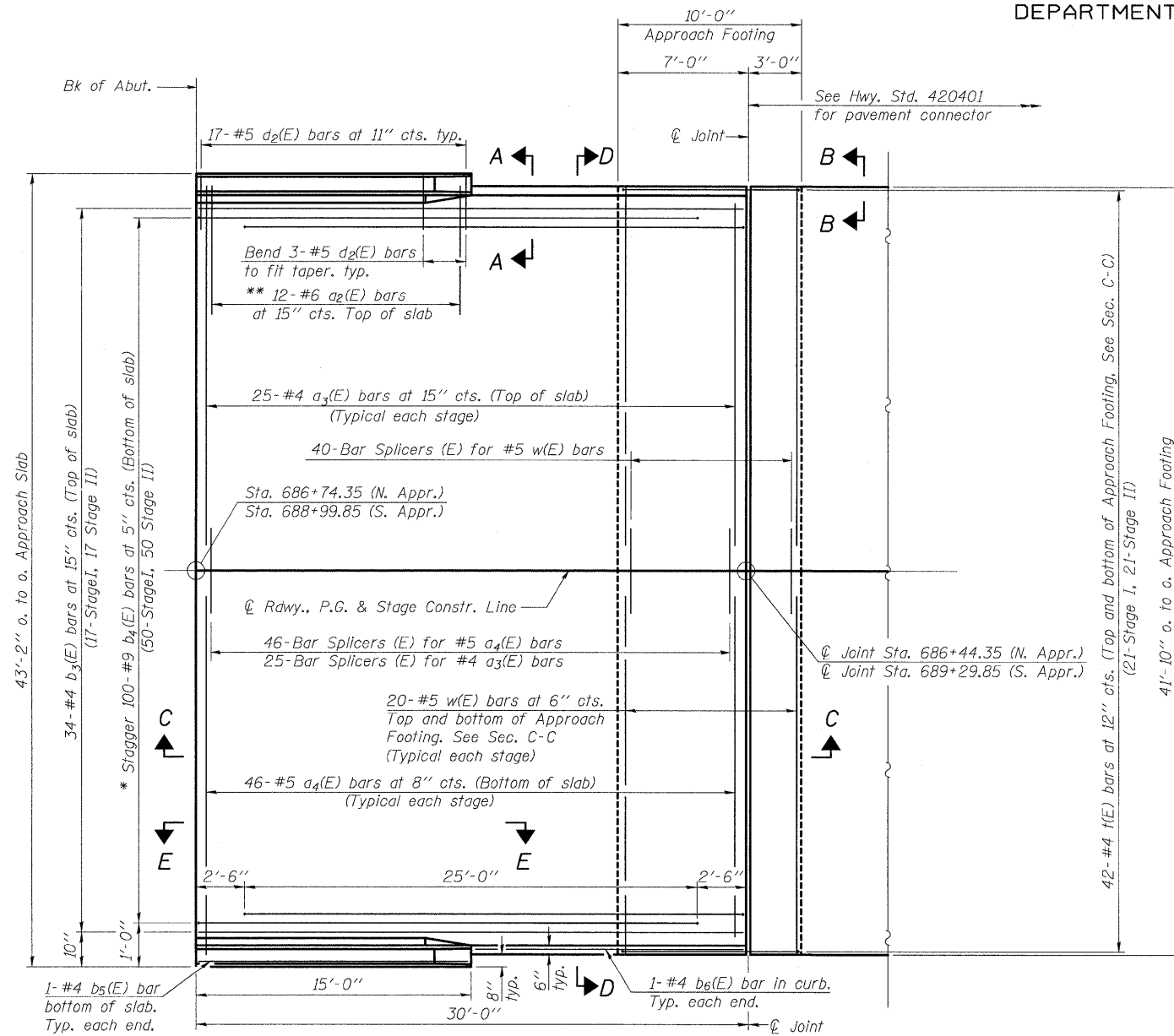


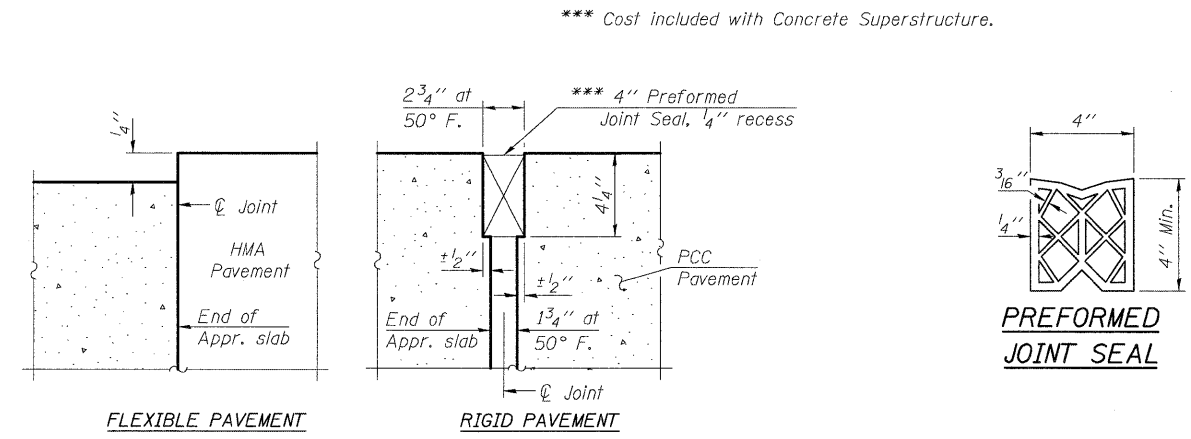
STATE OF ILLINOIS
DEPARTMENT OF TRANSPORTATION

Notes:
See sheet 13 of 23 for Sections C-C & D-D and View E-E.
a₃(E), a₄(E), and w(E) bar spacings measured parallel to ϕ Rdwy.

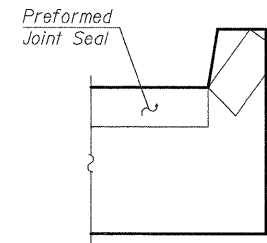


PLAN

* Tilt #9 b₄(E) bars as required to maintain clearance.
 ** Alternate with a₃(E) bars, typ. ea. parapet.

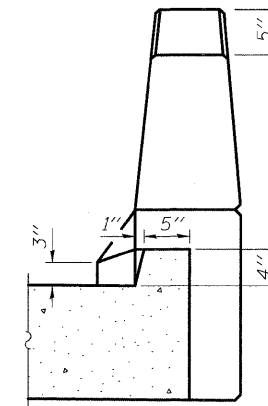


DETAIL A



VIEW B-B

Angle Preformed Joint Seal at 45° at curbs when req'd for drainage.



VIEW A-A

DESIGNED	B.B.
CHECKED	C.J.F.
DRAWN	W.J.S.
CHECKED	C.J.F. & B.B.

BRIDGE APPROACH SLAB DETAILS
STRUCTURE NUMBER 061-0094



BERNARDIN
LOCHMUELLER &
ASSOCIATES, INC.

3 Oak Drive
Mareville, IL 62963-5636
Local (618) 298-4666
Fax 618-298-4666

SHEET NO. 12 23 SHEETS	F.A.P. RTE. 322	SECTION 25BR-1	COUNTY MARION	TOTAL SHEETS 63	SHEET NO. 35
	SN 061-0094		CONTRACT NO. 76A83		
FED. ROAD DIST. NO. 8 ILLINOIS FED. AID PROJECT 322					