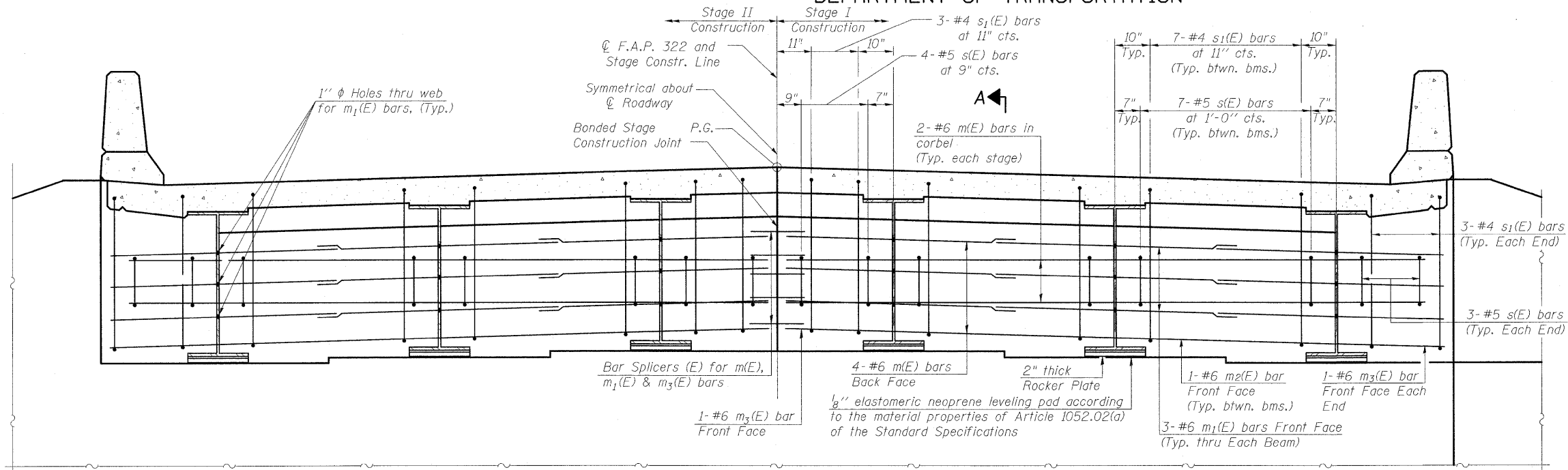


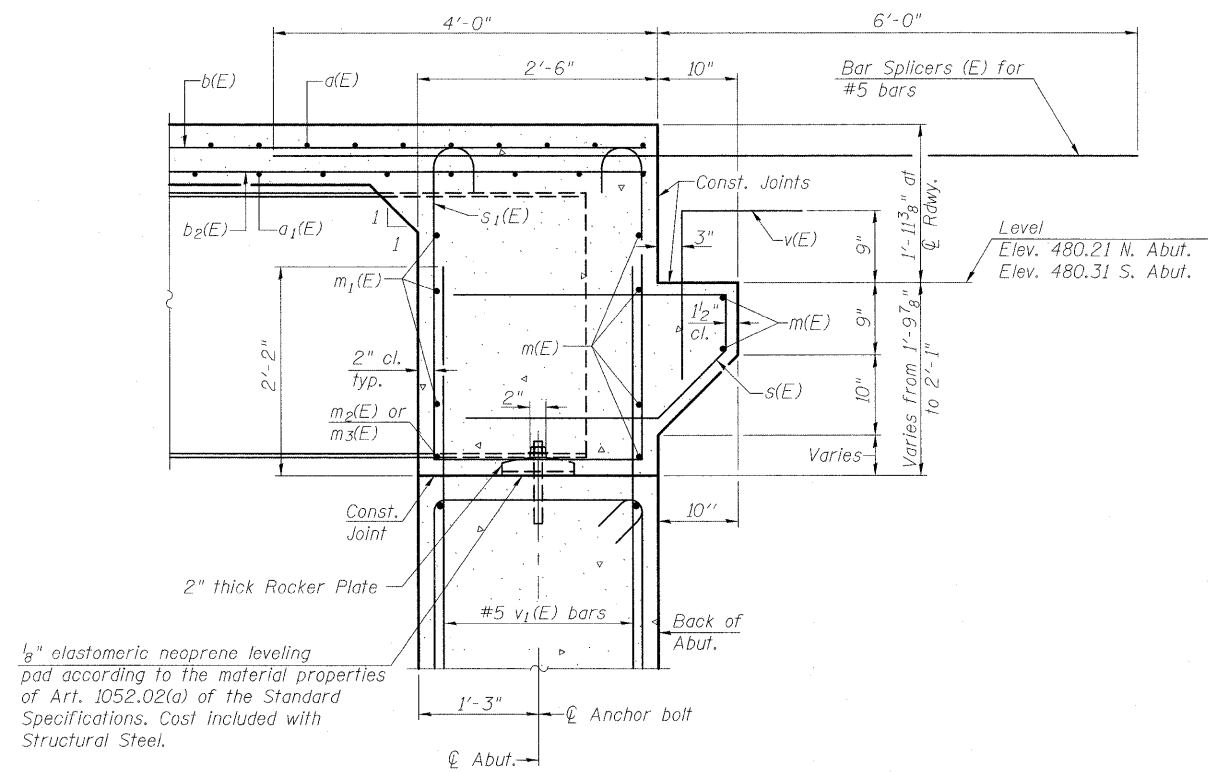
STATE OF ILLINOIS
DEPARTMENT OF TRANSPORTATION



DIAPHRAGM ELEVATION AT ABUTMENT
(Looking South)

Notes:
Reinforcement bars in diaphragm are billed with superstructure on sheet 11 of 23.
Concrete in diaphragm is included with Concrete Superstructure on sheet 11 of 23.
For details of bars s(E) & s₁(E) see sheet 11 of 23.
The s(E) and s₁(E) bars shall be placed parallel to the beams. Spacing for these bars shall be at right angles to the beams.

MIN. BAR LAP
#6 bar = 2'-9"



SECTION A-A

Dimensions at right angles to abutment, except as shown.



**BERNARDIN
LOCHMUELLER &
ASSOCIATES, INC.**

3 Oak Drive
Maryville, IL 62902-5635
Local (618) 288-4665
Fax 618-288-4666

DIAPHRAGM DETAILS
STRUCTURE NUMBER 061-0094

DESIGNED	B.B.
CHECKED	C.J.F.
DRAWN	W.J.S.
CHECKED	C.J.F. & B.B.

SHEET NO. 14	F.A.P. RTE.	SECTION	COUNTY	TOTAL SHEETS	SHEET NO.
	322	25BR-1	MARION	43	37
23 SHEETS	SN 061-0094		CONTRACT NO. 76A83		
FED. ROAD DIST. NO. 8 ILLINOIS FED. AID PROJECT 322					