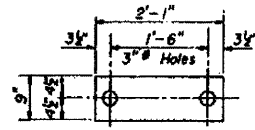
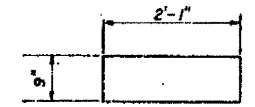


STATE OF ILLINOIS
DEPARTMENT OF TRANSPORTATION

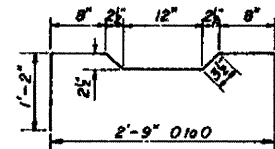
ROUTE NO.	SECTION	SHEET	TOTAL SHEETS	SHEET NO.
258R	Marion	11	5	8



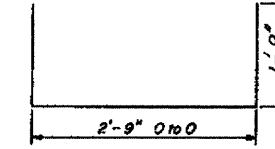
FABRIC BEARING PAD



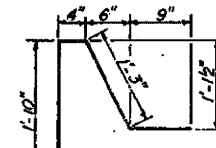
GRAPHITED ASBESTOS BEARING PAD



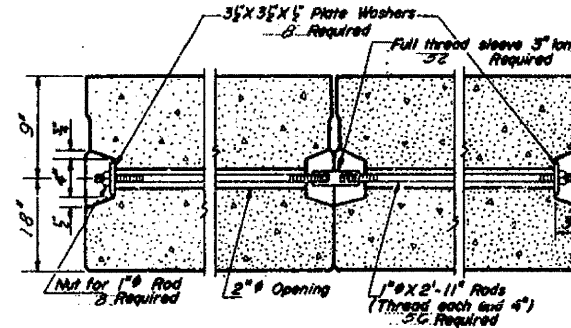
A1 BAR



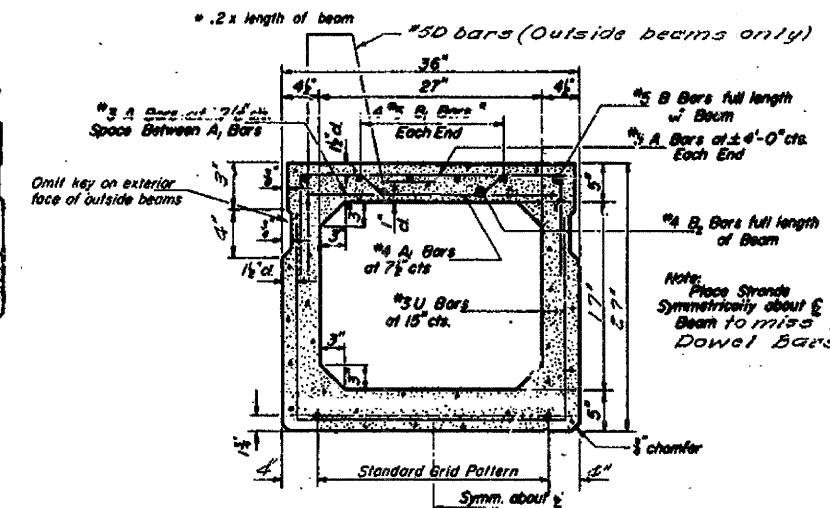
U.B.U. BAR



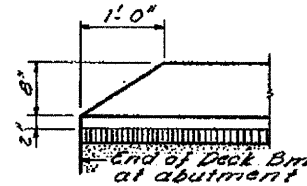
D BAR



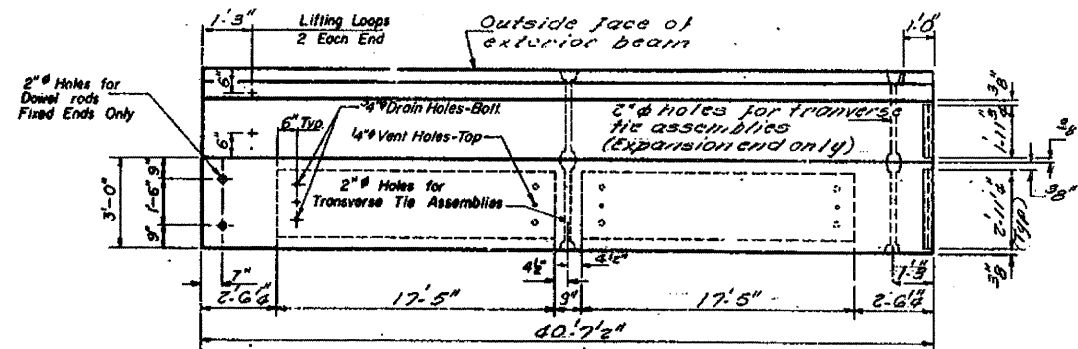
TYPICAL TRANSVERSE TIE ASSEMBLY



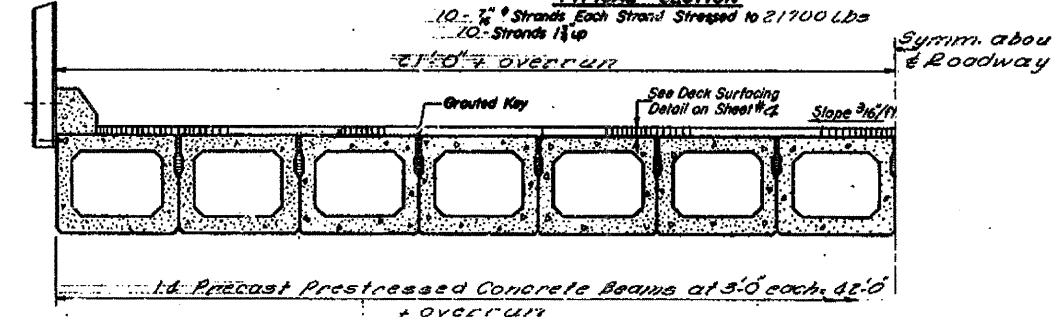
TYPICAL SECTION



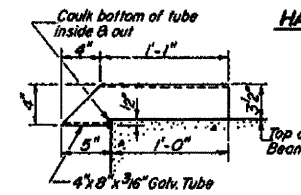
END OF CURB



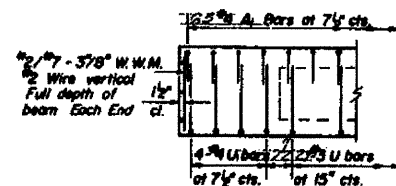
PLAN



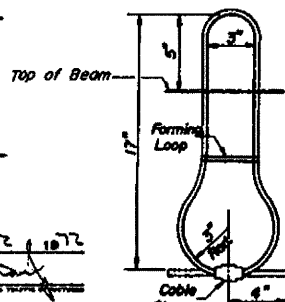
HALF CROSS SECTION



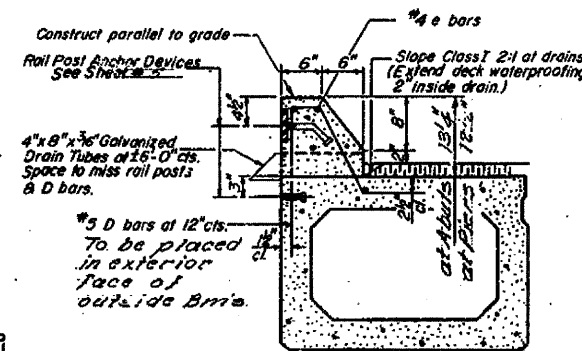
DRAIN DETAIL



END ELEVATION



LIFTING LOOP DETAIL



SECTION THRU CURB

GENERAL NOTES
Prestressing steel shall be non-galvanized high strength, stress-relieved 7-wire strand. The nominal diameter shall be 7/8" and the nominal cross-sectional area shall be 0.115 sq. in. Lifting loops shall be 1/2" diameter, 6 x 19 class wire rope with fiber core and shall have a minimum ultimate tensile strength of 220,000 lbs. The 1" rods in the transverse tie assembly shall be tightened to a snug fit and the threads set. Pockets that receive transverse tie bar on outside beam shall be filled with grout after transverse tie assembly is in place. Longitudinal shear keys shall be packed with a very dry mix of 2:1 sand and P.C. mortar. After beams have been erected, holes for the dowel anchors shall be drilled into the sub-structure and the anchor dowels shall be grouted in place. Dowel rods shall be ASTM A-306 or ASTM A-615. Transverse tie rods shall be ASTM A-306, Grade 70-80. After fabrication the transverse tie assemblies (tie rods, nuts, washers and sleeves) shall be hot-dipped galvanized in accordance with A.S.T.M. Designation: A153. Cost of reinforcement and accessories cast into the beam, of bearing girds, of armor angles, and of grouting longitudinal shear keys is included in unit price bid for "Precast Prestressed Concrete Deck Beams, (27)".

Note
Work this sheet
with sheet #4

BILL OF MATERIAL

Bar	No.	Size	Length	Shape
Precast Prestressed Concrete Deck Beams (27')		Sq Ft.	5415	

SPANS 11.3
SUPERSTRUCTURE
KA RT 2 SEC 258R
MARION COUNTY
STATION 687+90

W-5R-4 (11-16-71)

FILE NAME	USER NAME	DESIGNED	REVISIONS	STATE OF ILLINOIS DEPARTMENT OF TRANSPORTATION	EXISTING STRUCTURE PLANS FOR INFORMATION ONLY	F.A.M. RTE. 322	SECTION 258R-1	COUNTY MARION	TOTAL SHEETS 63	SHEET NO. 48
DESIGNED: [Signature]	EXAMINED: [Signature]	DRAWN: [Signature]	CHECKED: [Signature]	SCALE: [Blank]	SHEET NO. 2 OF 7 SHEETS	STA. [Blank]	TO STA. [Blank]	ILLINOIS FED. AID PROJECT	CONTRACT NO. T68B3	