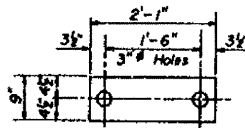
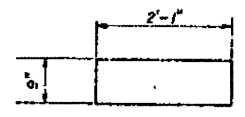


STATE OF ILLINOIS
DEPARTMENT OF TRANSPORTATION

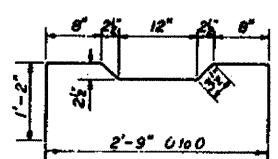
PROJECT NO.	SECTION	COUNTY	TOTAL SHEETS	SHEET NO.
258R	Marion	11	6	8



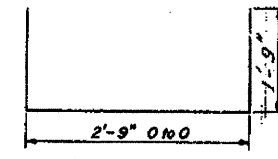
FABRIC BEARING PAD



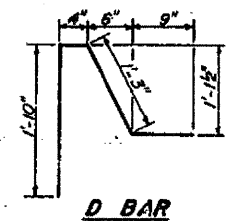
GRAPHITED ASBESTOS BEARING PAD



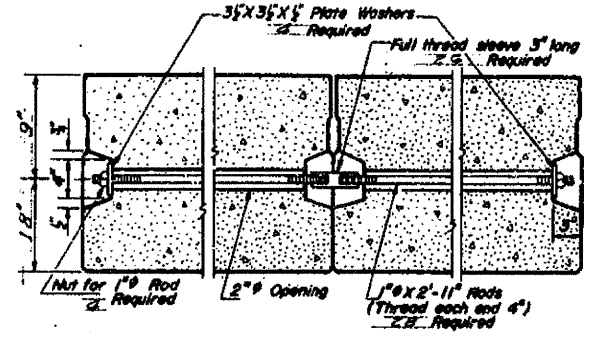
A1 BAR



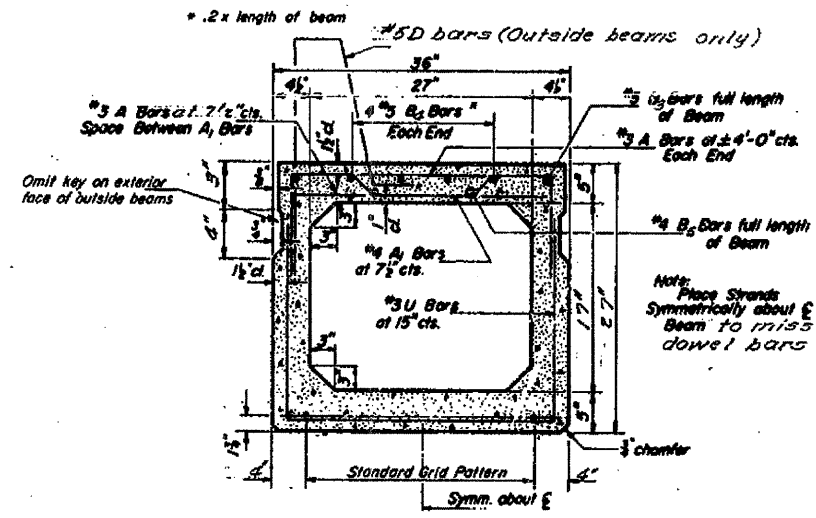
U.B.U. BAR



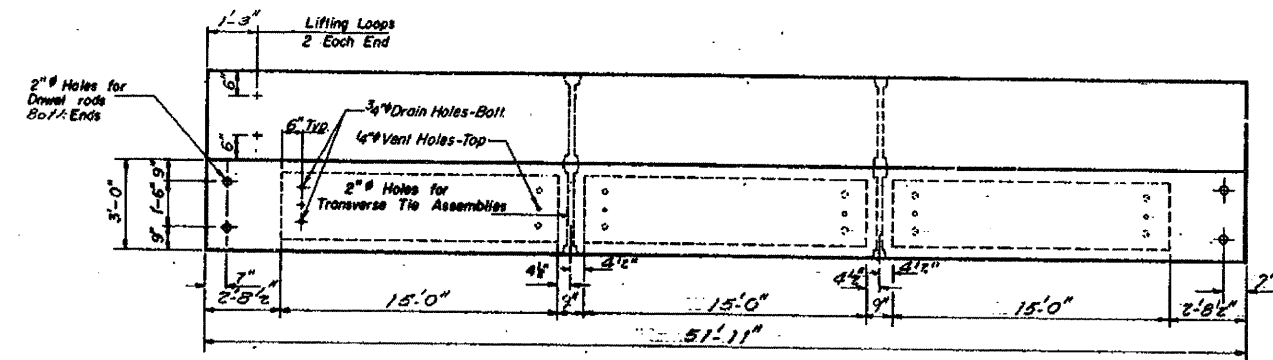
D BAR



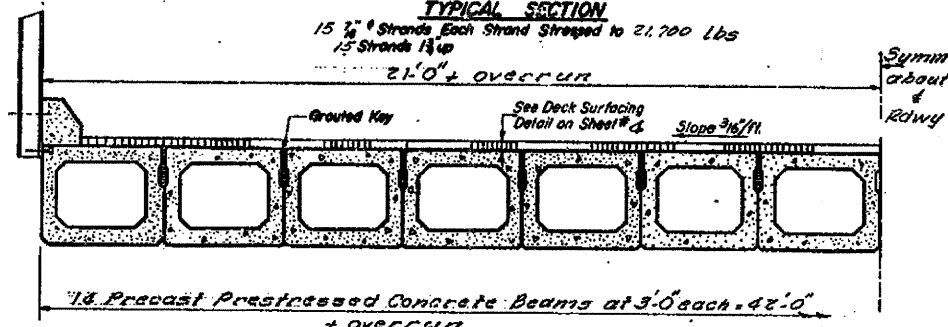
TYPICAL TRANSVERSE TIE ASSEMBLY



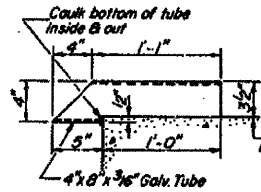
TYPICAL SECTION



PLAN

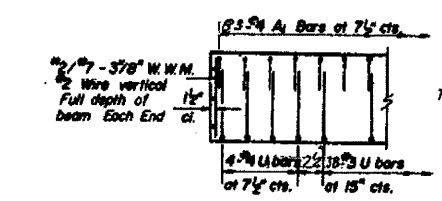


HALF CROSS SECTION

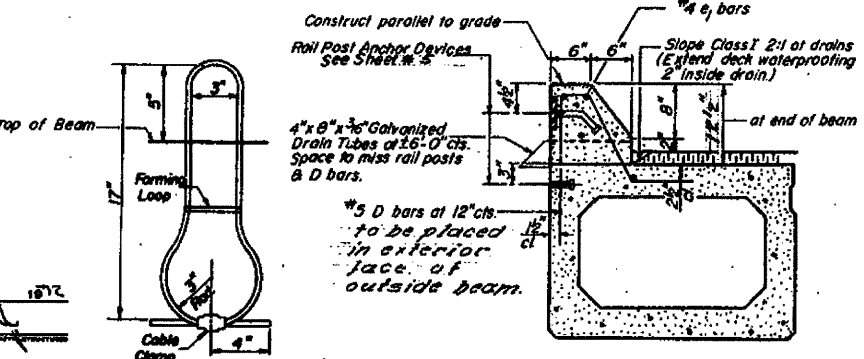


DRAIN DETAIL

Note
Work this sheet with
sheet #4



END ELEVATION



SECTION THRU CURB
Curbs shall be poured in the field.
Class X Concrete & e bars for curbs are billed on Sheet #2.

GENERAL NOTES
Prestressing steel shall be non-galvanized high strength, stress-relieved 7-wire strand. The nominal diameter shall be 3/8" and the nominal cross-sectional area shall be 0.715 sq. in.. Lifting loops shall be 5/8" diameter, 6 x 19 class wire rope with fiber core and shall have a minimum ultimate tensile strength of 230,000 lbs.
The 1" rods in the transverse tie assembly shall be tightened to a snug fit and the threads set. Pockets that receive transverse tie bar on outside beam shall be filled with grout after transverse tie assembly is in place.
Longitudinal shear keys shall be packed with a very dry mix of 2:1 sand and P.C. mortar. After beams have been erected, holes for the dowel anchors shall be drilled into the sub-structure and the anchor dowels shall be grouted in place.
Dowel rods shall be ASTM A-306 or ASTM A-615. Transverse tie rods shall be ASTM A-306, Grade 70-80.
After fabrication the transverse tie assemblies (tie rods, nuts, washers and sleeves) shall be hot-dipped galvanized in accordance with A.S.T.M. Designation: A153.
Cost of reinforcement and accessories cast into the beam, of bearing pads, of armor angles, and of grouting longitudinal shear keys is included in unit price bid for "Precast Prestressed Concrete Deck Beams (27)".

BILL OF MATERIAL

Bar	No.	Size	Length	Shape
Precast Prestressed Concrete Deck Beams (27)		Sq. Ft.	2181	

DESIGNED: [Signature]
CHECKED: John A. Morris
DRAWN: [Signature]
CHECKED: J.M.

EXAMINED: [Signature]
PASSED: [Signature]
APPROVED: [Signature]

LIFTING LOOP DETAIL

SPAN 2
SUPERSTRUCTURE
K.A. R.L. SEC. 258R
MARION COUNTY
STATION 627+90

W-SR-4 (11-15-71)

FILE NAME =	USER NAME = #USER#	DESIGNED -	REVISED -	STATE OF ILLINOIS	EXISTING STRUCTURE PLANS	F.A.M. R.T.E.	SECTION	COUNTY	TOTAL SHEETS	SHEET NO.
#FILE#		DRAWN -	REVISED -	DEPARTMENT OF TRANSPORTATION	FOR INFORMATION ONLY	322	258R-1	MARION	63	49
	PLOT SCALE = #SCALE#	CHECKED -	REVISED -							
	PLOT DATE = #DATE#	DATE -	REVISED -			SCALE:	SHEET NO. 3 OF 7 SHEETS	STA.	TO STA.	CONTRACT NO. 76883
										ILLINOIS FED. AID PROJECT