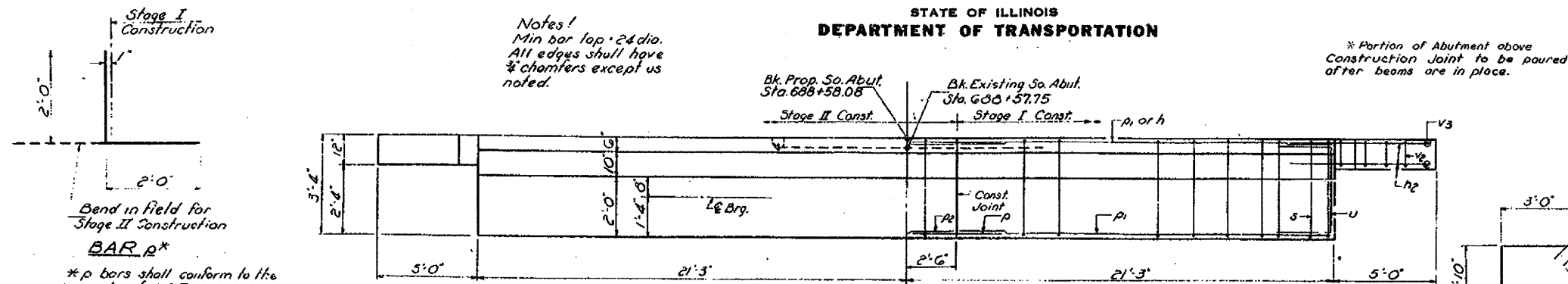
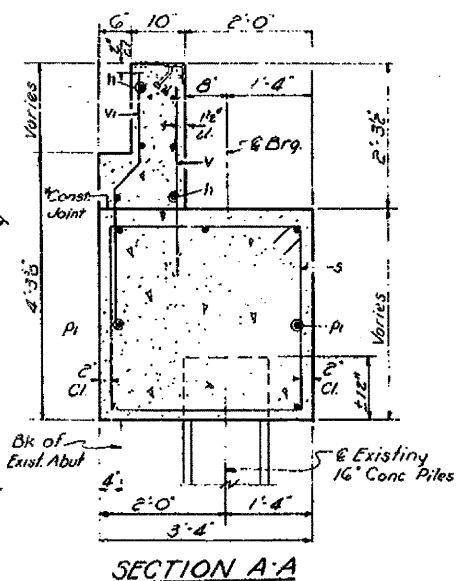
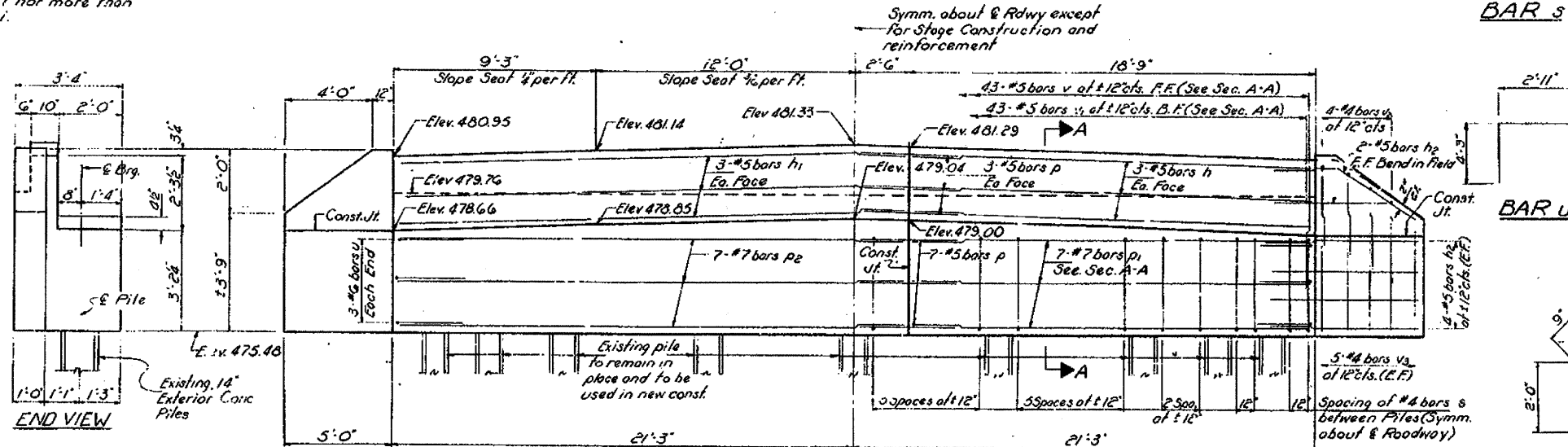


STATE OF ILLINOIS  
DEPARTMENT OF TRANSPORTATION

ROUTE NO.	SECTION	COUNTY	SHEET NO.	SHEET NO. OF SHEETS
25BR	Marion	11	9	8 SHEETS



**BAR p\***  
\*p bars shall conform to the requirements of A.S.T.M. A-G15 or A-G17, except the minimum yield strength shall not be less than 33,000 p.s.i. nor more than 45,000 p.s.i.



**ONE ABUTMENT BILL OF MATERIAL**

Bar	No	Size	Length	Shape
h	6	#5	18'-6"	—
pi	6	#5	23'-6"	—
he	24	#5	7'-0"	—
p	13	#5	4'-0"	—
pi	7	#7	18'-6"	—
pe	7	#7	23'-6"	—
s	36	#4	12'-5"	□
u	6	#6	11'-5"	□
v	25	#5	4'-3"	—
ve	25	#5	4'-3"	—
vs	8	#4	7'-3"	□
vs	20	#4	3'-6"	—
Class X Concrete			Cu. Yds.	227
Reinforcement Bars			Lbs.	1980
Concrete Removal			Cu. Yds.	15

DESIGNED: *Charles P. Dean*  
CHECKED: *John A. Morris*  
DRAWN: *W.E.D.*  
CHECKED: *gm*

EXAMINED: *[Signature]*  
PASSED: \_\_\_\_\_  
APPROVED: \_\_\_\_\_

DATE: **SEPT 12 1978**

**SOUTH ABUTMENT  
E.A.R.T. SEC. 25BR  
MARION COUNTY  
STA. 687+90**