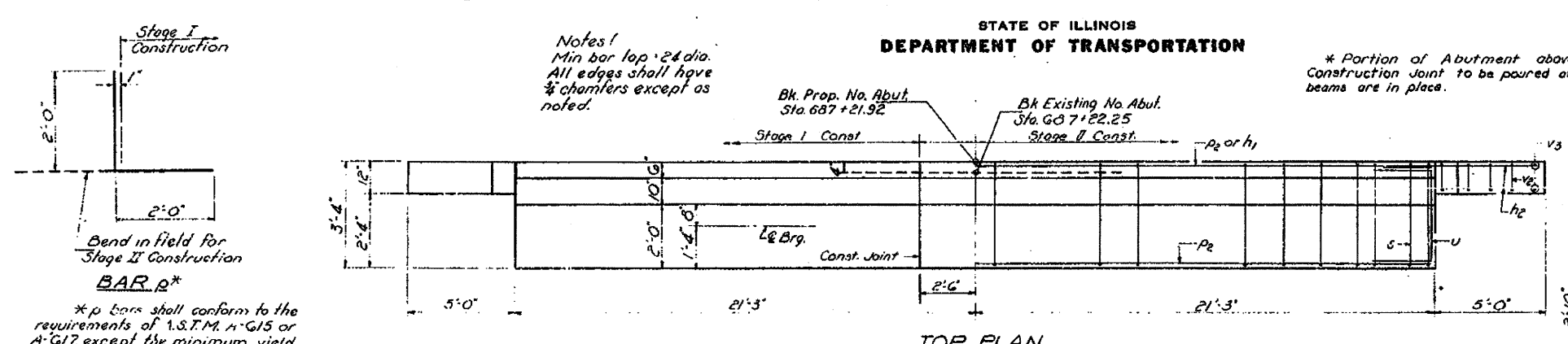
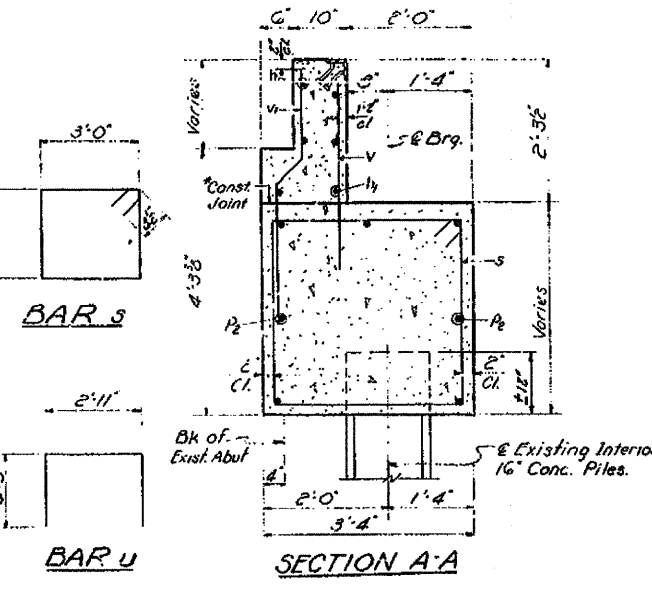
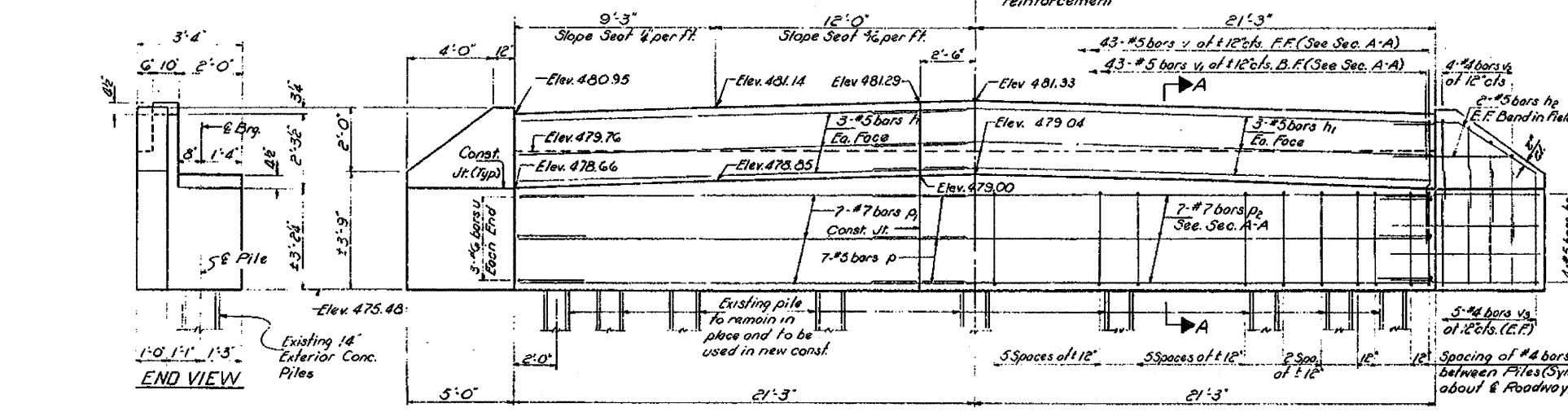


STATE OF ILLINOIS
DEPARTMENT OF TRANSPORTATION

ROUTE NO.	SECTION	SPRINT	TOTAL SHEETS	SHEET NO.	SHEET NO. 7
25BR	Marion	11	10	8 SHEETS	

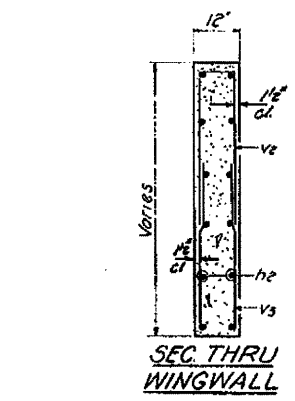


BAR p*
*p bars shall conform to the requirements of A.S.T.M. A-615 or A-617, except the minimum yield strength shall not be less than 53,000 p.s.i. nor more than 45,000 p.s.i.



ONE ABUTMENT BILL OF MATERIAL

Bar	No	Size	Length	Shape
h	6	#5	18'-6"	—
h1	6	#3	23'-6"	—
h2	24	#5	7'-0"	—
p	13	#5	4'-0"	—
p1	7	#7	18'-6"	—
p2	7	#7	23'-6"	—
s	38	#4	12'-5"	□
u	6	#6	11'-5"	□
v	43	#5	4'-3"	—
v1	43	#5	4'-3"	—
v2	8	#4	7'-3"	□
v3	20	#4	3'-6"	—
Class X Concrete				Cu. Yds. 22.7
Reinforcement Bars				Lbs. 1980
Concrete Removal				Cu. Yds. 15



DESIGNED *Charles P. Jones*
CHECKED *John A. Morris*
DRAWN *W.E.D.*
CHECKED *J.M.*

EXAMINED *[Signature]*
PASSED
APPROVED

STATE OF ILLINOIS
DEPARTMENT OF TRANSPORTATION

FILE NAME	USER NAME	DESIGNED	REVISED	EXISTING STRUCTURE PLANS FOR INFORMATION ONLY	F.A.M. RITE	SECTION	COUNTY	TOTAL SHEETS	SHEET NO.
	#USER#	-	-		322	25BR-1	MARION	63	52
#FILE#	PLOT SCALE	DRAWN	REVISED	SCALE:	SHEET NO. 6 OF 7 SHEETS	STA.	TO STA.	CONTRACT NO. 76A83	
	#SCALE#	-	-					ILLINOIS FED. AID PROJECT	
	PLOT DATE	CHECKED	REVISED						
	#DATE#	-	-						

NORTH ABUTMENT
F.A.R.T. 2 SEC. 25BR
MARION COUNTY
STA. 687+90
Rev. 6-6-75