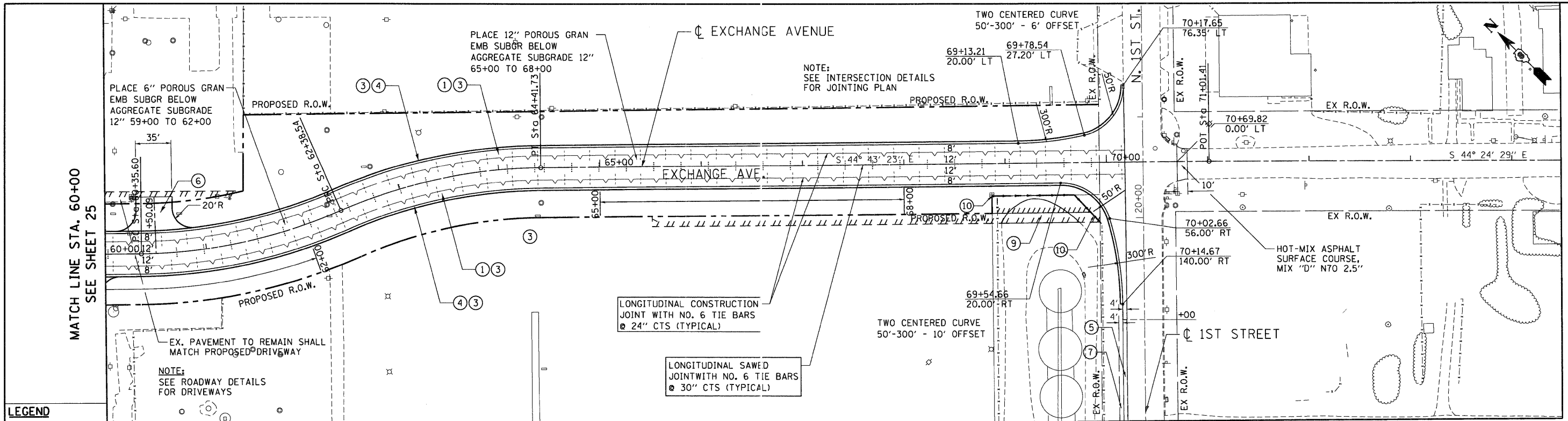


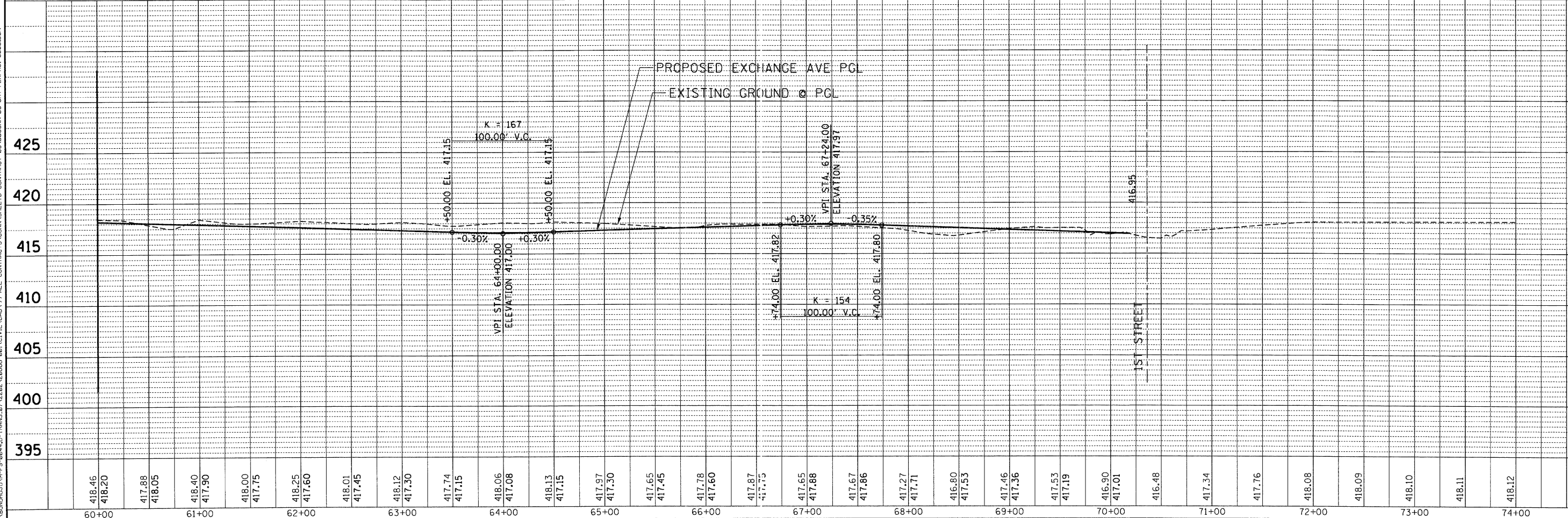
PLAN	SURVEYED	BY	DATE
	PLOTTED		
	CHECKED		
	NO. OF WAY CHECKED		
	CADD FILE NAME		
	NO.		

PROFILE	SURVEYED	BY	DATE
	PLOTTED		
	CHECKED		
	NO. OF WAY CHECKED		
	CADD FILE NAME		
	NO.		

13-09-2009 10:01:24 BONDHLJD  
 C:\P-CADDSPACE\BONDHLJD\M-FS-0044.D-TRANS.071229220868-001\CIVIL\CAD199 ALL CONTRACTS\CONNSHEETS CONTRACT 03\03CONN-03-SHT-PLANPROJ-68000.DGN



- LEGEND**
- ① PORTLAND CEMENT CONCRETE PAVEMENT 12" (JOINTED)
  - ② HOT-MIX ASPHALT SURFACE COURSE, MIX "C", N 50, 2"
  - ③ AGGREGATE SUBGRADE 12"
  - ④ COMBINATION CONCRETE CURB AND GUTTER, TYPE B-6.24
  - ⑤ HOT-MIX ASPHALT SHOULDERS, 8"
  - ⑥ PCC DRIVEWAY PAVEMENT, 8"
  - ⑦ AGGREGATE SHOULDERS, TYPE A, 6"
  - ⑧ CLASS B PATCHES
  - ⑨ AGGREGATE SURFACE COURSE, TYPE B, 8"
  - ⑩ CHAIN LINK FENCE, 6'



FILE NAME =	USER NAME = #USER#	DESIGNED - JB	REVISED -	<b>STATE OF ILLINOIS</b> <b>DEPARTMENT OF TRANSPORTATION</b> I-70 CONNECTION	<b>PROPOSED ROADWAY PLAN &amp; PROFILE</b> <b>EXCHANGE AVENUE</b> <b>STA. 60+00.00 TO 1ST STREET</b>		F.A.P. RTE. 9153	SECTION 82-1K	COUNTY ST. CLAIR	TOTAL SHEETS 107	SHEET NO. 26	
#FILEL#	PLOT SCALE = #SCALE#	DRAWN - JB	REVISED -		SCALE: HORIZ. 1"=50'	VERT. 1"=5'	STA.	TO STA.	FED. ROAD DIST. NO.	ILLINOIS FED. AID PROJECT		
	PLOT DATE = #DATE#	CHECKED - ACL	REVISED -									
		DATE - 10/09/09	REVISED -									