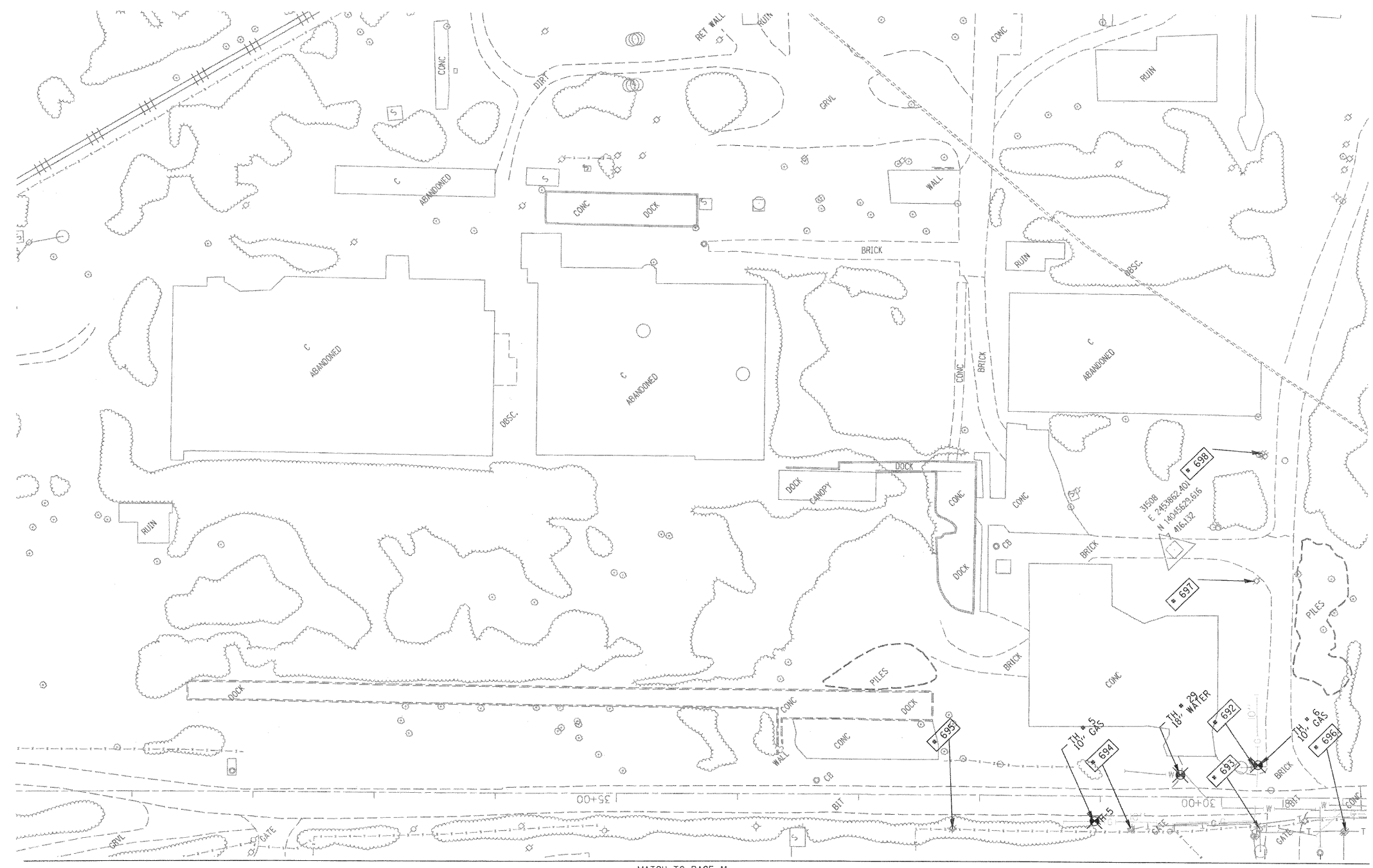


TBE Pole Number	Approximate Location	Identification # on Pole	Utilities Attached to Poles	Utility Owners	Notes: Additional Items Attached to Poles
692	NW OF POLE 691	25558 739150	ELECTRIC	AMEREN ELECTRIC	LIGHT
693	SW OF POLE 692 PACKER/MAIN ST	NO TAG	NO UTILITIES		ABANDONED POLE
694	NW OF POLE 693	NO TAG	TELEPHONE	AT&T	GUY - SE, TEL DROP
695	NW OF POLE 694	739478	TELEPHONE	AT&T	LIGHT
696	SE OF POLE 693 CORNER OF PACKER/MAIN ST	NO TAG	NO UTILITIES		ABANDONED POLE
697	NE OF POLE 692 PACKER/MAIN ST	NO TAG	ELECTRIC	AMEREN ELECTRIC	LIGHT
698	NE OF POLE 697	739152	NO UTILITIES		ABANDONED POLE



MATCH TO PAGE 29

MATCH TO PAGE 11

UNKNOWN	ABANDONED SANITARY
→	FORCE MAIN (OL "D")
→	FORCE MAIN (OL "D")
→	CABLE TV
→	TELEPHONE
→	GAS
→	GAS (OL "D")
→	ELECTRIC
→	WATER
→	WATER (OL "D")
→	FIBER OPTIC
→	FIBER OPTIC (OL "D")
→	WELL DRAINAGE
→	UTILITY POLE
→	TBE TEST HOLE

Utilities shown in color on these plans as depicted in the legend have been investigated by TBE Group, Inc in accordance with SUE Industry Standards. All other information shown has been provided to TBE Group, Inc by others. TBE's SUE field investigation was finished on 1/22/09. Changes to utilities after this date may have been made and therefore may result in variances from this plan. Consideration should be given to updating this plan if deemed advisable prior to final design and construction.

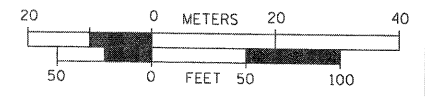
*Plans provided in black and white, color copies available upon request.

ALL UTILITIES SHOWN QUALITY LEVEL "B" UNLESS NOTED OTHERWISE.

- Utility Quality Level "A" : Test Hole
- Utility Quality Level "B" : Designating
- Utility Quality Level "C" : Research with Survey
- Utility Quality Level "D" : Records Research



TBE GROUP, INC.
 CIVIL ENGINEERING • TRANSPORTATION • ENVIRONMENTAL
 PLANNING • UTILITY ENGINEERING/LOCATING



Checked By: _____
 Date: _____

TBE Job No. IL09500601-602-603-604-607
 SUE Plan Page: 30 of 30

FILE NAME =	USER NAME =	DESIGNED <i>EG, JP, LP</i>	REVISED
#FILE#	PLOT SCALE = 1" = 50'	DRAWN <i>KLC</i>	REVISED
	PLDT DATE = #DATE#	CHECKED <i>JB</i>	REVISED
		DATE <i>2/13/09</i>	REVISED

STATE OF ILLINOIS
DEPARTMENT OF TRANSPORTATION

Mississippi River Bridge Project

SCALE: SHEET NO. STA. TO STA.

F.A. RTE.	SECTION	COUNTY	TOTAL SHEETS	SHEET NO.
		St. Clair	107	72
PTB NO. 147-038				
FED. ROAD DIST. NO. ILLINOIS Job No.: D-98-061-08				