

PART OF U.S. SURVEY 627, T2N, R10W, OF THE 3RD PM, ST. CLAIR COUNTY, ILLINOIS

SEE COORDINATE LIST AND BASIS OF COORDINATES AND BEARINGS STATEMENT ON SHEET 2

SEE SHEET 14

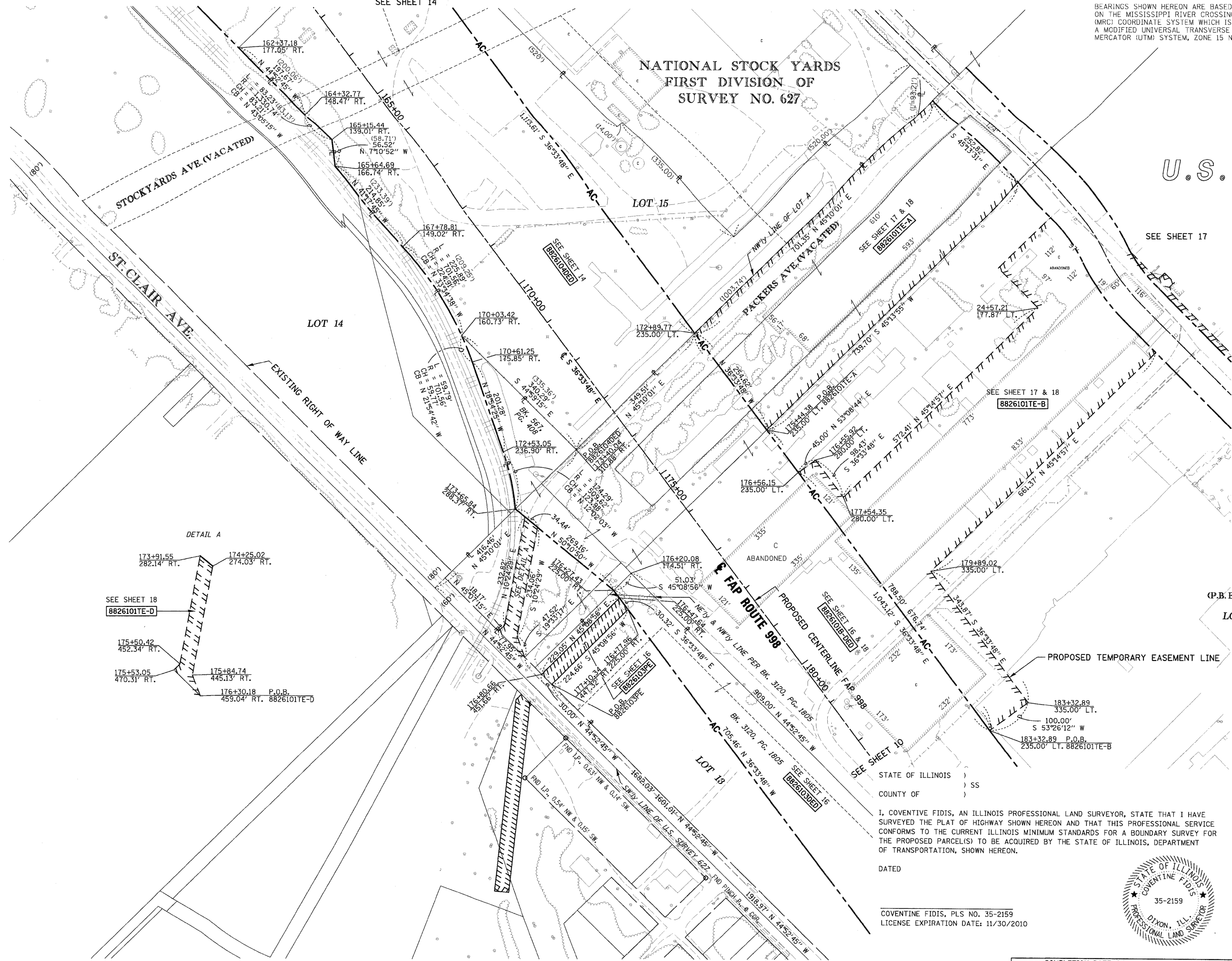
BEARINGS SHOWN HEREON ARE BASED ON THE MISSISSIPPI RIVER CROSSING (MRC) COORDINATE SYSTEM WHICH IS A MODIFIED UNIVERSAL TRANSVERSE MERCATOR (UTM) SYSTEM, ZONE 15 NORTH.



SPACE RESERVED FOR RECORDING OFFICER

NATIONAL STOCK YARDS
FIRST DIVISION OF
SURVEY NO. 627

U.S. SURVEY 627



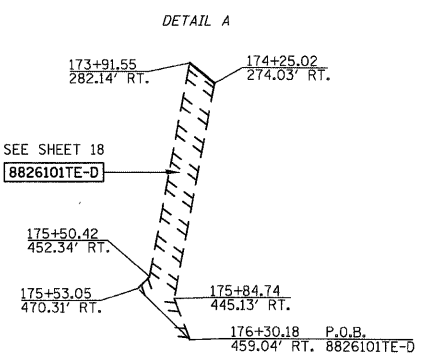
STOCKYARDS AVE. (VACATED)

ST. CLAIR AVE.

LOT 14

LOT 15

SEE SHEET 17



SEE SHEET 18
8826101TE-D

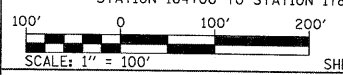
(P.B.E, PG. 14)

LOT A

NOTE:
EXISTING R.O.W. OF ST. CLAIR AVE. ESTABLISHED PER BK OF DEEDS Y-5, PG. 97 & PB H, PG. 34

AMERICAN
SURVEYING & ENGINEERING, P.C.
841 N. Galena Ave. Dixon, IL 61021
815-288-6231
ILLINOIS PROFESSIONAL DESIGN FIRM NO. 184-003192

ILLINOIS DEPARTMENT OF TRANSPORTATION
PLAT OF HIGHWAYS
FAP ROUTE 998
SECTION 82-1K
ST. CLAIR COUNTY
JOB NO. R-98-026-08
STATION 164+00 TO STATION 178+00



SHEET 15 OF
ILLINOIS DEPARTMENT OF TRANSPORTATION
DIVISION OF HIGHWAYS/REGION 5/DISTRICT 8
1102 EASTPORT PLAZA DRIVE
COLLINGSVILLE, ILLINOIS 62234-6198

F.A. RTE.	SECTION	COUNTY	TOTAL SHEETS	SHEET NO.
			107	75

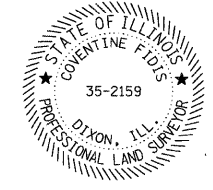
CONTRACT NO.
FED. ROAD DIST. NO. ILLINOIS FED. AID PROJECT

STATE OF ILLINOIS)
COUNTY OF) SS

I, COVENTINE FIDIS, AN ILLINOIS PROFESSIONAL LAND SURVEYOR, STATE THAT I HAVE SURVEYED THE PLAT OF HIGHWAY SHOWN HEREON AND THAT THIS PROFESSIONAL SERVICE CONFORMS TO THE CURRENT ILLINOIS MINIMUM STANDARDS FOR A BOUNDARY SURVEY FOR THE PROPOSED PARCEL(S) TO BE ACQUIRED BY THE STATE OF ILLINOIS, DEPARTMENT OF TRANSPORTATION, SHOWN HEREON.

DATED

COVENTINE FIDIS, PLS NO. 35-2159
LICENSE EXPIRATION DATE: 11/30/2010



COMPLETION DATE OF FIELD WORK PERFORMED	
LAND SURVEY:	ROW STAKING: