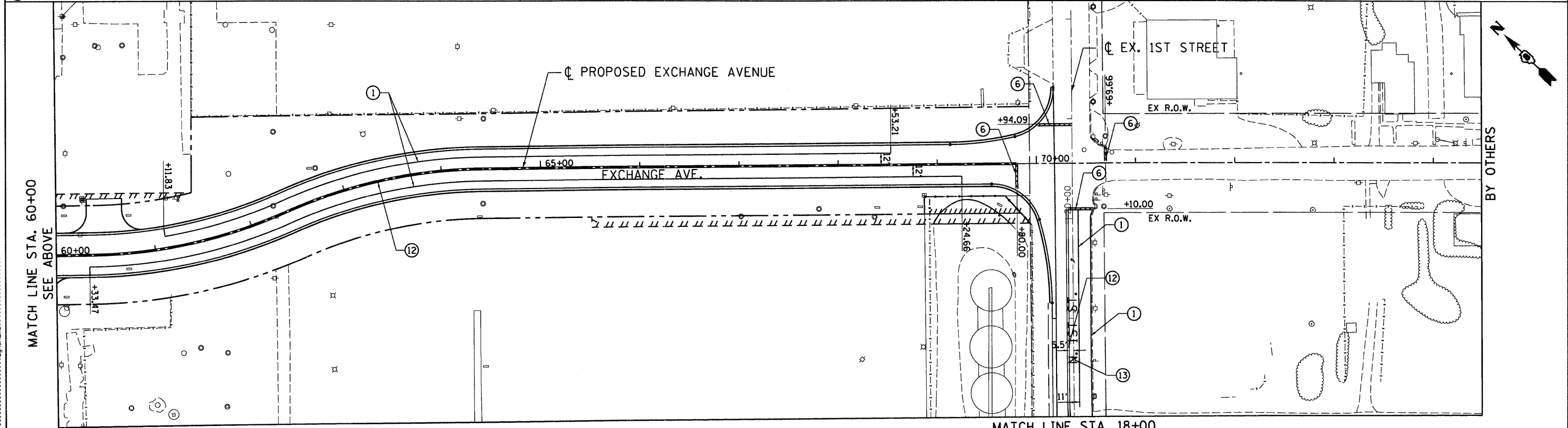


PAVEMENT MARKING LEGEND

- ① POLYUREA - LINE 4" WHITE
- ② POLYUREA - LINE 5" WHITE
- ③ POLYUREA - LINE 6" WHITE
- ④ POLYUREA - LINE 8" WHITE
- ⑤ POLYUREA - LINE 12" WHITE
- ⑥ POLYUREA - LINE 24" WHITE
- ⑦ POLYUREA - LINE 4" YELLOW
- ⑧ POLYUREA - LINE 5" YELLOW
- ⑨ POLYUREA - LINE 6" YELLOW
- ⑩ POLYUREA - LINE 8" YELLOW
- ⑪ POLYUREA - LINE 12" YELLOW
- ⑫ POLYUREA - DOUBLE LINE 4" YELLOW
- ⑬ POLYUREA - LETTERS AND SYMBOLS
- ◆ RAISED REFLECTIVE PAVEMENT MARKERS (TWO-WAY AMBER)
- ▲ RAISED REFLECTIVE PAVEMENT MARKERS (ONE-WAY CRYSTAL)
- ◆ RAISED REFLECTIVE PAVEMENT MARKERS (ONE-WAY AMBER)



FILE NAME =	USER NAME = #USER#	DESIGNED - AAB	REVISED -
#FILE#		DRAWN - MNR	REVISED -
	PLOT SCALE = #SCALE#	CHECKED - DPD	REVISED -
	PLOT DATE = #DATE#	DATE - 10/09/09	REVISED -

ABNA ENGINEERING INC. PROFESSIONAL ENGINEERS EAST ST. LOUIS, ILLINOIS	STATE OF ILLINOIS DEPARTMENT OF TRANSPORTATION I-70 CONNECTION
---	--

PAVEMENT MARKING EXCHANGE AVE	
SCALE: 1"=50'	SHEET NO. OF SHEETS STA. TO STA.

F.A.P. RTE.	SECTION	COUNTY	TOTAL SHEETS	SHEET NO.
9153	82-1K	ST. CLAIR	107	83
FED. ROAD DIST. NO.		ILLINOIS FED. AID PROJECT		

CONTRACT NO. 76C40	
--------------------	--

pm-1