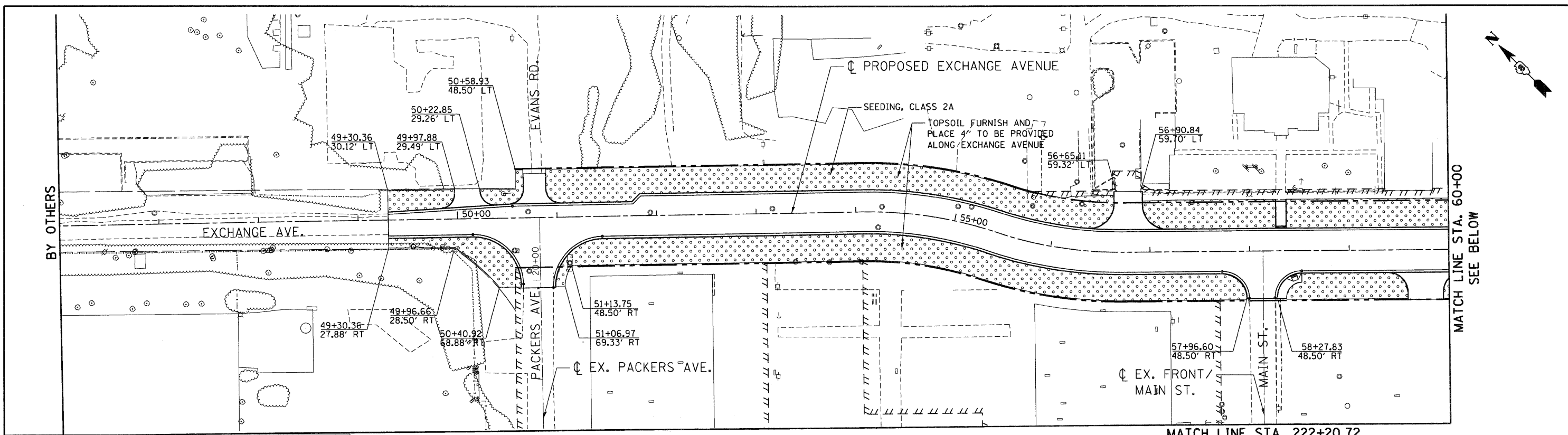
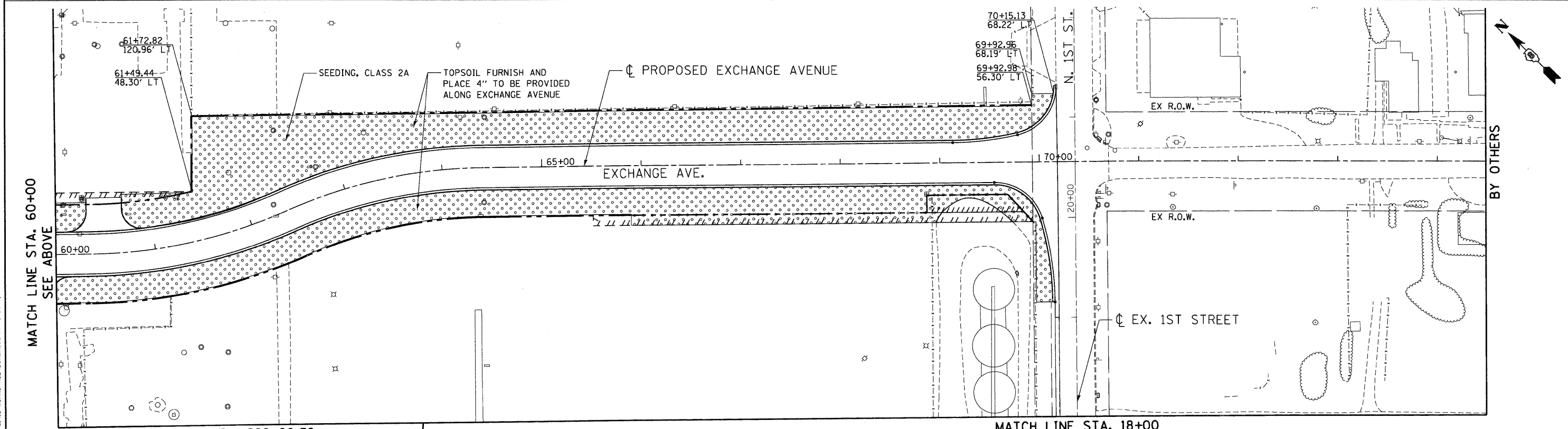


\BDCONN-93-MOTIF.LDN, \BDCONN-93-LEGEND.LDN, \BDCONN-93-PK1.LDN, \BDCONN-93-LAYOUT.LDN, \BDCONN-93-ERIS.LDN, \BDCONN-93-LANDSCP.LDN, \BDCONN-93-STAGIND.LDN, \BDCONN-93-
 12-08-2009, 10:01:41
 BONDHJJD C:\C-WORKSPACE\BONDHJJD\M-FS-0844.D-TRANS_07-2282-2868-001\CIVIL\CAD\93 ALL CONTRACTS\CONNSHEETS\CONTRACT_03\BDCONN-93-SHT-LANDSCP1-4602.LDN



LEGEND

SEEDING, CLASS 2A
 (SALT TOLERANT ROADSIDE MIXTURE)
 NITROGEN, PHOSPHOROUS, AND POTASSIUM
 FERTILIZER NUTRIENTS (90 LBS/ACRE EACH)
 MULCH, METHOD 2



MATCH LINE STA. 60+00 SEE ABOVE

MATCH LINE STA. 222+20.72 SEE SHEET 89

MATCH LINE STA. 18+00 SEE SHEET 88

FILE NAME = #FILEL#	USER NAME = #USER#	DESIGNED - JB	REVISED -	STATE OF ILLINOIS DEPARTMENT OF TRANSPORTATION I-70 CONNECTION	LANDSCAPING PLANS EXCHANGE AVE				F.A.P. RTE. 9153	SECTION 82-1K	COUNTY ST. CLAIR	TOTAL SHEETS 107	SHEET NO. 87
PLOT SCALE = #SCALE#		CHECKED - ACL	REVISED -		SCALE: 1"=50'	SHEET NO.	OF	SHEETS	STA.	TO STA.	CONTRACT NO. 76C40		
PLOT DATE = #DATE#		DATE - 10/09/09	REVISED -		FED. ROAD DIST. NO. ILLINOIS FED. AID PROJECT								
TENG TENG & ASSOCIATES, INC. ENGINEERS/ARCHITECTS/PLANNERS CHICAGO, ILLINOIS													