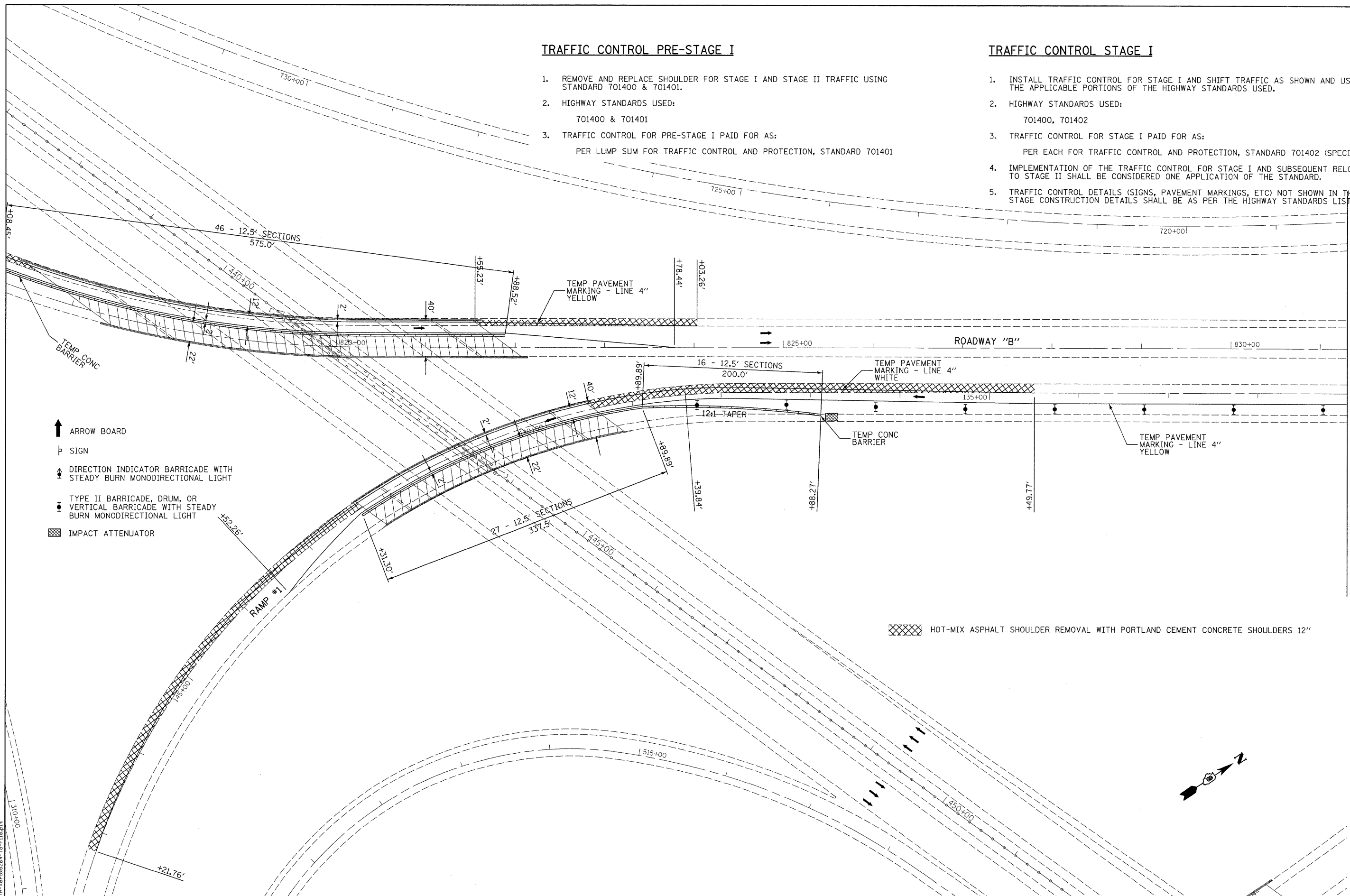


**TRAFFIC CONTROL PRE-STAGE I**

1. REMOVE AND REPLACE SHOULDER FOR STAGE I AND STAGE II TRAFFIC USING STANDARD 701400 & 701401.
2. HIGHWAY STANDARDS USED:  
701400 & 701401
3. TRAFFIC CONTROL FOR PRE-STAGE I PAID FOR AS:  
PER LUMP SUM FOR TRAFFIC CONTROL AND PROTECTION, STANDARD 701401

**TRAFFIC CONTROL STAGE I**

1. INSTALL TRAFFIC CONTROL FOR STAGE I AND SHIFT TRAFFIC AS SHOWN AND USING THE APPLICABLE PORTIONS OF THE HIGHWAY STANDARDS USED.
2. HIGHWAY STANDARDS USED:  
701400, 701402
3. TRAFFIC CONTROL FOR STAGE I PAID FOR AS:  
PER EACH FOR TRAFFIC CONTROL AND PROTECTION, STANDARD 701402 (SPECIAL)
4. IMPLEMENTATION OF THE TRAFFIC CONTROL FOR STAGE I AND SUBSEQUENT RELOCATION TO STAGE II SHALL BE CONSIDERED ONE APPLICATION OF THE STANDARD.
5. TRAFFIC CONTROL DETAILS (SIGNS, PAVEMENT MARKINGS, ETC) NOT SHOWN IN THESE STAGE CONSTRUCTION DETAILS SHALL BE AS PER THE HIGHWAY STANDARDS LISTED IN #2.



- ↑ ARROW BOARD
- ⊥ SIGN
- ▲ DIRECTION INDICATOR BARRICADE WITH STEADY BURN MONODIRECTIONAL LIGHT
- TYPE II BARRICADE, DRUM, OR VERTICAL BARRICADE WITH STEADY BURN MONODIRECTIONAL LIGHT
- ▨ IMPACT ATTENUATOR

▨ HOT-MIX ASPHALT SHOULDER REMOVAL WITH PORTLAND CEMENT CONCRETE SHOULDERS 12"

**STATE OF ILLINOIS  
DEPARTMENT OF TRANSPORTATION**

**HORNER &  
SHIRIN, INC.  
ENGINEERS**

**STAGE CONSTRUCTION DETAILS**  
I-255 RAMP STRUCTURES OVER I-55/70  
STAGE I

F.A.I. RTE.	SECTION	COUNTY	TOTAL SHEETS	SHEET NO.
70	60-(5,6,7)RS, 60-(6,7)BR	MADISON	185	52
CONTRACT NO. 76C56				

SCALE: 1" = 50' SHEET NO. 4 OF 6 SHEETS STA. 443+00 TO STA. 129+00

FED. ROAD DIST. NO. ILLINOIS FED. AID PROJECT

LAST SAVED = 9/11/2009  
PEN TABLE = V8.tbl  
PLOT DRIVER = TR-keras6284-Tp-F1.plt

FILE NAME =	USER NAME = sdonahue	DESIGNED -	REVISED -
h:\08099\work_order\3\oad\plans\087656-Sht-Staging-I-255Ramps-StageI-04.dgn		DRAWN -	REVISED -
		CHECKED -	REVISED -
		DATE -	REVISED -
PLOT SCALE = 50.0023' / IN.			
PLOT DATE = 9/16/2009 8:52:42 PM			