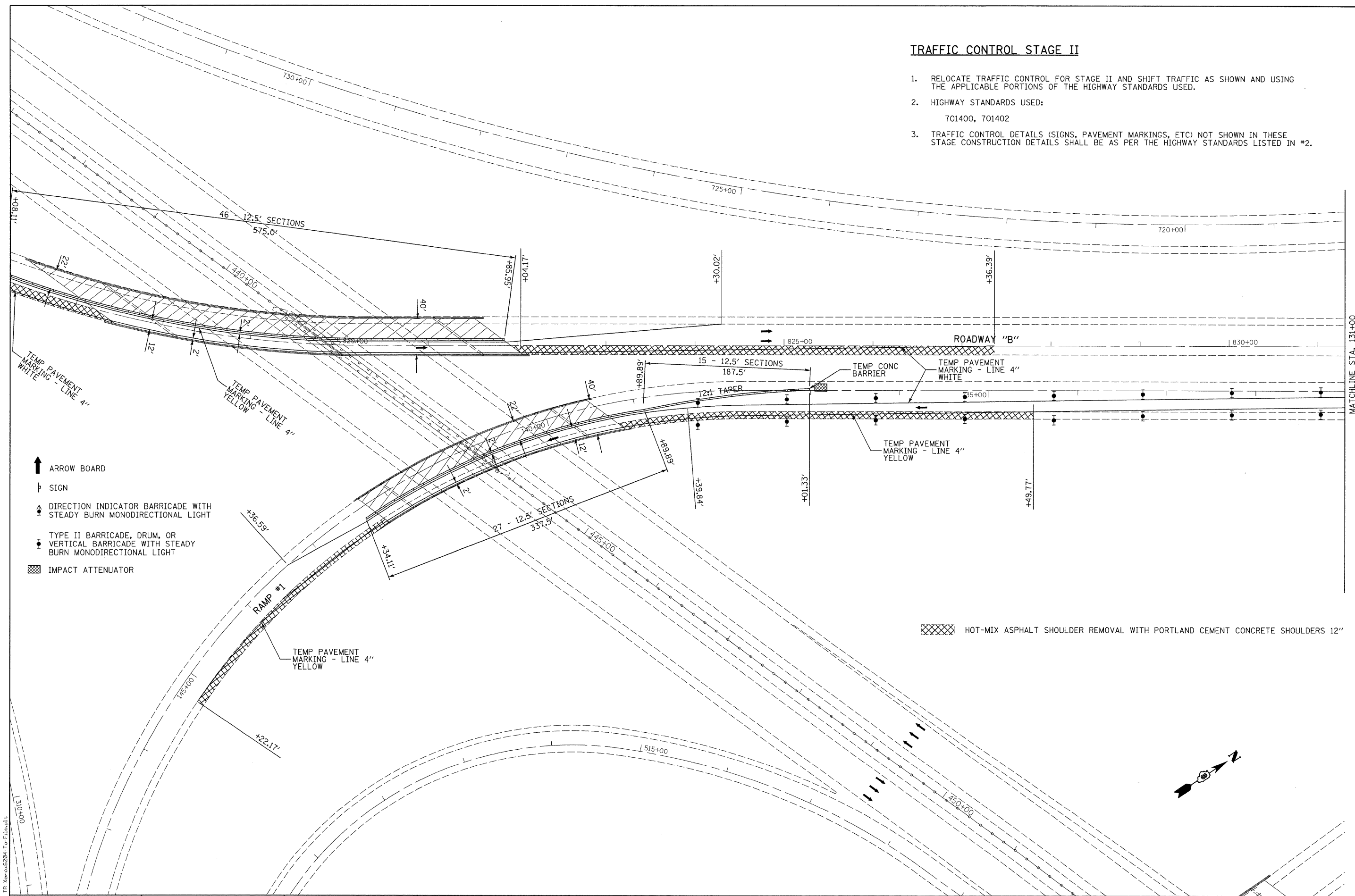


TRAFFIC CONTROL STAGE II

1. RELOCATE TRAFFIC CONTROL FOR STAGE II AND SHIFT TRAFFIC AS SHOWN AND USING THE APPLICABLE PORTIONS OF THE HIGHWAY STANDARDS USED.
2. HIGHWAY STANDARDS USED:
701400, 701402
3. TRAFFIC CONTROL DETAILS (SIGNS, PAVEMENT MARKINGS, ETC) NOT SHOWN IN THESE STAGE CONSTRUCTION DETAILS SHALL BE AS PER THE HIGHWAY STANDARDS LISTED IN #2.



- ↑ ARROW BOARD
- ⊥ SIGN
- ▲ DIRECTION INDICATOR BARRICADE WITH STEADY BURN MONODIRECTIONAL LIGHT
- ▼ TYPE II BARRICADE, DRUM, OR VERTICAL BARRICADE WITH STEADY BURN MONODIRECTIONAL LIGHT
- ▣ IMPACT ATTENUATOR

▣ HOT-MIX ASPHALT SHOULDER REMOVAL WITH PORTLAND CEMENT CONCRETE SHOULDERS 12"

LAST SAVED = 9/11/2009
 PEN TABLE = VB.tb1
 PLOT DRIVER = TR-Xerox6204-Top-F1.plt

FILE NAME =	USER NAME = sdonehue	DESIGNED -	REVISED -
1:\08090\work_order_3\cad\t\plans\087656-Sht-Staging-1-255Ramps-StageII-04.dgn		DRAWN -	REVISED -
PLOT SCALE = 50.0023 / IN.		CHECKED -	REVISED -
PLOT DATE = 9/16/2009 8:52:53 PM		DATE -	REVISED -

**STATE OF ILLINOIS
DEPARTMENT OF TRANSPORTATION**

**HORNER &
SHIFRIN, INC.
ENGINEERS**

STAGE CONSTRUCTION DETAILS
I-255 RAMP STRUCTURES OVER I-55/70
STAGE II

SCALE: 1" = 50' SHEET NO. 4 OF 6 SHEETS STA. 443+00 TO STA. 129+00

F.A.I. RTE.	SECTION	COUNTY	TOTAL SHEETS	SHEET NO.
TO	60-(5,6,7)RS, 60-(6,7)BR	MADISON	185	58
FED. ROAD DIST. NO. ILLINOIS FED. AID PROJECT			CONTRACT NO. 76C56	