

STATE OF ILLINOIS  
DEPARTMENT OF TRANSPORTATION

Location	Joint Size	"C" at 50°F	"D" at 50°F
W. Abut.	2"	2"	1 1/2" Min.
E. Abut.	2 1/2"	2 1/2"	1 3/4" Min.

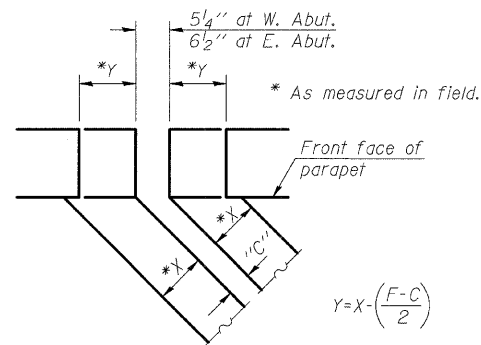
**INSTALLATION NOTES**

- Install continuous seal in roadway and parapet.
- Install anchor blocks as indicated.

Note A:  
Maximum spacing of threaded anchor rods shall be 12" centers.

**SKREW LIMITATIONS**

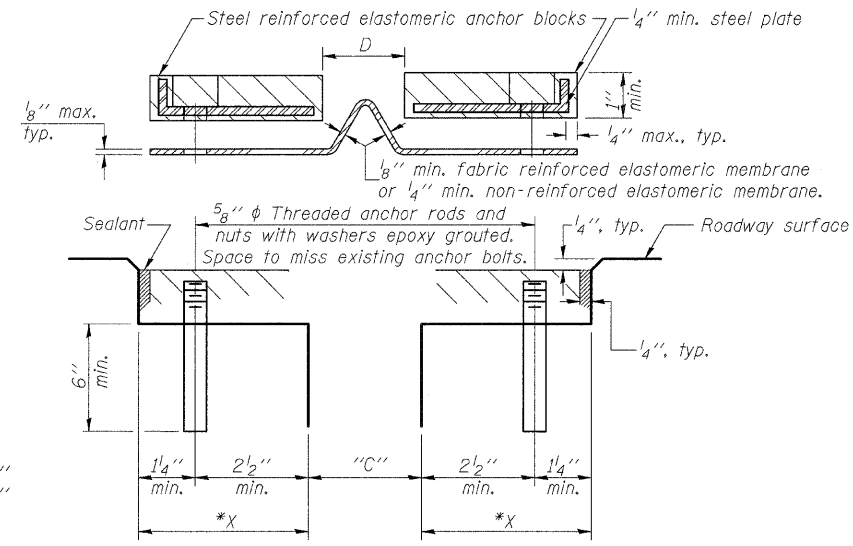
For skews greater than 50°, the anchor blocks and the elastomeric membrane, installed according to dimension "D", might require modifications to insure a minimum clearance of 1/2" from centerline of threaded anchor rods to edge of parapet opening. The anchor blocks and the elastomeric membrane shall also be installed to the top of the parapet with the threaded anchor rods spaced at ±12" cts.



**BLOCKOUT SKETCH**

$$Y = X - \left( \frac{F - C}{2} \right)$$

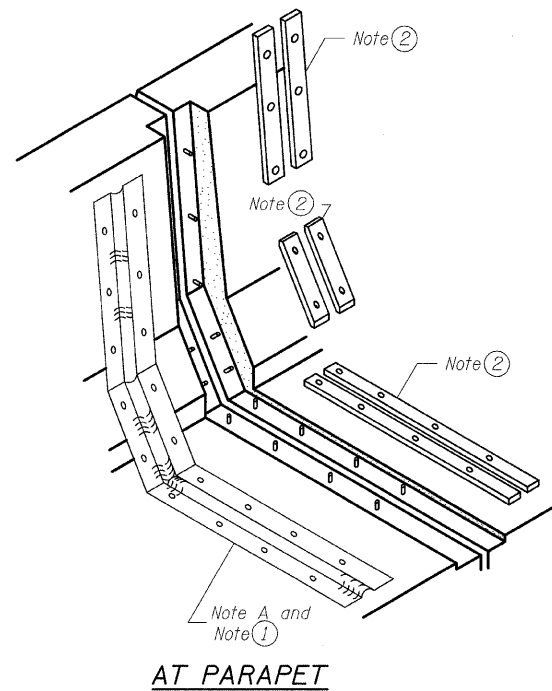
"F" dimension for W. Abut. = 5 1/4"  
"F" dimension for E. Abut. = 6 1/2"



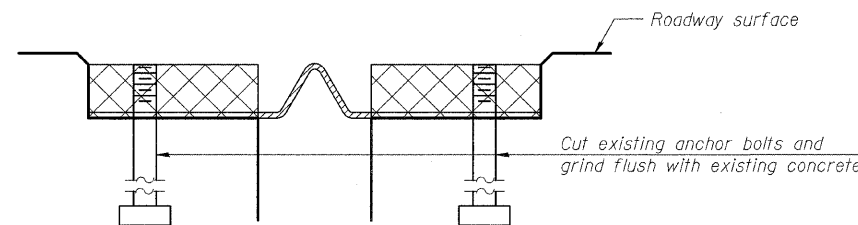
**CROSS SECTION**

**GENERAL NOTES**

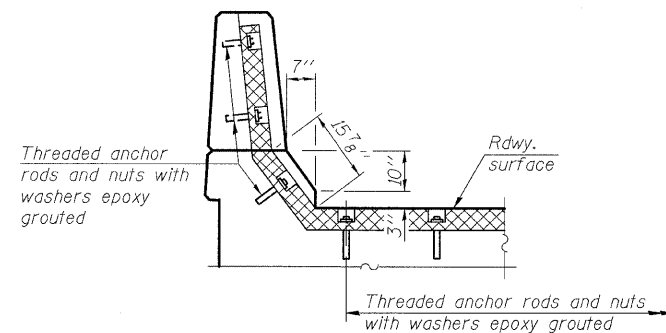
Continuous Seal Neoprene Expansion Joint shall consist of molded anchor blocks of elastomer and steel, field assembled over continuous lengths of elastomeric membrane.  
The elastomeric membrane shall be premolded with a single or a double upward convolution that will have a "memory" to return to its molded position upon joint closure.  
The convolution length shall be such that the extended length will not be greater than the manufactured length when the joint is fully expanded in its design range and will not protrude above the anchor blocks when the joint is fully compressed.  
The parapet and roadway membrane shall be made continuous by an approved vulcanizing process. Lapping will not be permitted.



**AT PARAPET**



**REMOVAL CROSS SECTION**



**AT PARAPET**

**BILL OF MATERIAL  
TWO STRUCTURES**

ITEM	UNIT	QUANTITY
Neoprene Expansion Joint 2"	Foot	306.0
Neoprene Expansion Joint 2 1/2"	Foot	306.0

**CONTINUOUS SEAL TYPE  
NEOPRENE EXPANSION JOINTS  
STRUCTURE NO. 060-0010 (E.B.)  
STRUCTURE NO. 060-0011 (W.B.)**

DESIGNED	KLH
CHECKED	EML
DRAWN	KLH
CHECKED	EML

**HORNER &  
SHIFRIN, INC.  
ENGINEERS**

SHEET NO. 5 7 SHEETS	F.A.I. RTE.	SECTION	COUNTY	TOTAL SHEETS	SHEET NO.
	70	60-(5,6,7)RS, 60-(6,7)BR	MADISON	185	94
CONTRACT NO. 76C56					
FED. ROAD DIST. NO. ILLINOIS FED. AID PROJECT					