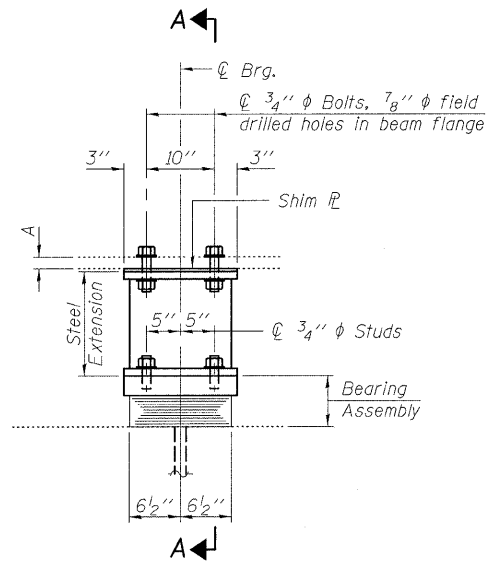
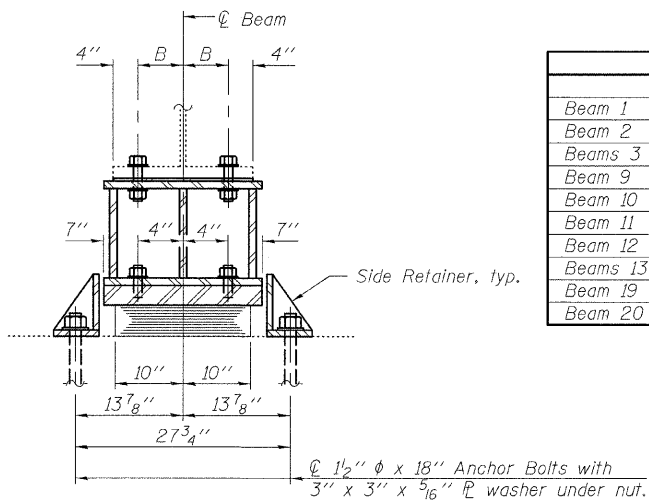


STATE OF ILLINOIS
DEPARTMENT OF TRANSPORTATION

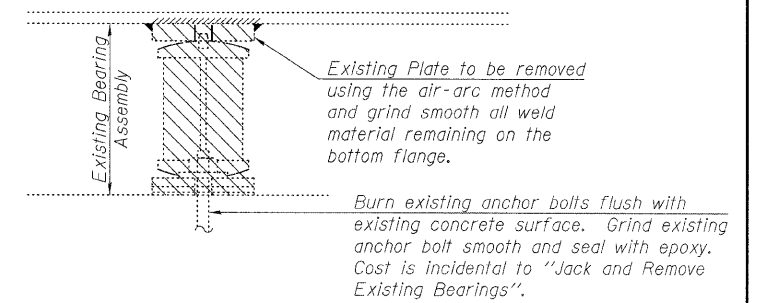


ELEVATION AT PIER 2



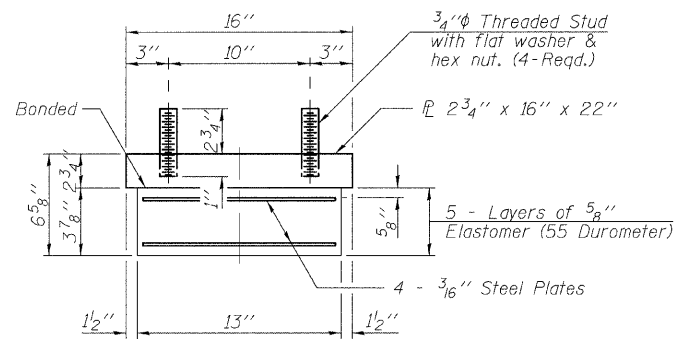
SECTION A-A

| TABLE OF VARIABLE DIMENSIONS | | | | | |
|------------------------------|---------|--------|---------|---------|--------|
| | A | B | C | D | E |
| Beam 1 | 19 1/8" | 4 5/8" | 9" | 7" | 6 1/8" |
| Beam 2 | 19 1/8" | 4 5/8" | 13 1/8" | 11 1/8" | 6 1/8" |
| Beams 3 thru 8 | 19 1/8" | 4 1/4" | 9 3/4" | 7 3/4" | 6 3/4" |
| Beam 9 | 19 1/8" | 4 5/8" | 12 1/4" | 10 1/4" | 6 1/8" |
| Beam 10 | 19 1/8" | 4 5/8" | 9" | 7" | 6 1/8" |
| Beam 11 | 19 1/8" | 4 5/8" | 9" | 7" | 6 1/8" |
| Beam 12 | 19 1/8" | 4 5/8" | 13 1/8" | 11 1/8" | 6 1/8" |
| Beams 13 thru 18 | 19 1/8" | 4 1/4" | 9 3/4" | 7 3/4" | 6 3/4" |
| Beam 19 | 19 1/8" | 4 5/8" | 12 1/4" | 10 1/4" | 6 1/8" |
| Beam 20 | 19 1/8" | 4 5/8" | 9" | 7" | 6 1/8" |



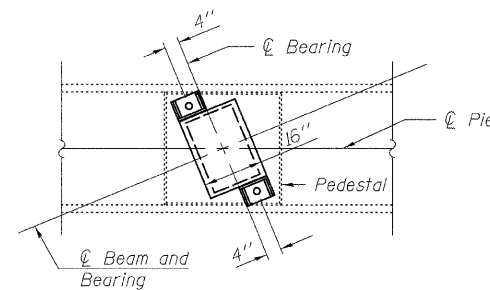
EXISTING BEARING REMOVAL DETAIL

TYPE I ELASTOMERIC EXP. BRG.



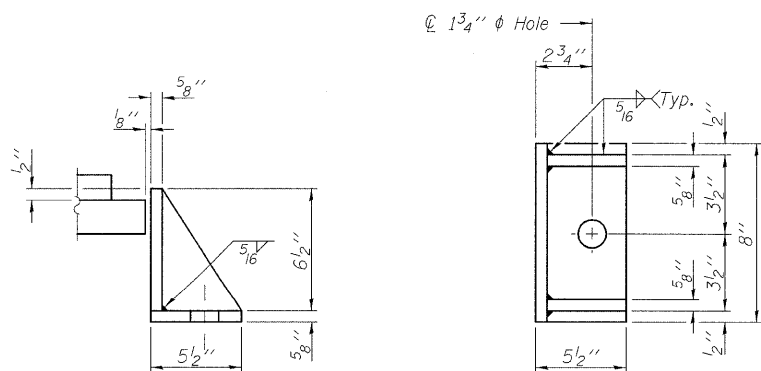
BEARING ASSEMBLY

Note:
Shim plates shall not be placed under Bearing Assembly.



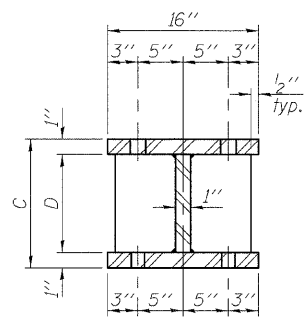
PART PLAN AT BEARING

Notes:
The structural steel plates of the Bearing Assembly shall conform to the requirements of AASHTO M 270 Grade 50.
Anchor bolts shall be ASTM F1554 all-thread (or an Engineer-approved alternate material) of the grade(s) and diameter(s) specified. The corresponding specified grade of AASHTO M314 anchor bolts may be used in lieu of ASTM F1554.
Drilled and set anchor bolts shall be installed according to Article 521.06 of the Standard Specifications.
Side retainers and other steel members required for the bearing assembly shall be included in the cost of Elastomeric Bearing Assembly, Type I.
Steel extensions, shim plates and connection bolts are included with Furnishing and Erecting Structural Steel.
Prior to ordering any material, the Contractor shall verify in the field all bearing height and shim thickness dimensions.
Minimum jack capacity = 200 Tons.
Existing bearings shall be removed and replaced under traffic.
Diaphragm removal and reinstallation may be required to facilitate drilling holes. Cost included with Furnishing and Erecting Structural Steel.

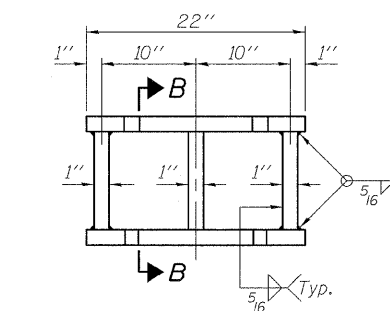


SIDE RETAINER

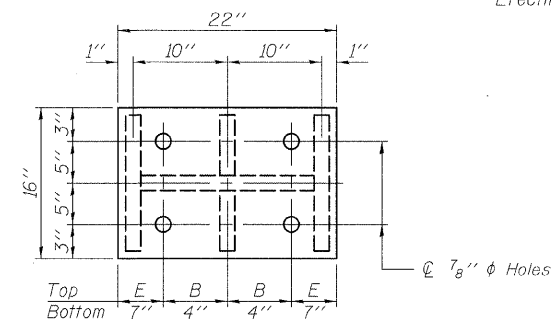
Equivalent rolled angle with stiffeners will be allowed in lieu of welded plates.



SECTION B-B



STEEL EXTENSION DETAIL



PLAN TOP AND BOTTOM PLATE

BILL OF MATERIAL
TWO STRUCTURES

| Item | Unit | Total |
|--|-------|-------|
| Furnishing and Erecting Structural Steel | Pound | 7,100 |
| Jack and Remove Existing Bearing | Each | 20 |
| Elastomeric Bearing Assembly Type I | Each | 20 |
| Anchor Bolts, 1 1/2" | Each | 40 |

PIER BEARING DETAILS
STRUCTURE NO. 060-0010 (E.B.)
STRUCTURE NO. 060-0011 (W.B.)

| | |
|----------|-----|
| DESIGNED | JJD |
| CHECKED | EML |
| DRAWN | JJD |
| CHECKED | EML |

| EXISTING GIRDER REACTION TABLE | |
|--------------------------------|-----------|
| Pier 2 | |
| R ₀ | (k) 133.1 |
| R ₁ | (k) 60.9 |
| R ₂ | (k) 13.1 |
| R _{Total} | (k) 207.1 |

HORNER & SHIFRIN, INC.
ENGINEERS

| | | | | | |
|-------------------------|-------------|--------------------------|---------------------------|--------------|-----------|
| SHEET NO. 6 7 SHEETS | F.A.I. RTE. | SECTION | COUNTY | TOTAL SHEETS | SHEET NO. |
| | 70 | 60-(5,6,7)RS, 60-(6,7)BR | MADISON | 185 | 95 |
| FED. ROAD DIST. NO. | | | ILLINOIS FED. AID PROJECT | | |
| CONTRACT NO. 76C56 | | | | | |