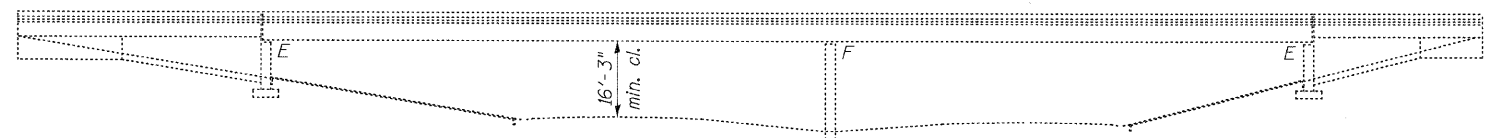


SCOPE OF WORK

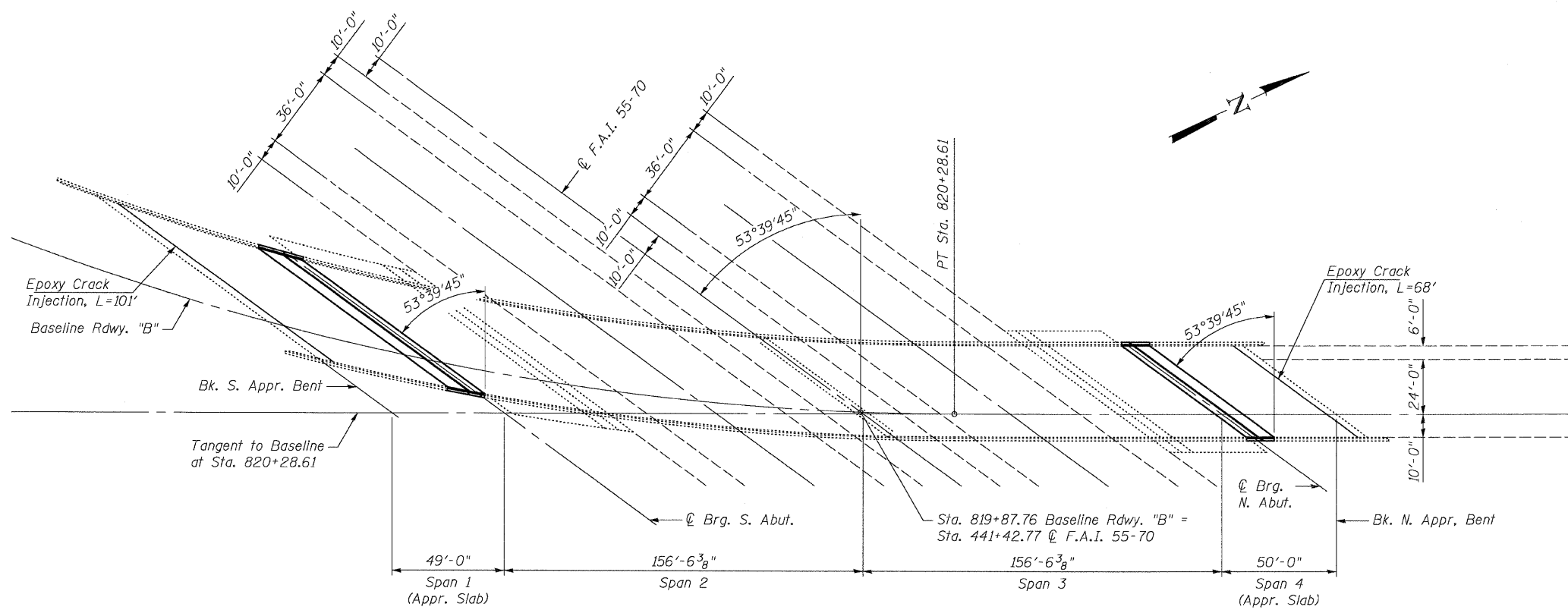
- 1) Replace expansion joints
- 2) Seal joint between approach pavement & approach slab
- 3) Bridge washing on decks, parapets and abutment seats
- 4) Seal deck and parapets with concrete sealer
- 5) Seal abutment seats with concrete sealer
- 6) Install new anchor bolts, retainer and bumper angles at pier bearings

GENERAL NOTES

No field welding is permitted except as specified in the contract documents. Reinforcement bars shall conform to the requirements of ASTM A 706 Gr 60. See Special Provisions. Reinforcement bars designated (E) shall be epoxy coated. Prior to pouring the new concrete deck, all heavy or loose rust, loose mill scale, and other loose or potentially detrimental foreign material shall be removed from the surfaces in contact with concrete. Tightly adhered paint may remain unless otherwise noted. Removal shall be accomplished by methods that will not damage the steel and the cost will be included in the pay item covering removal of the existing concrete. As directed by the Engineer, existing construction accessories welded to the top flange of beams and girders shall be removed. The weld areas shall be ground flush and inspected for cracks using magnetic particle testing (MT) or dye penetrant testing (PT) by qualified personnel approved by the Engineer. Any cracks that cannot be removed by grinding 1/4 inch deep shall be identified and reported to the Bureau of Bridges and Structures for further disposition. The cost of removing welded accessories, grinding and inspecting weld areas and grinding cracks will be paid for according to Article 109.04 of the Standard Specifications. Plan dimensions and details relative to existing plans are subject to nominal construction variations. The Contractor shall field verify existing dimensions and details affecting new construction and make necessary approved adjustments prior to construction or ordering of materials. Such variations shall not be cause for additional compensation for a change in scope of the work, however, the Contractor will be paid for the quantity actually furnished at the unit price bid for the work. The existing structural steel coating contains lead. The Contractor shall take appropriate precautions to deal with the presence of lead on this project. Bridge washing shall be performed on the deck, parapets and abutment seats according to Article 592.00 of the Standard Specifications. Concrete Sealer shall be applied to the abutment seats. Concrete Sealer shall also be applied to the surfaces of the bridge deck and parapets including wings. See Special Provision for "Bridge Deck Concrete Sealer". New structural steel shall be cleaned and painted according to the special provision for "Cleaning and Painting New Metal Structures". New structural steel shall be fully shop painted with the Organic Zinc Rich Primer/Epoxy/Urethane paint system, final finish coat shall be Gray, Munsell No. 5B/7/1. The concrete for bridge decks finished according to Article 503.16(a) of the Standard Specifications shall be placed and compacted parallel to the skew in uniform increments along centerline of bridge. The machine used for finishing shall be set parallel to the skew for striking off and screeding the concrete. All new fasteners shall be AASHTO M 164 Type 1, mechanically galvanized bolts. Holes shall be subpunched or subdrilled 1/16" φ and reamed in the field to 1/8" φ for 1/8" φ bolts, unless otherwise noted. Existing structural steel shall be cleaned and painted as required by the Special Provision "Cleaning and Painting Adjacent Areas of Existing Steel Structures". Joint openings shall be adjusted according to Article 520.04 of the Standard Specifications when the deck is poured at an ambient temperature other than 50° F.



ELEVATION



PLAN

TOTAL BILL OF MATERIAL

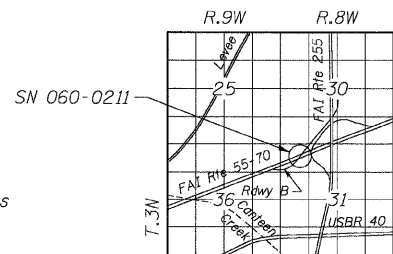
ITEM	UNIT	SUPER	SUB	TOTAL
Concrete Removal	Cu. Yd.	46.4		46.4
Concrete Superstructure	Cu. Yd.	46.6		46.6
Reinforcement Bars, Epoxy Coated	Pound	8310		8310
Bar Splicers	Each	37		37
Preformed Joint Strip Seal	Foot	70		70
Neoprene Expansion Joint 2"	Foot	105		105
Concrete Sealer	Sq. Ft.	26692	543	27235
Bridge Washing No. 5	Each			1
Furnishing & Erecting Structural Steel	Pound	1412		1412
Anchor Bolts, 1 1/4" dia.	Each		24	24
Epoxy Crack Injection	Foot	169		169

INDEX OF SHEETS

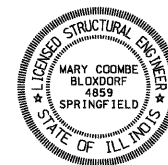
- 1 General Plan
- 2 Stage Construction Details
- 3 Concrete Removal Details
- 4-5 Superstructure Details
- 6 Preformed Joint Strip Seal
- 7 Neoprene Expansion Joint
- 8 Steel Retainer Details
- 9 Bar Splicer Details

DESIGN SPECIFICATIONS

1995 Seismic Retrofitting Manual for Highway Bridges



LOCATION SKETCH



Mary Coombe Bloxdorf
ILLINOIS STRUCTURAL NO. 4859
EXPIRES 11/30/10
DATE: 9/14/09

GENERAL PLAN
F.A.I. RTE. 255 ROADWAY B OVER
F.A.I. RTE. 55-70
STATION 819+87.76
STRUCTURE NO. 060-0211

CB Coombe-Bloxdorf P.C.
-CIVIL ENGINEERS-
-STRUCTURAL ENGINEERS-
-LAND SURVEYORS-
Design Firm License No. 184-002703

PROJECT NO. 05027-13
SCALE
DATE 4/24/09
DESIGN BY MCB
DRAWN BY CFC
CHECKED BY MCB

SHEET NO. 1

9 SHEETS

F.A.I. RTE.	SECTION	COUNTY	TOTAL SHEETS	SHEET NO.
70	60-(5,6,7)RS, 60-(6,7)BR	MADISON	185	106
CONTRACT NO. 76C56				
FED. ROAD DIST. NO. 7 ILLINOIS FED. AID PROJECT				

PLOT DATE = 09/14/2009
 PLOT SCALE = 1" = 20'-0"
 USER NAME = CFC