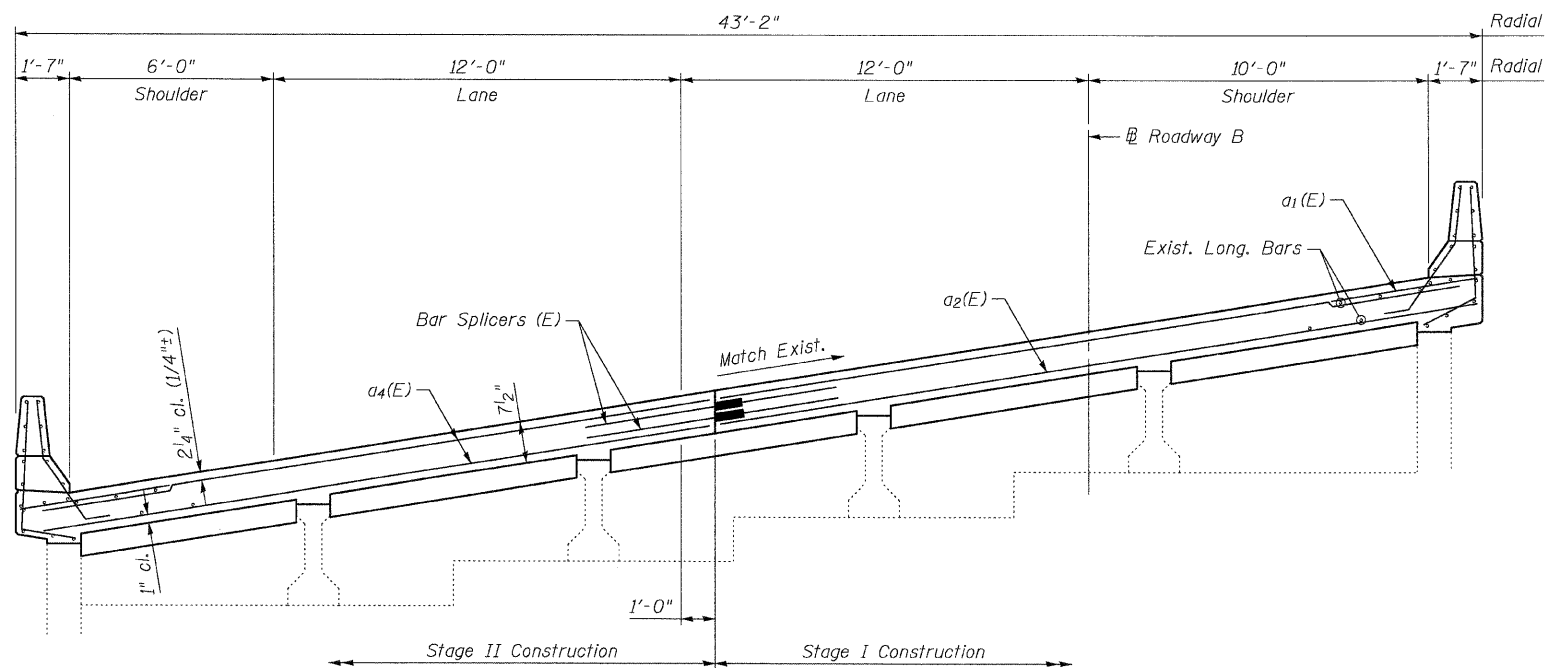
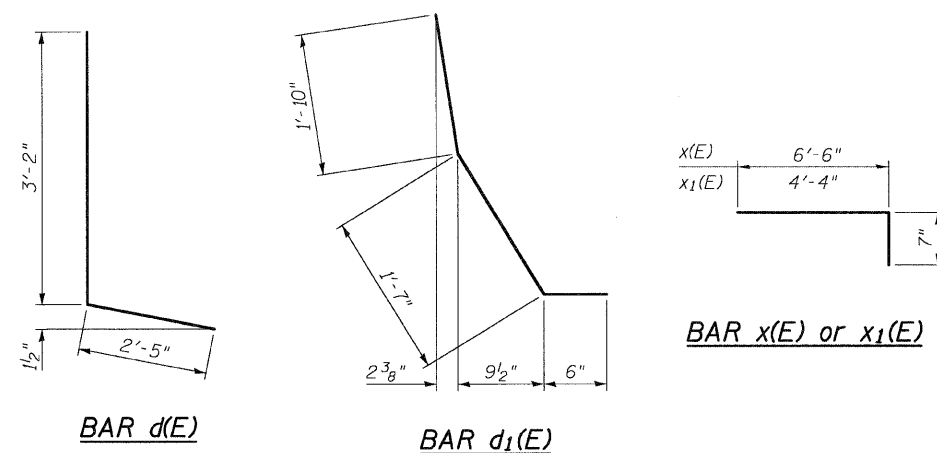


**CROSS SECTION THRU SPAN 3 AT N. ABUTMENT**  
 (Looking North Showing proposed reinforcement at North Abutment)

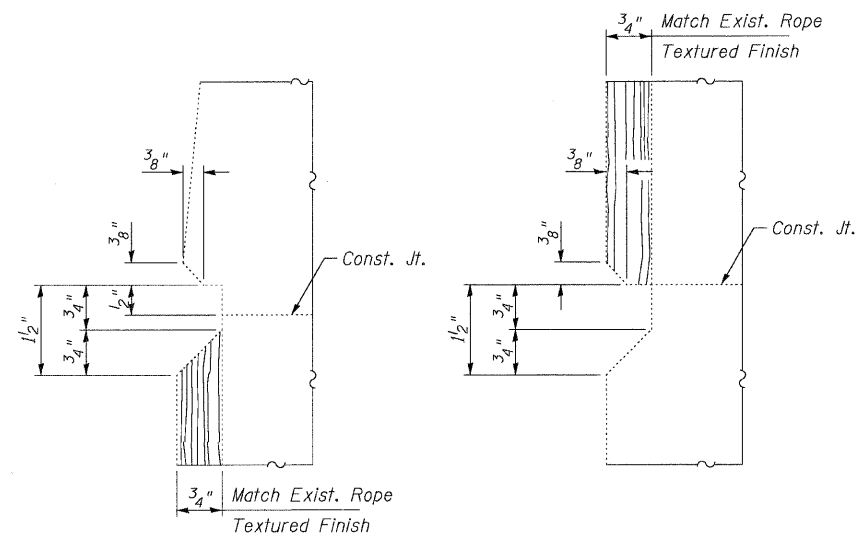


**CROSS SECTION THRU SPAN 4 AT N. ABUTMENT**  
 (Looking North Showing proposed reinforcement at North Abutment)



**BILL OF MATERIAL**

Bar	No.	Size	Length	Shape
a(E)	12	#6	28'-3"	—
a1(E)	20	#6	4'-0"	—
a2(E)	31	#8	36'-7"	—
a3(E)	12	#6	28'-1"	—
a4(E)	31	#8	33'-2"	—
d(E)	51	#4	5'-7"	J
d1(E)	51	#5	3'-11"	J
x(E)	80	#5	7'-1"	L
x1(E)	80	#5	4'-11"	L
Reinforcement Bars, Epoxy Coated		Pound	8310	
Concrete Superstructure		Cu. Yd.	46.6	
Bar Splicers		Each	37	



**NOTCH DETAIL**

**DETAIL B**

**SUPERSTRUCTURE DETAILS**  
**STRUCTURE NO. 060-0211**

PLOT DATE = 09/14/2009  
 PLOT SCALE = 1/4" = 1'-0"  
 USER NAME = CFC

<b>Coombe-Bloxdorf P.C.</b> - CIVIL ENGINEERS - - STRUCTURAL ENGINEERS - - LAND SURVEYORS - Design Firm License No. 184-002703	PROJECT NO. 05027-13 SCALE / / DATE / / DESIGN BY MCB DRAWN BY CFC CHECKED BY MCB	SHEET NO. 5 9 SHEETS	F.A.I. RTE. 70 SECTION 60-(5,6,7)RS, 60-(6,7)BR COUNTY MADISON CONTRACT NO. 76C56	TOTAL SHEETS 185 SHEET NO. 110
	FED. ROAD DIST. NO. ILLINOIS FED. AID PROJECT			