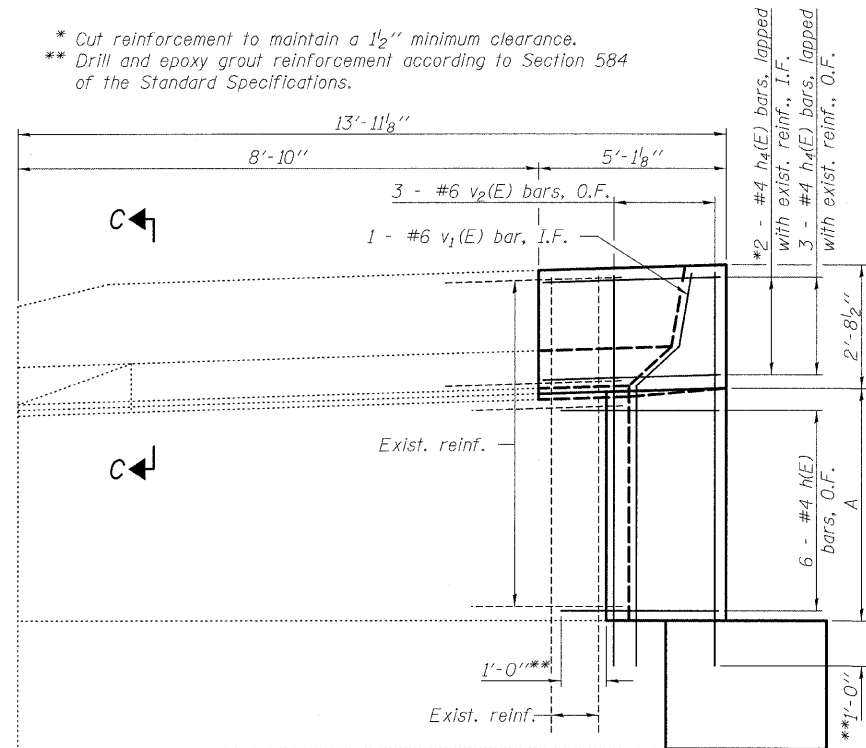
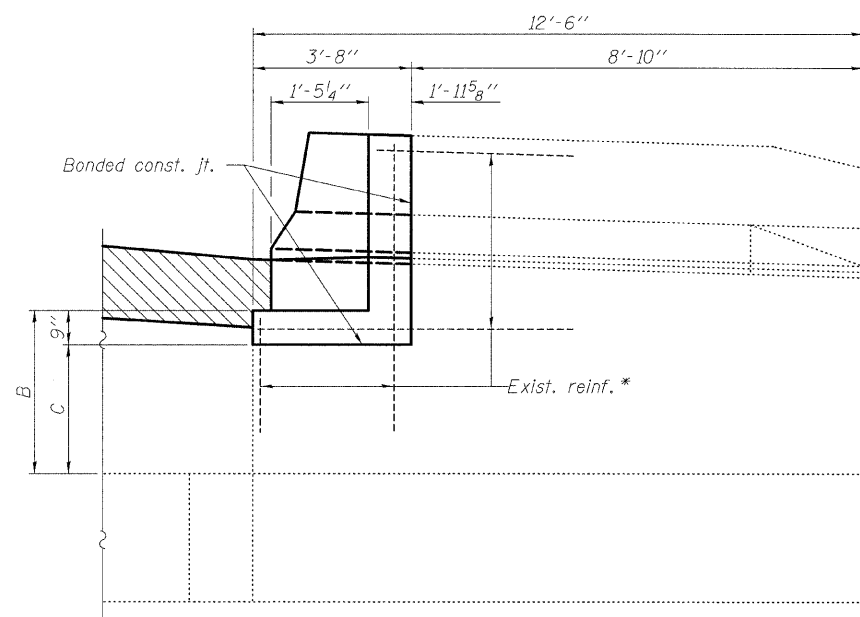


STATE OF ILLINOIS
DEPARTMENT OF TRANSPORTATION

* Cut reinforcement to maintain a 1/2" minimum clearance.
** Drill and epoxy grout reinforcement according to Section 584 of the Standard Specifications.



VIEW A-A

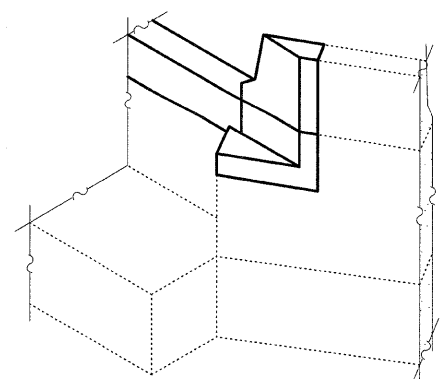


VIEW B-B

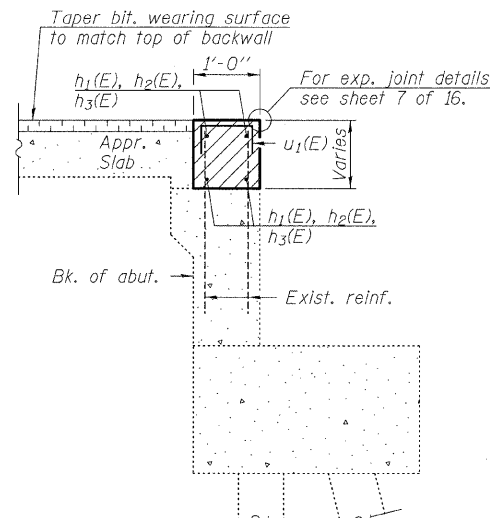
TABLE OF VARIABLE DIMENSIONS

	S.N. 060-0014		S.N. 060-0015	
	S. Abut.	N. Abut.	S. Abut.	N. Abut.
A	5'-0 3/8"	5'-0 5/8"	5'-2 1/8"	4'-11 7/8"
B	3'-6 3/8"	3'-6"	3'-5 3/4"	3'-8 1/8"
C	2'-9 3/8"	2'-9"	2'-8 3/4"	2'-11 1/8"

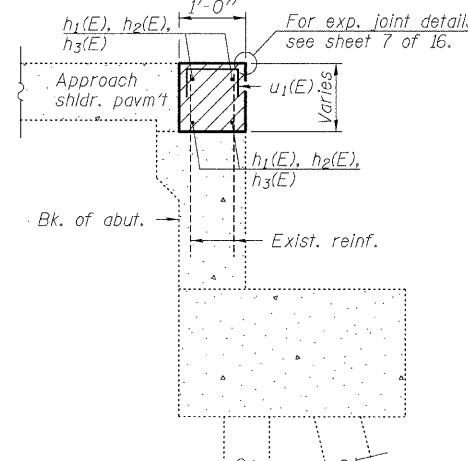
DESIGNED	EML
CHECKED	KLH
DRAWN	EML
CHECKED	KLH



ISOMETRIC - VIEW B-B

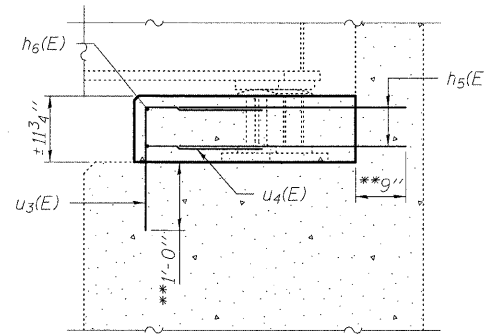


AT APPROACH SLAB

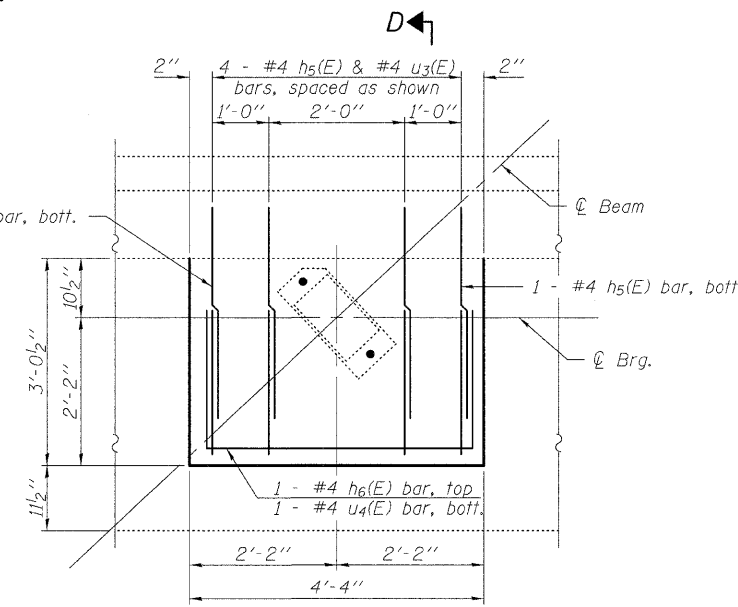


AT APPROACH SHOULDER

SECTION THRU ABUTMENT



SECTION D-D

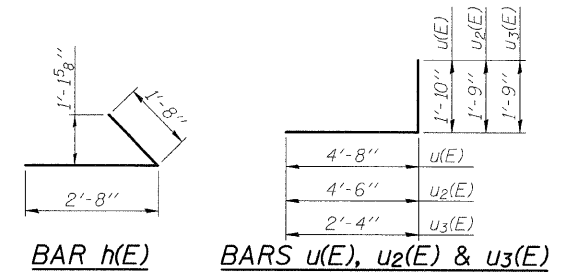


PLAN OF PEDESTAL

Notes:

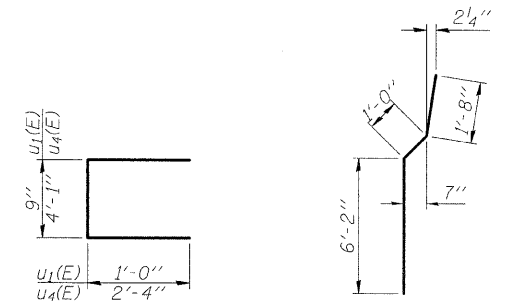
Existing reinforcement shall be cleaned and incorporated into the new construction. Cost included with Concrete Removal.
Hatched area to be poured after superstructure falsework has been removed. Quantity of concrete included with Concrete Superstructure.
Concrete Sealer shall be applied to the bearing seats.
Quantity of concrete in end post included with Concrete Superstructure on sheet 6 of 16.

For substructure Concrete Removal details, see sheet 5 of 16.
If there is difficulty placing the u3(E) bar due to the existing beam as shown, the Contractor is to adjust the bar spacing as necessary keeping it as close as possible to the original location.



BAR h(E)

BARS u(E), u2(E) & u3(E)



BARS u1(E) & u4(E)

BAR v1(E)

MINIMUM BAR LAP

#5 bar = 3'-0"

ABUTMENT
BILL OF MATERIAL
TWO STRUCTURES

Bar	No.	Size	Length	Shape
h(E)	24	#4	4'-4"	L
h1(E)	16	#5	27'-9"	—
h2(E)	8	#5	26'-3"	—
h3(E)	8	#5	29'-4"	—
h4(E)	20	#4	3'-2"	—
h5(E)	144	#4	3'-0"	—
h6(E)	24	#4	4'-1"	—
u(E)	12	#4	6'-6"	U
u1(E)	232	#5	2'-9"	U
u2(E)	12	#4	6'-3"	U
u3(E)	96	#4	4'-1"	U
u4(E)	24	#4	8'-9"	U
v(E)	20	#6	2'-6"	—
v1(E)	4	#6	8'-10"	—
v2(E)	12	#6	7'-7"	—
Concrete Removal		Cu. Yd.	2.6	
Structure Excavation		Cu. Yd.	13	
Concrete Structures		Cu. Yd.	16.8	
Reinforcement Bars, Epoxy Coated		Pound	2,840	
Concrete Sealer		Sq. Ft.	1,210	

For details of Bar Splicers, see sheet 16 of 16.

ABUTMENT DETAILS
STRUCTURE NO. 060-0014 (E.B.)
STRUCTURE NO. 060-0015 (W.B.)

HORNER & SHIFRIN, INC.
ENGINEERS

SHEET NO. 14	F.A.I. RTE. 70	SECTION 60-(6,7)BR	COUNTY MADISON	TOTAL SHEETS 185	SHEET NO. 142
16 SHEETS	CONTRACT NO. 76C56		ILLINOIS FED. AID PROJECT		