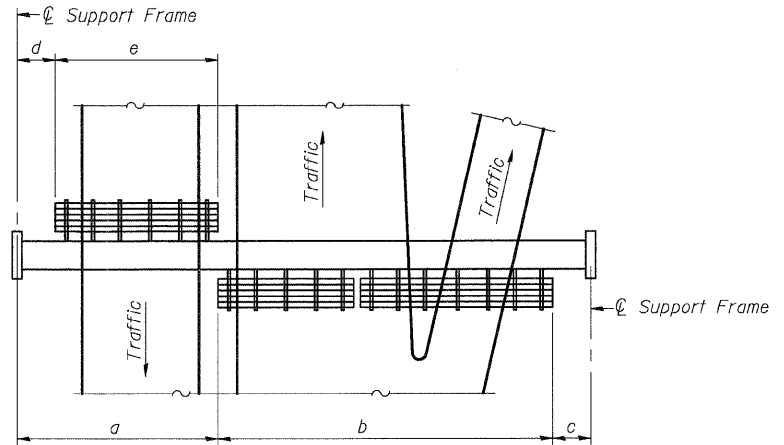


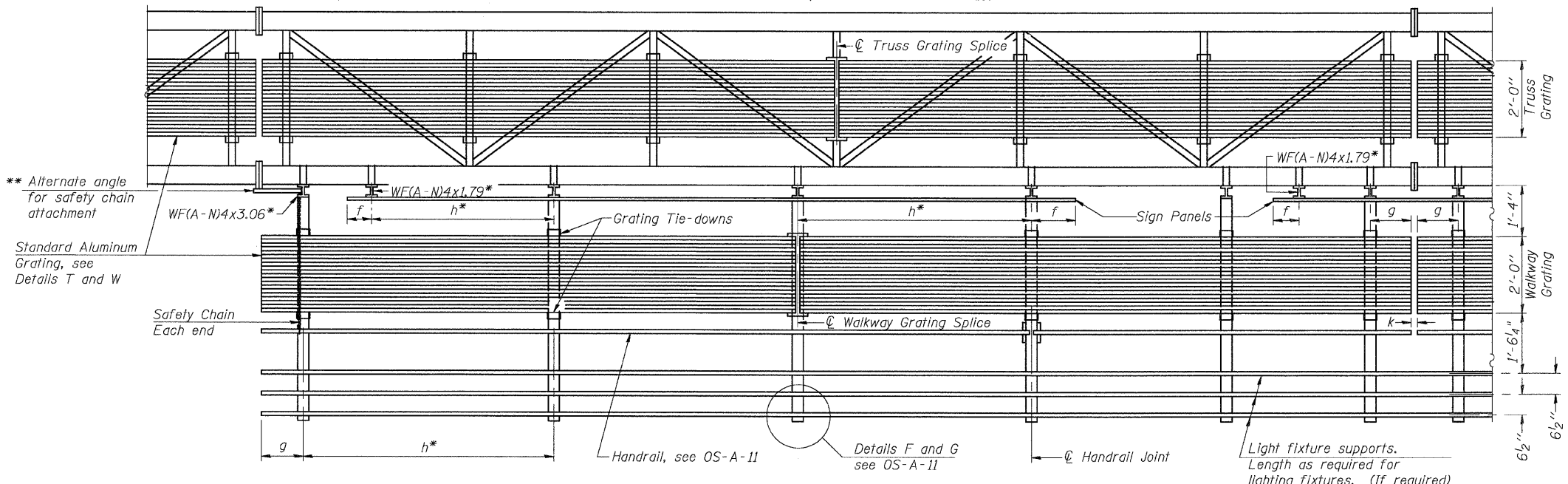
**TYPICAL FRONT ELEVATION**  
 With lights and handrail omitted for clarity.  
 For Section B-B, see Base Sheet OS-A-10.



**PLAN WALKWAY AND HANDRAIL SKETCH**  
 (Road plan beneath truss varies)

**BRACKET TABLE**

Sign Width		Number Brackets Required
Greater Than	Less Than or Equal To	
8'-0"	8'-0"	2
14'-0"	14'-0"	3
20'-0"	20'-0"	4
26'-0"	26'-0"	5
32'-0"	32'-0"	6



**SECTION A-A**

Handrail and walkway shall span a minimum of three brackets between splices and/or gap joints. Place all sign and walkway brackets as close to panel points as practical. Handrail joints, grating, and light support splices placed as needed.

Truss grating to facilitate inspection shall run full length (center to center of support frames) ±12" on overhead trusses. Cost of truss grating is included in "Overhead Sign Structure".

Notes:  
 \* Space walkway brackets WF(A-N)4x3.06 and sign brackets WF(A-N)4x1.79 for efficiency and within limits shown:  
 f = 12" maximum, 4" minimum (End of sign to center of nearest bracket)  
 g = 12" maximum, 4" minimum (End of walkway grating to center of nearest support bracket)  
 h = 6'-0" maximum (center to center of sign and/or walkway support brackets, WF(A-N)4x1.79 or WF(A-N)4x3.06)  
 k = 2" maximum gap between adjacent walkway grating sections and handrail ends  
 \*\* If walkway bracket at safety chain location is behind sign, add angle to bracket, see Alternate Safety Chain Attachment on Base Sheet OS-A-11.  
 For Details T and W, Section B-B and Grating Splice Details see Base Sheet OS-A-10.  
 For Handrail Details see Base Sheet OS-A-11.

NUMBER	REVISION	DATE

Structure Number	Station	a	b	c	d	e	Walkway Grating and Handrail Lengths
8S0601055R010.9	502+00	11'	47'	12'	-	-	47'
8S0601055L011.2	510+80	6'	68'	18'	-	-	68'
8S0601055L011.4	537+25	14'	35'	11'	-	-	35'

Walkway and Truss Grating width dimensions are nominal and may vary ±1/2" based on available standard widths.

OVERHEAD SIGN STRUCTURES ALUMINUM WALKWAY DETAILS				
F.A.I. ROUTE 70, SEC. 60-(5,6,7)RS, 60-(6,7)BR MADISON COUNTY				
F.A.I. RTE.	SECTION	COUNTY	TOTAL SHEETS	SHEET NO.
70	60-(5,6,7)RS, 60-(6,7)BR	MADISON	185	160
CONTRACT NO. 76C56				
FED. ROAD DIST. NO.		ILLINOIS FED. AID PROJECT		

SHEET NO. 16  
 19 SHEETS

**CB Coombe-Bloxdorf P.C.**  
 - CIVIL ENGINEERS -  
 - STRUCTURAL ENGINEERS -  
 - LAND SURVEYORS -  
 Design Firm License No. 184-002703

PROJECT NO. 05027-13  
 SCALE: / / /  
 DATE: / / /  
 DESIGN BY: / / /  
 DRAWN BY: / / /  
 CHECKED BY: / / /

OS-A-9 12-1-08

PLOT DATE = 09/14/2008  
 FILE NAME = 05027-13-05.dwg  
 PLOT SCALE = 1/8" = 1'-0"  
 USER NAME = CFC