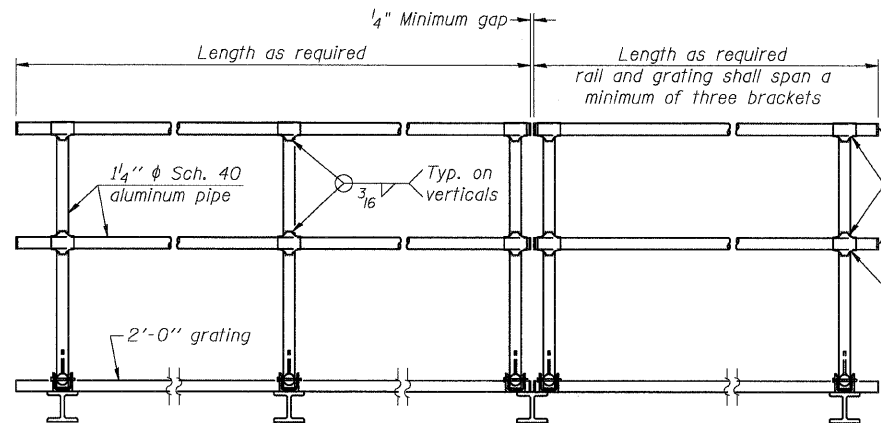


SIDE ELEVATION

(Showing safety chain w/o sign)

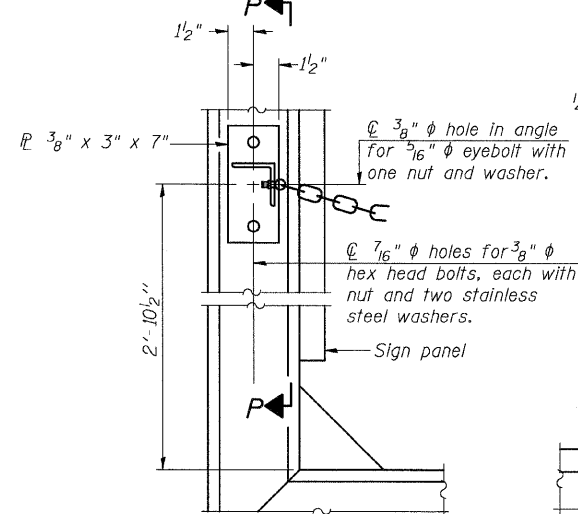


FRONT ELEVATION

HANDRAIL DETAILS

Handrail pipe shall be ASTM B241 or B429, Alloy 6063-T6 or Alloy 6061-T6.

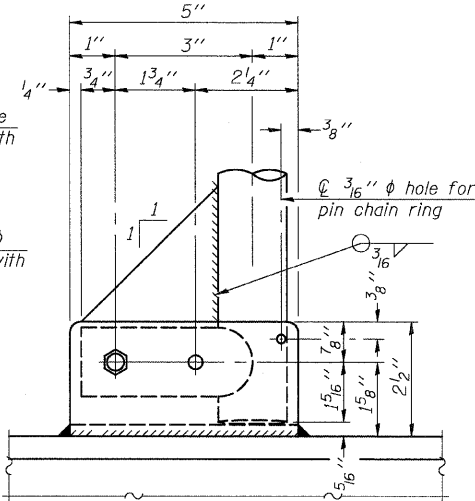
- ① Install standard force-fit end caps or weld 1/8" end plates with 1/8" c.f.w. and grind smooth. (All rail ends)
- ② Horizontal handrail member shall be continuous thru fitting. Provide 7/16" hole in fitting for 3/8" bolt. Field drill 1/16" hole in horizontal rail member. Provide locknut and two stainless steel washers for bolt. (Use 5/16" eyebolts in 1/16" holes on top rail at ends only.)



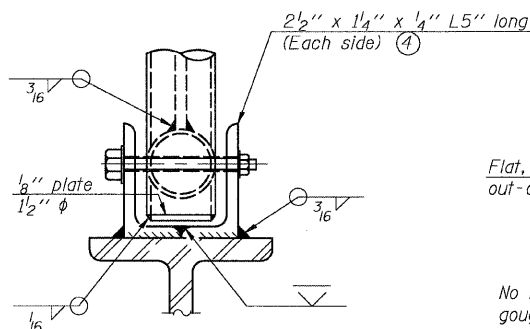
ALTERNATE SAFETY CHAIN ATTACHMENT

(With Sign Present)

Items not shown same as "Side Elevation" of "Handrail Details"

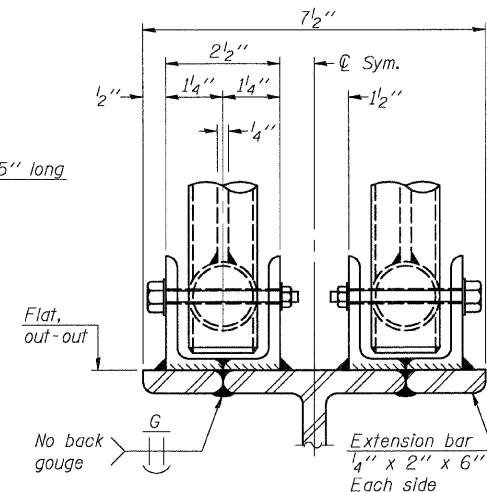


SIDE ELEVATION

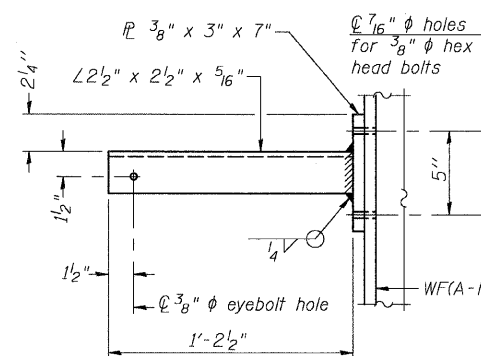


FRONT ELEVATION

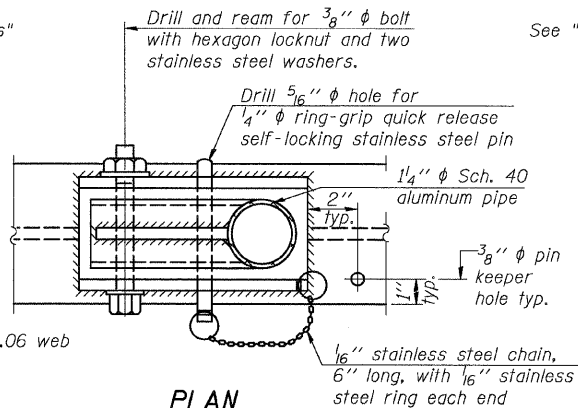
See "Elevation" at right for dimensions.



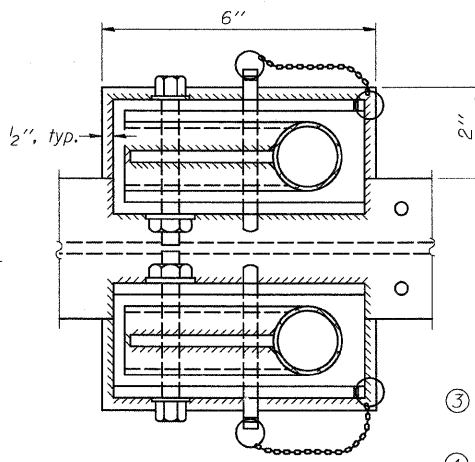
ELEVATION AT HANDRAIL JOINT



SECTION P-P

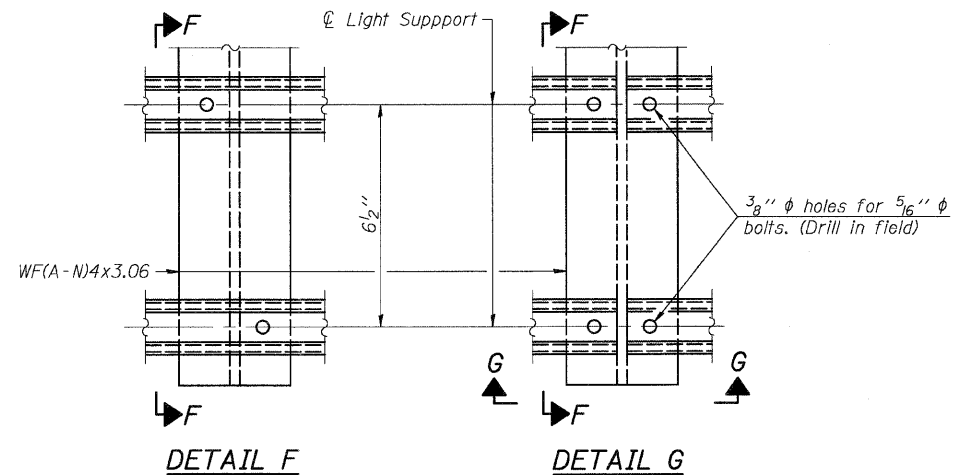


**PLAN
DETAIL E HANDRAIL HINGE**



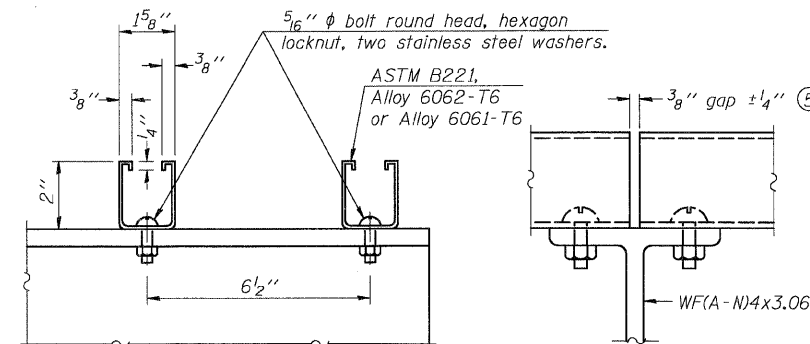
PLAN AT HANDRAIL JOINT

Details not shown same as "PLAN"



DETAIL F

DETAIL G

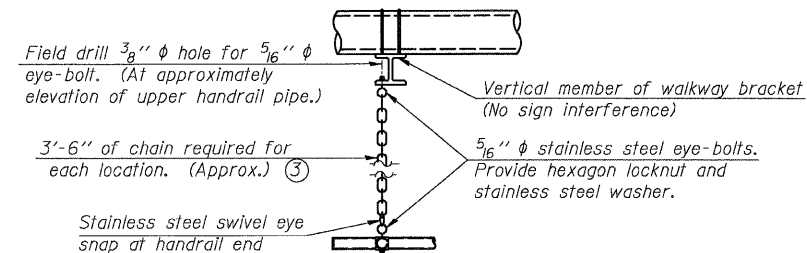


SECTION F-F

SECTION G-G

LIGHTING FIXTURE MOUNTS (IF REQUIRED)

- ⑤ Field cut ends of light support channels shall be free of burrs or hazardous projections and coated with zinc-rich primer or equivalent.



SAFETY CHAIN

One required for each end of each walkway.

Coombes-Bloxdorf P.C.
 - CIVIL ENGINEERS -
 - STRUCTURAL ENGINEERS -
 - LAND SURVEYORS -
 Design Firm License No. 184-002703

PROJECT NO. OS02T-13
 SCALE: / /
 DATE: / /
 DESIGN BY: / /
 DRAWN BY: / /
 CHECKED BY: / /

NUMBER	REVISION	DATE

- ③ 3/16" Type 304L stainless steel chain, approximately 12 links per foot.
- ④ Extrusions may be used in lieu of the details shown, with approval of the Engineer.

OVERHEAD SIGN STRUCTURES ALUMINUM HANDRAIL DETAILS				
F.A.I. ROUTE 70, SEC. 60-(5,6,7)RS, 60-(6,7)BR MADISON COUNTY				
SHEET NO.	F.A.I. RTE.	SECTION	COUNTY	TOTAL SHEETS
18	70	60-(5,6,7)RS, 60-(6,7)BR	MADISON	185
19 SHEETS	CONTRACT NO. 76C56			162
FED. ROAD DIST. NO.		ILLINOIS	FED. AID PROJECT	