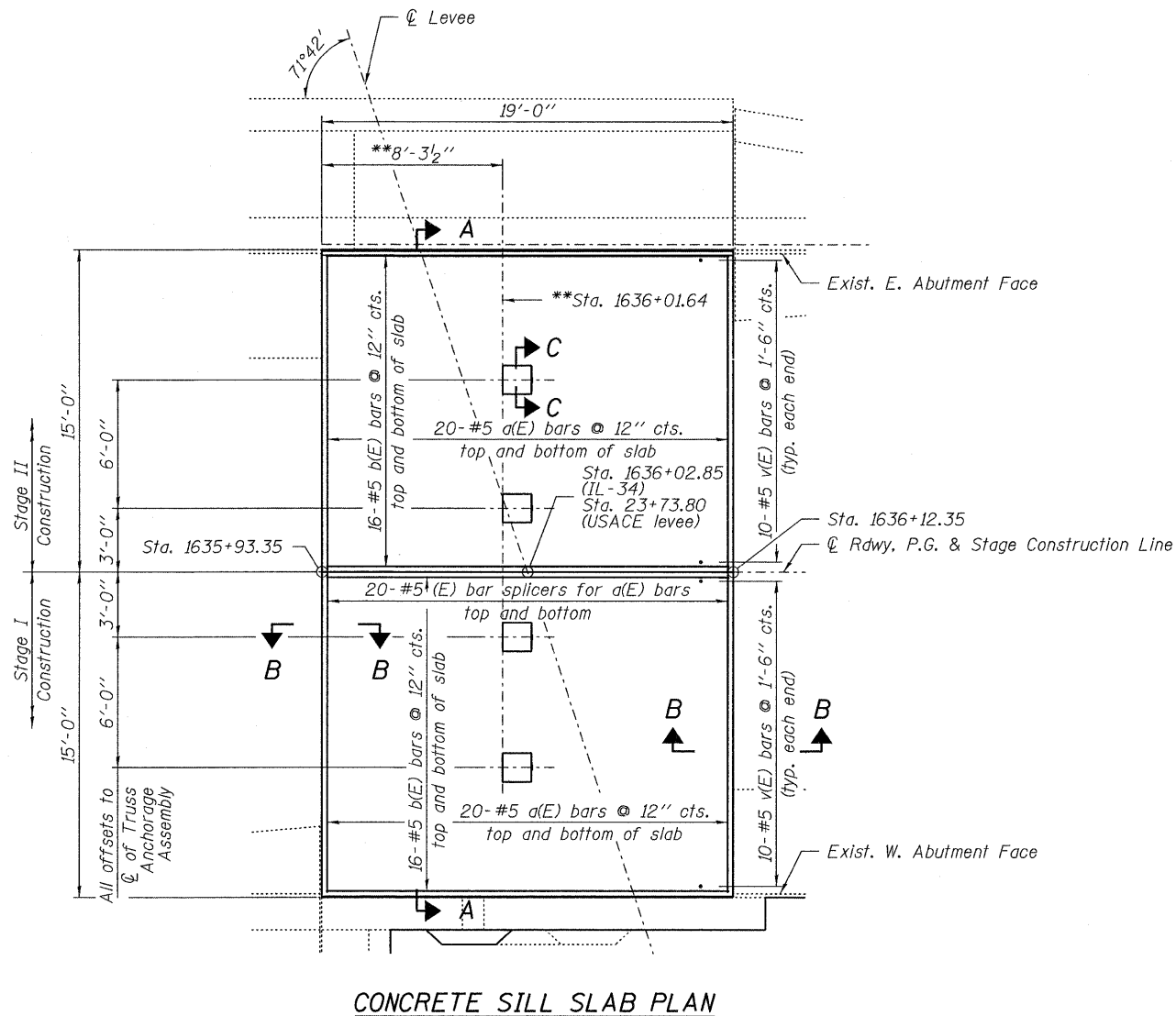
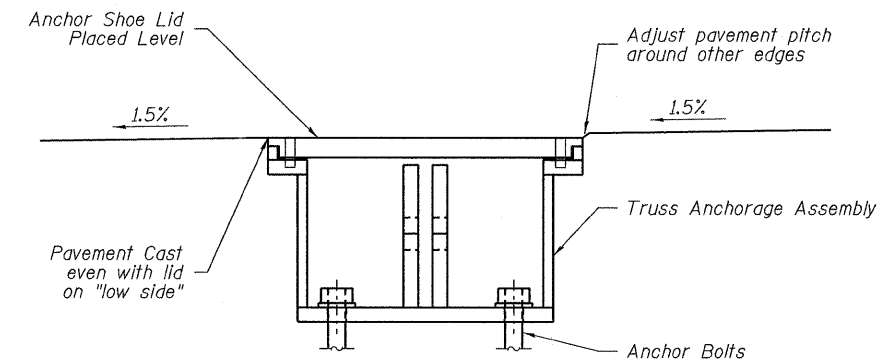


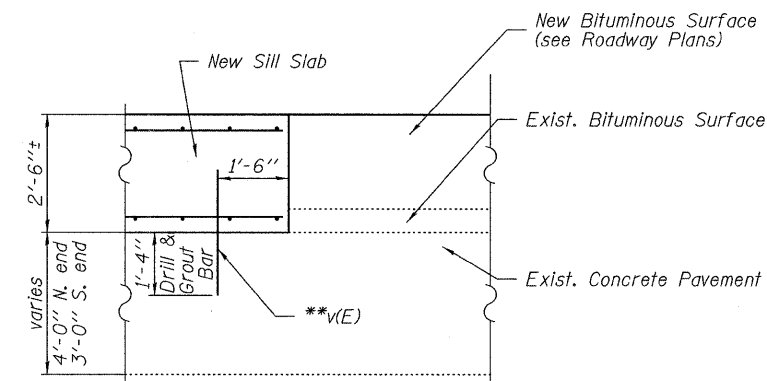
**\*\* Note:**  
The location of the Truss Anchorage Assemblies is to be verified by the Contractor prior to pouring the Concrete Sill Slab. Verify the location by running a string line from the base of the Abutment Wall Recess at Point-X (see sheet 5 of 14) to the same point at the same elevation on the opposite wall. The "River Side" (see sheet 7 of 14) edge of the Assembly will be placed at the indicated offsets from the  $\text{CL}$  of pavement at  $4\frac{3}{4}$ " North of the string line. This should equate to Sta. 1636+01.170 as shown on the plans.



**CONCRETE SILL SLAB PLAN**



**SECTION C-C**  
Truss Anchorage Assembly Placement  
(See sheet 7 of 14 for Truss Anchorage Assembly details)



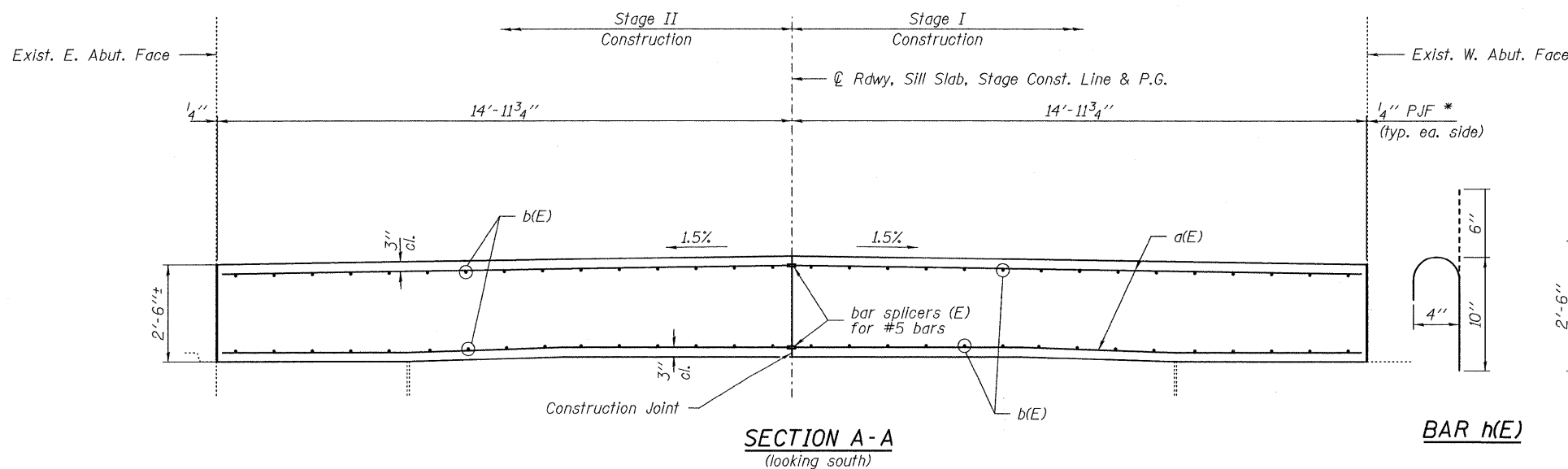
**SECTION B-B**

**BILL OF MATERIAL - SILL SLAB, WALL & VAULT**

BAR	NO.	SIZE	LENGTH	SHAPE		
a(E)	80	#5	14'-9"	—		
a <sub>1</sub> (E)	15	#4	5'-9"	—		
b(E)	64	#5	18'-8"	—		
b <sub>1</sub> (E)	8	#4	11'-5"	—		
b <sub>2</sub> (E)	4	#4	3'-6"	—		
h(E)	6	#4	1'-4"	C		
h <sub>1</sub> (E)	4	#4	5'-0"	┌		
v(E)	40	#5	2'-8"	—		
Concrete Structures					Cu. Yd.	68.0
Reinforcement Bars, Epoxy Coated					Pound	2,740
Door & Frame					Each	1

Note:  
\* Cost of  $\frac{1}{4}$ " PJF included with contract unit price for "Concrete Structures".  
For Truss Anchorage Assembly details see sheet 7 of 14.  
\*\* Cost of drilling and grouting bars in existing concrete pavement included in contract unit price for "Reinforcing Bars, Epoxy Coated".

**CONCRETE SILL SLAB, VAULT & WALLS MOVABLE LEVEE CLOSURE STRUCTURE**



**SECTION A-A**  
(looking south)

**BAR h(E)**

**BAR h<sub>1</sub>(E)**

DESIGNED - T.P.L.
CHECKED - M.D.C., S.M.S.
DRAWN - P.J.L.
CHECKED - J.L.B.

**HAMPTON, LENZINI & RENWICK, INC.**  
CIVIL & STRUCTURAL ENGINEERS  
LAND SURVEYORS  
**HLR**  
3085 STEVENSON DRIVE, SUITE 201  
SPRINGFIELD, ILLINOIS 62703  
(217) 546-3400  
PROJECT NUMBER: 08.0214.130 DATE: 10/01/09

SHEET NO. 4  
14 SHEETS

FAP	SECTION	COUNTY	TOTAL SHEETS	SHEET NO.
869	(105)RS-2	SALINE	82	39
IL-34 HARRISBURG		CONTRACT NO. 78079		
FED. ROAD DIST. NO.	ILLINOIS	FED. AID PROJECT		