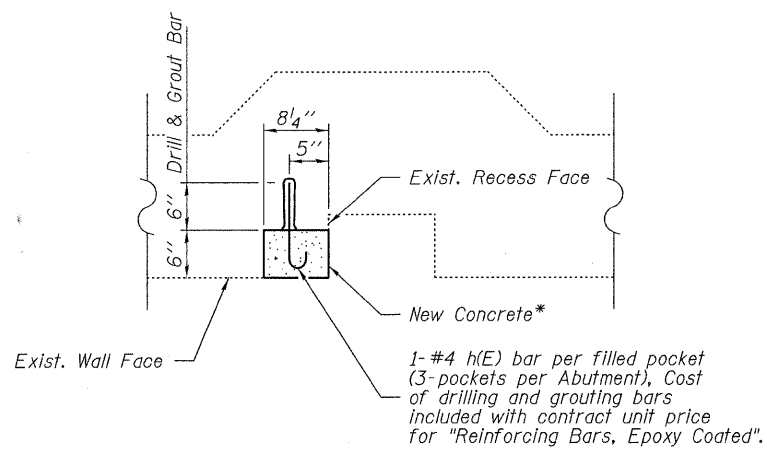


EXTERIOR WEST WALL ELEVATION
 (East Wall similar except no door)




SECTION A-A

- Notes:**
- See sheet 4 of 14 for Bill of Material.
 - For additional Vault Modification details see sheet 6 of 14.
 - For New Door and Frame & 1/2"φ Drain with Screen details see Special Provisions.
 - * Clean and Fill Pockets with concrete to match existing wall and recess faces (Cost included with contract unit price for "Concrete Structures") (Typical each Wall).
 - ** Cost of capped inserts included with contract unit price for "Concrete Structures".
 - The Existing Bottom Seal Trench will be emptied of all existing fill material and cleaned with a high pressure water jet prior to placing the new Concrete Sill Slab. Cost of work included with contract unit price for "Hot Mix Asphalt Surface Removal, 6\"".
 - The top surface of the Existing Concrete Pavement located within the limits of the new Concrete Sill Slab shall be roughened and cleaned prior to placing the new Concrete Sill Slab. Roughening of the top surface may be by mechanical or high pressure water jet to produce a minimum 1/4" surface roughness profile. Cost of roughening and cleaning the Existing concrete pavement included with contract unit price for "Concrete Structures".

| |
|--------------------------|
| DESIGNED - T.P.L. |
| CHECKED - M.D.C., S.M.S. |
| DRAWN - P.J.L. |
| CHECKED - J.L.B. |

**SILL SLAB, WALL &
 VAULT MODIFICATION PLAN
 MOVABLE LEVEE CLOSURE STRUCTURE**

| | | | | | | |
|---|----------------|---------------------|-----------|--------------------|--------------|-----------|
| HAMPTON, LENZINI & RENWICK, INC. CIVIL & STRUCTURAL ENGINEERS LAND SURVEYORS  3085 STEVENSON DRIVE, SUITE 201 SPRINGFIELD, ILLINOIS 62703 (217) 546-3400 | SHEET NO. 5 | FAP | SECTION | COUNTY | TOTAL SHEETS | SHEET NO. |
| | 14 SHEETS | 869 | (105)RS-2 | SALINE | 82 | 40 |
| PROJECT NUMBER: 08.0214.130 | DATE: 10/01/09 | IL-34 HARRISBURG | | CONTRACT NO. 78079 | | |
| | | FED. ROAD DIST. NO. | ILLINOIS | FED. AID PROJECT | | |