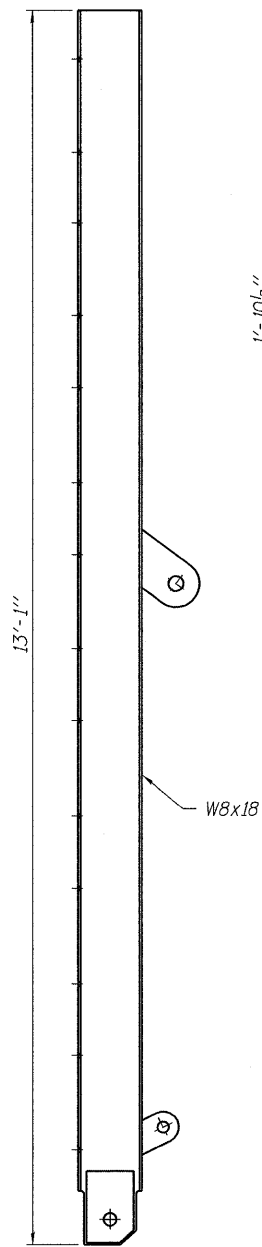
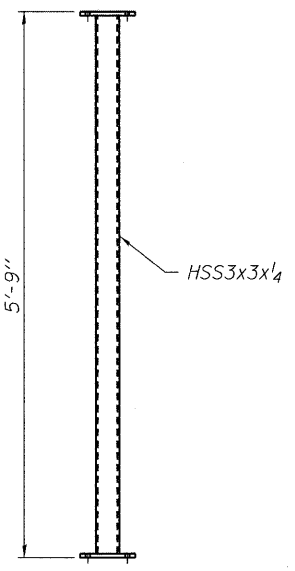


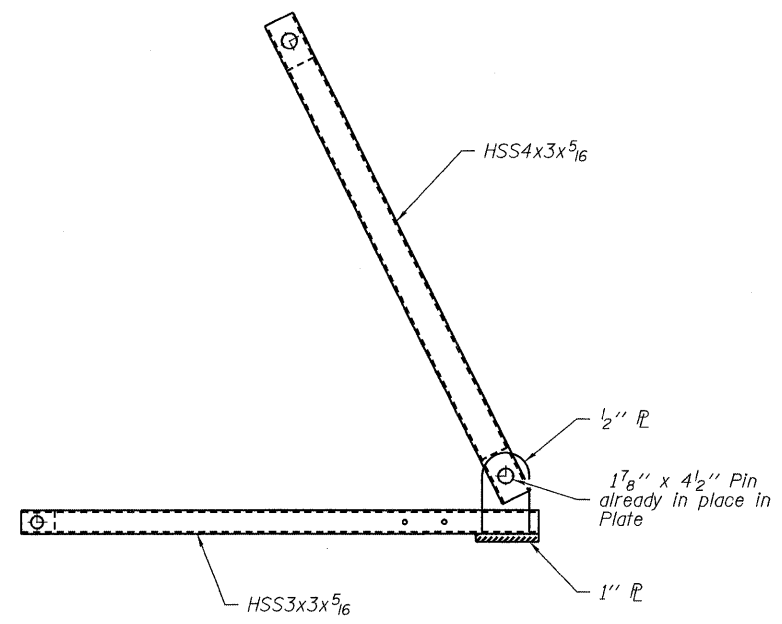
**WALL PANEL SUPPORT
ANGLE ("A" & "F")**



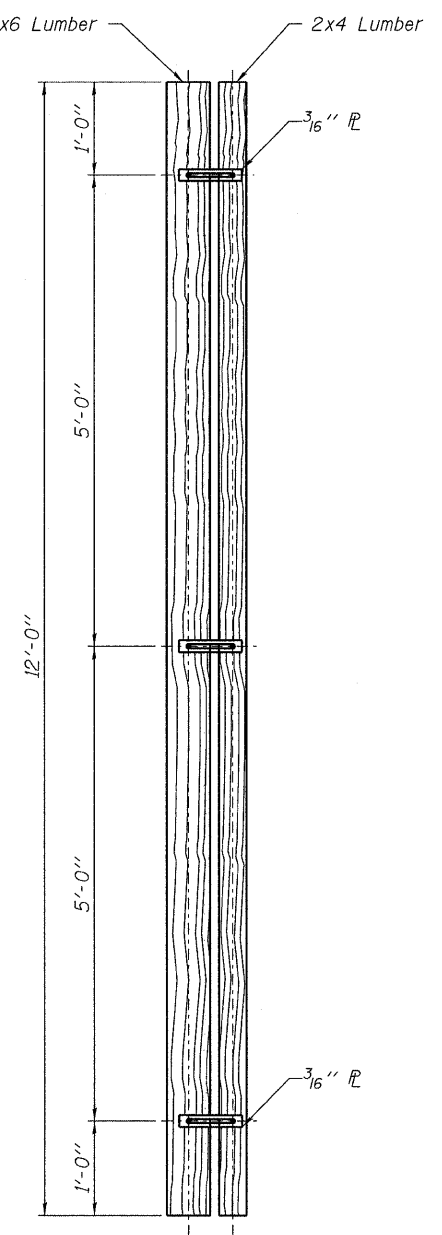
**MAIN TRUSS
BEAM ("B" - "E")**



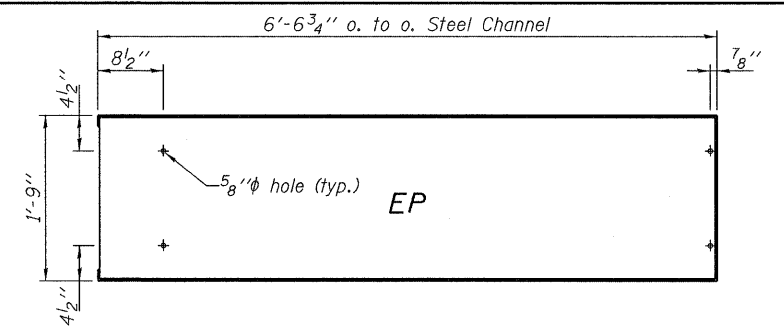
**TRUSS TRANSVERSE
BRACE ("TTB")**



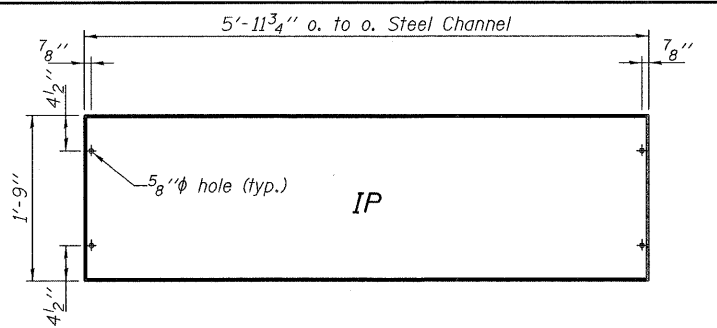
**SCISSOR TRUSS
SECTION ("STS")**



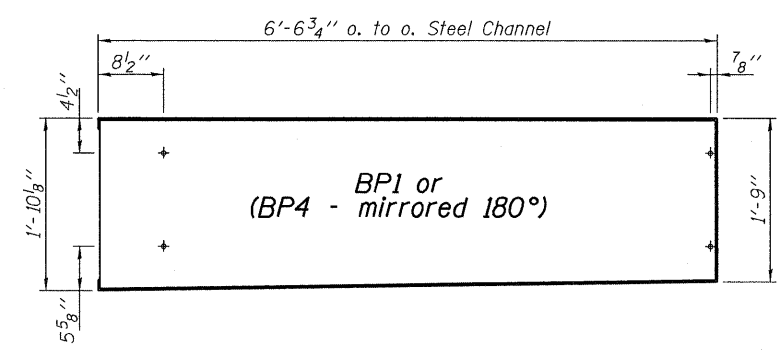
EDGE SEALING BOARD



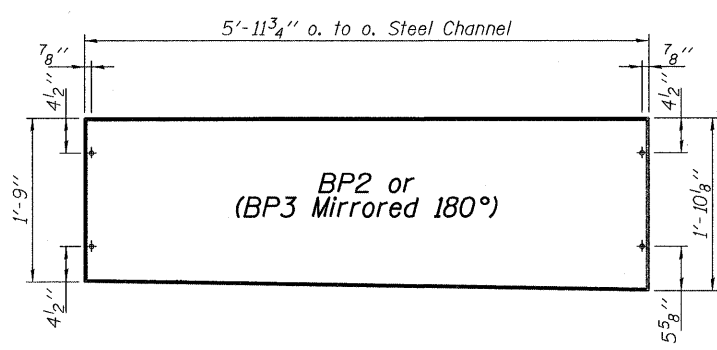
END WALL PANEL ("EP")



INTERIOR WALL PANEL ("IP")



BOTTOM WALL PANEL ("BP1" & "BP2")



BOTTOM WALL PANEL ("BP3" & "BP4")

DESIGNED - T.P.L.
CHECKED - M.D.C., S.M.S.
DRAWN - P.J.L.
CHECKED - J.L.B.

**ASSEMBLY INSTRUCTIONS
CLOSURE WALL MEMBER
IDENTIFICATION SHEET
MOVABLE LEVEE CLOSURE STRUCTURE**

HAMPTON, LENZINI & RENWICK, INC. CIVIL & STRUCTURAL ENGINEERS LAND SURVEYORS 3085 STEVENSON DRIVE, SUITE 201 SPRINGFIELD, ILLINOIS 62703 (217) 546-3400 PROJECT NUMBER: 08.0214.130 DATE: 10/01/09	SHEET NO. 1	FAP	SECTION	COUNTY	TOTAL SHEETS	SHEET NO.
	8 SHEETS	869	(105)RS-2	SALINE	82	50
		IL-34 HARRISBURG		CONTRACT NO. 78079		
	FED. ROAD DIST. NO.		ILLINOIS		FED. AID PROJECT	