

F.A.P. RTE.	SECTION	COUNTY	TOTAL SHEETS	SHEET NO.
869	101B-1	FRANKLIN	40	1
FED. ROAD DIST. NO.		ILLINOIS CONTRACT NO. 78086		

*40-1=39

D-99-055-08

STATE OF ILLINOIS
DEPARTMENT OF TRANSPORTATION
DIVISION OF HIGHWAYS

**PROPOSED
HIGHWAY PLANS**

FAP ROUTE 869 (IL 34)
SECTION 101B-1
PROJECT: *ESP-0869(036)*
FRANKLIN COUNTY
C-99-073-08



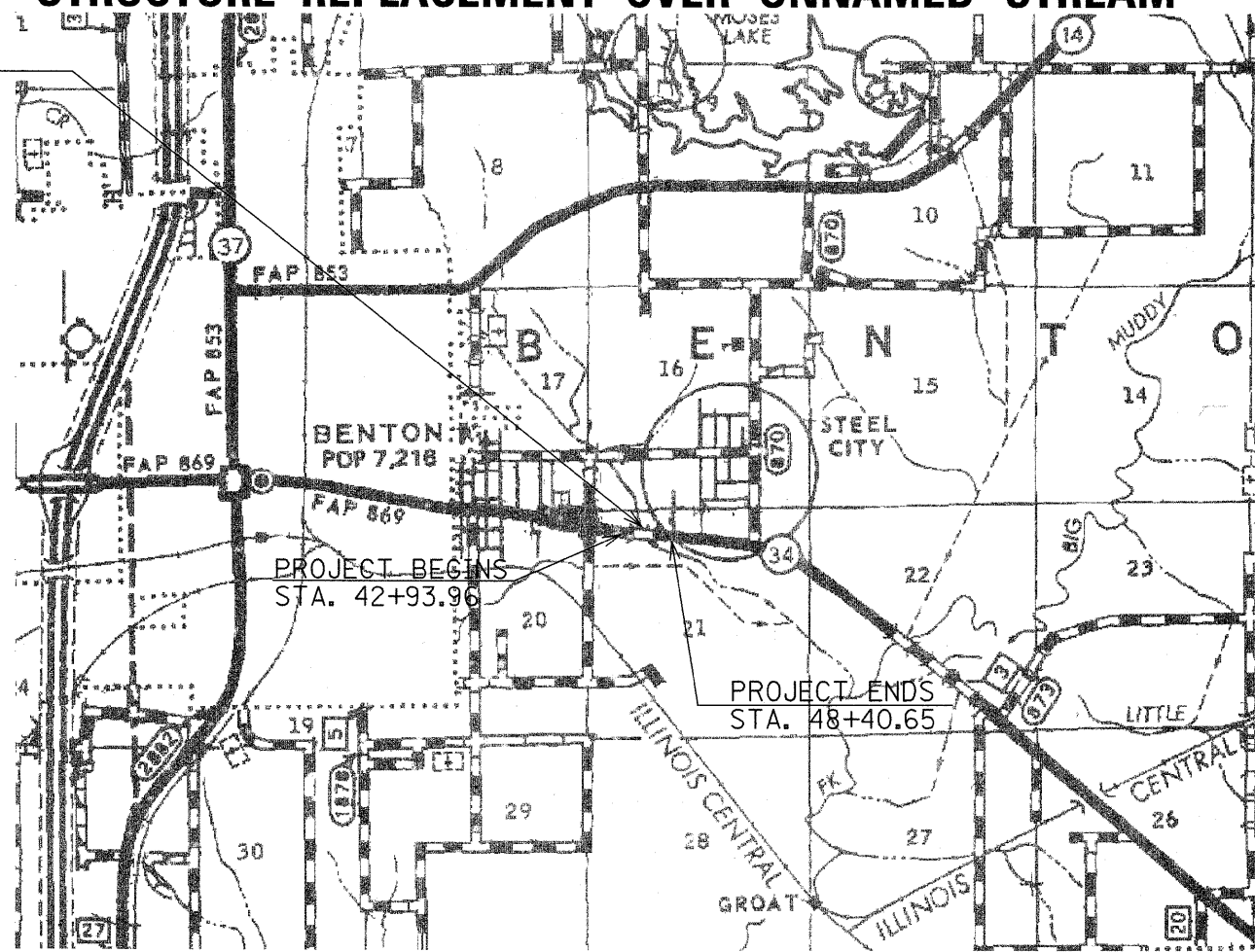
FOR INDEX OF SHEETS, SEE SHEET NO. 2
FOR SUMMARY OF QUANTITIES, SEE SHEET NO. 3

TRAFFIC DATA:
2007 ADT FOR FAP 869 (IL 34)
4,190 WITH 6.7 % TRUCKS

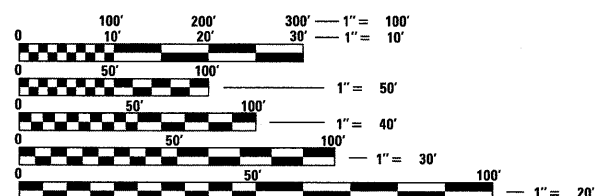
STRUCTURE REPLACEMENT OVER UNNAMED STREAM

PROPOSED BRIDGE ON IL 34
OVER UNNAMED STREAM
STRUCTURE NO. 028-0084
OVER UNNAMED STREAM
STRUCTURE C STATION 45+65.88
SINGLE SPAN-STEEL BEAM BRIDGE
73'-0" BK TO BK ABUTS: 25° SKEW
EXISTING STRUCTURE #: 028-0042

TOWNSHIPS: BENTON



John R. Cull
9-16-09



FULL SIZE PLANS HAVE BEEN PREPARED USING STANDARD ENGINEERING SCALES. REDUCED SIZED PLANS WILL NOT CONFORM TO STANDARD SCALES. IN MAKING MEASUREMENTS ON REDUCED PLANS, THE ABOVE SCALES MAY BE USED.

J.U.L.I.E.
JOINT UTILITY LOCATION INFORMATION FOR EXCAVATION
1-800-892-0123
OR 811

GEOTECH
ENGINEERING & TESTING, INC.
601 NORTH 4th STREET MURRAY, KENTUCKY 42071 • 500 SOUTH 17th STREET PADUCAH, KENTUCKY 42003 • 403 NORTH COURT STREET MARION, ILLINOIS 62959
PHONE - 270.753.7307 • PHONE - 270.443.1955 • PHONE - 618.987.9190
WWW.GEOTECHENGINEERS.NET COPYRIGHT © 2009 - GEOTECH ENGINEERING & TESTING, INC.

STATE OF ILLINOIS
DEPARTMENT OF TRANSPORTATION
DIVISION OF HIGHWAYS

SUBMITTED *Oct 13* 2009

Mary C. Davis
DEPUTY DIRECTOR OF HIGHWAYS, REGION ENGINEER

December 4, 2009
Charles J. Ingersoll
ENGINEER OF DESIGN AND ENVIRONMENT

December 4, 2009
Christine M. Reed
DIRECTOR OF HIGHWAYS, CHIEF ENGINEER

**PRINTED BY THE AUTHORITY
OF THE STATE OF ILLINOIS**

FAP RTE 869 (IL 34):
GROSS LENGTH OF PROJECT : 546.69 FT. = .10 MILES
SN 028-0084
ROADWAY LENGTH = 473.69 FT
BRIDGE LENGTH = 73 FT
NET LENGTH OF PROJECT = 546.69 FT

APPROX. SCALE
1" = 1500'

PROJECT ENGINEER: DAVID PICHE (618) 549-2171

CONTRACT NO. 78086