

STATE OF ILLINOIS
DEPARTMENT OF TRANSPORTATION

GENERAL NOTES

Fasteners shall be AASHTO M164 Type 1, mechanically galvanized bolts. Bolts 7/8 in. ϕ , holes 1 1/8 in. ϕ , unless otherwise noted.

Calculated weight of Structural Steel = 58450 lbs (AASHTO M270, Grade 50)
= 3580 lbs (AASHTO M270, Grade 36)

No field welding is permitted except as specified in the contract documents.

Reinforcement bars shall conform to the requirements of ASTM A 706 Gr 60. See Special Provisions.

Reinforcement bars designated (E) shall be epoxy coated.

The Inorganic Zinc Rich Primer / Acrylic / Acrylic Paint System shall be used for shop and field painting of new structural steel except where otherwise noted. The color of the final finish coat for all interior steel surfaces shall be gray, Munsell No. 5B 7/1. The color of the final finish coat for the exterior and bottom flange of the fascia beams shall be Interstate Green, Munsell No. 7.5G 4/8. See Special Provision for "Cleaning and Painting New Metal Structures".

Layout of slope protection system may be varied in the field to suit ground conditions as directed by the Engineer.

Slipforming of the parapet is not allowed.

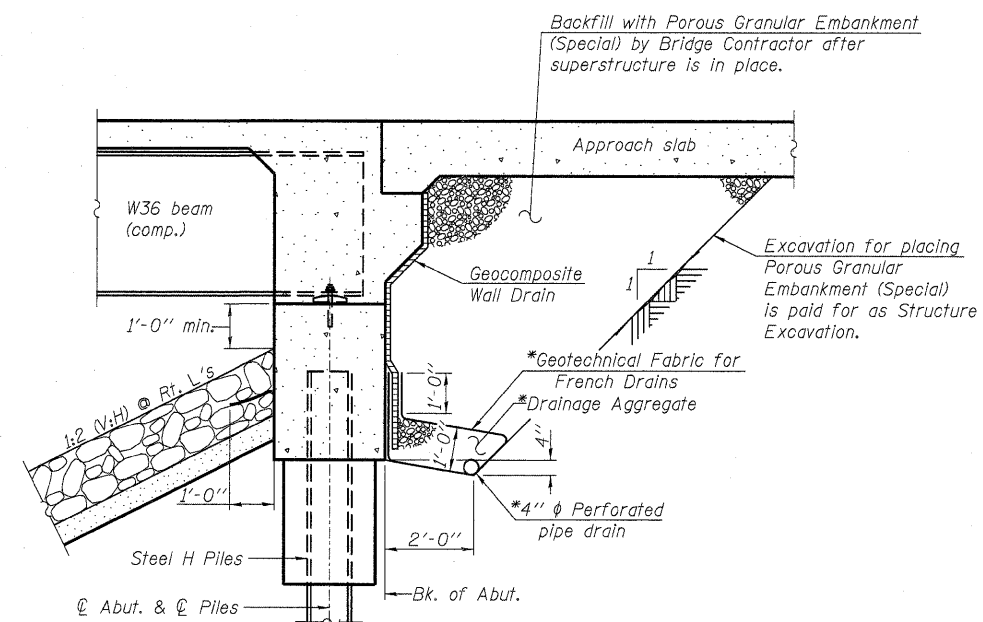
The Contractor shall drive test piles to 110% of the nominal required bearing specified in production locations at substructures specified or approved by the Engineer before ordering the remainder of piles.

The SSPC QP1 Painting Contractor Certification is required for this contract.

TOTAL BILL OF MATERIAL

ITEM	UNIT	SUPER	SUB	TOTAL
Porous Granular Embankment, Special	Cu. Yd.	-	147	147
Stone Riprap, Class A3	Sq. Yd.	-	20	20
Stone Riprap, Class A4	Sq. Yd.	-	767	767
Filter Fabric	Sq. Yd.	-	787	787
** Protective Coat	Sq. Yd.	626	-	626
Removal of Existing Structures	Each	-	-	1
Structure Excavation	Cu. Yd.	-	249.0	249.0
Concrete Structures	Cu. Yd.	-	63.4	63.4
Concrete Superstructure	Cu. Yd.	237.6	-	237.6
** Bridge Deck Grooving	Sq. Yd.	505	-	505
Concrete Encasement	Cu. Yd.	-	4.2	4.2
Furnishing and Erecting Structural Steel	Lump Sum	1	-	1
Stud Shear Connectors	Each	1278	-	1278
Reinforcement Bars, Epoxy Coated	Pound	50980	12650	63630
Bar Splicers	Each	466	108	574
Furnishing Steel Piles HP12x63	Foot	-	385	385
Driving Piles	Foot	-	385	385
Test Pile Steel HP12x63	Each	-	2	2
Name Plates	Each	1	-	1
Anchor Bolts, 1"	Each	-	24	24
Geocomposite Wall Drain	Sq. Yd.	-	94	94
Pipe Underdrains for Structures 4"	Foot	-	172	172
Asbestos Bearing Pad Removal	Each	-	8	8
Temporary Soil Retention System	Sq. Ft.	-	492	492

** Includes Approach Slab



SECTION THRU INTEGRAL ABUTMENT
(Horiz. dim. @ Rt. L's)

*Included in the cost of Pipe Underdrains for Structures.

Note:
All drainage system components shall extend to 2'-0" from the end of each wingwall except an outlet pipe shall extend until intersecting with the side slopes. The pipes shall drain into concrete headwalls. (See Article 601.05 of the Standard Specifications and Highway Standard 601101).

STATION 45+65.88
BUILT 20 BY
STATE OF ILLINOIS
F.A.P. RT. 869 SEC 101B-1
LOADING HL-93
STRUCTURE NO. 028-0084

NAME PLATE
See Std. 515001

GENERAL NOTES & DETAILS
STRUCTURE NO. 028-0084

	SHEET NO. 2	F.A.P. RTE.	SECTION	COUNTY	TOTAL SHEETS	SHEET NO.	
	17 SHEETS	869	101B-1	FRANKLIN	40	17	
		CONTRACT NO. 78086					
		FED. ROAD DIST. NO.		ILLINOIS	FED. AID PROJECT		