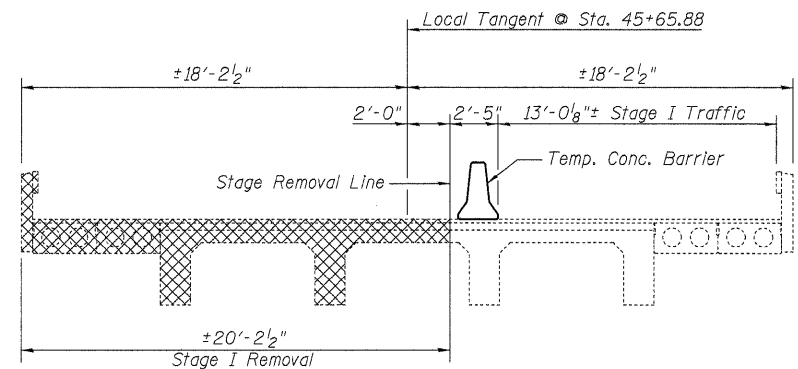
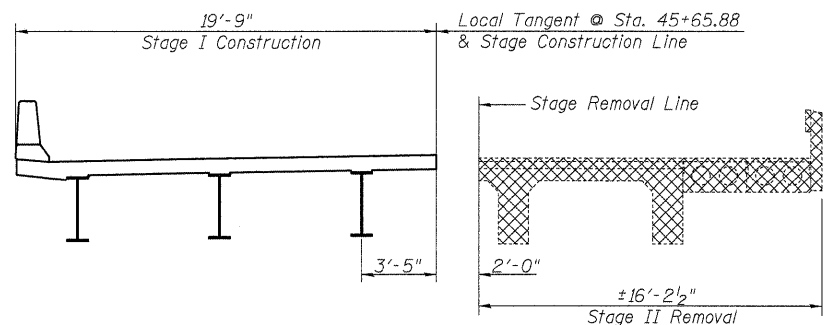


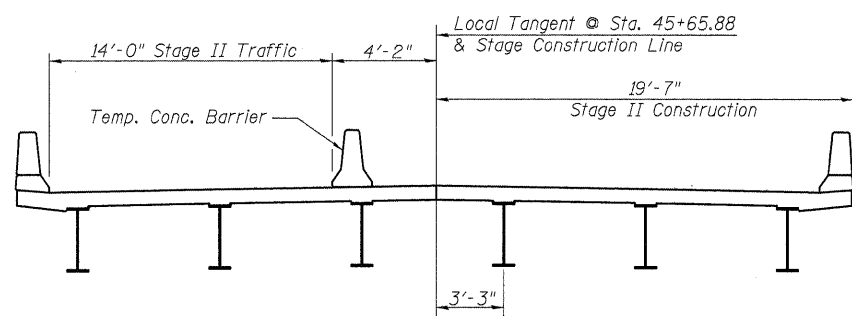
STATE OF ILLINOIS  
DEPARTMENT OF TRANSPORTATION



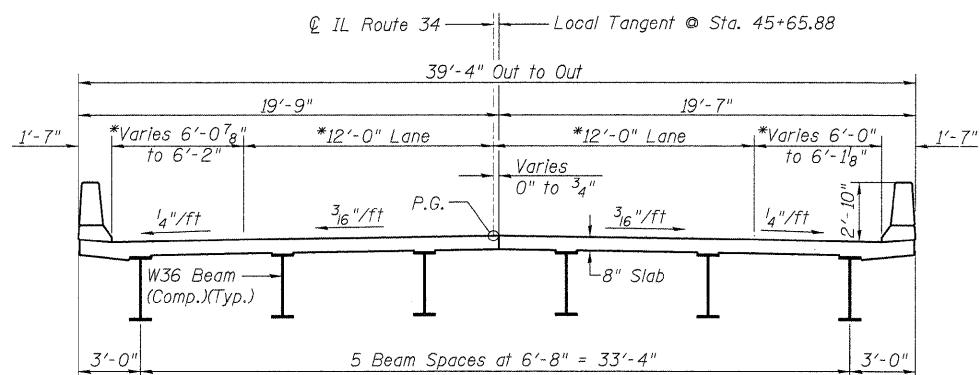
**STAGE I REMOVAL & TRAFFIC**



**STAGE I CONSTRUCTION & STAGE II REMOVAL**



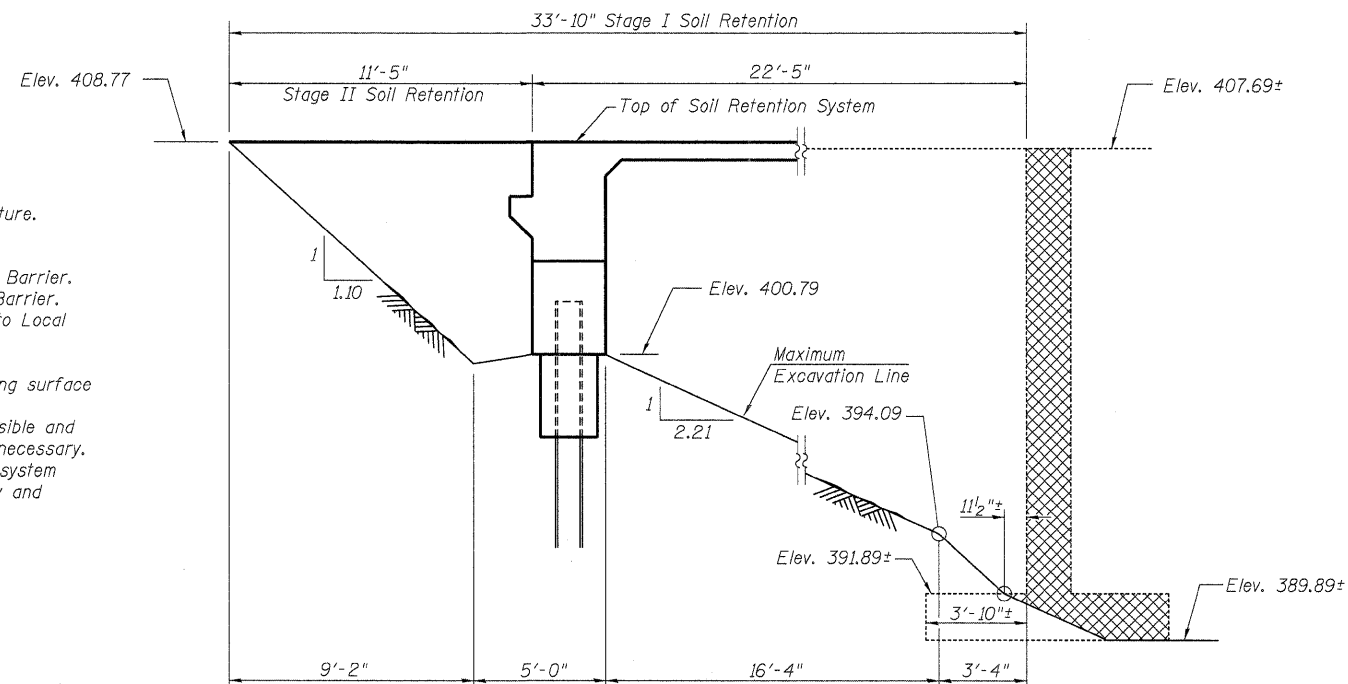
**STAGE II CONSTRUCTION & TRAFFIC**



**PROPOSED CROSS SECTION**

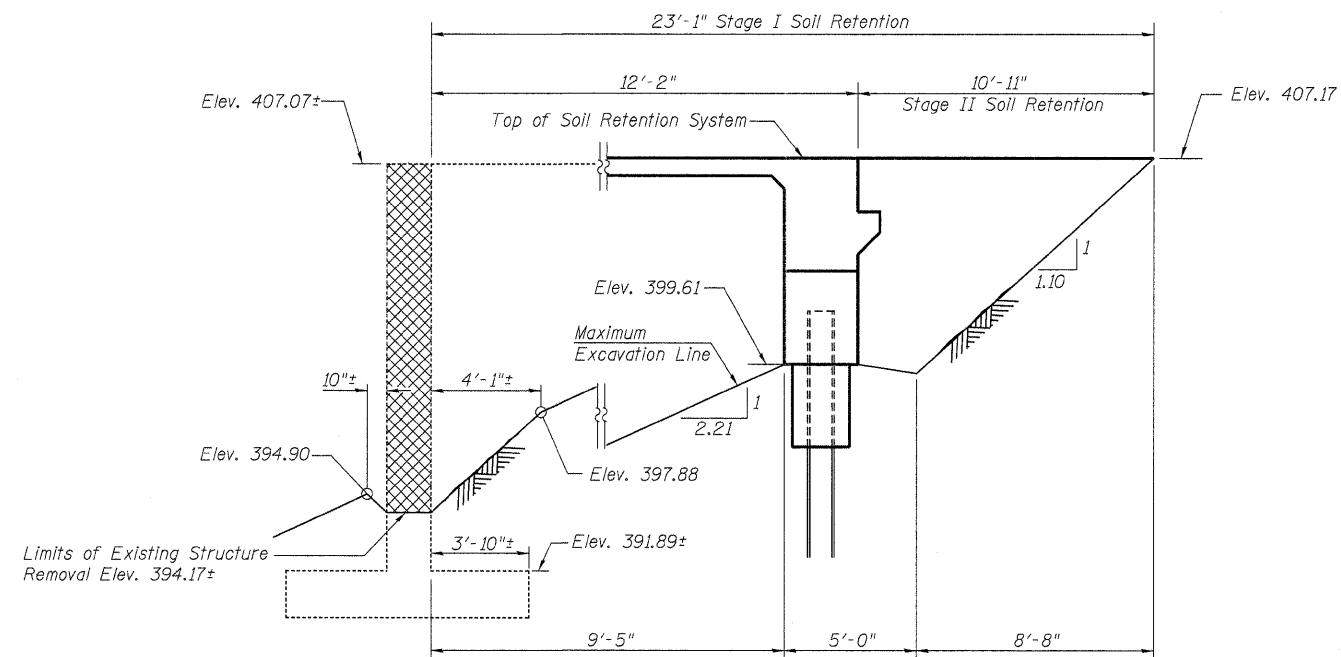
\* Radial Dimensions

- Notes:
1. Cross Hatched areas indicate removal of existing structure.
  2. Location of Stage Removal & Construction lines is also applicable to abutments.
  3. See roadway plans for quantity of Temporary Concrete Barrier.
  4. See sheet 4 to 17 for details of Temporary Concrete Barrier.
  5. All transverse dimensions are measured perpendicular to Local Tangent at Sta. 45+65.88, unless otherwise shown.
  6. All cross sections are Looking East.
  7. Removal of existing bridge railing and bituminous wearing surface is included with Removal of Existing Structure.
  8. A cantilevered sheet piling design does not appear feasible and additional members or other retention systems may be necessary. The Contractor shall submit a temporary soil retention system design including plan details and calculations for review and acceptance by the Engineer.



**TEMPORARY SOIL RETENTION AT WEST ABUTMENT**

(Dimensions measured along Stage Construction Line)



**TEMPORARY SOIL RETENTION SYSTEM AT EAST ABUTMENT**

(Dimensions measured along Stage Construction Line)

**STAGE CONSTRUCTION DETAILS  
STRUCTURE NO. 028-0084**

<b>LIN ENGINEERING LTD.</b> Consulting Engineers Chatham, Illinois <small>Designed By: ESH    Checked By: MTH    Drawn By: YBP Date: 2/2009    File: 028-0084.dgn</small>	SHEET NO. 3  17 SHEETS	F.A.P. RTE.	SECTION	COUNTY	TOTAL SHEETS	SHEET NO.
		869	101B-1	FRANKLIN	40	18
		CONTRACT NO. 78086				
		FED. ROAD DIST. NO.	ILLINOIS	FED. AID PROJECT		