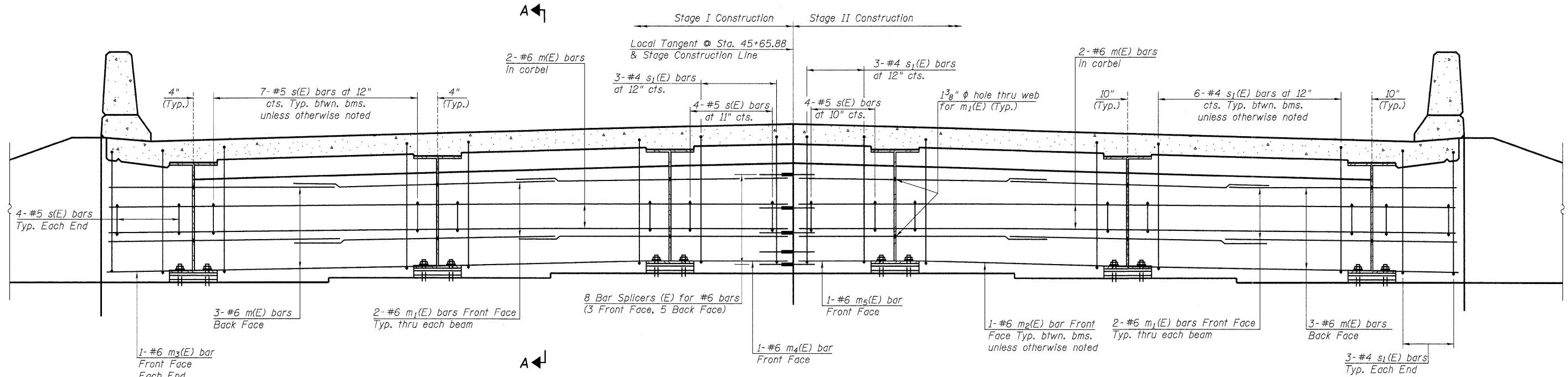


STATE OF ILLINOIS
DEPARTMENT OF TRANSPORTATION

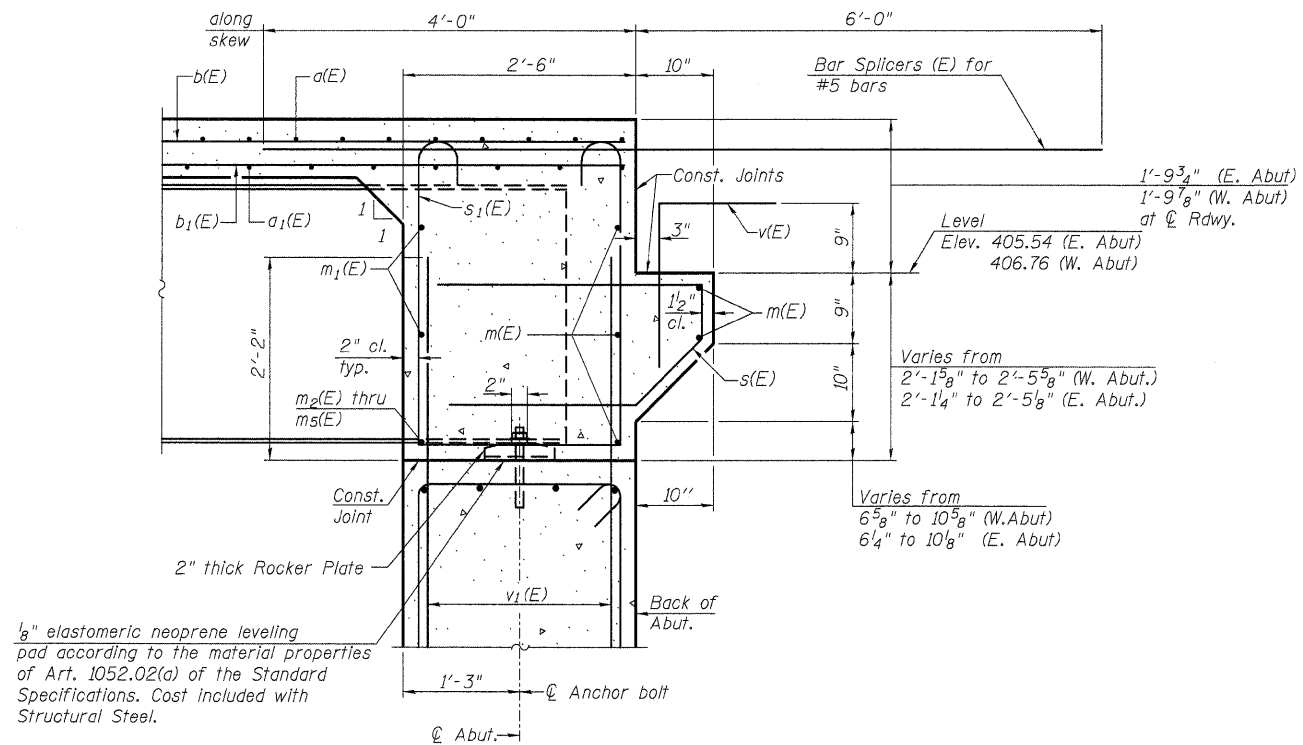


DIAPHRAGM ELEVATION AT EAST ABUTMENT

(Looking East)
(All horizontal dimensions at right angles to Local Tangent)
(West Abutment mirrored about Local Tangent)

Notes:
Reinforcement bars in diaphragm are billed with superstructure on sheet 8 of 17.
Concrete in diaphragm is included with Concrete Superstructure on sheet 8 of 17.
For details of bars s(E) & s₁(E) see sheet 8 of 17.
The s(E) and s₁(E) bars shall be placed parallel to the beams. Spacing for these bars shall be at right angles to the beams.
For location of holes thru web, see sheet 12 of 17.

MIN. BAR LAP
#6 bar = 2'-9"



SECTION A-A

(Dimensions at right angles to abutment, except as shown.)

**CONCRETE END DIAPHRAGMS
STRUCTURE NO. 028-0084**

<p>LIN ENGINEERING, LTD. Consulting Engineers Chatham, Illinois</p> <p>Designed By: ESH Checked By: MTH Drawn By: TBP Date: 2/2009 File: 028-0084.dgn</p>	<p>SHEET NO. 11</p> <p>17 SHEETS</p>	F.A.P. RTE.	SECTION	COUNTY	TOTAL SHEETS	SHEET NO.
		869	101B-1	FRANKLIN	40	26
		CONTRACT NO. 78086				
		FED. ROAD DIST. NO. ILLINOIS FED. AID PROJECT				