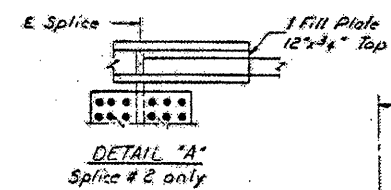
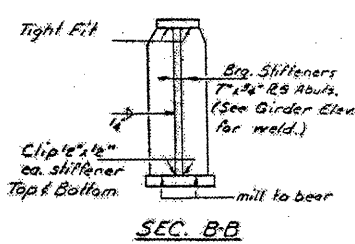
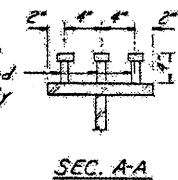
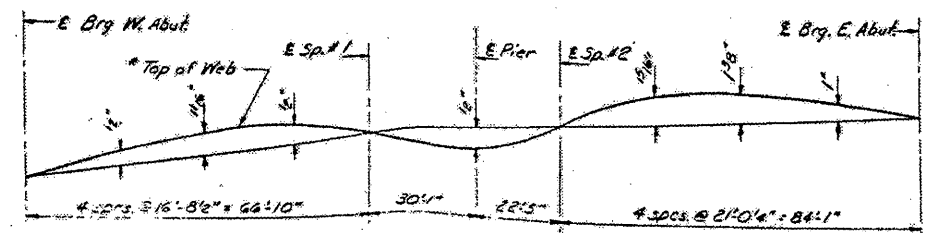


3/4" x 4" CR 1020 Steel granular or solid flux filled headed studs automatically end welded.



**GIRDER ELEVATION**  
\*\* Note: All interior bearing stiffeners shall be placed on 20° skew for D & D<sub>e</sub> connection.



**BRIDGE NO. 1  
FOR INFORMATION ONLY**  
STRUCTURAL STEEL DETAILS

FILE NAME =	USER NAME = gautneyrk	DESIGNED -	REVISED -	<b>STATE OF ILLINOIS DEPARTMENT OF TRANSPORTATION</b>	SCALE: _____ SHEET NO. _____ OF _____ SHEETS STA. _____ TO STA. _____	F.A.S. RTE. 803 814	SECTION (X1-41P-1, 197-11P-1)	COUNTY WILLIAMSON, WHITE	TOTAL SHEETS 10	SHEET NO. 6	
	PLOT SCALE = 4915.2000' / IN.	DRAWN -	REVISED -			CONTRACT NO. 78139		ILLINOIS FED. AID PROJECT			
	PLOT DATE = 8/24/2009	CHECKED -	REVISED -								
		DATE -	REVISED -								