

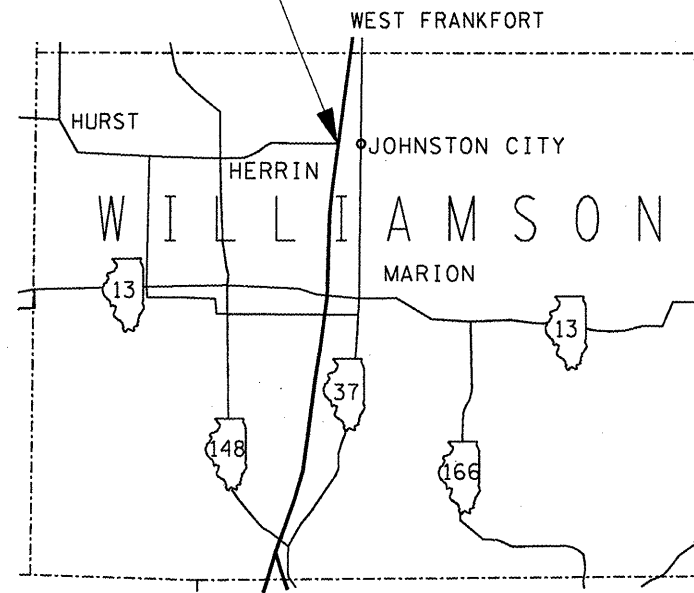
F.A.S. RTE. 903 815	SECTION (X1-4)P-1, (97-1)P-1	COUNTY WILLIAMSON, WHITE	TOTAL SHEETS 10	SHEET NO. 1
CONTRACT NO. 78139				

STATE OF ILLINOIS
DEPARTMENT OF TRANSPORTATION
DIVISION OF HIGHWAYS

PROPOSED HIGHWAY PLANS

FOR INDEX OF SHEETS, SEE SHEET NO. 2

IMPROVEMENT LOCATION
BRIDGE NO. 2
STRUCTURE NO. 100-0040
F.A.S. 903 (HERRIN ROAD) OVER I-57
I-57 MILEPOST 59



HERRIN TOWNSHIP

TRAFFIC DATA:

F.A.S. 903 2006 ADT = 7800
6% TRUCKS

I-57 2007 ADT = 35,900
28% TRUCKS

BRIDGE DATA:

INVENTORY RATING 20.5
OPERATING RATING 34.1

J.U.L.I.E.
JOINT UTILITY LOCATION INFORMATION FOR EXCAVATION
1-800-892-0123
OR 811

PROJECT ENGINEER Dennis Hillebrenner
PROJECT MANAGER Richard Brasel

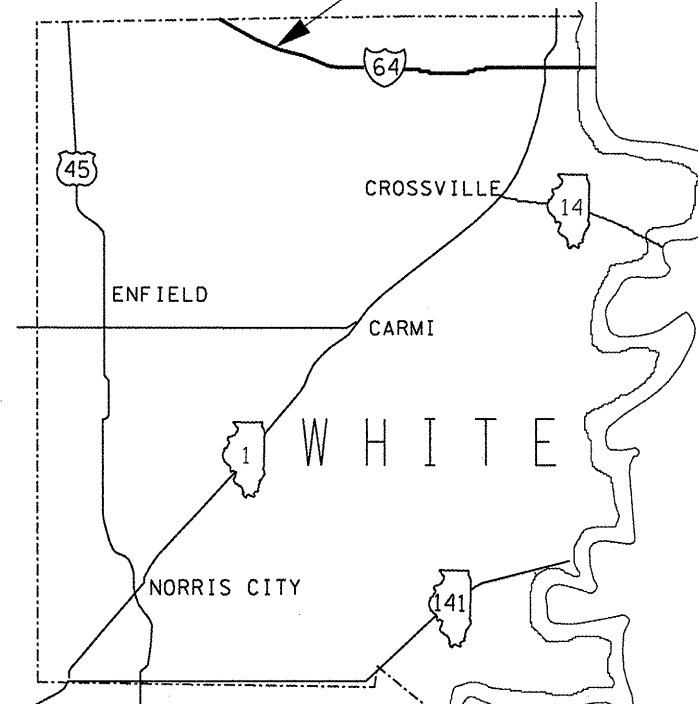
CONTRACT NO. 78139

ROUTES F.A.S. 903 & F.A.S. 815 (CH2 & CH20)
SECTION (X1-4)P-1, (97-1)P-1

BRIDGE PAINTING
WILLIAMSON & WHITE COUNTIES

C-99-065-09

IMPROVEMENT LOCATION
BRIDGE NO. 1
STRUCTURE NO. 097-0044
F.A.S. 815 OVER I-64
I-64 MILEPOST 117



BURNT PRAIRIE TOWNSHIP

TRAFFIC DATA:

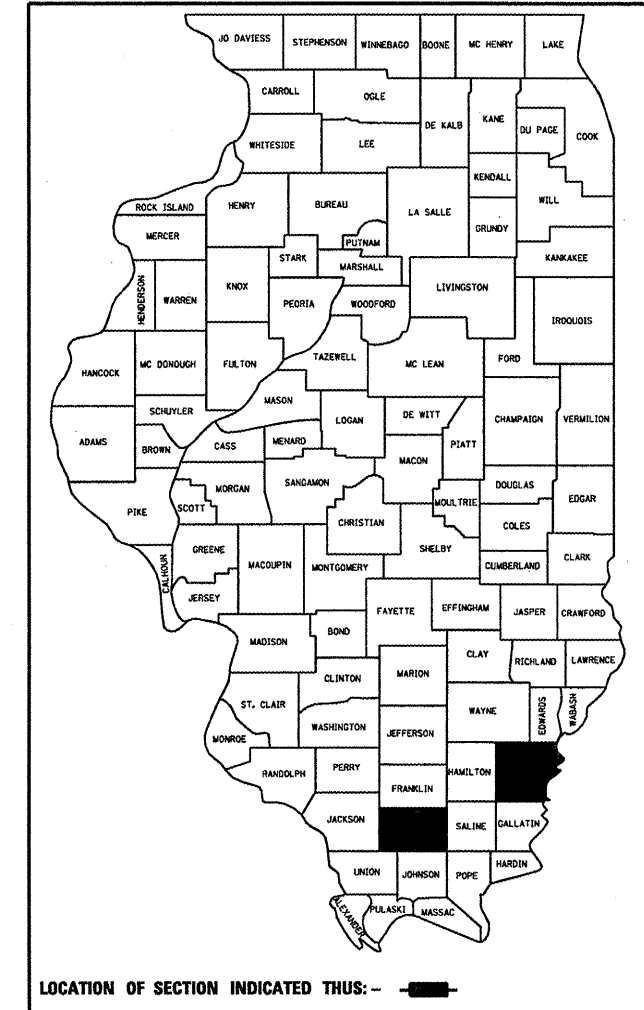
F.A.S. 815 2005 ADT = 950
11% TRUCKS

I-64 2007 ADT = 9300
35% TRUCKS

BRIDGE DATA:

INVENTORY RATING 16.7
OPERATING RATING 31.1

D-99-046-09



STATE OF ILLINOIS
DEPARTMENT OF TRANSPORTATION
DIVISION OF HIGHWAYS

SUBMITTED Oct 19 2009
Mary C. Lami
DEPUTY DIRECTOR OF HIGHWAYS, REGION ENGINEER

December 4 2009
Charles J. Orgerolle
ENGINEER OF DESIGN AND ENVIRONMENT

December 4 2009
Christine M. Reed
DIRECTOR OF HIGHWAYS, CHIEF ENGINEER

**PRINTED BY THE AUTHORITY
OF THE STATE OF ILLINOIS**

INDEX OF SHEETS

SHEET NO.	DESCRIPTION
1	COVER SHEET
2	INDEX OF SHEETS, STANDARDS, SIGNATURES
3	GENERAL NOTES
4	SUMMARY OF QUANTITIES
5	097-0044 GENERAL PLAN AND ELEVATION
6,7	097-0044 STRUCTURAL STEEL FOR INFORMATION ONLY
8	100-0040 GENERAL PLAN AND ELEVATION
9,10	100-0040 STRUCTURAL STEEL FOR INFORMATION ONLY

STANDARDS

701201-03	LANE CLOSURE, 2L, 2W DAY ONLY
701400-05	APPROACH TO LANE CLOSURE, FREEWAY/EXPRESSWAY
701401-05	LANE CLOSURE, FREEWAY/EXPRESSWAY
701402-07	LANE CLOSURE, FREEWAY/EXPRESSWAY + BARRIER
701411-06	LANE CLOSURE, MULTILANE, AT ENTRANCE OR EXIT RAMP, FOR SPEEDS 45 MPH OR GREATER
701901-01	TRAFFIC CONTROL DEVICES

Prepared By: Dennis W. Hillel
DISTRICT STUDIES & PLANS ENGINEER

Examined By: James Lewis Emery
DISTRICT LAND ACQUISITION ENGINEER

Examined By: Carly Nelson
DISTRICT PROGRAM DEVELOPMENT ENGINEER

Examined By: Walt Williams
DISTRICT OPERATIONS ENGINEER

Examined By: John Chouh
DISTRICT CONSTRUCTION ENGINEER

Examined By: Bruce Peoples
DISTRICT MATERIALS ENGINEER

Examined By: John Chouh
DISTRICT PROJECT IMPLEMENTATION ENGINEER

Examined By: Wendy Taylor
ASSISTANT REGIONAL ENGINEER

Approved By: Mary C. Lammie, RKS
DEPUTY DIRECTOR OF HIGHWAYS, REGION 5 ENGINEER

Oct 19 20 09
DATE

Rev:

FILE NAME =	USER NAME = gautneyrk	DESIGNED -	REVISED -	STATE OF ILLINOIS DEPARTMENT OF TRANSPORTATION		
ci:\pw_work\VPWIDOT\GAUTNEYRK\0157578\7	139-sheet-plan.dgn	DRAWN -	REVISED -		F.A.S. RTE. 303 815	SECTION (X1-4)P-1, (97-1)P-1
	PLOT SCALE = 4915.2856 / IN.	CHECKED -	REVISED -		COUNTY WILLIAMSON, WHITE	TOTAL SHEETS 10
	PLOT DATE = 8/24/2009	DATE -	REVISED -		CONTRACT NO. 78139	SHEET NO. 2
					SCALE: _____	SHEET NO. _____ OF _____ SHEETS
					ILLINOIS FED. AID PROJECT	

GENERAL NOTES

All structural steel shall be cleaned and painted. Cleaning and painting shall conform to the requirements of special provision "Cleaning And Painting Existing Steel Structures". Near White Metal Blast Cleaning - SSPC - SP10 and Paint System 1 - OZ/E/U shall be used.

The color of the final finish coat for all interior steel surfaces shall be gray, Munsell No. 5B 7/1. The color of the final finish coat for the exterior and bottom flange of the fascia beams shall be Interstate Green, Munsell No. 7.5G 4/8.

SSPC - QP1 and SSPC - QP2 Painting Contractor Certifications are required.

The existing structural steel coating contains lead. The Contractor shall take appropriate precautions to deal with the presence of lead on this project.

A minimum of three (3) air monitors are required at Structure No. 100-0040. See special provision "Containment and Disposal of Lead Paint Cleaning Residues".

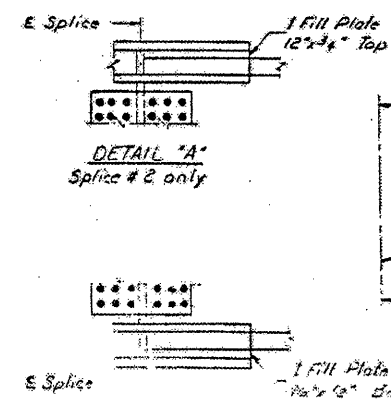
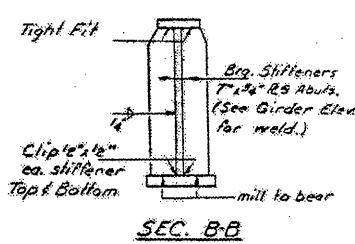
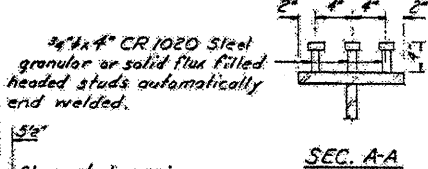
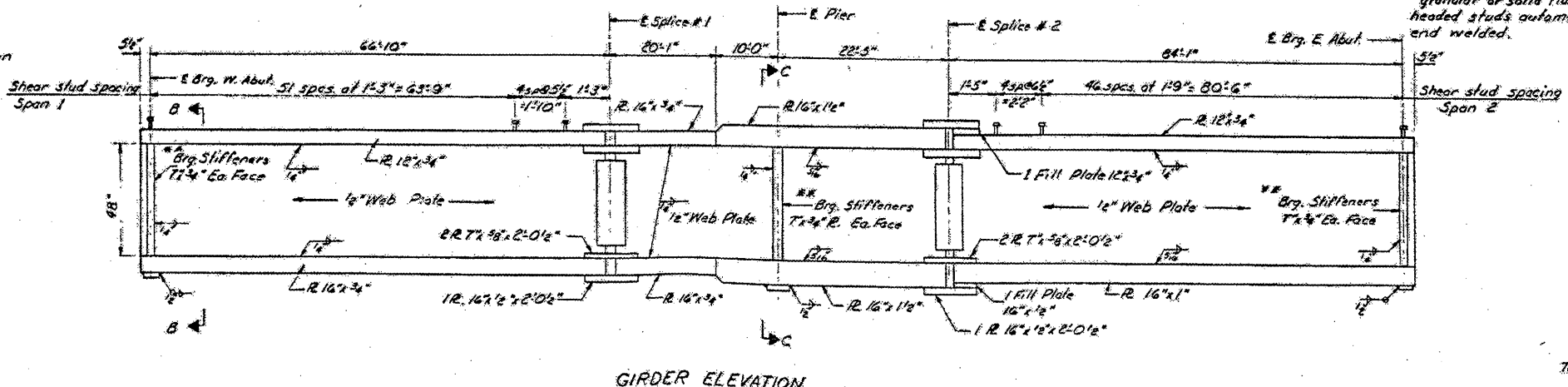
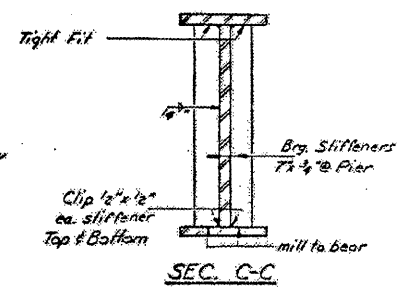
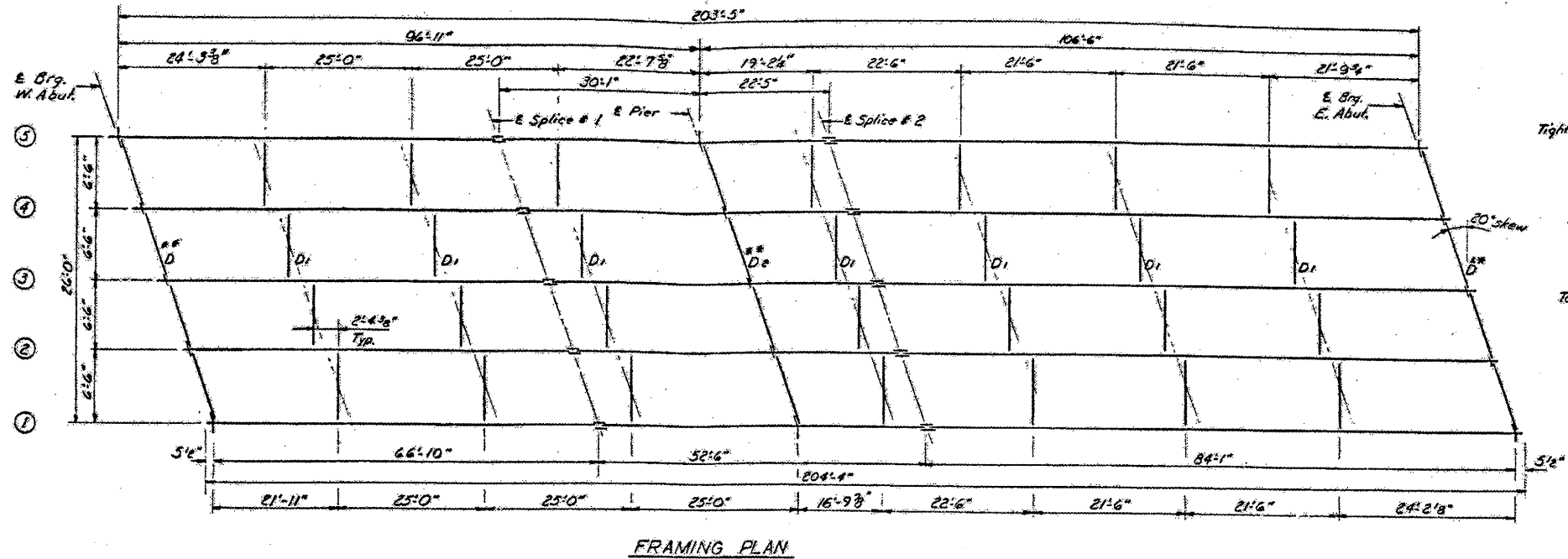
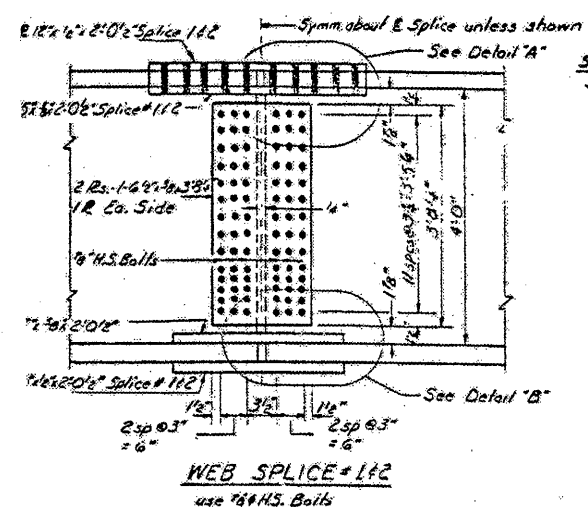
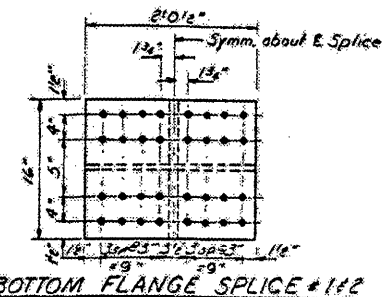
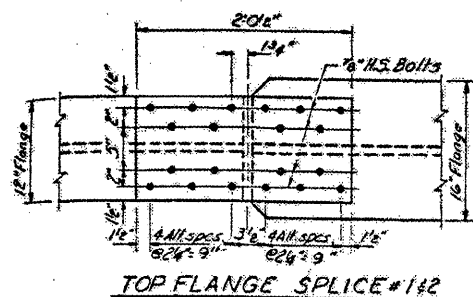
Cleaning and painting of new bearings at the abutments of Structure No. 097-0044 is not required.

FILE NAME =	USER NAME = gautney-k	DESIGNED -	REVISED -	STATE OF ILLINOIS DEPARTMENT OF TRANSPORTATION	----- ----- -----	F.A.S. RTE. 903 816	SECTION (X1-4)P-1, (97-1)P-1	COUNTY WILLIAMSON, WHITE	TOTAL SHEETS 10	SHEET NO. 3
	PLOT SCALE = 4915.2000' / IN.	CHECKED -	REVISED -		SCALE: -----	SHEET NO. ___ OF ___ SHEETS		STA. ----- TO STA. -----		CONTRACT NO. 78139
	PLOT DATE = 10/6/2009	DATE -	REVISED -		ILLINOIS FED. AID PROJECT					

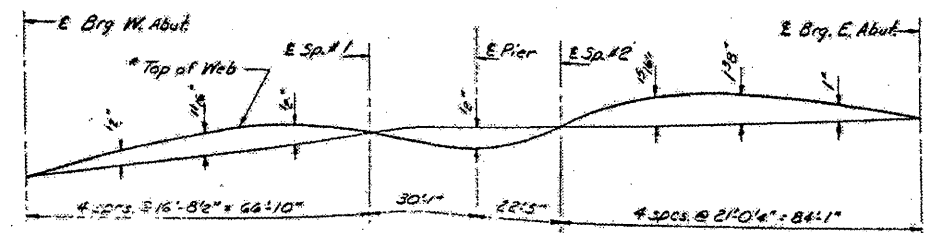
SUMMARY OF QUANTITIES

CODE NUMBER	ITEM DESCRIPTION	UNIT	CONST. TYPE CODE: SFTY-2A		
			TOTAL QUANTITY	WHITE F. A. S. 815 BRIDGE NO. 1 097-0044	WILLIAMSON F. A. S. 903 BRIDGE NO. 2 100-0040
50600600	CLEANING AND PAINTING STEEL BRIDGE NO. 1	L SUM	1	1	
50606401	CONTAINMENT AND DISPOSAL OF LEAD PAINT CLEANING RESIDUES NO. 1	L SUM	1	1	
50600700	CLEANING AND PAINTING STEEL BRIDGE NO. 2	L SUM	1		1
50606402	CONTAINMENT AND DISPOSAL OF LEAD PAINT CLEANING RESIDUES NO. 2	L SUM	1		1
67000400	ENGINEER'S FIELD OFFICE, TYPE A	CAL. MO	3	1.5	1.5
70100450	TRAFFIC CONTROL AND PROTECTION, STANDARD 701201	L SUM	1	0.5	0.5
70100800	TRAFFIC CONTROL AND PROTECTION, STANDARD 701401	L SUM	1	1	
70100805	TRAFFIC CONTROL AND PROTECTION, STANDARD 701402	L SUM	1		1
70106800	CHANGEABLE MESSAGE SIGN	CAL. MO	3	1	2
67100100	MOBILIZATION	L SUM	1	0.5	0.5
X0323984	PORTABLE TEMPORARY BARRIER SYSTEM	FOOT	198		198
X0323985	RELOCATE PORTABLE TEMPORARY BARRIER SYSTEM	FOOT	594		594
X7011420	TRAFFIC CONTROL AND PROTECTION, STANDARD 701411	L SUM	1	0.5	0.5

FILE NAME =	USER NAME = geutneyrk	DESIGNED -	REVISED -	STATE OF ILLINOIS DEPARTMENT OF TRANSPORTATION	SCALE: _____	SHEET NO. _____ OF _____ SHEETS	STA. _____ TO STA. _____	F. A. S. RY. 815	SECTION (X1-4)P-1, (97-1)P-1	COUNTY WILLIAMSON, WHITE	TOTAL SHEETS 10	SHEET NO. 4
	PLOT SCALE = 4915.2000' / IN.	CHECKED -	REVISED -									
	PLOT DATE = 10/22/2009	DATE -	REVISED -									

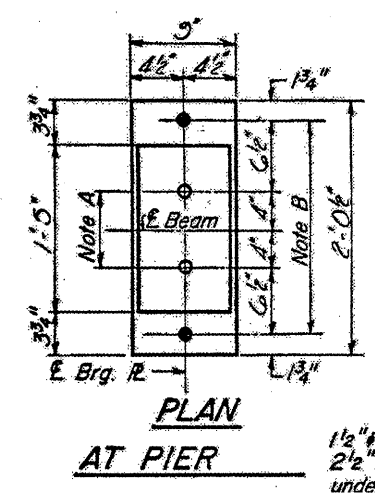
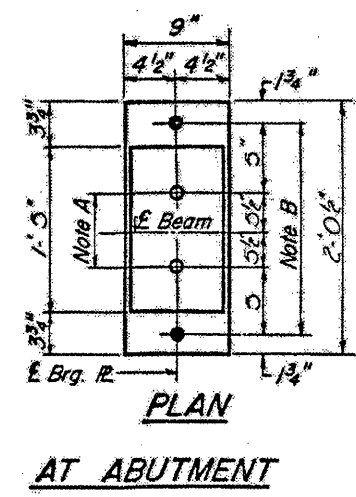
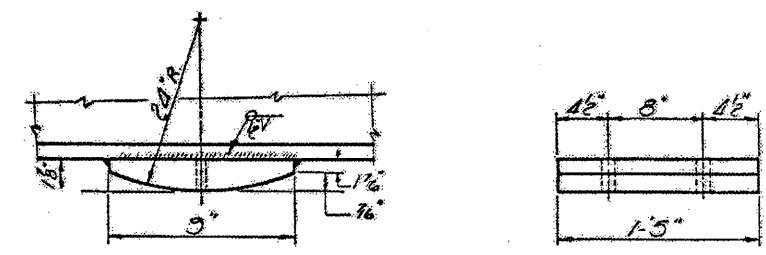
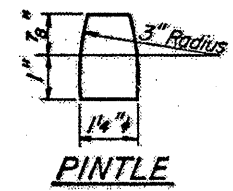
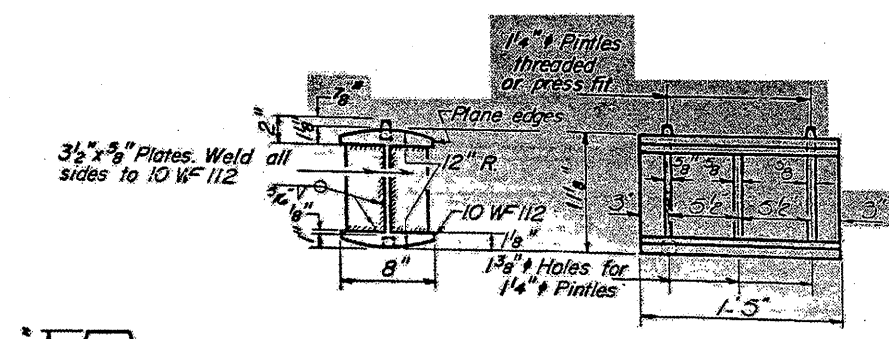
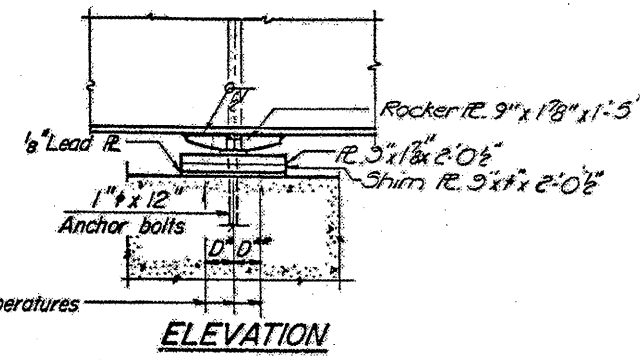
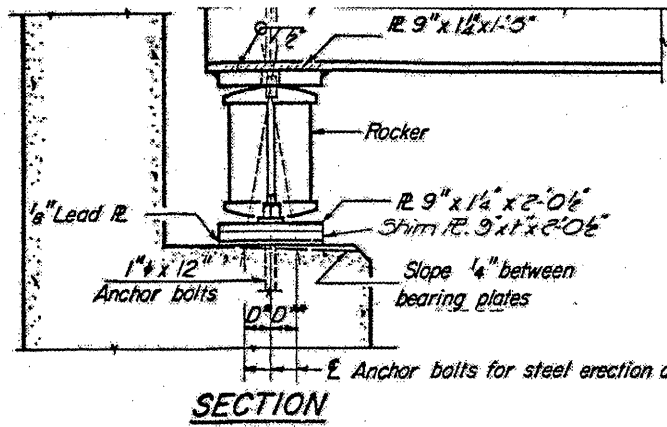


**** Note: All interior bearing stiffeners shall be placed on 20° skew for D & D_e connection.**



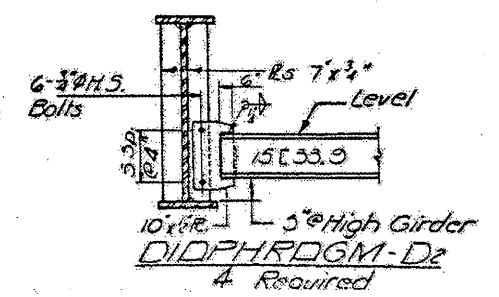
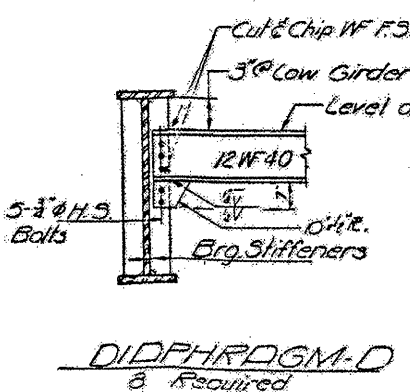
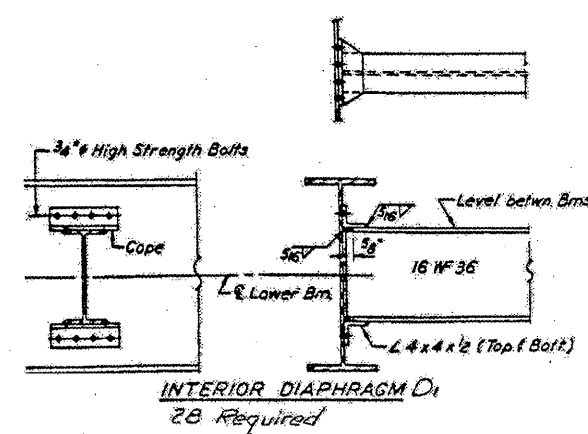
**BRIDGE NO. 1
FOR INFORMATION ONLY
STRUCTURAL STEEL DETAILS**

FILE NAME =	USER NAME = gautneyrk	DESIGNED -	REVISED -	STATE OF ILLINOIS DEPARTMENT OF TRANSPORTATION	SCALE: _____ SHEET NO. _____ OF _____ SHEETS STA. _____ TO STA. _____	F.A.S. RTE. 803 BLS	SECTION (X1-4)P-1, 197-1)P-1	COUNTY WILLIAMSON, WHITE	TOTAL SHEETS 10	SHEET NO. 6		
	PLOT SCALE = 4/15.2000 "/ IN.	DRAWN -	REVISED -			CONTRACT NO. 78139		ILLINOIS FED. AID PROJECT				
	PLOT DATE = 8/24/2009	CHECKED -	REVISED -									
		DATE -	REVISED -									



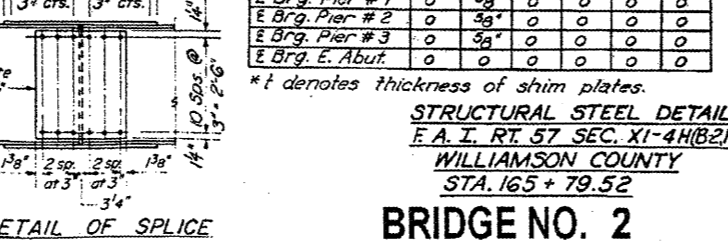
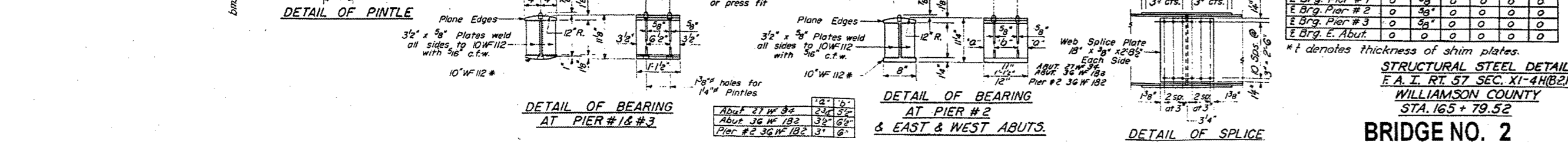
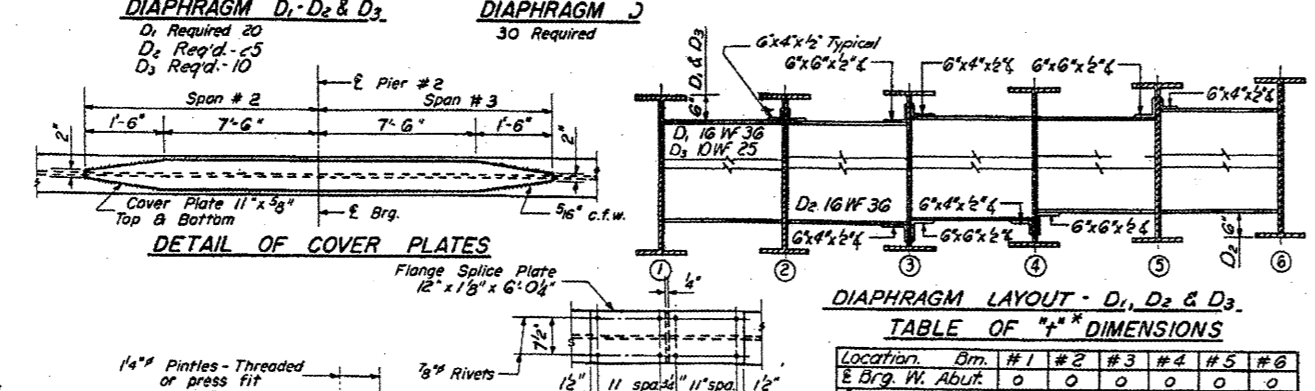
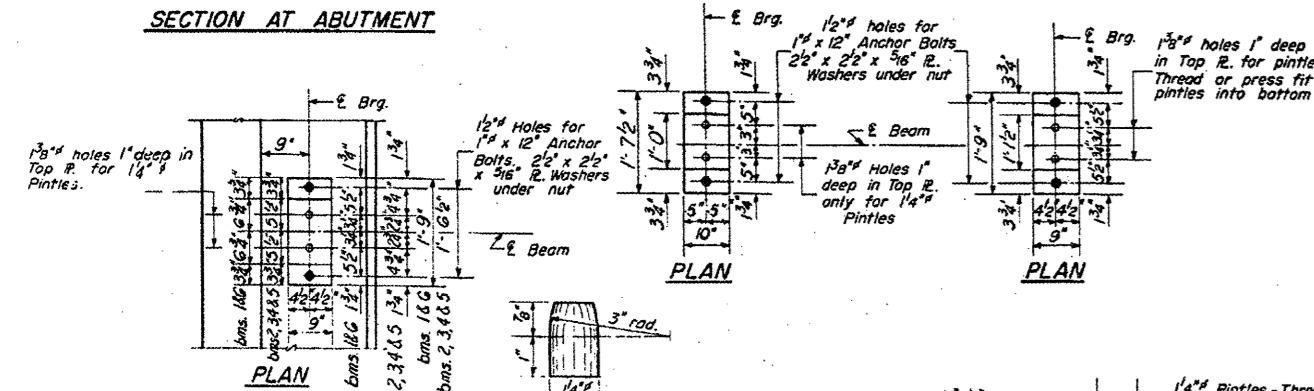
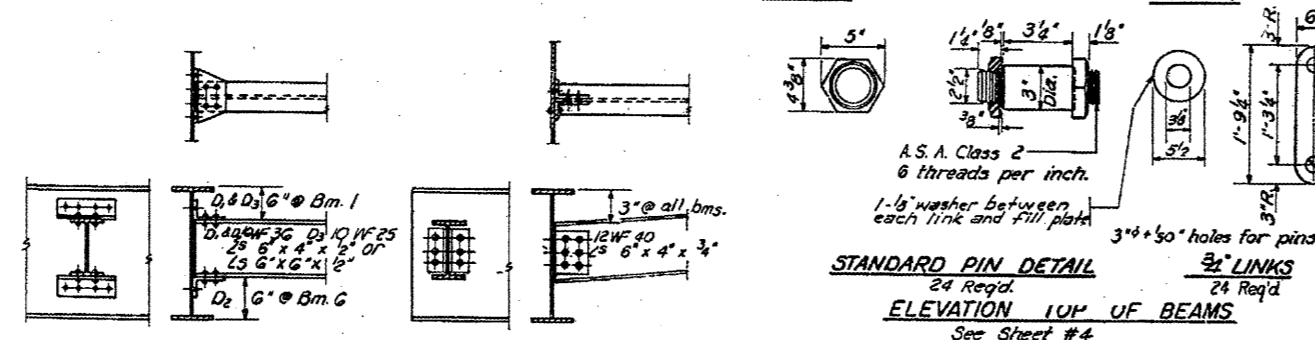
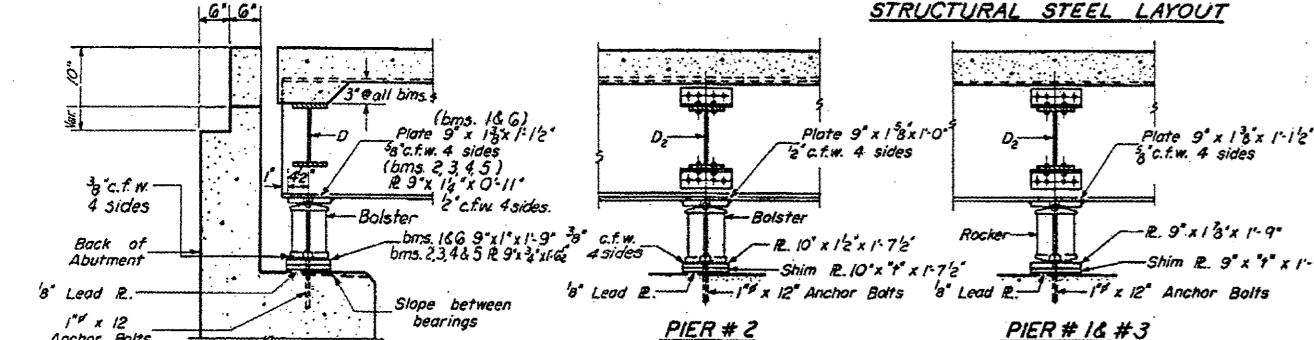
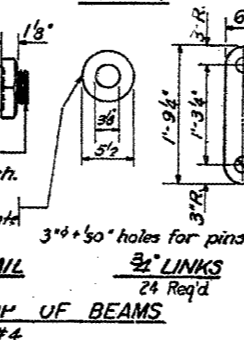
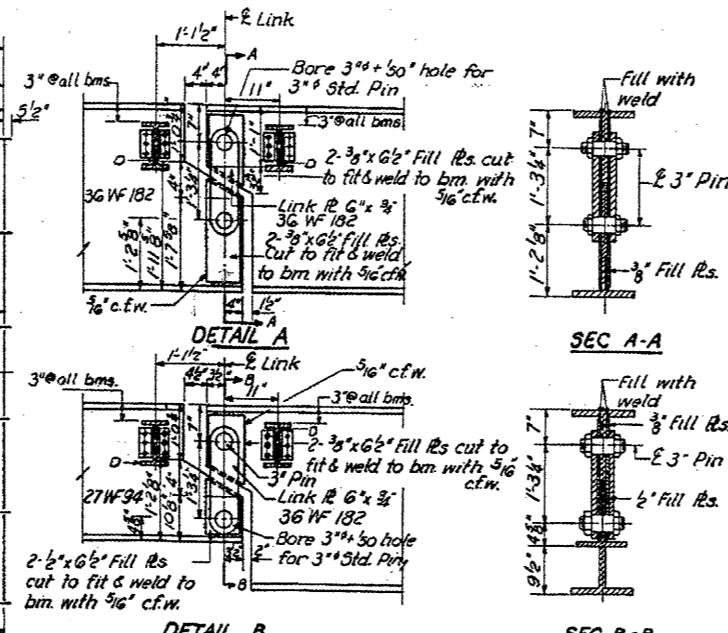
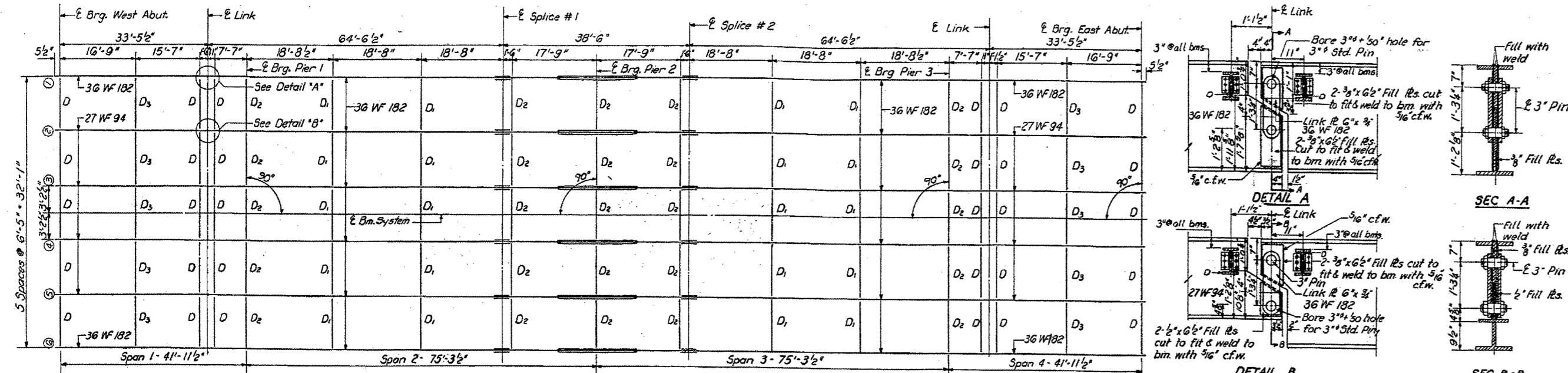
NOTE B
 1 1/2" Holes for 1" anchor bolts.
 2 1/2" x 2 1/2" x 5/16" R. Washers under nut.

BEARING ASSEMBLY DETAILS

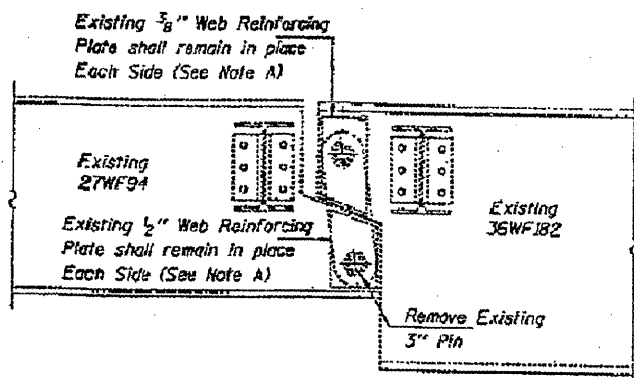


**CROSS FRAMES & BEDRING DETAILS
 BRIDGE NO. 1
 FOR INFORMATION ONLY**

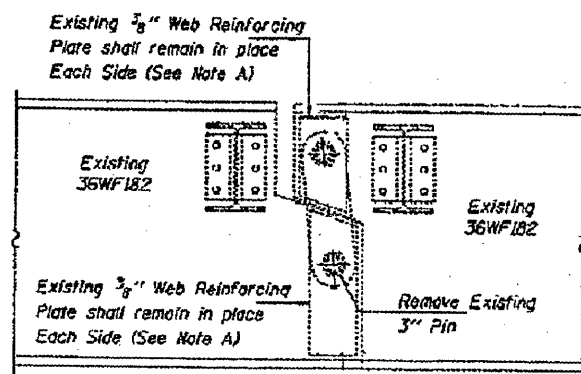
FILE NAME =	USER NAME = gautneyrk	DESIGNED -	REVISED -	STATE OF ILLINOIS DEPARTMENT OF TRANSPORTATION	SCALE: _____ SHEET NO. _____ OF _____ SHEETS STA. _____ TO STA. _____	F.A.S. R/E	SECTION	COUNTY	TOTAL SHEETS	SHEET NO.
PLOT SCALE = 4915.2000 / IN.	DRAWN -	REVISED -	903			(X1-4)P-1, (97-1)P-1	WILLIAMSON, WHITE	10	7	
PLOT DATE = 8/24/2009	CHECKED -	REVISED -	815							CONTRACT NO. 78139
	DATE -	REVISED -				ILLINOIS FED. AID PROJECT				



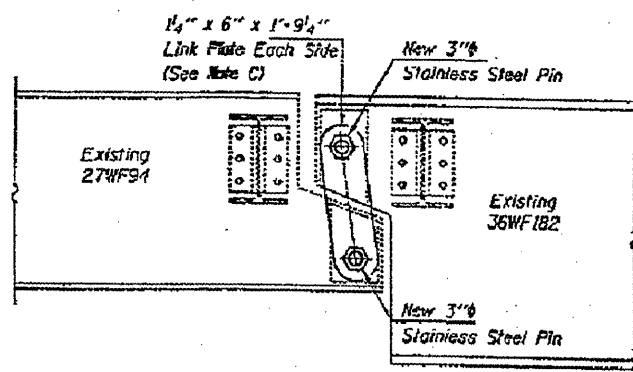
BRIDGE NO. 2 FOR INFORMATION ONLY



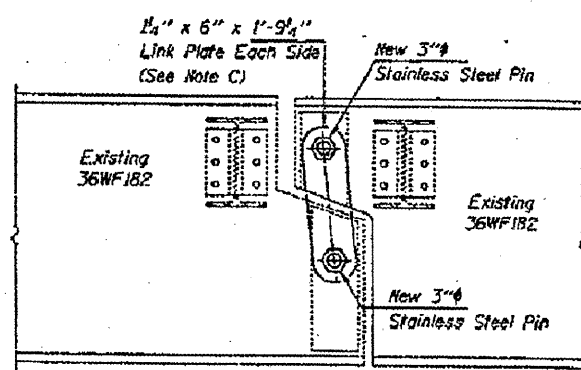
ELEVATION AT EXISTING PIN ASSEMBLY FOR INTERIOR BEAMS



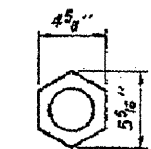
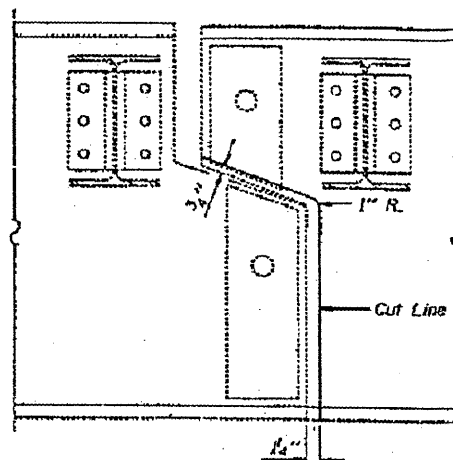
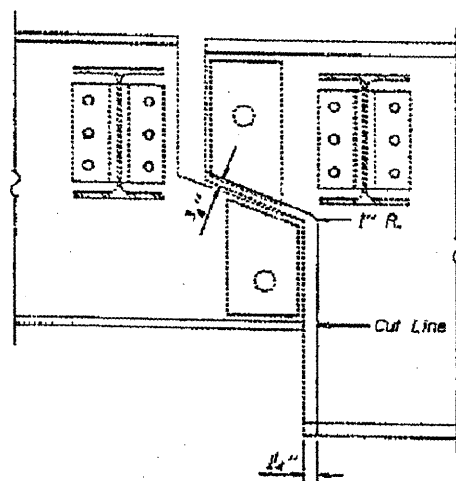
ELEVATION AT EXISTING PIN ASSEMBLY FOR EXTERIOR BEAMS



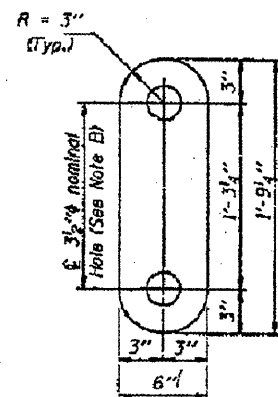
ELEVATION AT NEW PIN ASSEMBLY FOR INTERIOR BEAMS



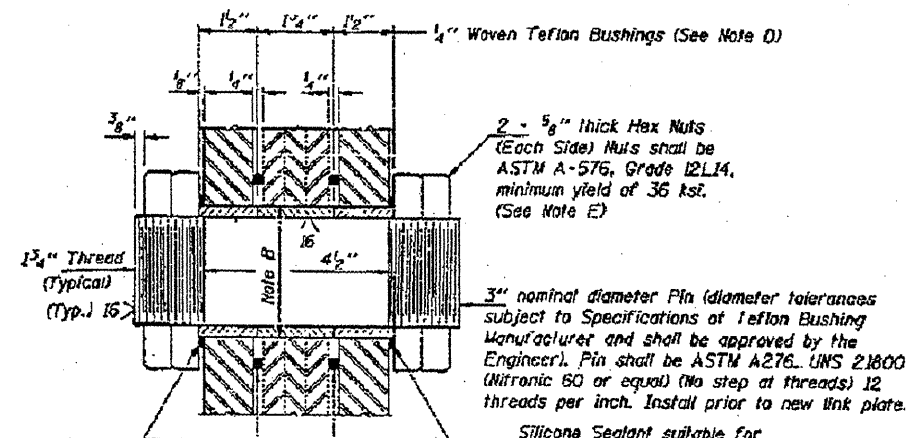
ELEVATION AT NEW PIN ASSEMBLY FOR EXTERIOR BEAMS



NUT DETAIL (66 Required)



LINK PLATE DETAIL (24 Required)



SECTION THRU PIN (24 Required)

Note A:
Existing welds shall be inspected for cracks using liquid dye penetrant or magnetic particle testing. Any cracks that are found shall be identified and reported to the Bureau of Bridges and Structures for further disposition. Clean and paint before installing new link plates.

Note C:
Inside face of new link plates shall receive first field coat in shop. The primer shall pass the M.E.K. Rub Test before the first field coat is applied.

NOTES

All new structural steel shall conform to AASHTO Classification M-270 Gr. 35.

The inorganic zinc rich primer/acrylic/acrylic paint system shall be used for shop and field painting of new structural steel except where otherwise noted. The color of the acrylic finish coat shall be Interstate Green, Munsell No. 7.5G 4/B. See Special Provisions "Cleaning and Painting New Metal Structures". Cost shall be included in the cost of "Pin and Link Plate Replacement".

Existing structural steel shall be cleaned and painted as required by the Special Provision "Cleaning and Painting Adjacent Areas of Existing Steel Structures". Cost shall be included in the cost of "Pin and Link Plate Replacement".

All existing steel surfaces behind link plates shall be cleaned and primed before installation of new link plates. Cost shall be included in the cost of "Pin and Link Plate Replacement".

BILL OF MATERIAL

ITEM	UNIT	QUANTITY
Temporary Support System	Each	12
Pin and Link Plate Replacement	Each	12

PIN AND LINK PLATE REPLACEMENT
F.A.I. RT. 57 SEC. XI-4HB-2
WILLIAMSON COUNTY

BRIDGE NO. 2
FOR INFORMATION ONLY

FILE NAME	USER NAME = gautneyrk	DESIGNED -	REVISED -	STATE OF ILLINOIS DEPARTMENT OF TRANSPORTATION	SCALE: _____ SHEET NO. _____ OF _____ SHEETS STA. _____ TO STA. _____	F.A.S. SECTION COUNTY TOTAL SHEETS SHEET NO.
		DRAWN -	REVISED -			803 (X1-4)P-1, (97-1)P-1 WILLIAMSON, WHITE 10 10
		CHECKED -	REVISED -			CONTRACT NO. 78139
		DATE -	REVISED -			(ILLINOIS) FED. AID PROJECT