

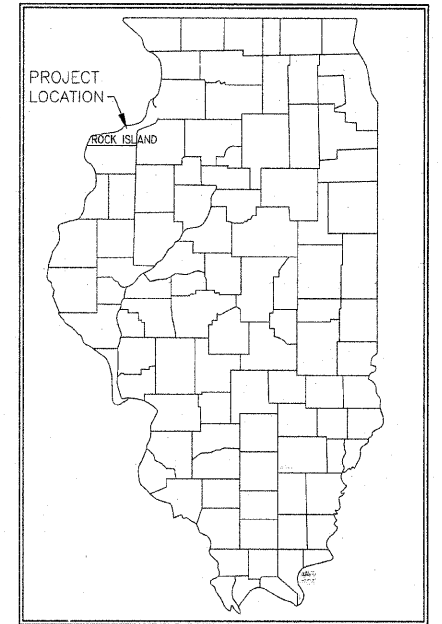
F.A.U. RTE	SECTION	COUNTY	TOTAL SHEETS	SHEET NO.
5827	02-00221-00-RP	ROCK ISLAND	34	1

INDEX OF SHEETS	
1.	COVER SHEET
2-4.	QUANTITIES, GENERAL NOTES & SYMBOL & SIGN LEGENDS
5.	PROPOSED TYPICAL SECTIONS
6.	EXISTING TYPICAL SECTIONS
7.	DETOUR PLAN
8-9.	REMOVAL PLAN
10-12.	PLAN AND PROFILE
13-14.	PROPOSED WATER & UNDERDRAIN PLAN
15-16.	PAVEMENT MARKING
17.	DETOUR SIGNS & VINYL FENCE DETAILS
18-19.	PRECAST MODULAR RETAINING WALL DETAILS
20.	MISC. DETAILS
21-24.	MOLINE STANDARD DETAILS
25-26.	EROSION CONTROL PLANS
27-28.	GEOMETRIC AND RIGHT OF WAY PLANS
29-34.	CROSS SECTIONS

STATE OF ILLINOIS
DEPARTMENT OF TRANSPORTATION

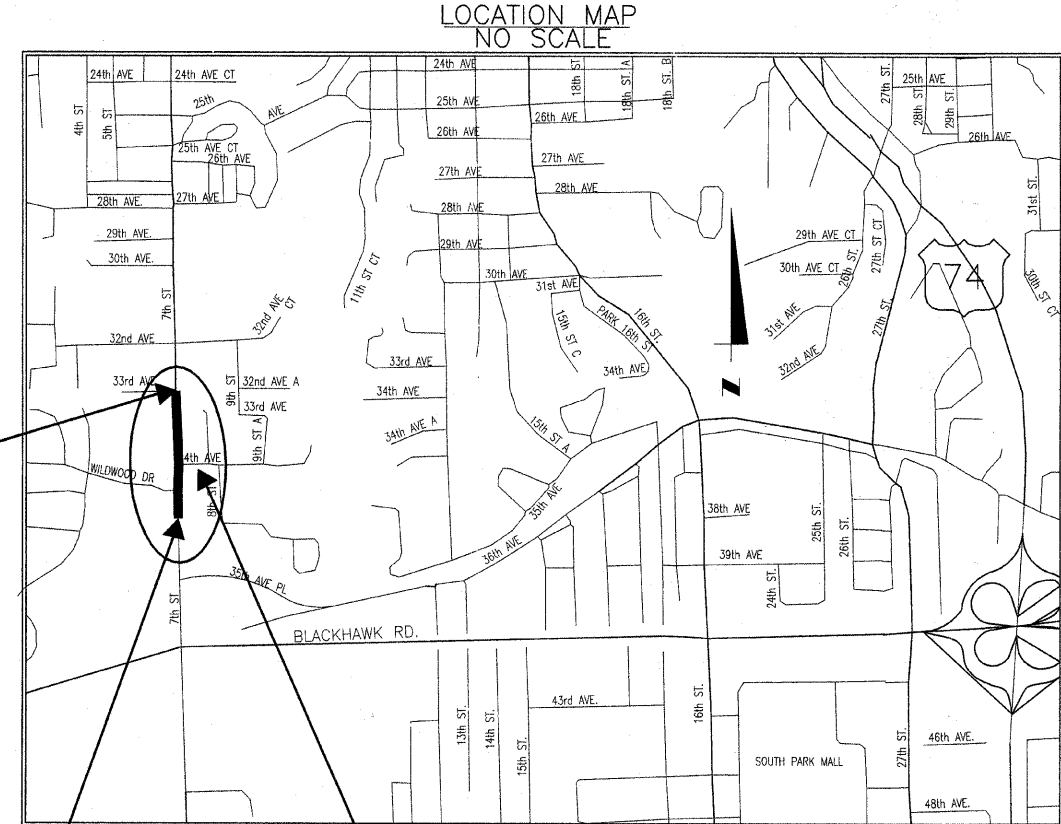
PLANS FOR
PROPOSED LOCAL AGENCY IMPROVEMENT
F.A. URBAN PROJECT

F.A.U. ROUTE 5827
SECTION 02-00221-00-RP
ROCK ISLAND COUNTY
PROJECT NO M-5074(079)
JOB NO C-92-020-08
CITY OF MOLINE
CONTRACT NO. 85460



IDOT HIGHWAY STANDARDS	
280001-05	TEMPORARY EROSION CONTROL SYSTEMS
424001-05	CURB RAMPS FOR SIDEWALKS
542301-02	PRECAST REINFORCED FLARED END SECTION
542311-01	GRATING FOR CONC. FLARED END SECTION
604001-03	FRAME AND LIDS
701501-05	URBAN LANE CLOSURE, 2L, 2W, UNDIVIDED
701701-06	URBAN LANE CLOSURE, MULTILANE INTERSECTION
701801-04	LANE CLOSURE MULTILANE 1W OR 2W CROSSWALK OR SIDEWALK CLOSURE
701901-01	TRAFFIC CONTROL DEVICES
720001-01	SIGN PANEL MOUNTING DETAILS
720006-02	SIGN PANEL ERECTION DETAILS
720011-01	METAL POSTS FOR SIGNS, MARKERS & DELINEATORS
728001-01	TELESCOPING STEEL SIGN SUPPORT
729001-01	APPLICATIONS OF TYPES A & B METAL POSTS (FOR SIGN & MARKERS)
780001-02	TYPICAL PAVEMENT MARKINGS
781001-03	TYPICAL APPLICATIONS RAISED REFLECTIVE PAVEMENT MARKERS
BLR 22-6	TRAFFIC CONTROL DEVICES

CITY OF MOLINE STANDARDS		
DETAIL #	SHT.	
2	21	INTEGRAL CURB DETAIL
3	21	MANHOLE BOX OUT DETAIL
4	21	JOINT TYPE & LAYOUT DETAIL
5	21	CONSTRUCTION JOINT & EXPANSION JOINT DETAIL
6	21	LONGITUDINAL JOINT & TRANSVERSE DETAIL
7	21	RESIDENTIAL / COMMERCIAL DRIVEWAY & SIDEWALK DETAILS
7A	22	TYPICAL BOULEVARD SECTIONS DETAIL
7B	22	TYPICAL BOULEVARD SECTIONS DETAIL
9	22	TYPICAL ADJUSTMENT DETAIL
10	22	TYPICAL MANHOLE DETAIL
13	22	BEDDING AND TRENCH BACKFILL
14	23	CATCH BASIN SINGLE / DOUBLE DETAIL
15	23	CATCHBASIN SPECIAL NO 1, 2, OR 3
18	23	PIPE UNDERDRAIN DETAIL
18A	23	PIPE UNDERDRAIN DETAIL
22	23	GATE VALVE BOX INSTALLATION
23	24	TYPICAL VALVE VAULT DETAIL
24	24	DIRECT TAP SERVICE PIPING (COPPER)
25	24	CURB BOX AND SLEEVE
26	24	THRUST BLOCK INSTALLATIONS
27	24	FIRE HYDRANT ASSEMBLY
28	24	STANDARD TEST CONNECTION
24	24	TREE PLANTING DETAIL

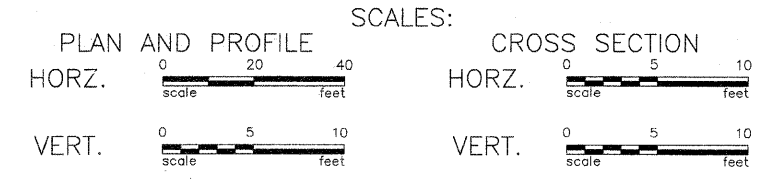


END PROJECT
STA. 118+56.83

BEGIN PROJECT
STA. 104+20.3

PROJECT AREA
7TH STREET
33RD AVE TO WILDWOOD DRIVE EXTENDED
LENGTH OF PROJECT: 1,440 FEET OR 0.32 MILES

FUNCTIONAL CLASSIFICATION:
URBAN MINOR ARTERIAL.
CURRENT ADT = 11,000 PROPOSED ADT = 17,000, TRUCKS = 1%
INTEGRAL CURB & GUTTER, TIED EDGE SUPPORT CONDITIONS
SUBGRADE SUPPORT RATING (SSR) = POOR
DESIGN SPEED = 35 MPH
CLOSED ADT = 120



CALL J.U.L.I.E.
BEFORE YOU DIG
1-800-892-0123

UTILITIES

The following utility companies may have utilities located on this project:

Mid-America Energy 716 17 th St Moline, IL 61265 Elec. PH (309) 793-3746 Gas PH (309) 793-3778	SBC 635 - 18 th Street Rock Island, IL 61201 PH (309) 793-4465
Mediacom 3900 - 26 th Avenue Moline, IL 61265 PH (309) 743-4750	McLeod USA PH (217) 876-7194
City of Moline Sanitary Sewer City of Moline Storm Sewers City of Moline Water Mains	(309) 797-0488 (309) 797-0718 (309) 736-5760

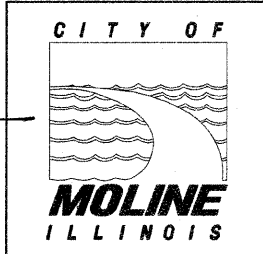
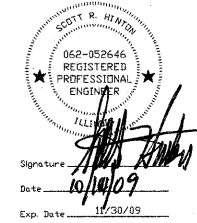
CONTRACTOR SHALL CALL J.U.L.I.E. TO CONTACT ALL UTILITY COMPANIES WHICH MAY HAVE FACILITIES IN THE AREA OF CONSTRUCTION AND OBTAIN THE EXACT LOCATION OF THESE FACILITIES.

STATE OF ILLINOIS
DEPARTMENT OF TRANSPORTATION

Approved: 10/19/09
MOLINE, IL CITY ENGINEER

Passed: 10/30/09
District 2 Engineer of Local Roads & Streets

Releasing for Bid: 10/30/09
Based on Limited Review:
Deputy Director of Highway, Region 2 Engineer



Prepared By
City of Moline, Illinois
DEPARTMENT OF PUBLIC WORKS
Engineering Division

10/19/09
APPROVED SCOTT R. HINTON P.E. 52646 DATE
CITY ENGINEER EXP. 11-09