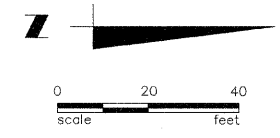
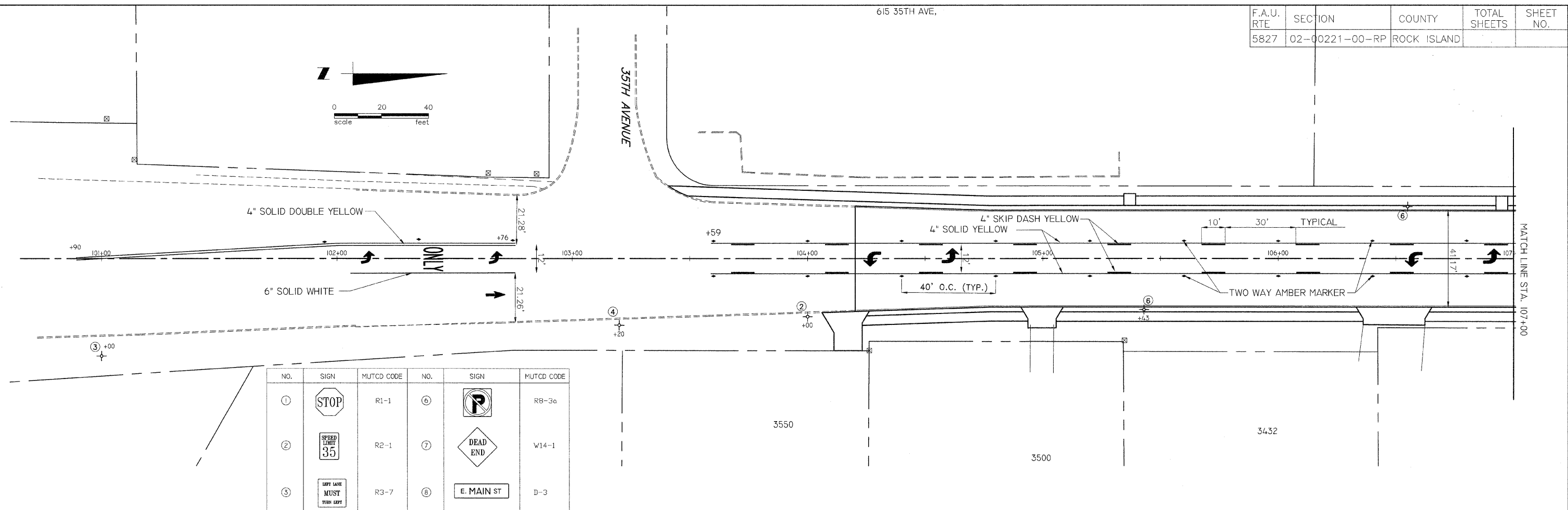


615 35TH AVE.

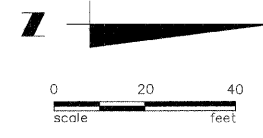
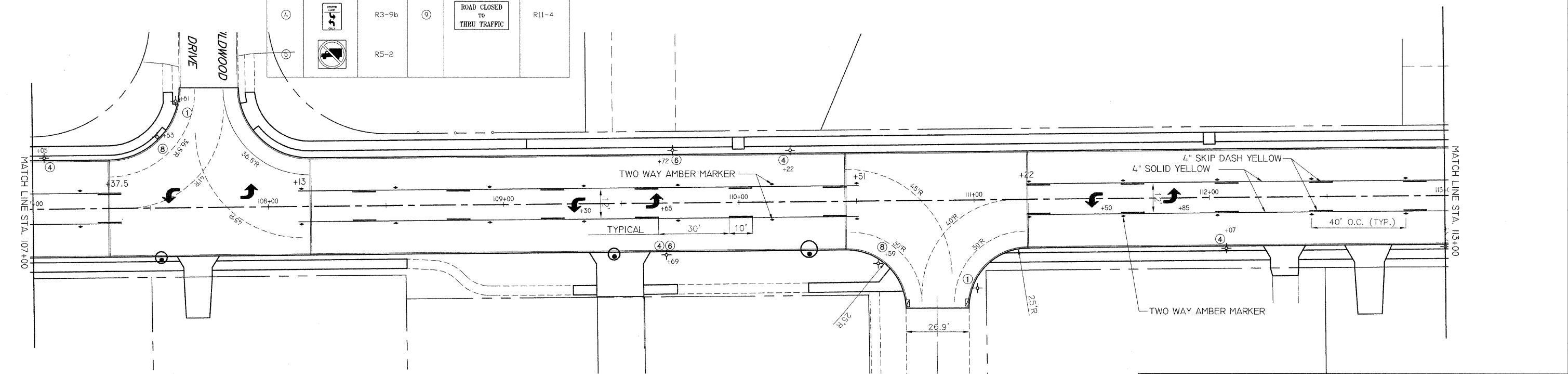
F.A.U. RTE.	SECTION	COUNTY	TOTAL SHEETS	SHEET NO.
5827	02-00221-00-RP	ROCK ISLAND		



35TH AVENUE



NO.	SIGN	MUTCD CODE	NO.	SIGN	MUTCD CODE
1		R1-1	6		R8-3a
2		R2-1	7		W14-1
3		R3-7	8		D-3
4		R3-9b	9		R11-4
5		R5-2			



CITY OF
MOLINE
ILLINOIS

DEPARTMENT OF PUBLIC WORKS / ENG. DIV. (309) 707-0700
3635 4TH AVENUE, MOLINE, IL 61265

7TH STREET RECONSTRUCTION & WIDENING
33RD AVE TO SOUTH OF WILDWOOD DRIVE
PAVEMENT MARKING

Designed MEF Sheet 15 of 34
Drawn MEF Project No. MFT221