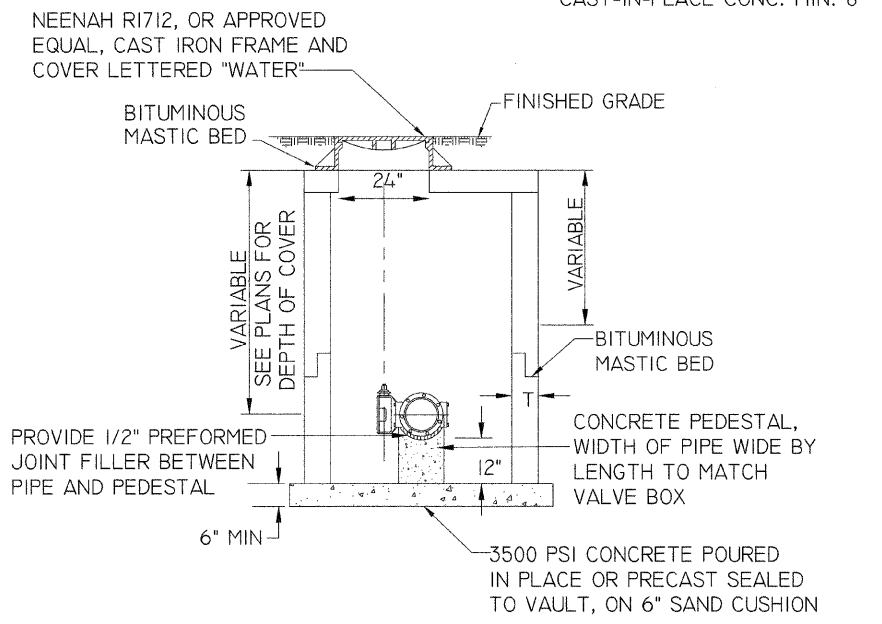
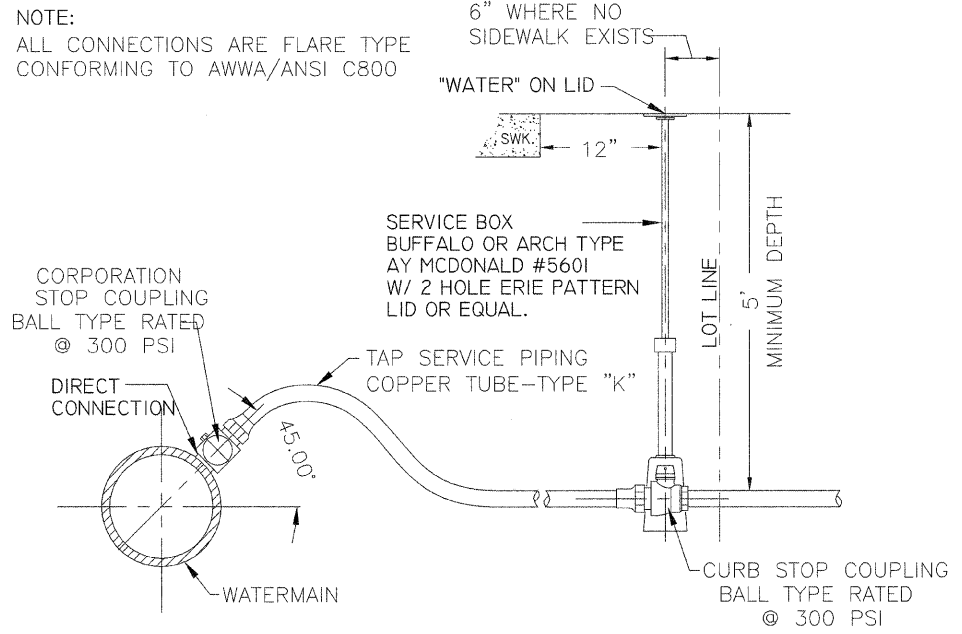


F.A.U. RTE	SECTION	COUNTY	TOTAL SHEETS	SHEET NO.
5827	02-00221-00-RP	ROCK ISLAND		



**NOTE:**  
FRAMES AND LIDS SHALL BE LOCATED OVER CENTER OF OPERATING NUT.

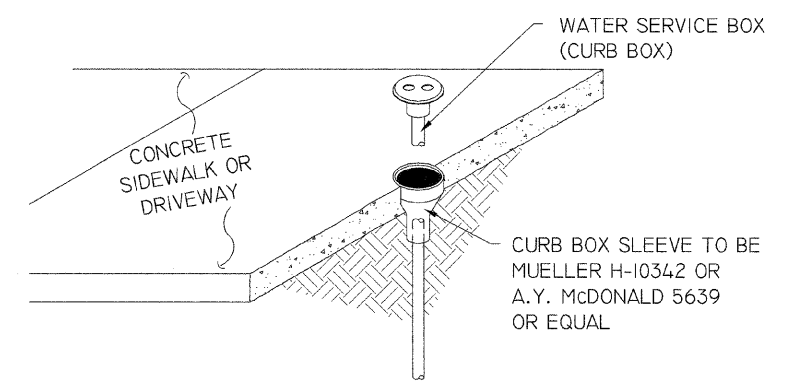
TYPICAL VALVE VAULT DETAIL		
DATE	CITY OF MOLINE STANDARD	#23
3/04		



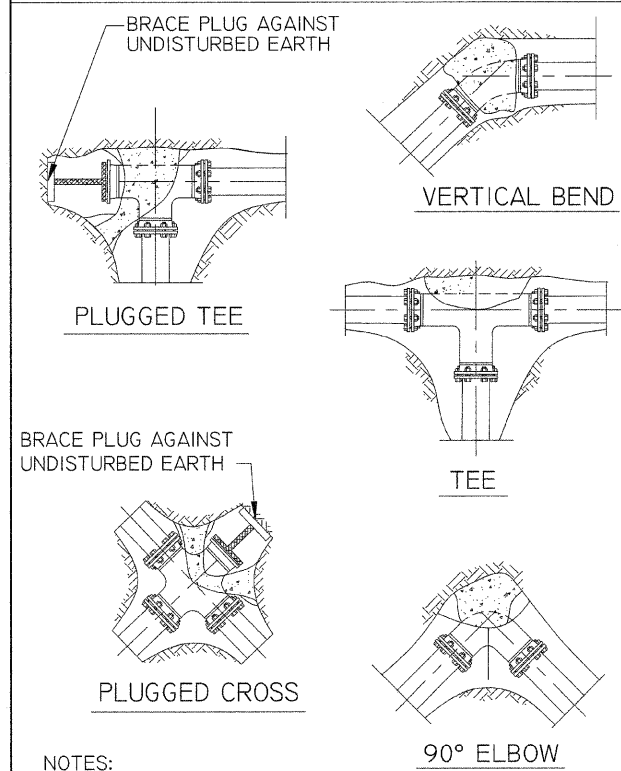
**NOTE:**  
ALL CONNECTIONS ARE FLARE TYPE CONFORMING TO AWWA/ANSI C800

Each water service pipe shall be connected to the water main through a brass corporation stop. The main shall be tapped at an angle of 45 degrees with the vertical, and the stop must be turned so that the T-handle will be on the top. Any damage, tears, cuts, etc. of the polyethylene wrap shall be repaired after tapping and prior to backfilling.

WATER SERVICE CONNECTION		
DATE	CITY OF MOLINE STANDARD	#24
12/05		

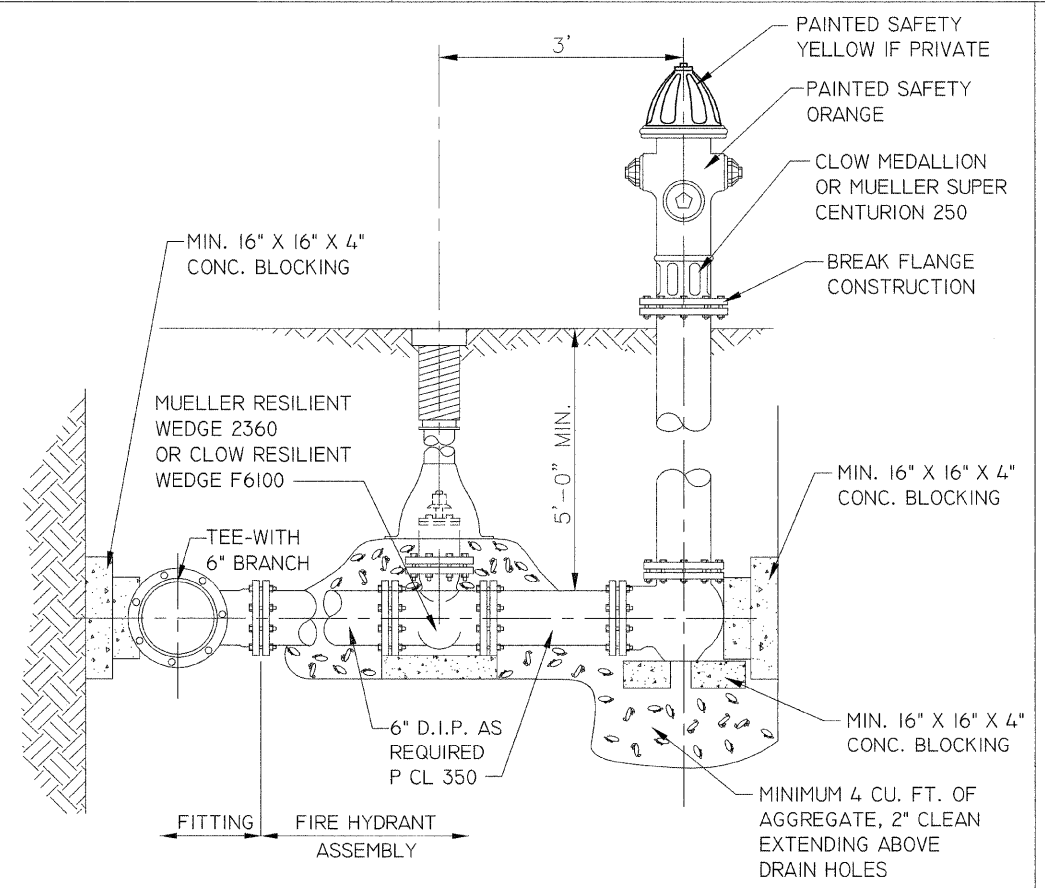


CURB BOX AND SLEEVE		
DATE	CITY OF MOLINE STANDARD	#25
10/95		



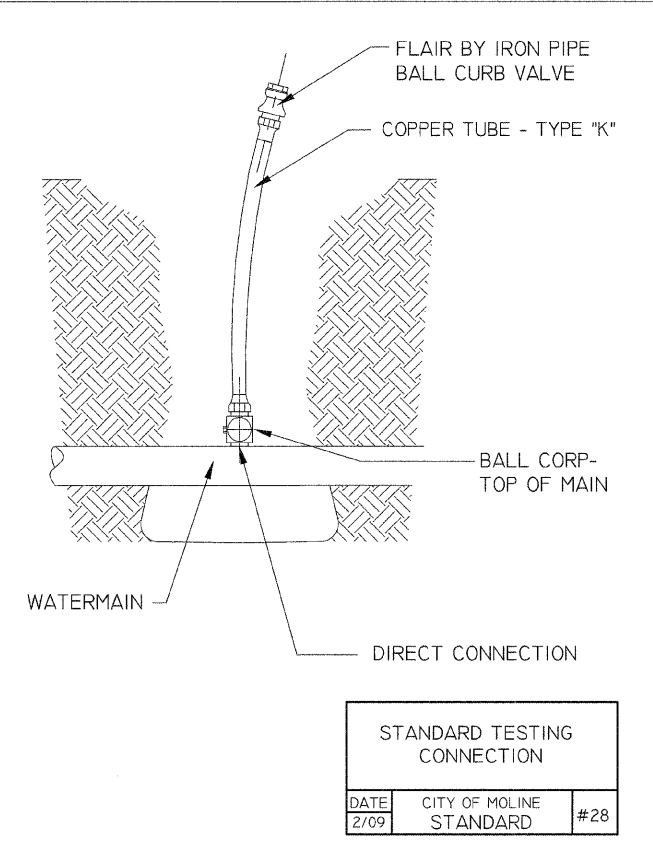
**NOTES:**  
ALL BLOCKS BEAR AGAINST UNDISTURBED EARTH.  
ARROWS INDICATE DIRECTION OF THRUST.  
ALL BLOCKS TO BE 3500 P.S.I. CONCRETE.  
ALL FITTINGS SHOWN IN PLAN EXCEPT VERTICAL BEND.

THRUST BLOCK INSTALLATIONS		
DATE	CITY OF MOLINE STANDARD	#26
2/96		

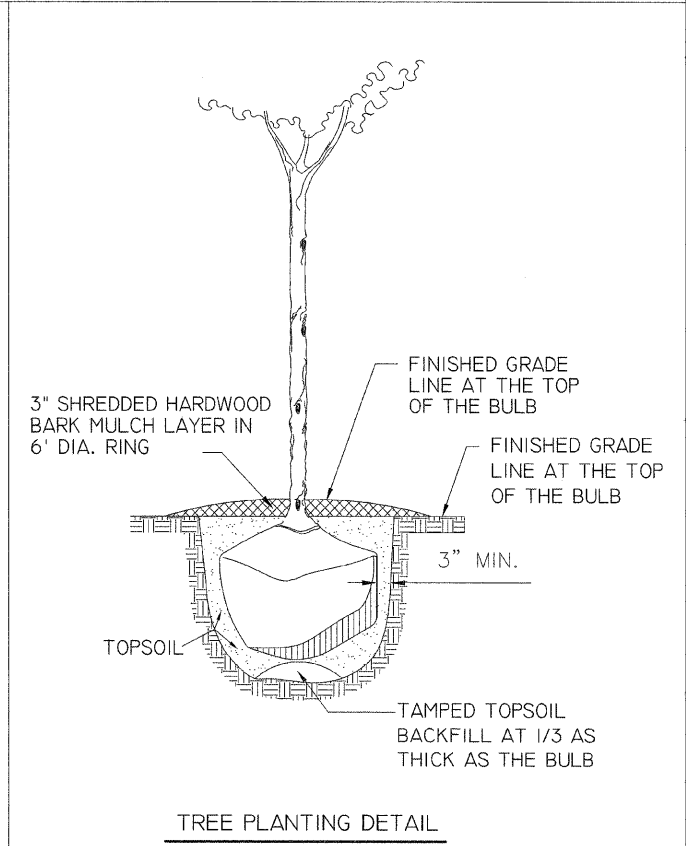


**NOTE:**  
HYDRANT CONNECTIONS SHALL BE MADE WITH MJ FIELD LOK JOINTS.

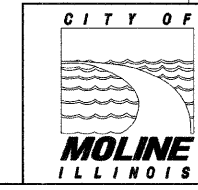
FIRE HYDRANT ASSEMBLY		
DATE	CITY OF MOLINE STANDARD	#27
12/05		



STANDARD TESTING CONNECTION		
DATE	CITY OF MOLINE STANDARD	#28
2/09		



TREE PLANTING DETAIL



DEPARTMENT OF PUBLIC WORKS / ENG. DIV. (309) 707-0700  
3635 4TH AVENUE, MOLINE, IL 61265  
7TH STREET RECONSTRUCTION & WIDENING  
33RD AVE TO SOUTH OF WILDWOOD DRIVE  
DETAILS

DESIGNED: MEF  
DRAWN: MEF

SHEET 24 OF 34  
PROJECT No. MFT221