

FAU RTE.	SECTION	COUNTY	TOTAL SHEETS	SHEET NO.
5031	04-00344-00-TL	WINNEBAGO	28	1
		ILLINOIS	CONTRACT NO. 85478	

28+1=29

STATE OF ILLINOIS
DEPARTMENT OF TRANSPORTATION

DIVISION OF HIGHWAYS
**PROPOSED
HIGHWAY PLANS**

FAU ROUTE 5031 (RALSTON ROAD)
SECTION 04-00344-00-TL
PROJECT ARA-5099(091)

WINNEBAGO COUNTY

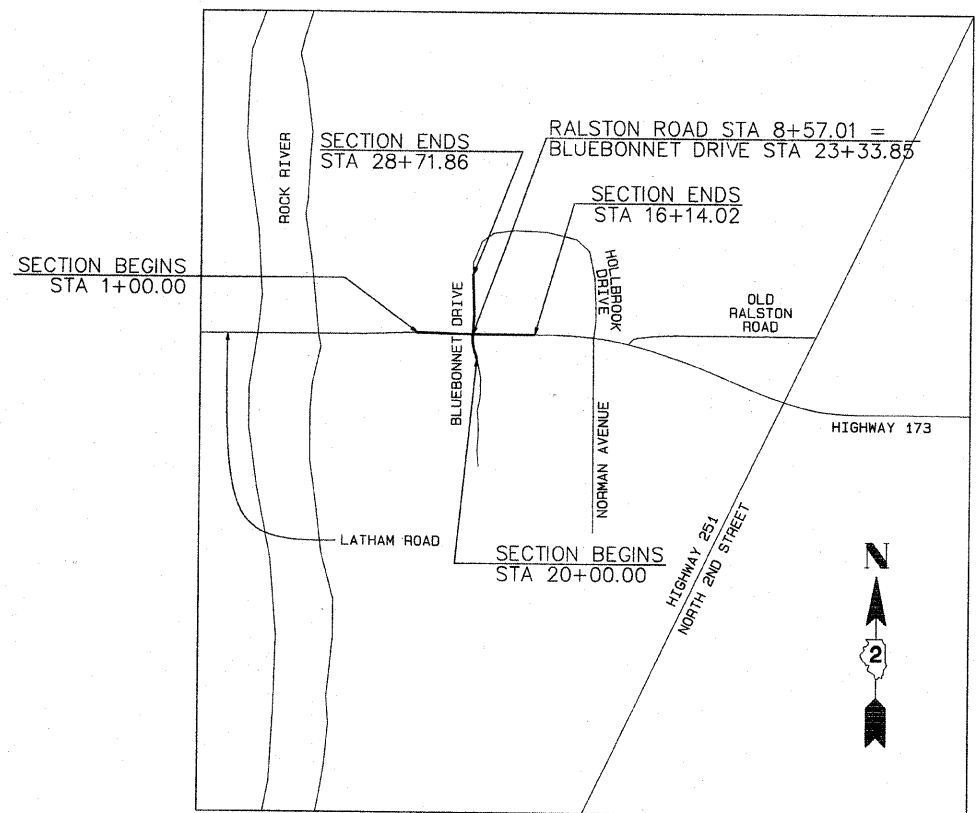
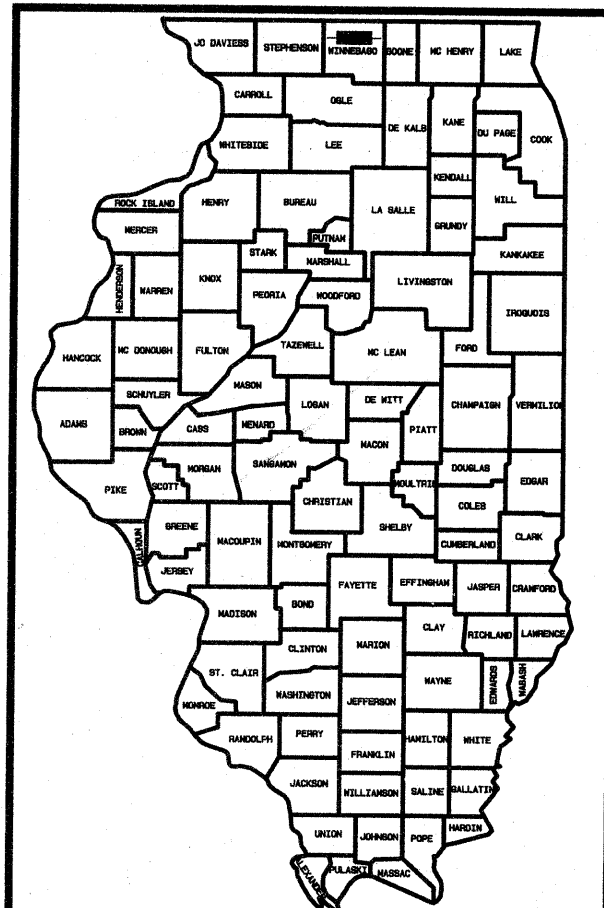
C-92-171-09

INDEX OF SHEETS

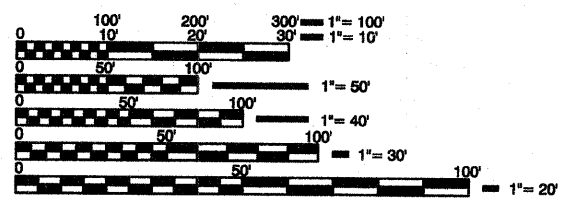
SHEET NO.	SHEET NAME
1	COVER SHEET, INDEX OF SHEETS
2	SUMMARY OF QUANTITIES & GENERAL NOTES
3	DETAILS & TYPICAL SECTIONS
4	SCHEDULE OF QUANTITIES
5-7	PLAN AND PROFILE RALSTON ROAD
8-9	PLAN AND PROFILE BLUEBONNET DRIVE
10-11	STRIPING PLAN RALSTON ROAD
12	STRIPING PLAN BLUEBONNET DRIVE
12A	STAGING PLAN
13	EROSION CONTROL PLAN
14-15	TRAFFIC SIGNAL DESIGN
16	ROCK RIVER WATER RECLAMATION DISTRICT DETAILS
17-23	CROSS SECTIONS RALSTON ROAD
24-28	CROSS SECTIONS BLUEBONNET DRIVE

STANDARDS

280001-05	TEMPORARY EROSION CONTROL SYSTEMS
406201-01	MAILBOX TURNOUT
424001-05	CURB RAMPS FOR SIDEWALKS
542301-02	PRECAST REINFORCED CONCRETE FLARED END SECTION
602301-02	INLET - TYPE A
604036-02	GRATE TYPE B
606001-04	CONCRETE CURB TYPE B AND COMBINATION CONCRETE CURB AND GUTTER
701006-03	OFF-RD OPERATIONS, 2L, 2W, 15' (4.5m) TO 24' (800mm) FROM PAVEMENT EDGE
701011-02	OFF-RD MOVING OPERATIONS, 2L, 2W DAY ONLY
701301-03	LANE CLOSURE, 2L, 2W, SHORT TIME OPERATIONS
701311-03	LANE CLOSURE, 2L, 2W, MOVING OPERATIONS-DAY ONLY
701326-03	LANE CLOSURE, 2L, 2W, PAVEMENT WIDENING, FOR SPEEDS > OR = 45 MPH
701331-03	LANE CLOSURE, 2L, 2W, WITH RUN-AROUND FOR SPEEDS > OR = 45 MPH
701501-05	URBAN LANE CLOSURE, 2L, 2W, UNDIVIDED
701502-03	URBAN LANE CLOSURE, 2L, 2W, WITH BIDIRECTIONAL LEFT TURN LANE
701701-06	URBAN LANE CLOSURE, MULTILANE INTERSECTION
701801-04	LANE CLOSURE MULTILANE 1W OR 2W CROSSWALK OR SIDEWALK CLOSURE
701901-01	TRAFFIC CONTROL DEVICES
720001-01	SIGN PANEL MOUNTING DETAILS
720006-02	SIGN PANEL ERECTION DETAILS
720011-01	METAL POSTS FOR SIGNS, MARKERS & DELINEATORS
720016-02	MAST ARM MOUNTED STREET NAME SIGNS
720021-02	SIGN PANELS, EXTRUDED ALUMINUM TYPE
728001-01	TELESCOPING STEEL SIGN SUPPORT
729001-01	APPLICATIONS OF TYPES A & B METAL POSTS (FOR SIGNS & MARKERS)
760001-02	TYPICAL PAVMENT MARKINGS
761001-03	TYPICAL APPLICATIONS RAISED REFLECTIVE PAVEMENT MARKERS
805001-01	ELECTRICAL SERVICE INSTALLATION DETAILS
814001-02	HANDHOLES
814006-02	DOUBLE HANDHOLES
857001-01	STANDARD PHASE DESIGNATIONS DIAGRAMS AND PHASE SEQUENCES
862001-01	UNINTERRUPTABLE POWER SUPPLY (UPS)
873001-02	TRAFFIC SIGNAL GROUNDING & BONDING
877001-04	STEEL MAST ARM ASSEMBLY AND POLE 16' THROUGH 55'
877011-04	STEEL COMBINATION MAST ARM ASSEMBLY AND POLE 16' THROUGH 55'
878001-06	CONCRETE FOUNDATION DETAILS
880006-01	TRAFFIC SIGNAL MOUNTING DETAILS
BLR 21-8	TYPICAL APPLICATION OF TRAFFIC CONTROL DEVICES
BLR 24-2	FOR CONSTRUCTION ON RURAL LOCAL HIGHWAYS
	MAILBOX TURNOUT FOR LOCAL ROADS



LOCATION MAP



FULL SIZE PLANS HAVE BEEN PREPARED USING STANDARD ENGINEERING SCALES. REDUCED SIZED PLANS WILL NOT CONFORM TO STANDARD SCALES. IN MAKING MEASUREMENTS ON REDUCED PLANS, THE ABOVE SCALES MAY BE USED.

J.U.L.I.E.
JOINT UTILITY LOCATION INFORMATION FOR EXCAVATION
1-800-892-0123
OR 811

PROJECT ENGINEER: ARNOLD LUNDGREN ASSOCIATES
PROJECT MANAGER: WINNEBAGO COUNTY HIGHWAY DEPARTMENT

CONTRACT NO. 85478

GROSS LENGTH = 2,385.88 FT. = 0.452 MILE
NET LENGTH = 2,385.88 FT. = 0.452 MILE
SECTION 18 TOWNSHIP 45N RANGE 2E
SECTION 19 TOWNSHIP 45N RANGE 2E

Arnold Lundgren & Associates
Professional Engineers and Land Surveyors
Illinois Design Firm No. 184-002889
803 N. Church Street • Rockford, IL 61103
(815) 962-9881 • Fax (815) 962-9409
www.arnoldlundgren.com

DATE: 05/17/06
BY: VRL
APPROVED: RFA
ORDER NO.: 22475

REVISIONS:
3-14-09 REVISED PER WINNEBAGO COUNTY HIGHWAY DEPT. COMMENTS VRL
3-20-09 REVISED PER DRAWING COMMENTS VRL
4-20-09 REVISED PER WINNEBAGO COUNTY HIGHWAY DEPT. COMMENTS VRL
9-17-09 REVISED PER BIDDING COMMENTS VRL
10-15-09 REVISED PER DOT COMMENTS VRL
11-20-09 REVISED PER DOT COMMENTS VRL

Professional Engineer
062-042258
REGISTERED PROFESSIONAL ENGINEER OF ILLINOIS
James W. Kroepflin
Date Signed 11/19/09
License Expires 11/20/11

WINNEBAGO COUNTY HIGHWAY DEPARTMENT

Approved: *November 19, 2009*
Winnebago County Highway Department, County Engineer

Passed: 11/23 20 09
Jason T. Nelson, etc.
District 2 Engineer of Local Roads & Streets

Releasing for Bid Based on Limited Review: 11/23 20 09
Deputy Director of Highways, Region 2 Engineer

PRINTED BY THE AUTHORITY
OF THE STATE OF ILLINOIS