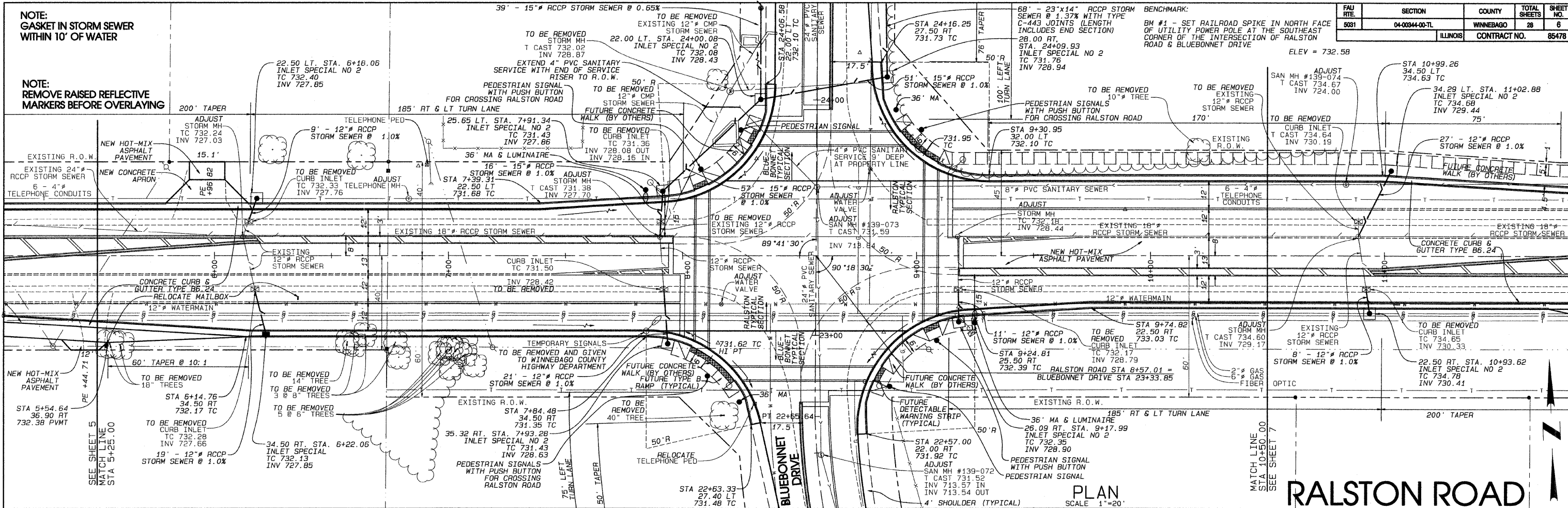


NOTE:
GASKET IN STORM SEWER
WITHIN 10' OF WATER

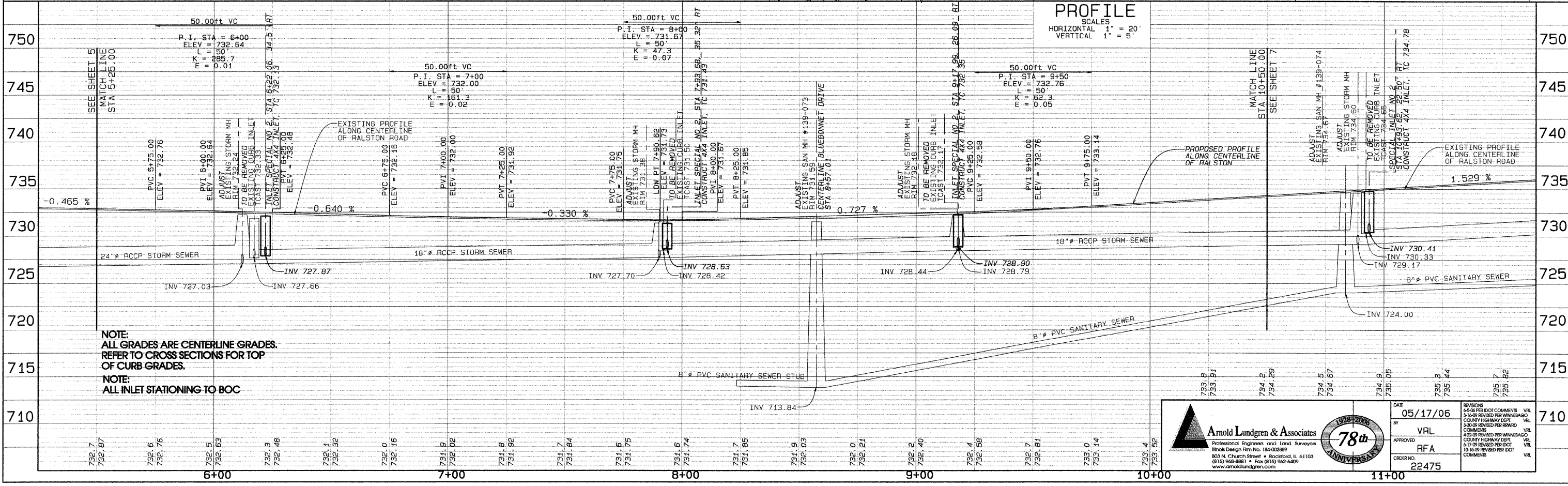
NOTE:
REMOVE RAISED REFLECTIVE
MARKERS BEFORE OVERLAYING

FAU RTE	SECTION	COUNTY	TOTAL SHEETS	SHEET NO.
5081	04-00344-00-TL	WINNEBAGO	28	6
ILLINOIS			CONTRACT NO.	85478



PLAN
SCALE 1"=20'

RALSTON ROAD



PROFILE
SCALE
HORIZONTAL 1"=20'
VERTICAL 1"=5'

NOTE:
ALL GRADES ARE CENTERLINE GRADES.
REFER TO CROSS SECTIONS FOR TOP
OF CURB GRADES.

NOTE:
ALL INLET STATIONING TO BOC

Arnold Lundgren & Associates
Professional Engineers and Land Surveyors
Illinois Design Firm No. 184-002889
803 N. Church Street • Rockford, IL 61103
(815) 968-8881 • Fax (815) 962-8469
www.arnoldlundgren.com

DATE: 05/17/06
BY: VRL
APPROVED: RFA
ORDER NO.: 22475

REVISIONS

NO.	DATE	DESCRIPTION
1	05/17/06	ISSUED FOR PERMITS
2	06/01/06	REVISED PER WINNEBAGO COUNTY HIGHWAY DEPT. COMMENTS
3	06/01/06	REVISED PER ROAD COMMISSION COMMENTS
4	06/01/06	REVISED PER WINNEBAGO COUNTY HIGHWAY DEPT. COMMENTS
5	06/01/06	REVISED PER DOT COMMENTS