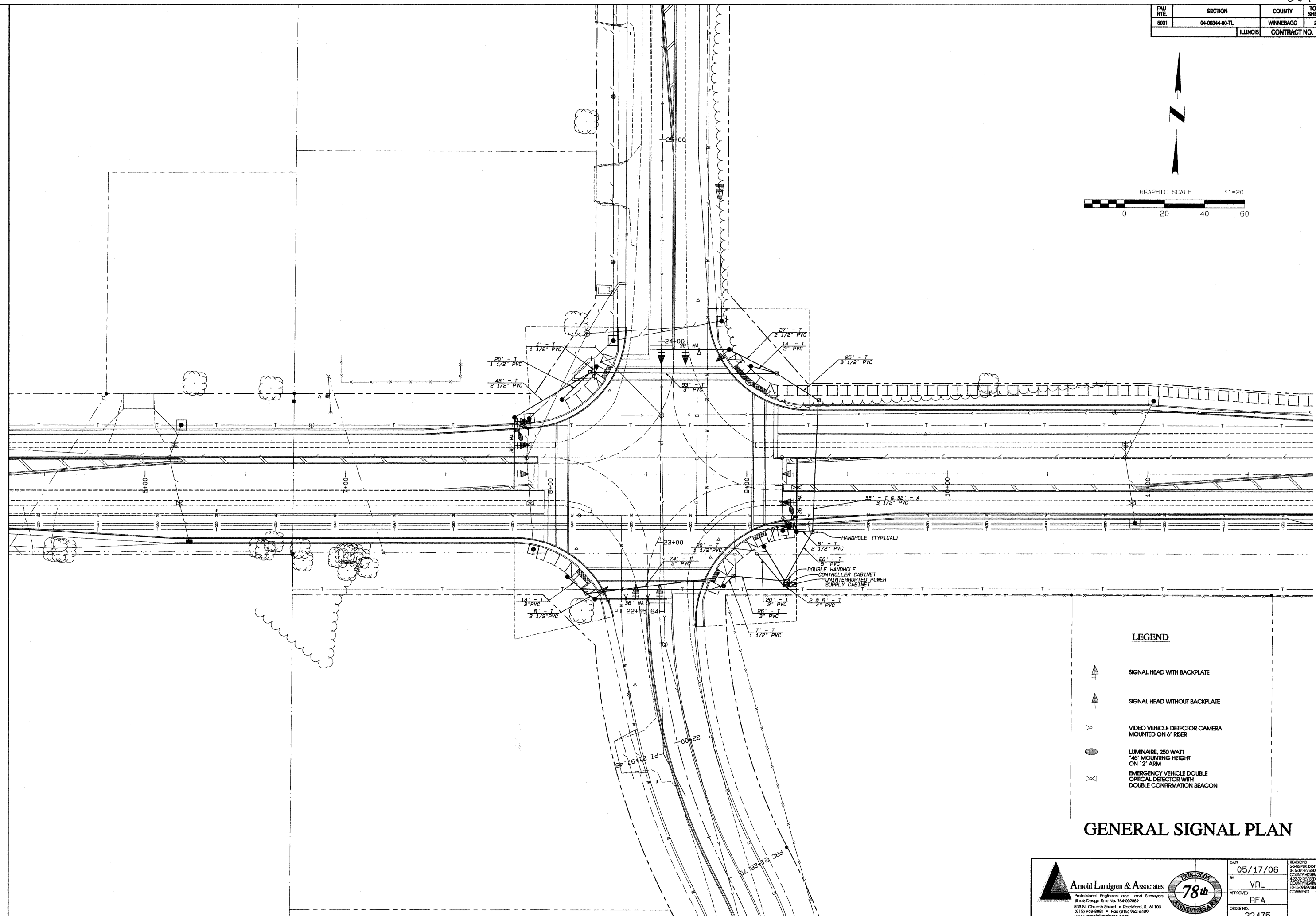
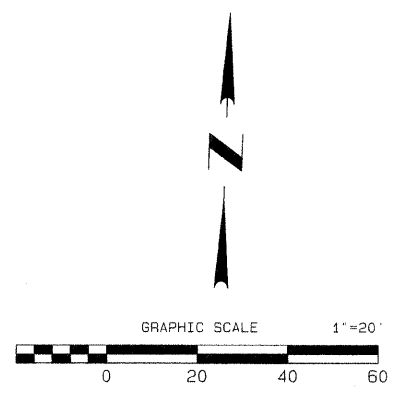








FAU RTE	SECTION	COUNTY	TOTAL SHEETS	SHEET NO.
5031	04-0344-00-TL	WINNEBAGO	28	14
ILLINOIS			CONTRACT NO.	85478



**LEGEND**

-  SIGNAL HEAD WITH BACKPLATE
-  SIGNAL HEAD WITHOUT BACKPLATE
-  VIDEO VEHICLE DETECTOR CAMERA MOUNTED ON 6' RISER
-  LUMINAIRE, 250 WATT 45' MOUNTING HEIGHT ON 12' ARM
-  EMERGENCY VEHICLE DOUBLE OPTICAL DETECTOR WITH DOUBLE CONFIRMATION BEACON

**GENERAL SIGNAL PLAN**

 <p><b>Arnold Lundgren &amp; Associates</b> Professional Engineers and Land Surveyors Inkole Design Firm No. 184-02889 600 N. Church Street • Rockford, IL 61103 (815) 958-8881 • Fax: (815) 958-8609 www.arnoldlundgren.com</p>	DATE	05/17/06	REVISIONS
	BY	VRL	3-5-06 PER DOT COMMENTS VRL
	APPROVED	RFA	3-16-06 REVISED PER WINNEBAGO COUNTY HIGHWAY DEPT. VRL
	ORDER NO.	22475	4-22-06 REVISED PER WINNEBAGO COUNTY HIGHWAY DEPT. VRL